

# HORNBY ELECTRICALLY LIGHTED ACCESSORIES

## INSTRUCTIONS

The method of connecting up a Hornby Accessory to the  $3\frac{1}{2}$ -volt lighting circuit of a Meccano T20A or T6A Transformer is shown in the accompanying diagram. It is specially important to note that the lighting circuit is provided by the third pair of sockets; the other pairs of sockets must not on any account be used.

With the Transformer are packed two Plugs, an Earthing Clip, a coil of Wire, and a Fuse Unit. A piece of Wire is cut from the coil, of a sufficient length to reach from the Transformer to the track. One end of this Wire is attached to the Earthing Clip, which is then clipped to one of the sleepers of the track, as shown in the diagram. The other end of the Wire is inserted in one of the Plugs and secured by the set screw. The Fuse Unit is now plugged into the lower socket of the third pair, and the plug end of the Wire is inserted in the Fuse Unit.

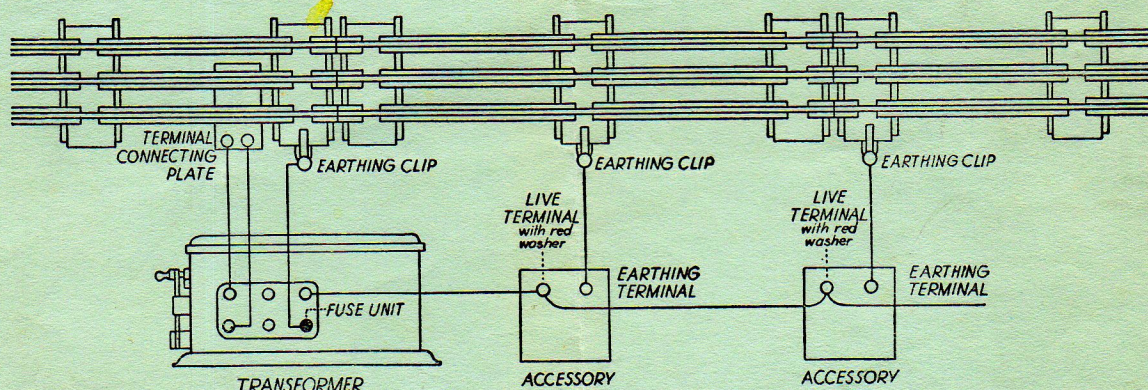
A second piece of Wire is now cut, of a sufficient length to reach from the Transformer to the Accessory. One end of this Wire is inserted in the remaining Plug, and this is plugged into the upper socket of the third pair of the Transformer. The other end of this Wire is taken to the terminal of the Accessory that has a red washer, and is screwed up tightly. With the Accessory is packed an Earthing Clip, and the final step is to cut a third piece of Wire to connect the other terminal of the Accessory to a sleeper of the track by means of this Clip. If the connections have been made correctly, the lamp of the Accessory will now light up. The lamp (which is not included with the Accessory) should be an ordinary  $3\frac{1}{2}$ -volt flashlamp bulb.

If one Accessory is to be connected up to another that is already wired to the Transformer, all that is required is to connect the red washer terminals of the two Accessories by a piece of Wire, and to connect the other terminal of the second Accessory to a sleeper of the track by means of the Earthing Clip. Other Accessories can be connected up in a similar manner up to the limit of fourteen  $3\frac{1}{2}$ -volt lamps for the T20A Transformer and eighteen for the T6A type Transformer.

If it is desired to light the Accessory from an accumulator, one terminal of the accumulator is fixed to the track by means of an Earthing Clip, and the other is connected to the red washer terminal of the Accessory, the remaining terminal of the Accessory being connected to the track by an Earthing Clip. The method of connection is the same whether the Accessory is used with a 6-volt electric railway run from an accumulator, or with a clockwork railway and an accumulator used only to light the Accessory.

### SPECIAL NOTE.

Certain electrically-lighted Accessories—the Engine Sheds, the Level Crossings, and the Buffer Stops—are fitted with a short section of rail, and so are earthed when connected to the track. An Earthing Clip is therefore not required, and these Accessories have one terminal only. To light them, this must be connected to the Transformer or accumulator as described for the red washer terminal of the ordinary type of Accessory, or to the red washer terminal of another Accessory that is already connected for lighting.



MECCANO LIMITED

- BINNS ROAD

- LIVERPOOL 13