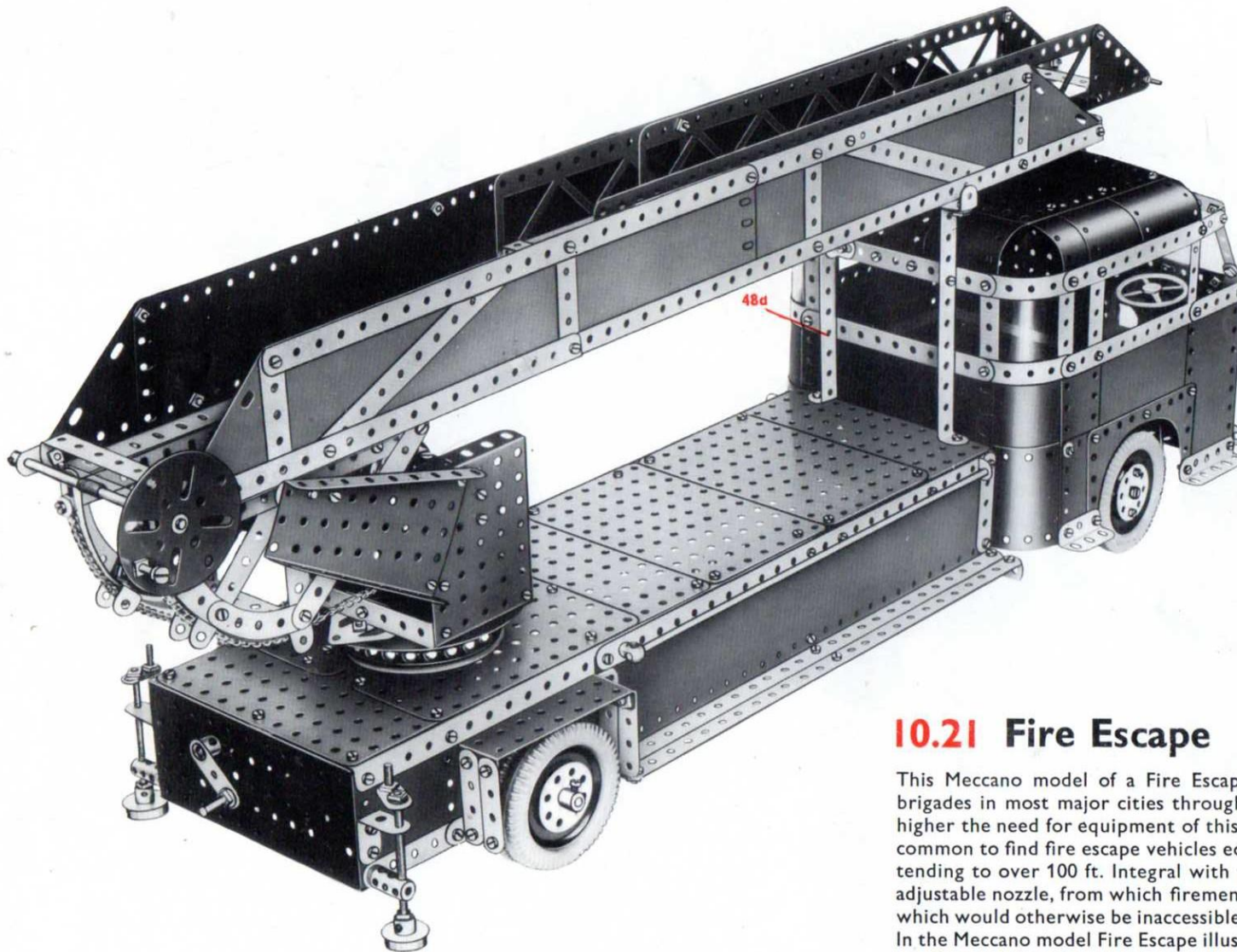


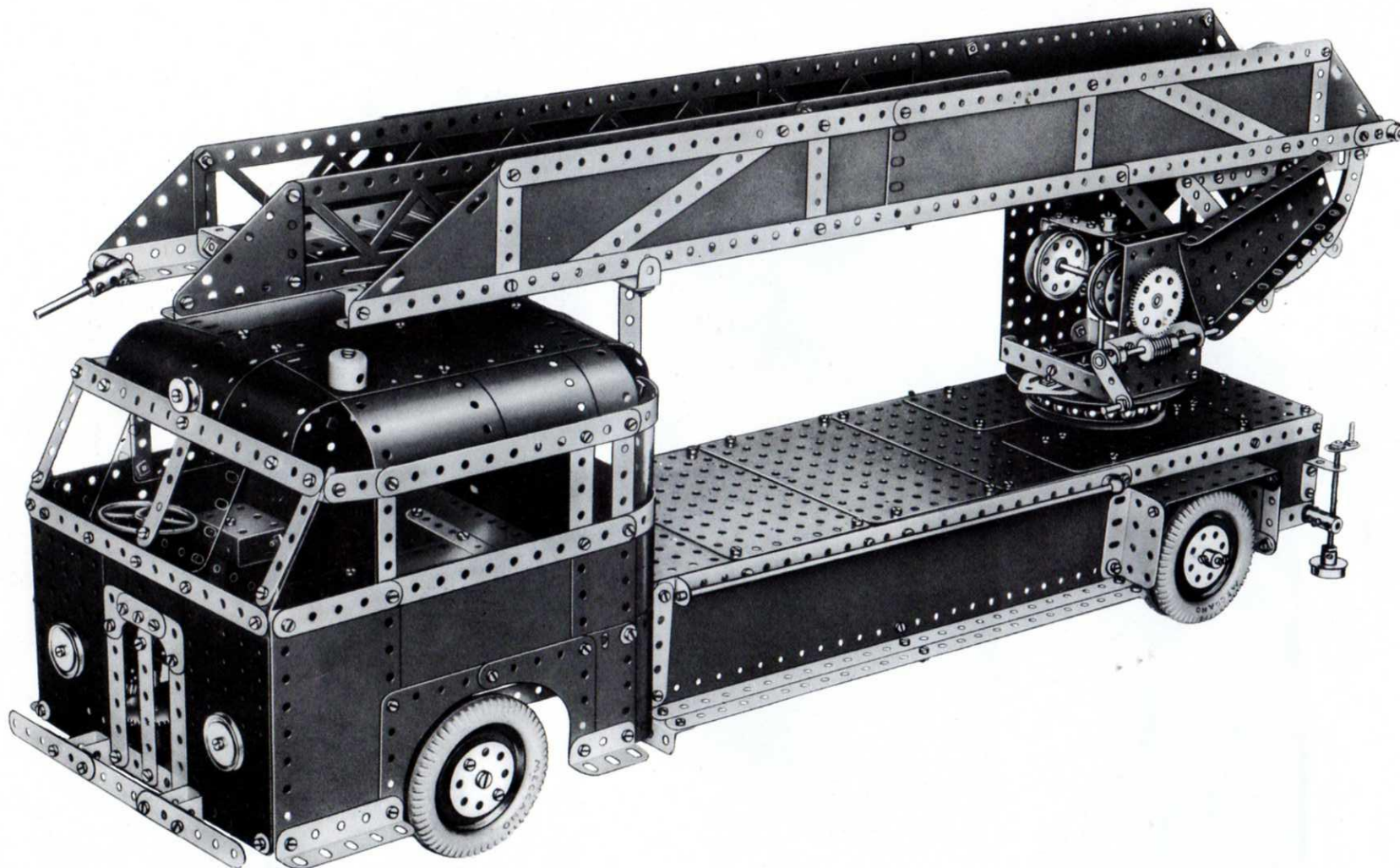
**MECCANO***Special Model Leaflet*9P  
Leaflet No. 21**10.21 Fire Escape**

This Meccano model of a Fire Escape is typical of those used by fire brigades in most major cities throughout the world. As buildings grow higher the need for equipment of this kind becomes imperative, and it is common to find fire escape vehicles equipped with escapes capable of extending to over 100 ft. Integral with the extending ladder is a hose and adjustable nozzle, from which firemen can direct jets of water into places which would otherwise be inaccessible.

In the Meccano model Fire Escape illustrated here, the ladder extends to a working height of over 3 ft. It is mounted on a ball-bearing turntable which can be swivelled by means of crank-operated worm drive through 360 degrees. The elevation of the escape is similarly crank-operated and the ladder is extended and retracted by means of a pulley system. Steadying jacks are provided at the rear of the chassis to give stability when the escape is in operation.

In the model the spacious cab, which in an actual vehicle houses both the driver and crew, is glazed at both front and sides.





### How to use this leaflet

The constructional details of the model shown in this Leaflet are explained entirely by means of half-tone illustrations and line drawings. Once the 'knack' of reading the drawings has been acquired assembly of the model will be found quite straightforward and simple to carry out.

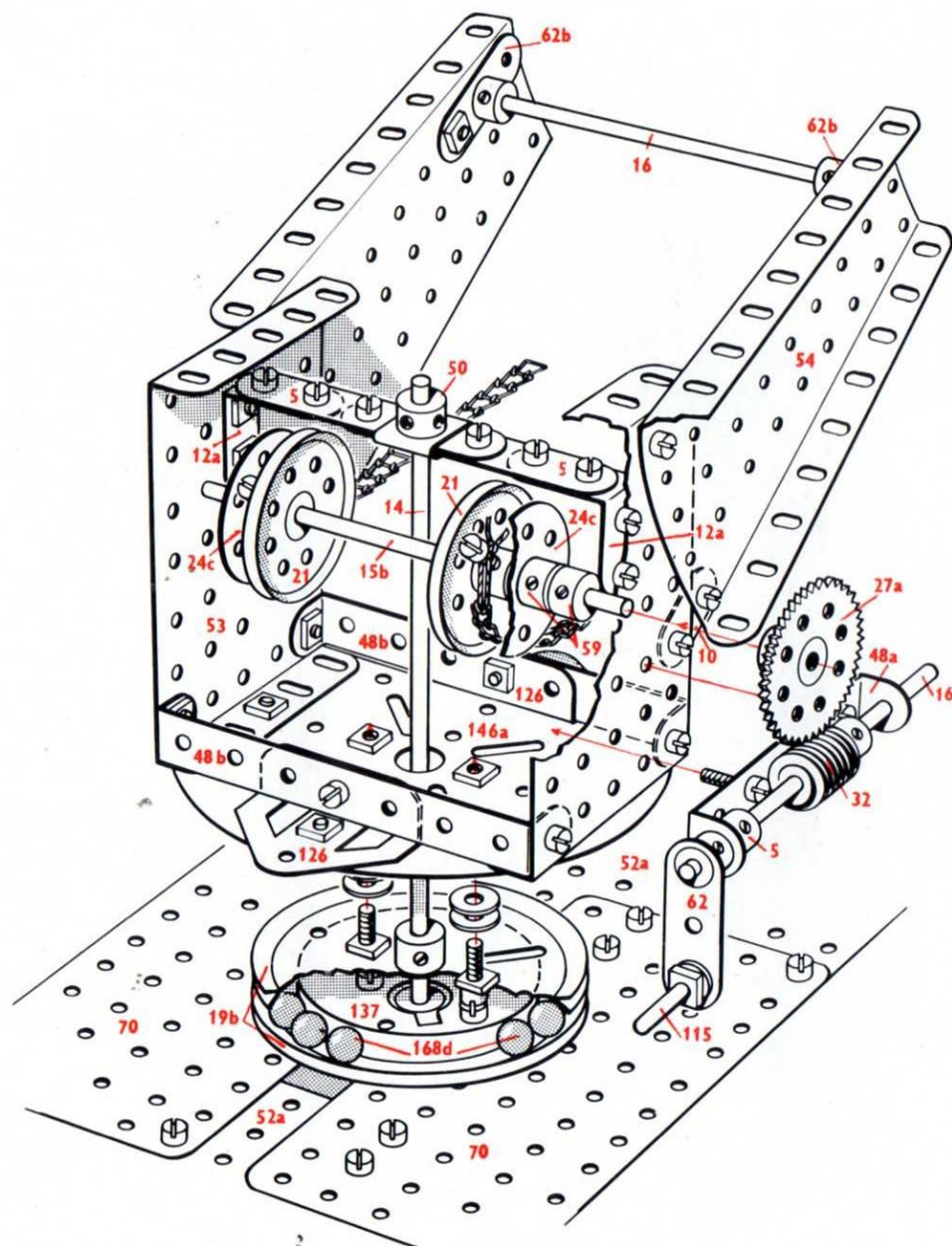
Before starting to build the model it is advisable to study all the illustrations carefully so as to get a good idea of its various sections. Points at which various units of the model are bolted together to form the complete structure are indicated in the drawings by RED DOTS or RED BOLTHEADS whenever possible.

The particular parts used in the assembly of the model can in most cases

be identified simply by looking at the illustrations, but where the identity of a part may not be quite clear, its Part Number is printed on the model illustrations in RED. RED DOTTED pointer lines are used to indicate parts that are hidden behind other parts of the structure.

As a further help a list of the parts required to build the model is given in this Leaflet. In this list the catalogue numbers of the parts are printed in RED and the quantity of each part in BLACK.

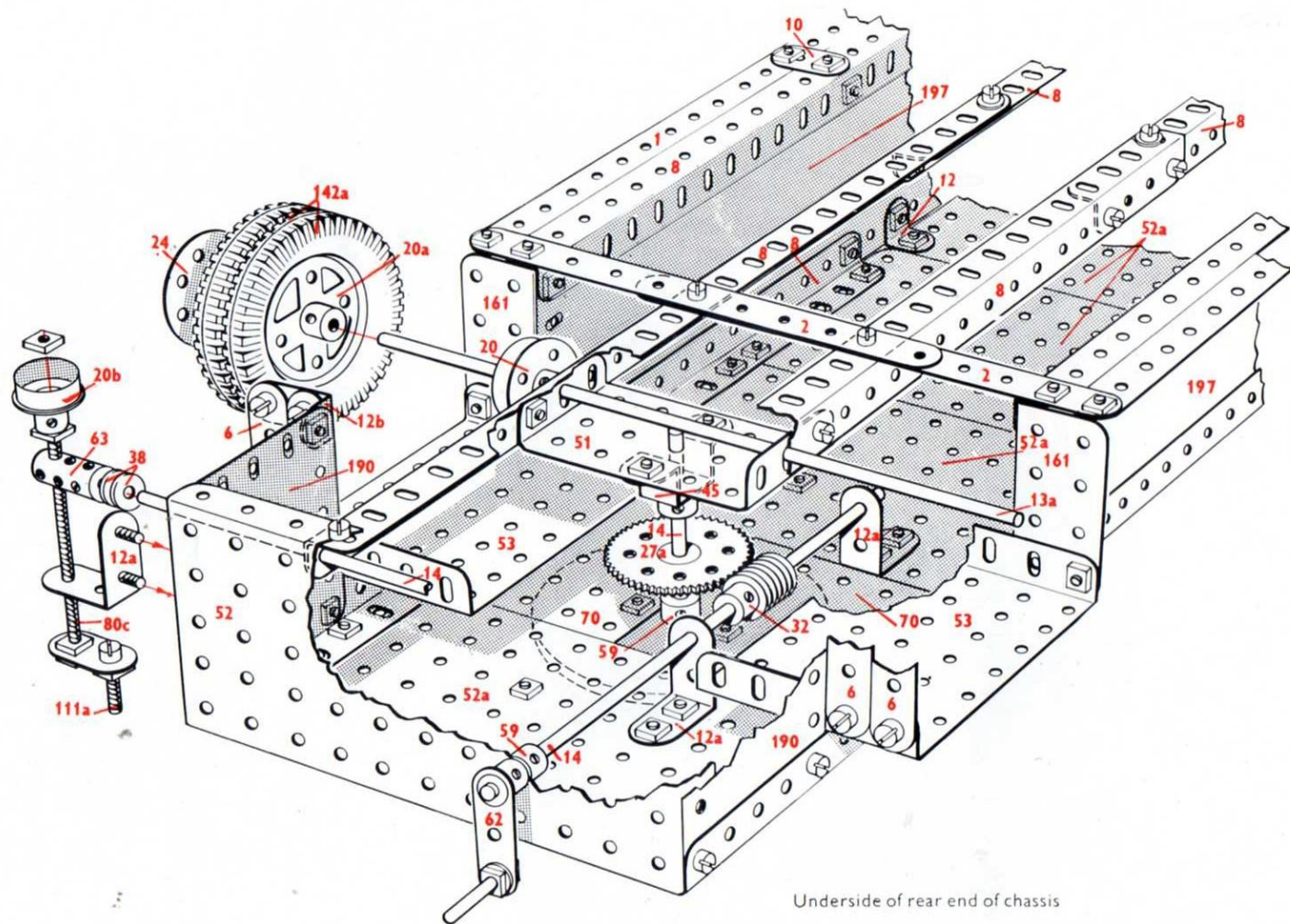
In models fitted with a driving Motor the particular type of Motor is indicated by one of the following Code Marks: M1 = Magic Clockwork Motor; M2 = No. 1 Clockwork Motor; M3 = Meccano Electric Motor.

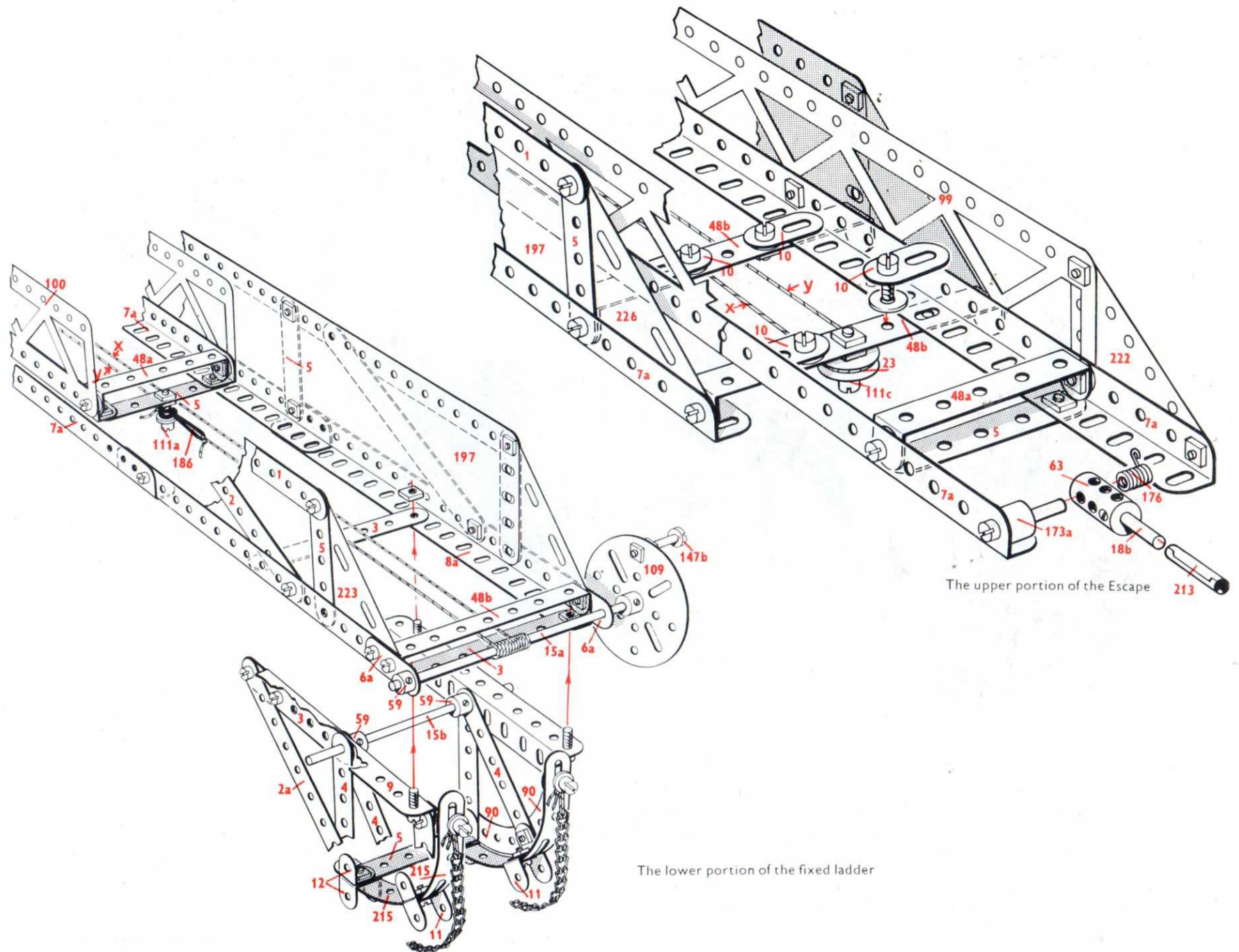


The Escape turntable mounting and elevating control

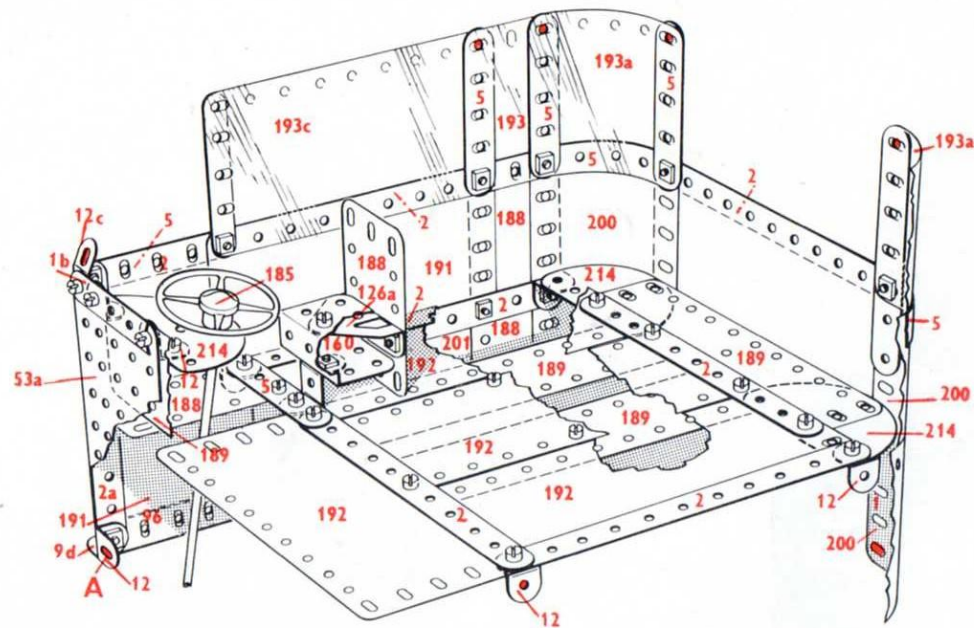
8 - 1	2 - 24a	2 - 124
2 - 1b	2 - 24c	1 - 125
23 - 2	1 - 25	4 - 126
4 - 2a	1 - 27	2 - 133a
6 - 3	2 - 27a	2 - 136
8 - 4	2 - 32	1 - 137
26 - 5	334 - 37a	6 - 142a
4 - 6	295 - 37b	1 - 146a
5 - 6a	23 - 38	3 - 147b
8 - 8	2 - 38d	1 - 160
2 - 8a	1 - 40	2 - 161
2 - 8b	3 - 45	1 - 164
4 - 9	2 - 48a	2 - 165
2 - 9d	6 - 48b	1 - 166
2 - 9f	1 - 48c	21 - 168d
10 - 10	2 - 48d	1 - 173a
4 - 11	1 - 50	1 - 176
24 - 12	1 - 51	1 - 185
6 - 12a	2 - 52	2 - 186
2 - 12b	4 - 52a	6 - 188
4 - 12c	4 - 53	4 - 189
2 - 13	2 - 53a	8 - 190
1 - 13a	2 - 54	4 - 191
3 - 14	10 - 59	5 - 192
1 - 15	2 - 62	2 - 193
2 - 15a	2 - 62b	2 - 193a
2 - 15b	6 - 63	2 - 193c
2 - 16	2 - 70	2 - 193e
3 - 17	2 - 80c	6 - 197
1 - 18a	4 - 90	6 - 200
1 - 18b	1 - 94	4 - 201
2 - 19b	2 - 99	2 - 212
2 - 20	2 - 100	3 - 214
6 - 20a	1 - 109	4 - 215
2 - 20b	1 - 111	2 - 222
2 - 21	5 - 111a	2 - 223
2 - 22a	11 - 111c	2 - 226
2 - 23	1 - 115	5 - 235
2 - 24	2 - 115a	2 - 235a



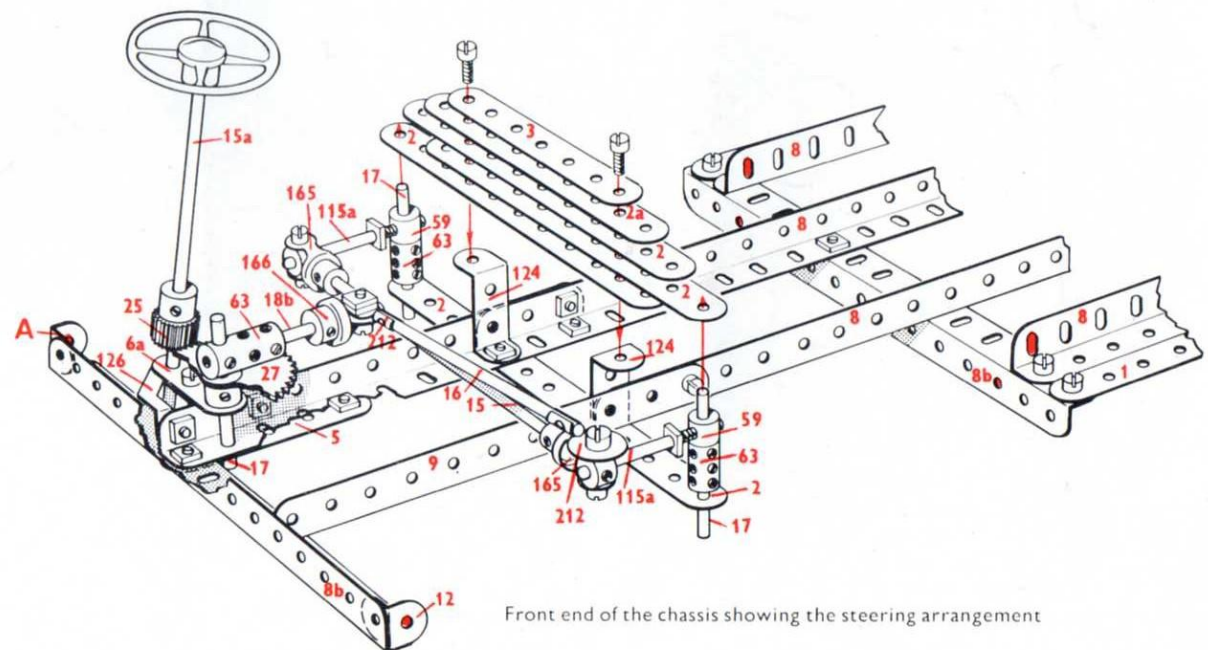






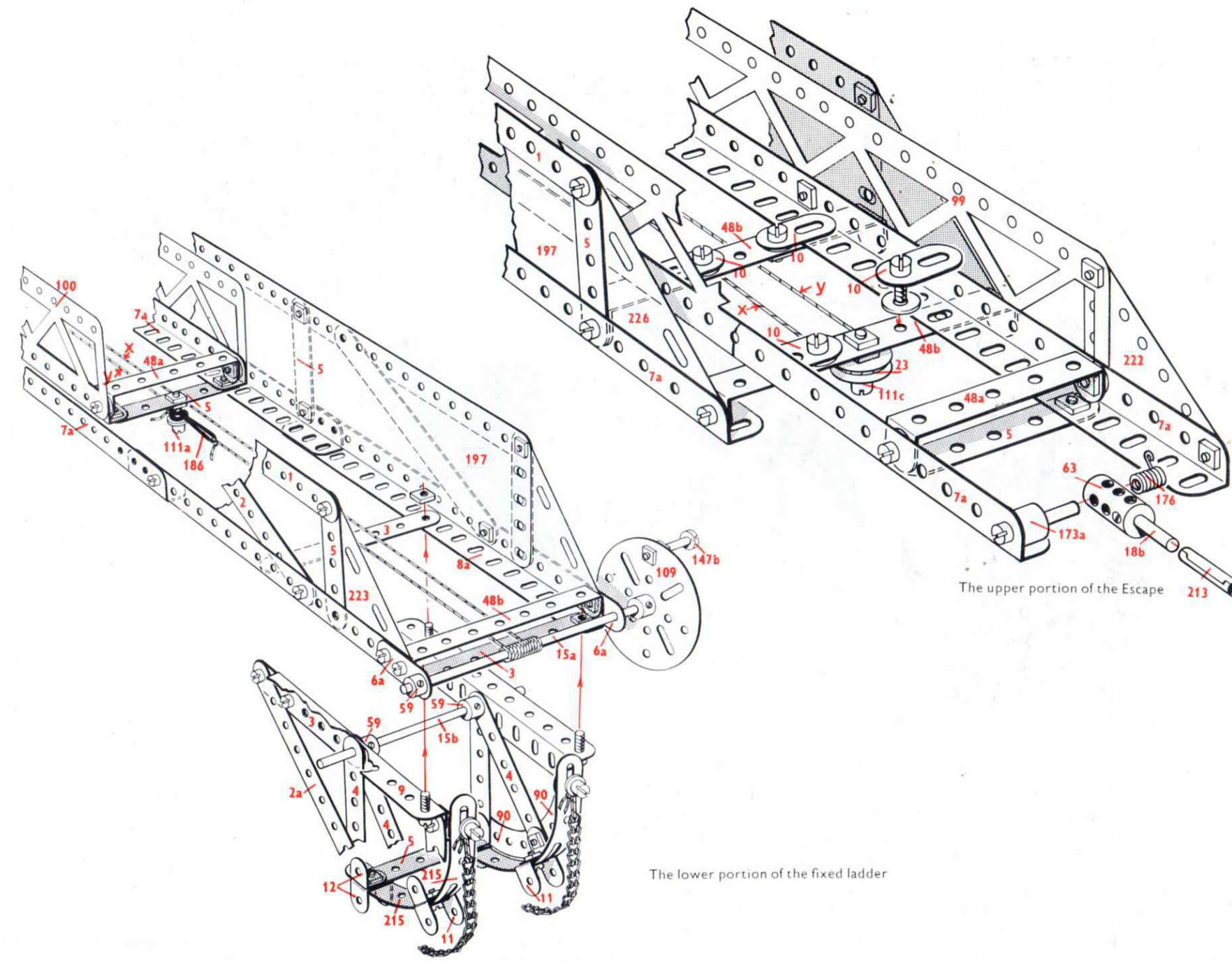


Interior construction of the cab



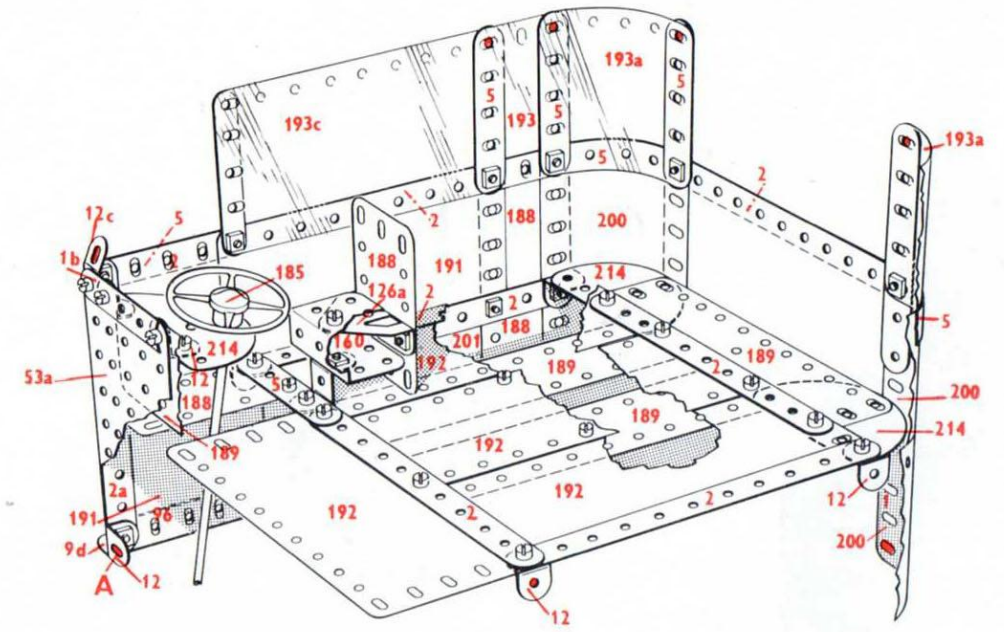
Front end of the chassis showing the steering arrangement



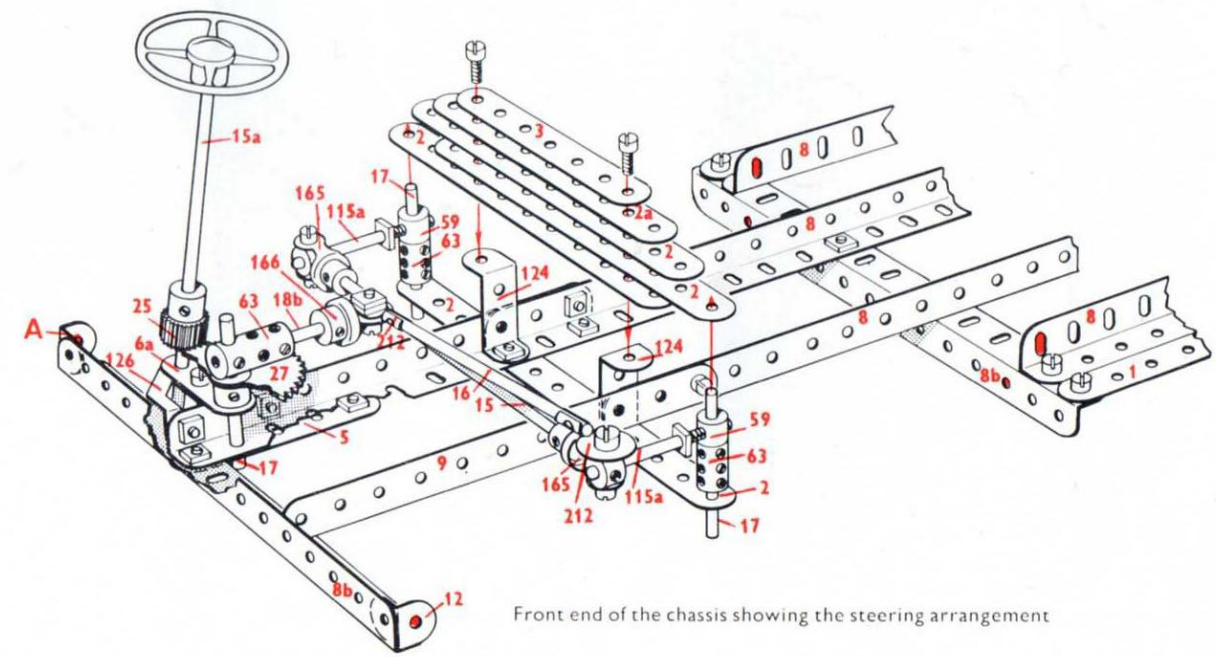


The upper portion of the Escape

The lower portion of the fixed ladder



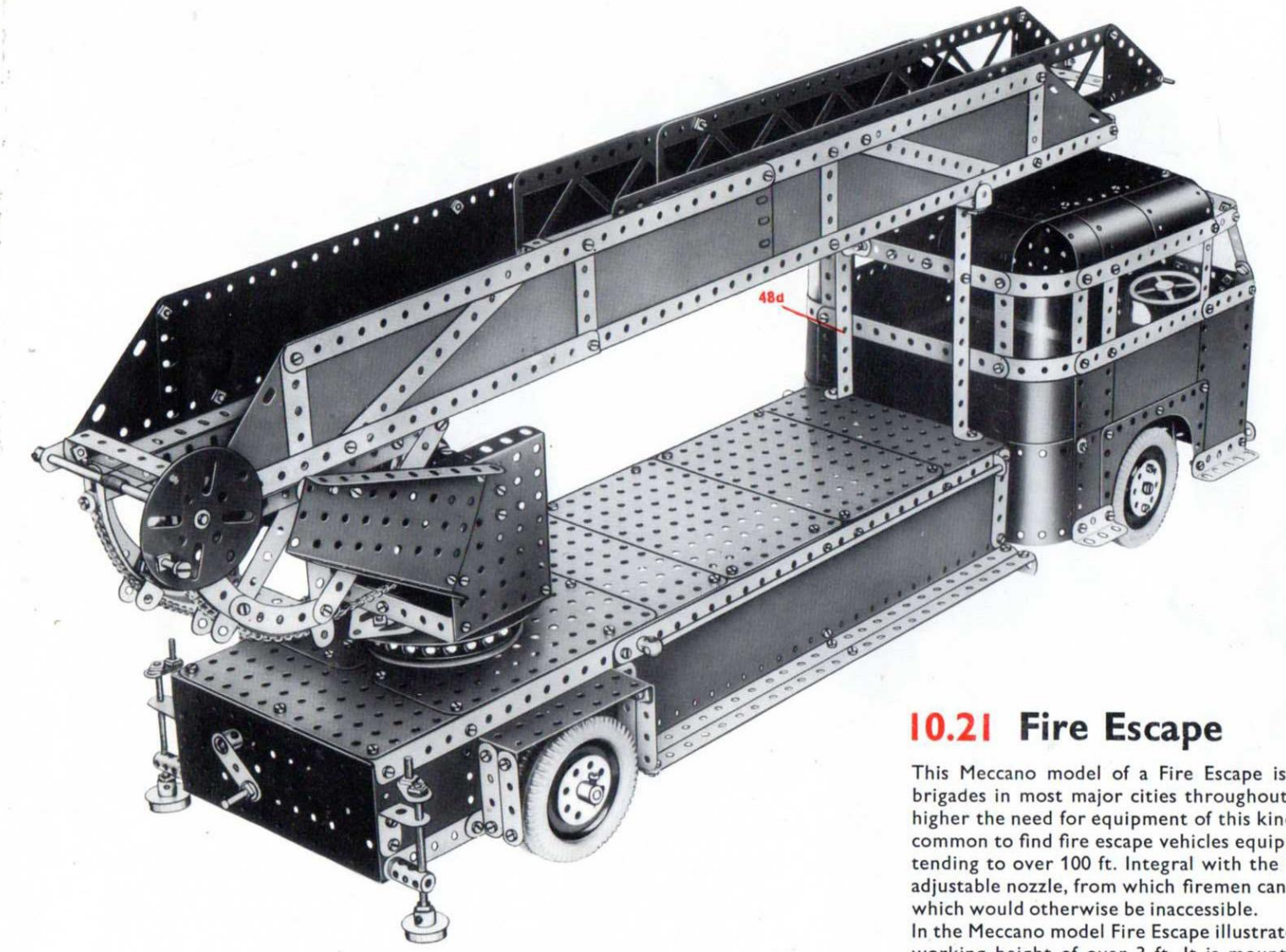
Interior construction of the cab



Front end of the chassis showing the steering arrangement

# MECCANO Special Model Leaflet

Leaflet No. 21



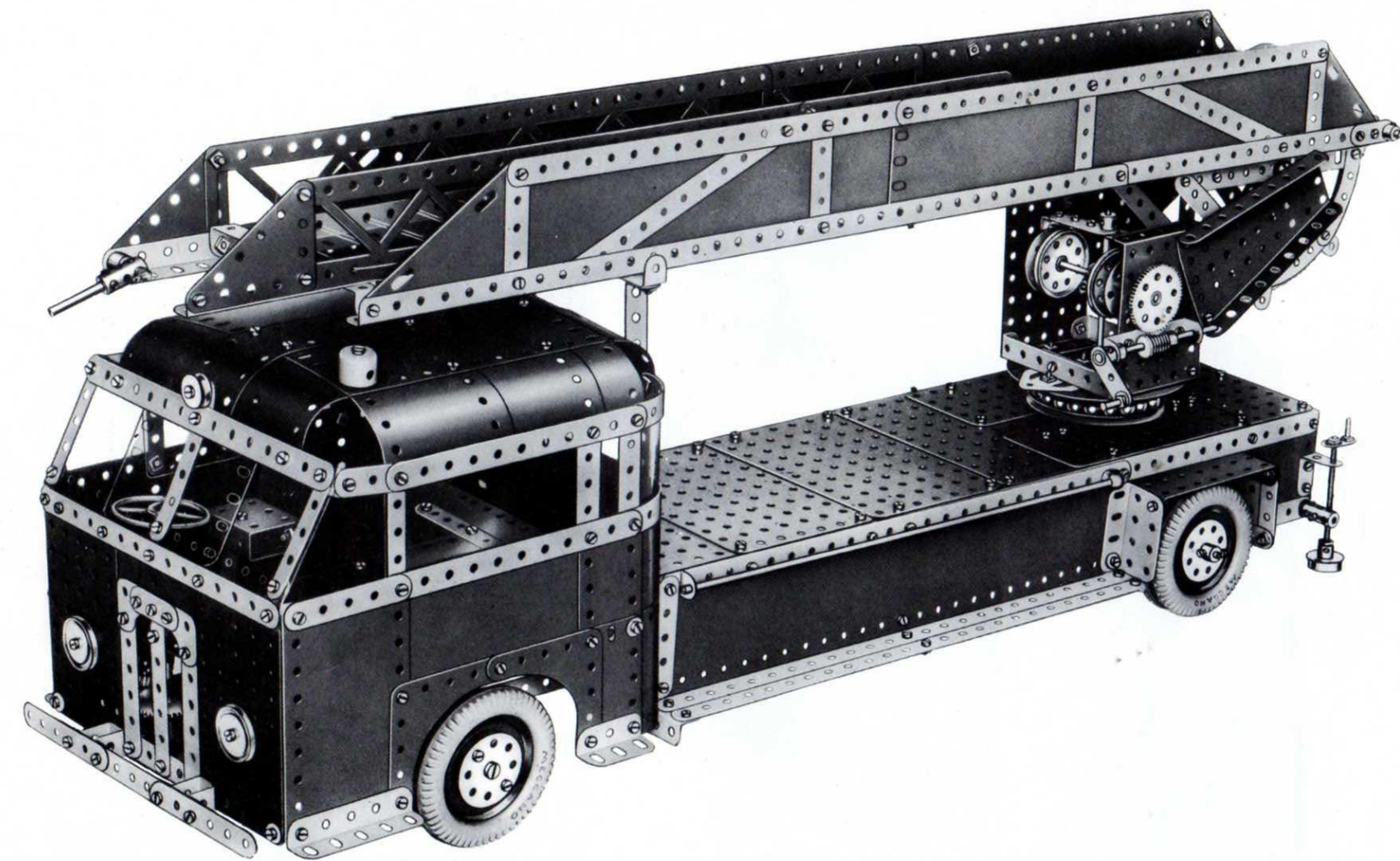
## 10.21 Fire Escape

This Meccano model of a Fire Escape is typical of those used by fire brigades in most major cities throughout the world. As buildings grow higher the need for equipment of this kind becomes imperative, and it is common to find fire escape vehicles equipped with escapes capable of extending to over 100 ft. Integral with the extending ladder is a hose and adjustable nozzle, from which firemen can direct jets of water into places which would otherwise be inaccessible.

In the Meccano model Fire Escape illustrated here, the ladder extends to a working height of over 3 ft. It is mounted on a ball-bearing turntable which can be swivelled by means of crank-operated worm drive through 360 degrees. The elevation of the escape is similarly crank-operated and the ladder is extended and retracted by means of a pulley system. Steadying jacks are provided at the rear of the chassis to give stability when the escape is in operation.

In the model the spacious cab, which in an actual vehicle houses both the driver and crew, is glazed at both front and sides.



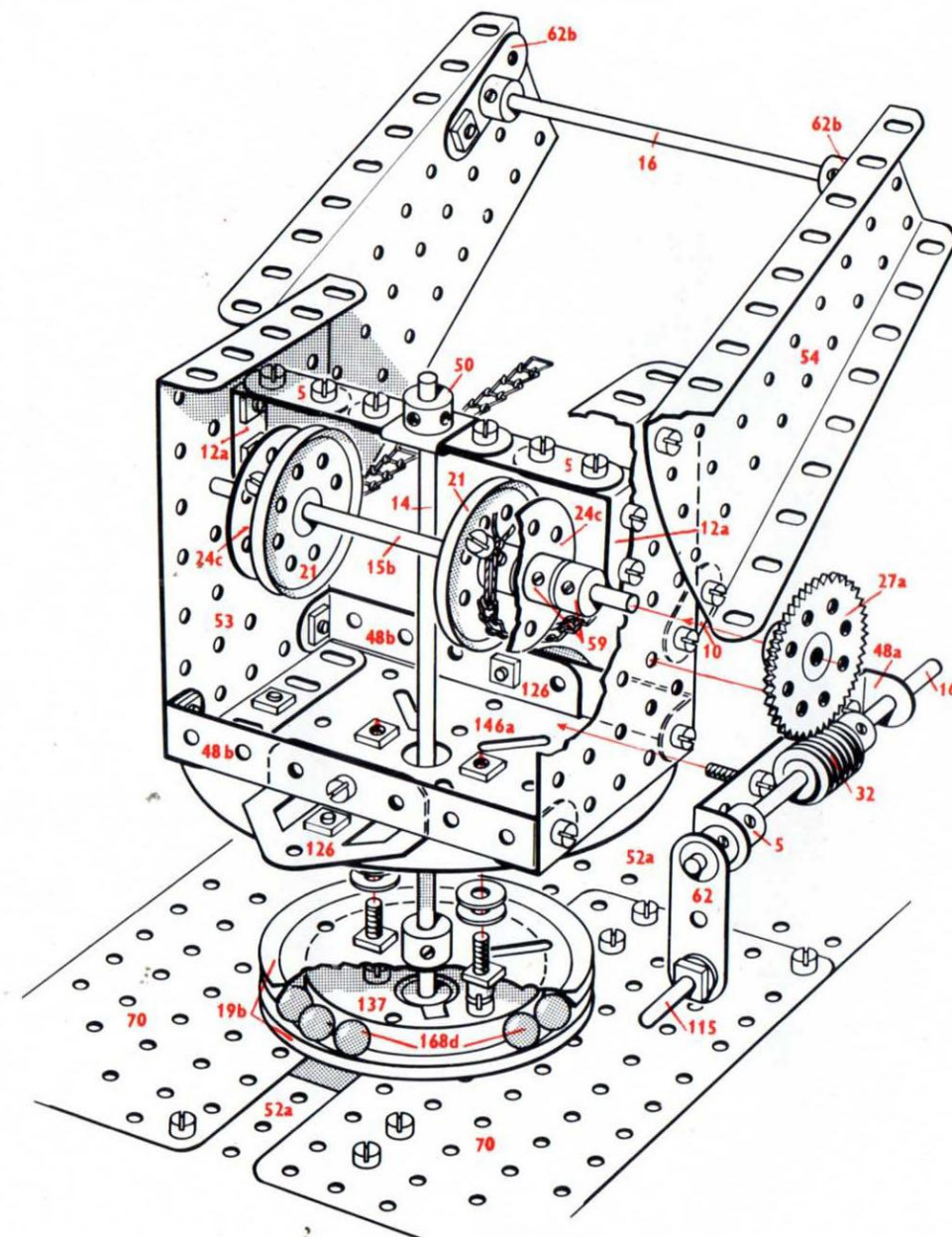


### How to use this leaflet

The constructional details of the model shown in this Leaflet are explained entirely by means of half-tone illustrations and line drawings. Once the 'knack' of reading the drawings has been acquired assembly of the model will be found quite straightforward and simple to carry out. Before starting to build the model it is advisable to study all the illustrations carefully so as to get a good idea of its various sections. Points at which various units of the model are bolted together to form the complete structure are indicated in the drawings by RED DOTS or RED BOLTHEADS whenever possible.

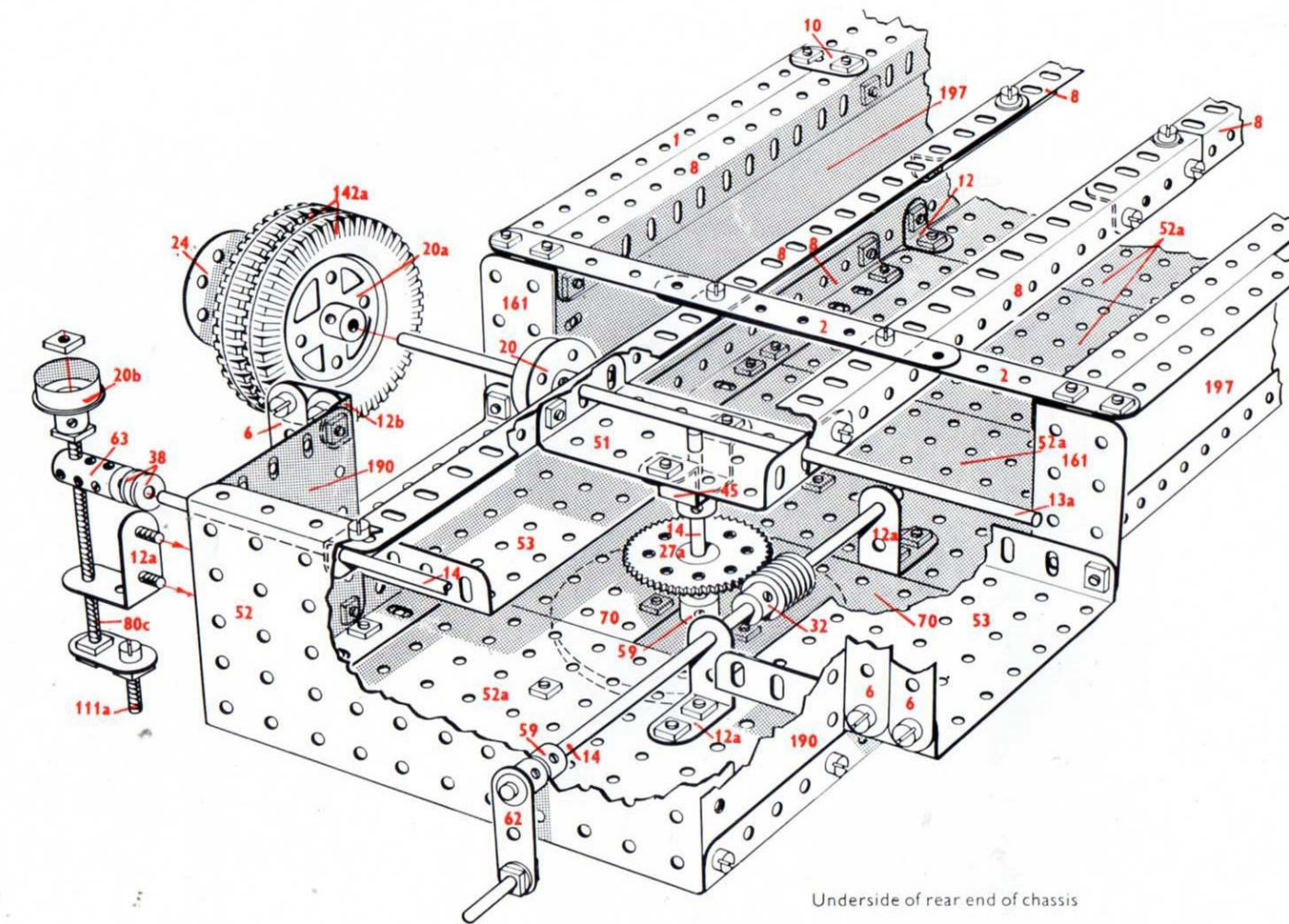
The particular parts used in the assembly of the model can in most cases

be identified simply by looking at the illustrations, but where the identity of a part may not be quite clear, its Part Number is printed on the model illustrations in RED. RED DOTTED pointer lines are used to indicate parts that are hidden behind other parts of the structure. As a further help a list of the parts required to build the model is given in this Leaflet. In this list the catalogue numbers of the parts are printed in RED and the quantity of each part in BLACK. In models fitted with a driving Motor the particular type of Motor is indicated by one of the following Code Marks: M1 = Magic Clockwork Motor; M2 = No. 1 Clockwork Motor; M3 = Meccano Electric Motor.



The Escape turntable mounting and elevating control

8 - 1	2 - 24a	2 - 124
2 - 1b	2 - 24c	1 - 125
23 - 2	1 - 25	4 - 126
4 - 2a	1 - 27	2 - 133a
6 - 3	2 - 27a	2 - 136
8 - 4	2 - 32	1 - 137
26 - 5	334 - 37a	6 - 142a
4 - 6	295 - 37b	1 - 146a
5 - 6a	23 - 38	3 - 147b
8 - 8	2 - 38d	1 - 160
2 - 8a	1 - 40	2 - 161
2 - 8b	3 - 45	1 - 164
4 - 9	2 - 48a	2 - 165
2 - 9d	6 - 48b	1 - 166
2 - 9f	1 - 48c	21 - 168d
10 - 10	2 - 48d	1 - 173a
4 - 11	1 - 50	1 - 176
24 - 12	1 - 51	1 - 185
6 - 12a	2 - 52	2 - 186
2 - 12b	4 - 52a	6 - 188
4 - 12c	4 - 53	4 - 189
2 - 13	2 - 53a	8 - 190
1 - 13a	2 - 54	4 - 191
3 - 14	10 - 59	5 - 192
1 - 15	2 - 62	2 - 193
2 - 15a	2 - 62b	2 - 193a
2 - 15b	6 - 63	2 - 193c
2 - 16	2 - 70	2 - 193e
3 - 17	2 - 80c	6 - 197
1 - 18a	4 - 90	6 - 200
1 - 18b	1 - 94	4 - 201
2 - 19b	2 - 99	2 - 212
2 - 20	2 - 100	3 - 214
6 - 20a	1 - 109	4 - 215
2 - 20b	1 - 111	2 - 222
2 - 21	5 - 111a	2 - 223
2 - 22a	11 - 111c	2 - 226
2 - 23	1 - 115	5 - 235
2 - 24	2 - 115a	2 - 235a



Underside of rear end of chassis