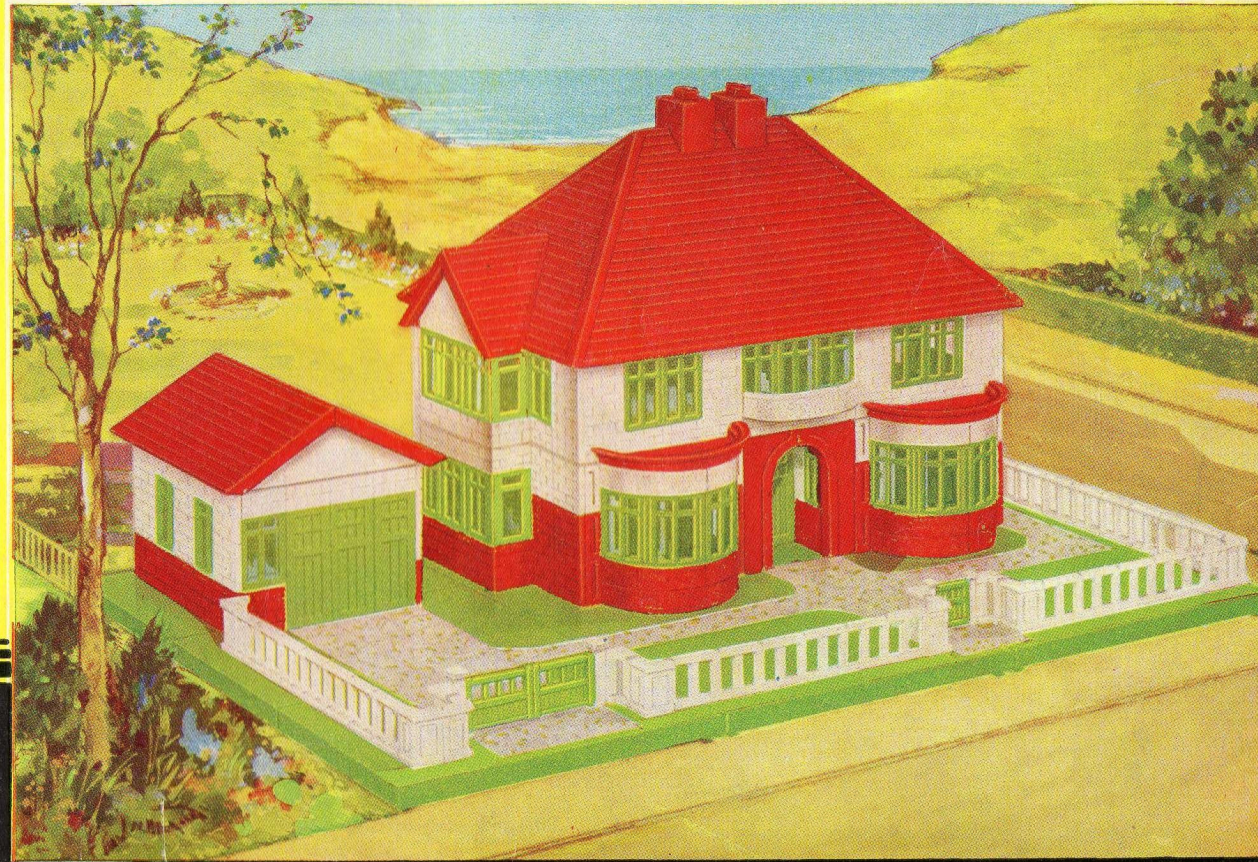


BAYKO

REGISTERED TRADE MARK

The Original Plastic BUILDING SETS

*The fascinating
never failing
diversion for
Boys & Girls*



INSTRUCTIONS
AND
PLANS
FOR SETS 0 TO 3

COPYRIGHT

MANUFACTURED BY PLIMPTON ENGINEERING CO. LTD. LIVERPOOL 1. ENGLAND

MADE IN ENGLAND.

PATENT No. 422645.

FOREIGN PATENTS PENDING

'PERFECT' CHILD'S PLAY

BAYKO

BUILDING SETS

The Wonderful reception given to **BAYKO BUILDING SETS** and the enthusiasm and satisfaction expressed on all sides, is quite easily explained.

BAYKO PARTS are beautifully moulded from attractively Coloured Plastics.

Clean, hygienic and easily sterilized by placing in boiling water or diluted antiseptic, these Sets are ideal for children incapacitated by sickness or disease.

Easy to handle, yet firm and rigid in construction, each model is an excellent replica of the actual building. There is no limit to the range of models that can be built.

Wonderfully constructed, each part fits perfectly into position.

These interesting and fascinating **BAYKO** Sets awake a common interest in both young and old alike.

A Skyscraper, over 6-ft. high, has been constructed, and, except for the extra lengths of Rods, was constructed entirely from Standard Parts.

The models shown in this booklet are only put forward as suggestions. Many others can be built from the ideas and ingenuity of the builder.

One can further increase the scope of Model Building by the purchase of a Conversion Set. Thus, by purchasing a No. 0X Set, one converts a No. 0 Set into a No. 1 Set, and so on.

Converting Sets cannot alone be used for building models, but must be used with one of the Standard Sets.

Only by actually building any of the hundreds of models, can one realise the spirit of achievement and satisfaction derived from building with BAYKO BUILDING SETS.

Many new parts, detailed and illustrated from page 33 onwards, are now available, and when used in conjunction with any standard set add greatly to their scope and variety. Certain of these new parts are contained in sizes 3X and 4, which are now available. These parts and also those contained in standard sets may be purchased separately ONLY from your dealer.

Sizes of Standard BAYKO BUILDING SETS

No. 0 SET	No. 0X — CONVERTING No. 0 INTO No. 1
No. 1 SET	No. 1X — CONVERTING No. 1 INTO No. 2
No. 2 SET	No. 2X — CONVERTING No. 2 INTO No. 3
No. 3 SET	No. 3X — CONVERTING No. 3 INTO No. 4
No. 4 SET					

You can see from the above sizes of "BAYKO" BUILDING SETS, that, by purchasing Converting Sets, it is possible to increase from your present Set, right up to No. 4 Set.

Parts contained in Standard Sets

Ref. No.		Colour	0	1	2	3
1	BASES	Green	1	2	2	4
3	LARGE ROOF	Red	—	—	—	1
2	MEDIUM ROOF	Red	—	—	1	1
28	SMALL ROOF	Red	—	1	1	1
30	FLAT ROOFS	Red	2	2	2	2
29	ROOF ENDS	White	2	2	2	2
27	END BRICKS	Red	4	6	8	12
27	END BRICKS	White	8	10	16	20
4	BRICKS	Red	11	18	24	40
4	BRICKS	White	9	10	21	40
5	HALF BRICKS	Red	—	2	2	2
5	HALF BRICKS	White	11	13	21	25
5L	LONG BRICKS	Red	—	4	4	5
5L	LONG BRICKS	White	—	2	2	8
26	CURVED BRICKS	Red	2	2	4	8
26	CURVED BRICKS	White	1	1	2	4
8	DOORS	Green	2	2	3	5
7	WINDOWS	Green	6	8	19	19
7L	LARGE WINDOWS	Green	—	2	2	3
25	CURVED WINDOWS	Green	1	1	2	4
19	BAY WINDOW COVERS	Red	—	—	1	2
15L	PILLARS, 3 B	White	—	2	4	8
10	CHIMNEYS	Red	1	1	1	2
9	CANOPY	Red	1	1	1	1
12S	STEPS	Grey	—	—	2	4
11	ARCH	Red	—	—	—	1
	FLOOR, 7 x 7 HOLE		—	—	—	1
	FLOOR, 15 x 6 HOLE		—	—	—	2
	FLOOR, 11 x 7 HOLE		—	—	—	1
	FLOOR, 13 x 9 HOLE		—	—	1	1
	FLOOR, 15 x 11 HOLE		—	—	—	1
	No. 1 BRICK RODS (see Diagram, page 2)		12	12	12	18
	No. 1 " " " " " "		12	18	18	18
	No. 2 " " " " " "		6	6	6	12
	No. 3 " " " " " "		24	36	36	52
	No. 4 " " " " " "		4	4	36	44
	No. 5 " " " " " "		—	—	36	36
	No. 6 " " " " " "		—	—	4	4
	SCREWDRIVER		—	1	1	1
	BASE LINKS WITH SCREWS		—	2	2	6
	CORNER TIES		4	5	8	10
	TIE BARS, STRAIGHT		8	8	10	16
	0, 1, 2 and 3 INSTRUCTION BOOK		1	1	1	1

Parts contained in Converting Sets

Ref. No.		Colour	0x	1x	2x
1	BASES	Green	1	—	2
3	LARGE ROOF	Red	—	—	1
2	MEDIUM ROOF	Red	—	1	—
28	SMALL ROOF	Red	1	—	—
30	FLAT ROOF	Red	—	—	—
29	ROOF ENDS	White	—	—	—
27	END BRICKS	Red	2	2	4
27	END BRICKS	White	2	6	4
4	BRICKS	Red	7	6	16
4	BRICKS	White	1	11	19
5	HALF BRICKS	Red	2	—	—
5	HALF BRICKS	White	2	8	4
5L	LONG BRICKS	Red	4	—	1
5L	LONG BRICKS	White	2	—	6
26	CURVED BRICKS	Red	—	2	4
26	CURVED BRICKS	White	—	1	2
8	DOORS	Green	—	1	2
7	WINDOWS	Green	2	11	—
7L	LARGE WINDOWS	Green	2	—	1
25	CURVED WINDOWS	Green	—	1	2
19	BAY WINDOW COVERS	Red	—	1	1
15L	PILLARS, 3 B	White	2	2	4
10	CHIMNEYS	Red	—	—	1
9	CANOPY	Red	—	—	—
12S	STEPS	Grey	—	2	2
11	ARCH	Red	—	—	1
	FLOOR, 7 x 7 HOLE		—	—	1
	FLOOR, 15 x 6 HOLE		—	—	2
	FLOOR, 11 x 7 HOLE		—	—	1
	FLOOR, 13 x 9 HOLE		—	1	—
	FLOOR, 15 x 11 HOLE		—	—	1
	No. 1 BRICK RODS (See Diagram, page 2)		—	—	6
	No. 1 " " " " " "		6	—	—
	No. 2 " " " " " "		—	—	6
	No. 3 " " " " " "		12	—	16
	No. 4 " " " " " "		—	32	8
	No. 5 " " " " " "		—	36	—
	No. 6 " " " " " "		—	4	—
	SCREWDRIVER		1	—	—
	BASE LINKS, WITH SCREWS		2	—	4
	CORNER TIES		1	3	2
	TIE BARS, STRAIGHT		—	3	6

Spare Parts can only be obtained through your Local Dealer, from whom details of prices can be obtained, on request.
In the event of difficulty regarding supplies we will be pleased to supply you with the name and address of your nearest dealer.

PARTS CONTAINED IN
STANDARD SETS O, 1, 2 and 3

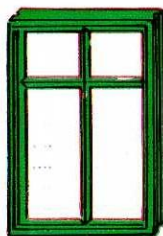
(ACTUAL
SIZE)

BAYKO

BUILDING SETS



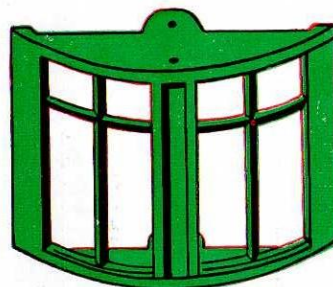
DOOR No. 8



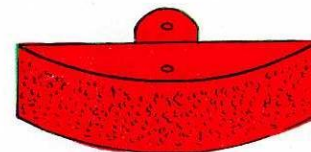
WINDOW
No. 7



LARGE WINDOW
No. 7L



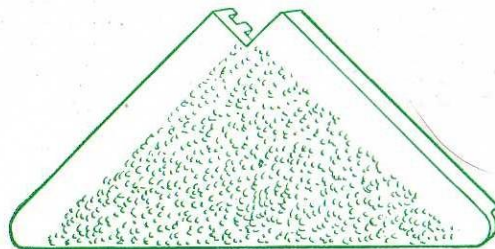
CURVED WINDOW No. 25



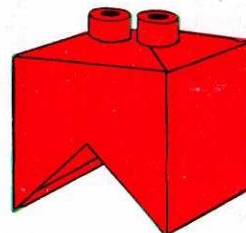
CURVED
BRICK
No. 26



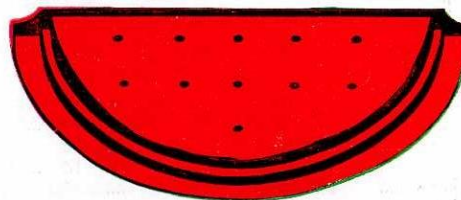
CANOPY No. 9



ROOF END No. 29



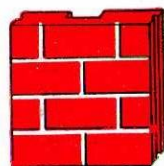
CHIMNEY No. 10



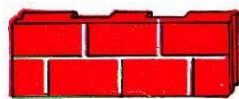
BAY WINDOW COVER
No. 19



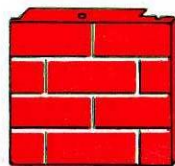
HALF BRICK
No. 5



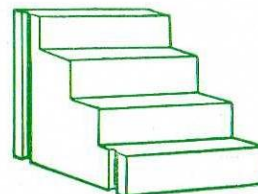
BRICK No. 4



LONG BRICK No. 5L



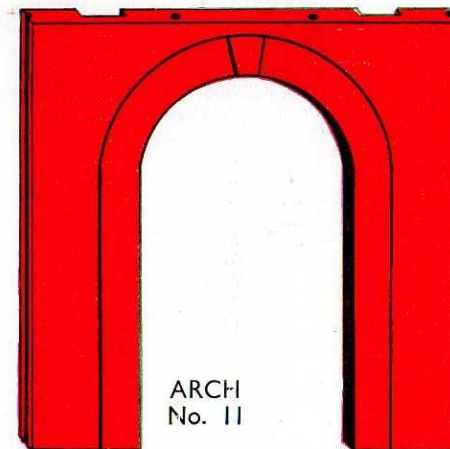
END BRICK
No. 27



STEP No. 12S



PILLAR
No. 15L



ARCH
No. 11

LENGTH OF RODS (Actual Size)

LONGER RODS CAN BE SUPPLIED TO ORDER

No. $\frac{1}{2}$
1
2
3

8
7
6
5
4

HOW TO BUILD A "BAYKO" MODEL

After deciding which model you want to build, count out the listed parts necessary for doing so. It is a good plan to choose a model from a No. 0 size to commence with should you have a large set, in order to first become acquainted with the method of building.

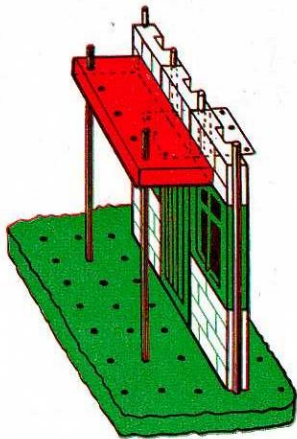
Join the bases, when necessary, by means of the base links as shown on Page 4. Place the rods in the positions marked on the plan, taking care to use the correct lengths. Use standard length rods as marked on each diagram, except where otherwise indicated, for example—on Page 9. Entrance Gateway Model has standard 3 Brick Rods, except where figures 1 and 2 Brick Rods are placed. The same applies to all models.

Now fit bottom row of parts in position exactly according to plan, the particular part being indicated by its initial letter.

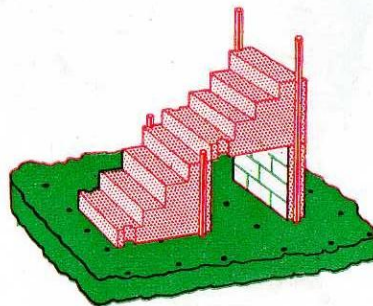
By referring to the diagram on Page 4 the method of fitting Bayko parts is clearly shown. Particularly notice the method of using curved bricks and curved windows and study notes 3 and 6 underneath the diagram shown overleaf.

It is helpful to use Tie Bars and Corner Ties after the 3rd row of building.

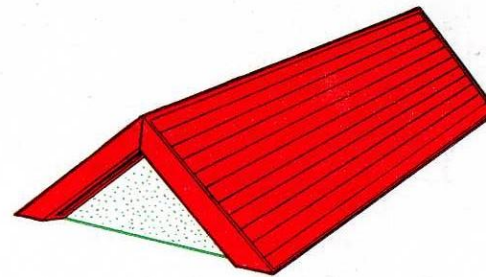
Below are illustrated methods of using certain parts



Use of Canopy. Note Corner Tie as support



Use of two sets of Steps



Sectional Roof complete, showing End Section

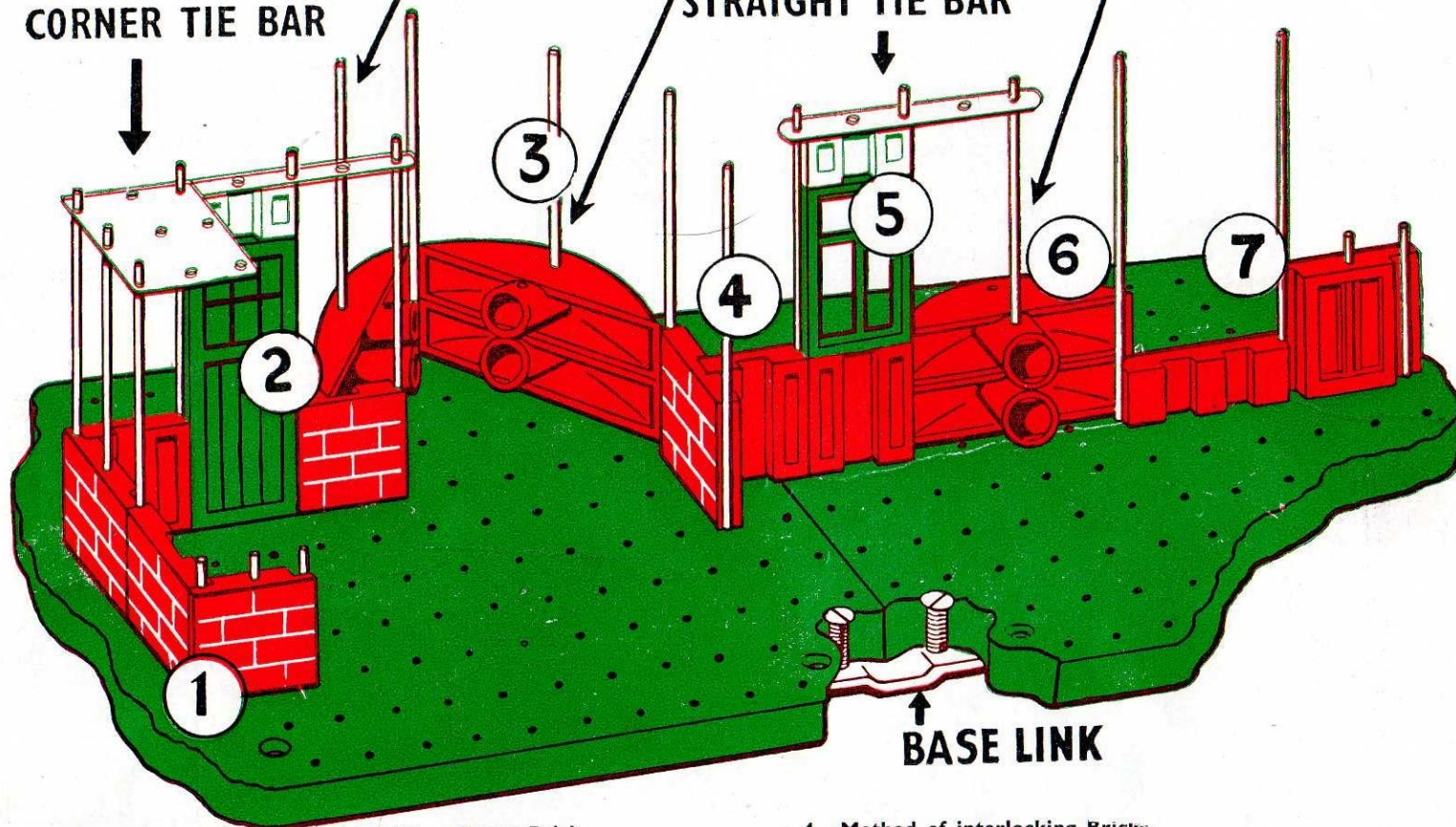


Method of assembling Sectional Roof

NOTE—ONE ROD ONLY MUST BE USED WITH CURVED BRICKS AND CURVED WINDOWS

CORNER TIE BAR

STRAIGHT TIE BAR

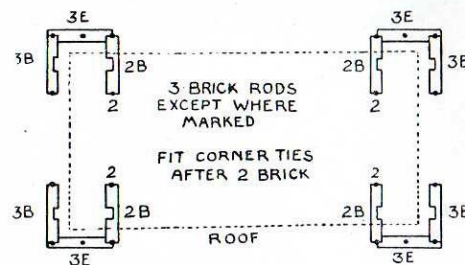
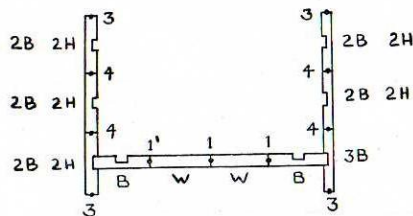


1. Corner made by using End Brick with ordinary Brick.
2. Door plus Half Brick equals three Bricks in height.
3. Commencement of Full Bay Window; note wires are placed through the OUTSIDE hole ONLY.

4. Method of interlocking Bricks.
5. Brick, Window and Half Brick equals three Bricks in height.
6. Commencement of Small Bay Window; note wires are placed through the INSIDE hole ONLY.

7. Long Brick, two of which are equal in length to three Bricks.

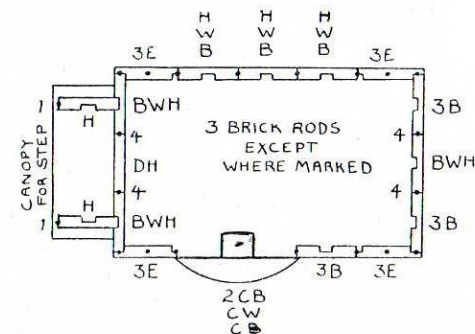
BUILDING SET No. 0



Base	1	Bricks, White	9
Flat Roof	1	No. 2 Brick Rods	4
End Bricks, Red	4	No. 3 Brick Rods	16
End Bricks, White	8	Corner Ties	4
Bricks, Red	11			

B	Brick	H	Half Brick
BWC	Bay Window Cover	LB	Long Brick
CB	Curved Brick	LW	Large Window
CW	Curved Window	P	Pillar
D	Door	W	Window
E	End Brick		

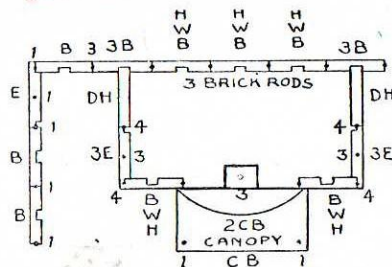
Base	1	Door, Green	1
Flat Roofs	2	Curved Window,		
Roof Ends	2	Green	1
End Bricks, Red	4	Canopy, Red	1
End Bricks, White	8	Chimney, Red	1
Bricks, Red	9	No. 1 Brick Rods	2
Bricks, White	6	No. 3 Brick Rods	16
Half Bricks, White	9	No. 4 Brick Rods	4
Curved Bricks, Red	2	Corner Ties	4
Curved Brick, White	1	Tie Bars, Straight	6
Windows, Green	6			



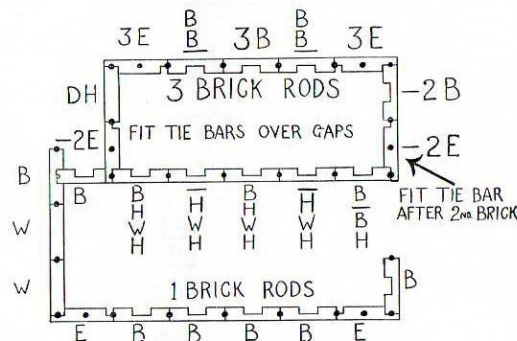
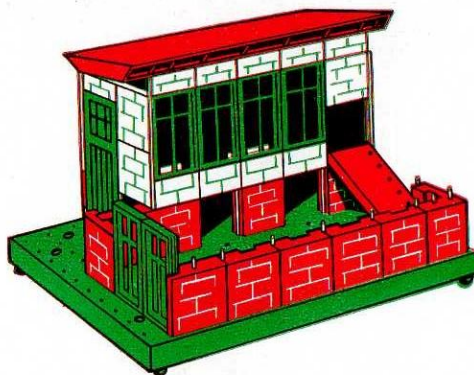
PARTS REQUIRED

Base	1	Curved Brick, White	1
Flat Roofs	2	Windows, Green	5
Roof Ends	2	Doors, Green	2
End Bricks, Red	2	Canopy, Red	1
End Bricks, White	5	No. 1 Brick Rods	7
Bricks, Red	7	No. 3 Brick Rods	11
Bricks, White	7	No. 4 Brick Rods	4
Half Bricks, White	7	Corner Ties	4
Curved Bricks, Red	2	Tie Bars, Straight	4

SHOP No. 0



POULTRY HOUSE No. 0



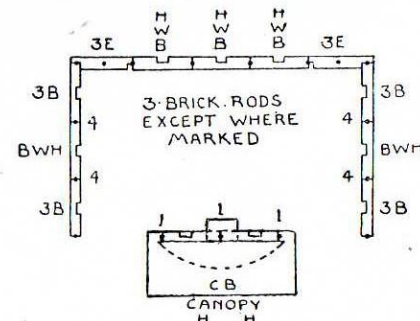
PARTS REQUIRED

Base	1	Door, Green	1
Flat Roof	1	Canopy, Red	1
End Bricks, Red	4	No. 3 Brick Rod	1
End Bricks, White	8	No. 1 Brick Rods	12
Bricks, Red	11	No. 3 Brick Rods	18
Bricks, White	9	Corner Ties	4
Half Bricks, White	10	Tie Bars, Straight	6
Windows, Green	6		

PARTS REQUIRED

Base	1	Curved Brick, White	1
Flat Roofs	2	Windows, Green	5
Roof Ends	2	Canopy, Red	1
End Bricks, Red	2	No. 1 Brick Rods	3
End Bricks, White	4	No. 3 Brick Rods	10
Bricks, Red	9	No. 4 Brick Rods	4
Bricks, White	8	Corner Ties	2
Half Bricks, White	7	Tie Bars, Straight	6

SEASIDE SHELTER No. 0



SUGGESTED MODELS BUILT FROM

BAYKO

BUILDING SET No. 1

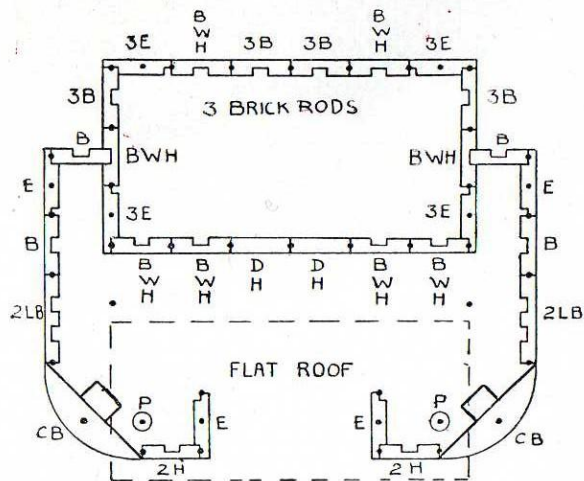
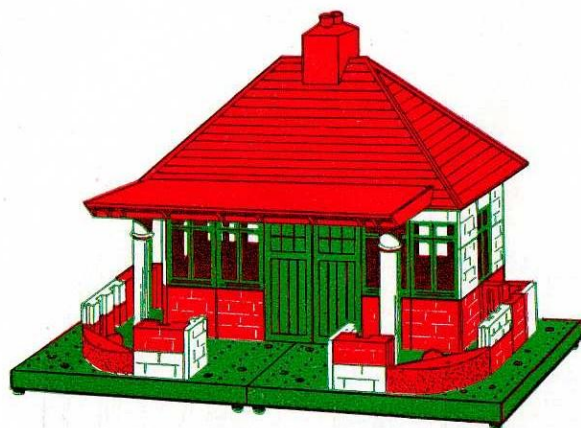
SEASIDE CHALET No. 1

PARTS REQUIRED

Bases	2
Small Roof	1
Flat Roof	1
End Bricks, Red	6
End Bricks, White	10
Bricks, Red	16
Bricks, White	8
Half Bricks, Red	2
Half Bricks, White	12
Long Bricks, Red	2
Long Bricks, White	2
Curved Bricks, Red	2
Windows, Green	8
Doors, Green	2
Pillars, White, 3B	2
Chimney, Red	1
No. 3 Brick Rods	2
No. 1 Brick Rods	18
No. 3 Brick Rods	26
Base Links	2
Screws	4
Corner Ties	4
Tie Bars, Straight	6

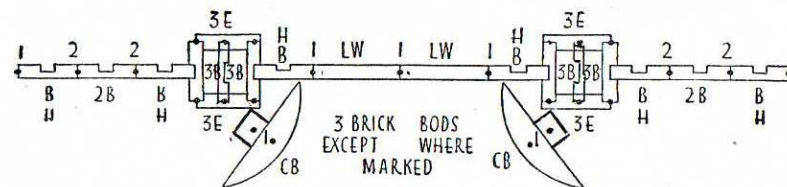
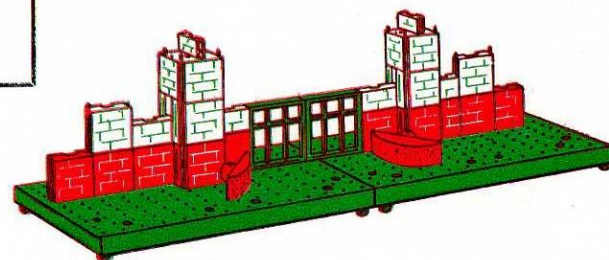
PARTS REQUIRED

Bases	2
End Bricks, Red	4
End Bricks, White	8
Bricks, Red	12
Bricks, White	10
Half Bricks, White	8
Curved Bricks, Red	2
Large Windows, Green	2
No. 1 Brick Rods	7
No. 2 Brick Rods	4
No. 3 Brick Rods	12
Base Links	2
Screws	4
Corner Ties	2

ABBREVIATIONS USED
ON ALL BAYKO PLANS

B	Brick
BWC	Bay Window Cover
CB	Curved Brick
CW	Curved Window
D	Door
E	End Brick
H	Half Brick
LB	Long Brick
LW	Large Window
P	Pillar
W	Window

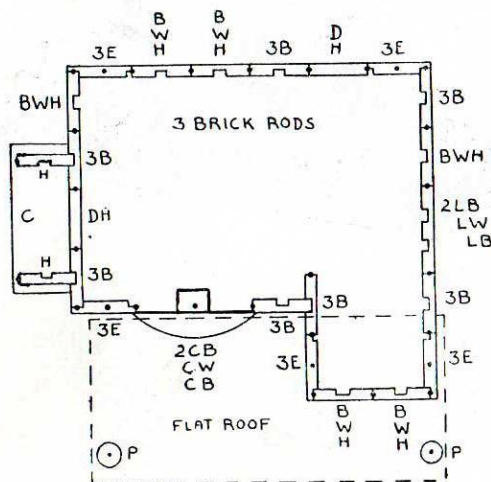
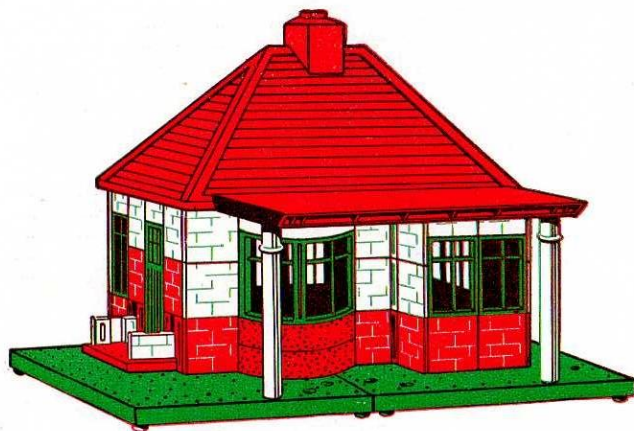
ENTRANCE GATE No. 1



SUGGESTED MODELS BUILT FROM

BAYKO

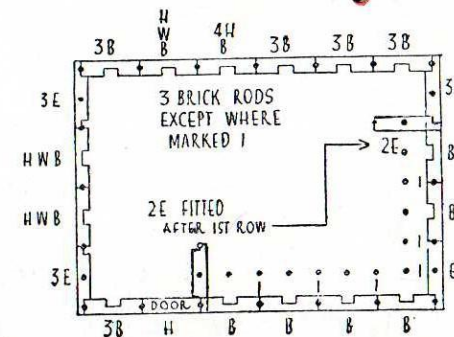
BUILDING SET No. 1

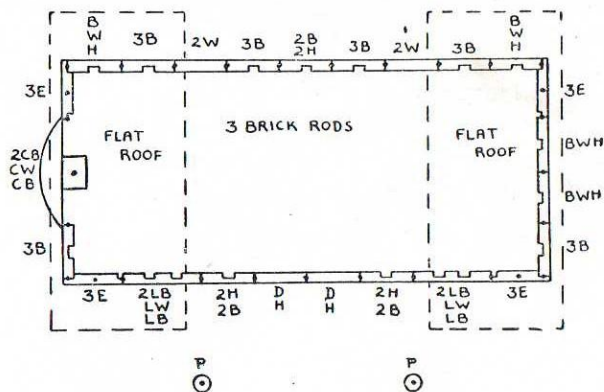
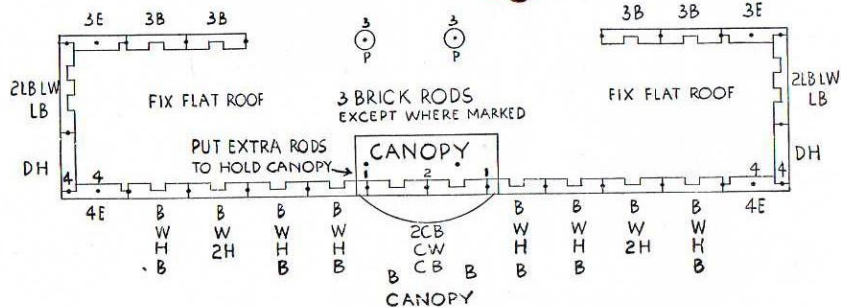
MODERN BUNGALOW No. 1**PARTS REQUIRED**

Bases	2
Flat Roof	1
Small Roof	1
End Bricks, Red	5
End Bricks, White	10
Bricks, Red	17
Bricks, White	10
Half Bricks, White	10
Long Bricks, Red	2
Long Brick, White	1
Curved Bricks, Red	2
Curved Brick, White	1
Windows, Green	6
Large Window, Green	1
Curved Window, Green	1
Doors, Green	2
Pillars, White, 3B	2
Canopy, Red	1
Chimney, Red	1
No. 1 Brick Rods	2
No. 3 Brick Rods	30
Base Links	2
Screws	4
Corner Ties	5
Tie Bars, Straight	7

PARTS REQUIRED

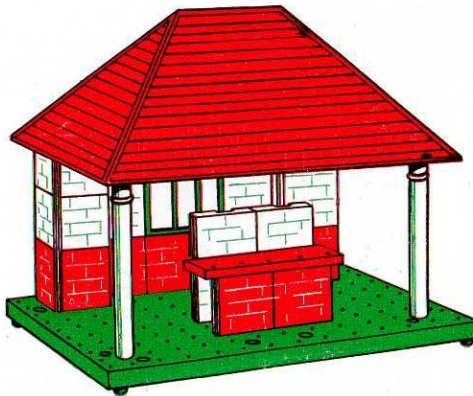
Base	1	Windows, Green	3
Small Roof	1	Door, Green	1
End Bricks, Red	4	No. 1 Brick Rods	7
End Bricks, White	10	No. 3 Brick Rods	32
Bricks, Red	15	Corner Ties	4
Bricks, White	10	Tie Bars, Straight	7
Half Bricks, White	8		

CAGE No. 1



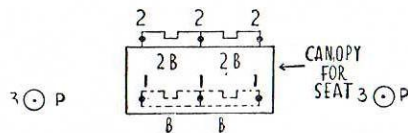
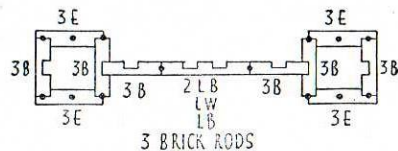
B Brick	H Half Brick
BWC Bay Window Cover	LB Long Brick
CB Curved Brick	LW Large Window
CW Curved Window	P Pillar
D Door	W Window
E End Brick	

GARDEN SEAT No. 1



PARTS REQUIRED

Base	1
Small Roof	1
End Bricks, Red	4
End Bricks, White	8
Bricks, Red	8
Bricks, White	10
Half Bricks, White	12
Long Bricks, Red	2
Long Brick, White	1
Large Window, Green	1
Canopy, Red	1
Pillars, White, 3B	2
No. 1 Brick Rods	3
No. 2 Brick Rods	3
No. 3 Brick Rods	16
Corner Ties	2
Tie Bars, Straight	2



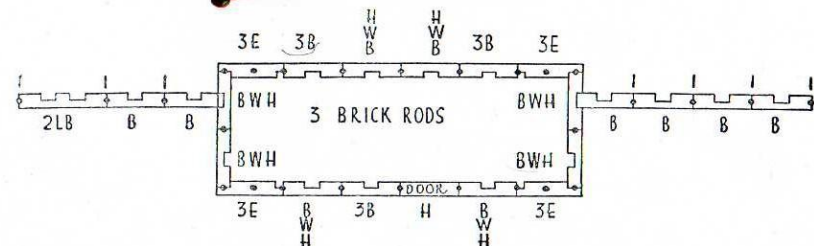
ABBREVIATIONS USED ON ALL BAYKO PLANS

B Brick	H Half Brick
BWC Bay Window Cover	LB Long Brick
CB Curved Brick	LW Large Window
CW Curved Window	P Pillar
D Door	W Window
E End Brick		

PARTS REQUIRED

Bases	2	Door, Green	1
Small Roof	1	Pillars, White, 3B	2
End Bricks, Red	4	No. 1 Brick Rods	7
End Bricks, White	8	No. 3 Brick Rods	22
Bricks, Red	17	Base Links	2
Bricks, White	6	Screws	4
Half Bricks, White	9	Corner Ties	4
Long Bricks, Red	2	Tie Bars, Straight	4
Windows, Green	8			

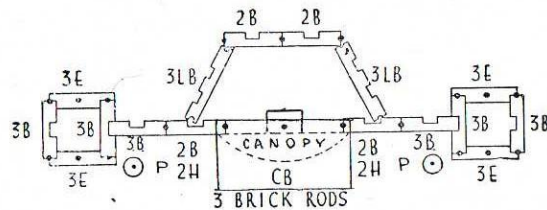
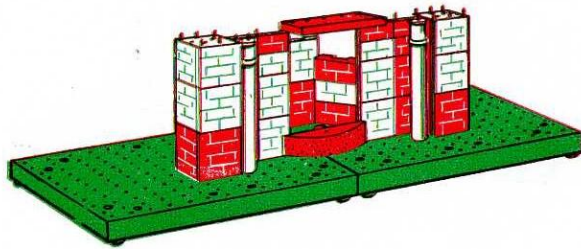
STATION HALT No. 1



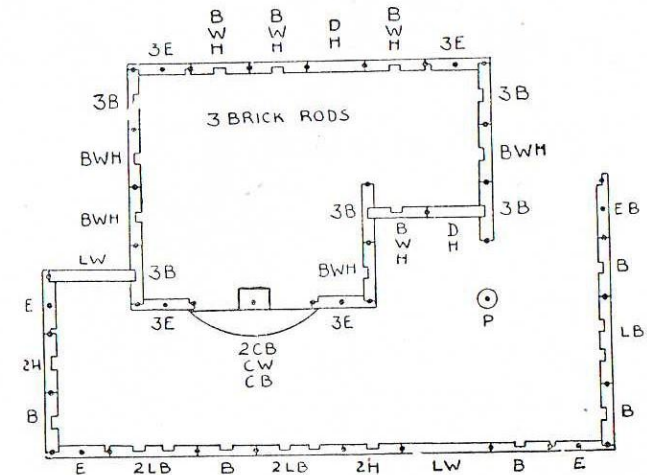
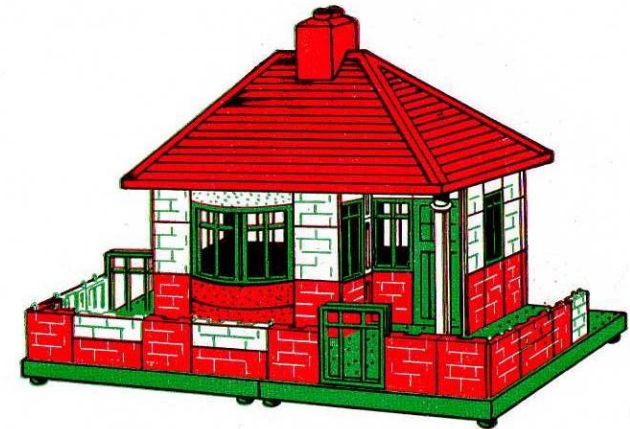
3P

3P

Bases	2	Canopy, Red	1
End Bricks, Red	4	Pillars, White, 3B	2
End Bricks, White	8	No. 1 Brick Rod	1
Bricks, Red	16	No. 2 Brick Rods	3
Bricks, White	10	No. 3 Brick Rods	18
Half Bricks, Red	2	Base Links	2
Half Bricks, White	2	Screws	4
Long Bricks, Red	4	Corner Ties	2
Long Bricks, White	2	Tie Bars, Straight	2
Curved Brick, Red	1		



Bases	2
Small Roof	1
End Bricks, Red	6
End Bricks, White	10
Bricks, Red	18
Bricks, White	10
Half Bricks, White	11
Half Bricks, Red	2
Long Bricks, Red	4
Long Bricks, White	2
Curved Bricks, Red	2
Curved Brick, White	1
Windows, Green	8
Curved Window, Green	1
Large Windows, Green	2
Doors, Green	2
Chimney, Red	1
Pillar, White, 3B	1
No. $\frac{3}{8}$ Brick Rods	2
No. 1 Brick Rods	18
No. 3 Brick Rods	26
Corner Ties	4
Tie Bars, Straight	7
Base Links	2
Screws	4

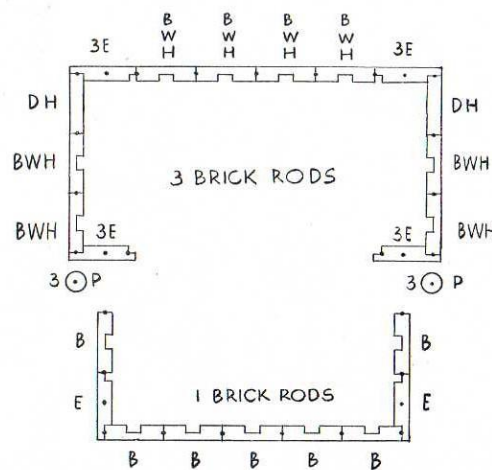


MARKET STALL No. 1

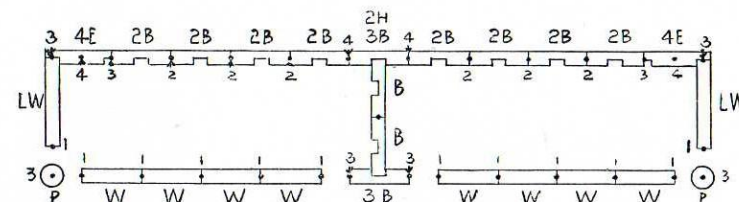


PARTS REQUIRED

Bases	2
Small Roof	1
Flat Roof	1
End Bricks, Red	6
End Bricks, White	8
Bricks, Red	10
Bricks, White	5
Half Bricks, White	10
Doors, Green	2
Windows, Green	8
Pillars, White, 3B	2
No. 1 Brick Rods	12
No. 3 Brick Rods	21
Base Links	2
Screws	4
Corner Ties	4
Tie Bars, Straight	4



*You can make your
No. 1 Set into a No. 2
Set by purchasing a
No. 1x
CONVERTING SET*



SHEEP PEN No. 1



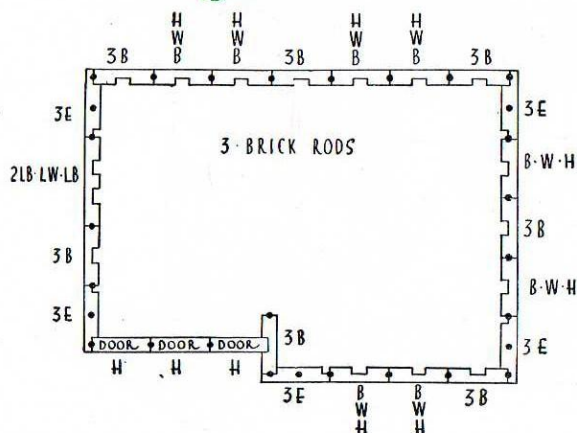
PARTS REQUIRED

Bases	2	Pillars, White, 3B	2
Flat Roofs	2	No. 1 Brick Rods	13
End Bricks, Red	4	No. 2 Brick Rods	6
End Bricks, White	4	No. 3 Brick Rods	8
Bricks, Red	14	No. 4 Brick Rods	4
Bricks, White	10	Base Links	2
Half Bricks, White	2	Screws	4
Windows, Green	8	Tie Bars, Straight	1
Large Windows, Green	2			

PARTS REQUIRED

Bases	2	Windows, Green	8
Medium Roof	1	Large Window, Green	1
End Bricks, Red	5	Doors, Green	3
End Bricks, White	10	No. 3 Brick Rods	29
Bricks, Red	15	Base Links	2
Bricks, White	14	Screws	4
Half Bricks, White	11	Corner Ties	5
Long Bricks, Red	2	Tie Bars, Straight	6
Long Brick, White	1		

GARAGE No. 2



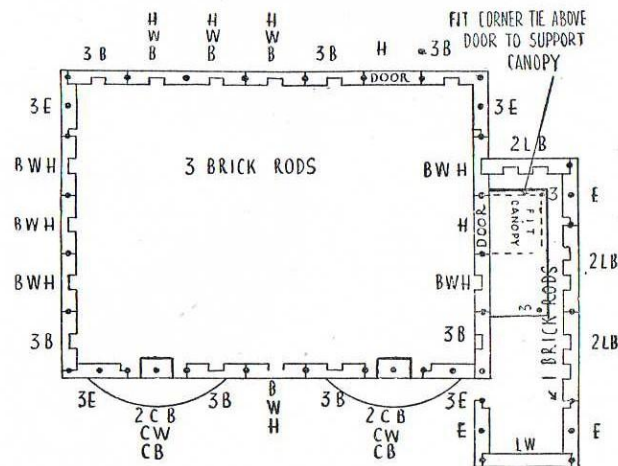
PARTS REQUIRED

Bases	2
Medium Roof	1
End Bricks, Red	5
End Bricks, White	10
Bricks, Red	16
Bricks, White	14
Half Bricks, White	11
Long Bricks, Red	4
Long Bricks, White	2
Curved Bricks, Red	4
Curved Bricks, White	2
Windows, Green	9
Large Window, Green	1
Curved Windows, Green	2
Doors, Green	2
Canopy, Red	1
Chimney, Red	1
No. 1 Brick Rods	10
No. 3 Brick Rods	32
Base Links	2
Screws	4
Corner Ties	5
Tie Bars, Straight	8

ABBREVIATIONS USED ON ALL BAYKO PLANS

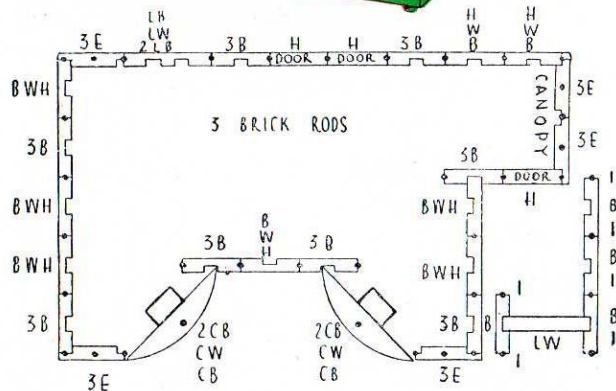
B	Brick	H	Half Brick
BWC	Bay Window Cover	LB	Long Brick
CB	Curved Brick	LW	Large Window
CW	Curved Window	P	Pillar
D	Door	W	Window
E	End Brick		

VILLA No. 2

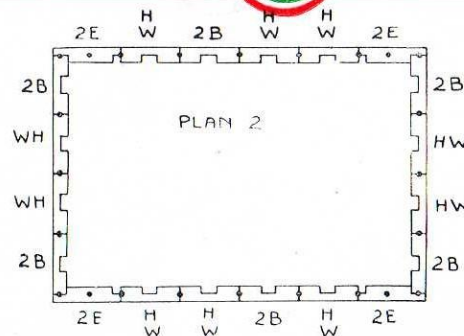


After you have built the models illustrated, try out some of your own ideas. You will be amazed at the large number of realistic models that you can make.

SMALL HOUSE No. 2



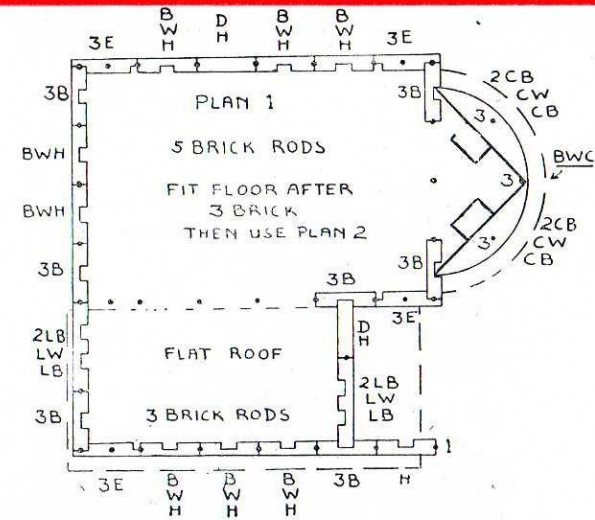
PARTS REQUIRED		
Bases	2	
Medium Roof	1	
End Bricks, Red	5	
End Bricks, White	10	
Bricks, Red	20	
Bricks, White	16	
Half Bricks, White	11	
Long Bricks, Red	2	
Long Brick, White	1	
Curved Bricks, Red	4	
Curved Bricks, White	2	
Windows, Green	8	
Large Windows, Green	2	
Curved Windows, Green	2	
Green	2	
Chimney, Red	1	



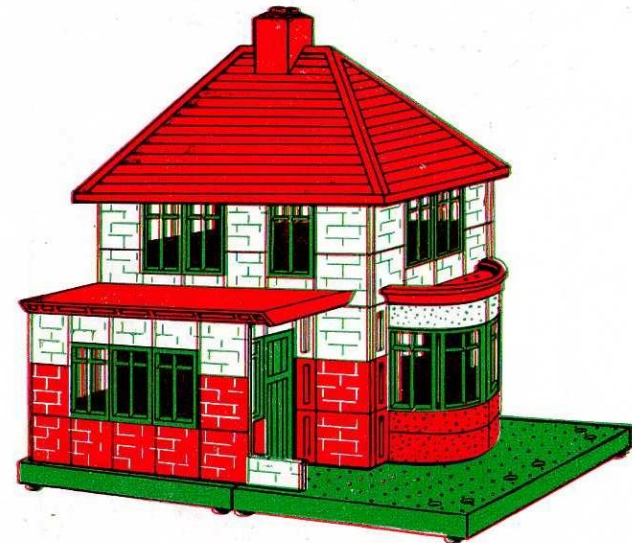
PARTS REQUIRED

Bases	2
Small Roof	1
Flat Roof	1
End Bricks, Red	8
End Bricks, White	12
Bricks, Red	22
Bricks, White	19
Half Bricks, White	21
Curved Bricks, Red	4
Curved Bricks, White	2
Long Bricks, Red	4
Long Bricks, White	2
Windows, Green	18
Large Windows, Green	2
Curved Windows, Green	2
Doors, Green	2
Chimney, Red	1
Bay Window Cover	1
Floor, 13 x 9 Hole	1
No. 1 Brick Rod	1
No. 3 Brick Rods	12
No. 5 Brick Rods	24
Base Links	2
Screws	4
Corner Ties	4
Tie Bars, Straight	6

Canopy, Red	1
Doors, Green	3
No. 1 Brick Rod	6
No. 3 Brick Rods	34
Base Links	2
Screws	4
Corner Ties	5
Tie Bars, Straight	8



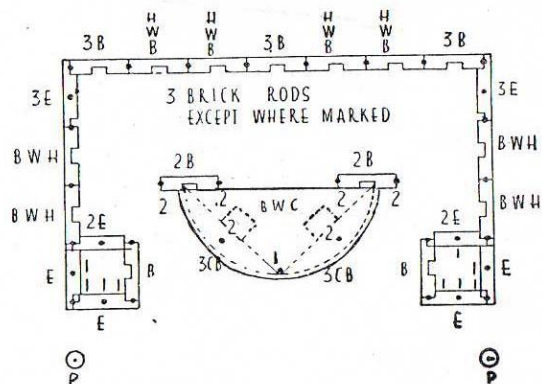
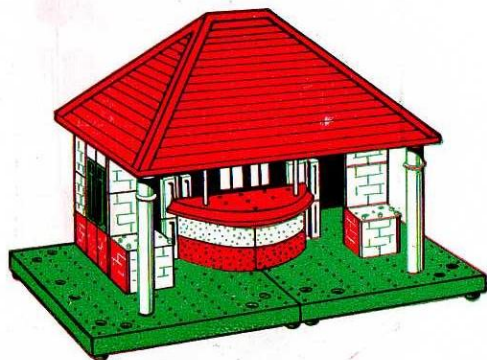
DOUBLE-STOREY HOUSE No. 2



PARTS REQUIRED

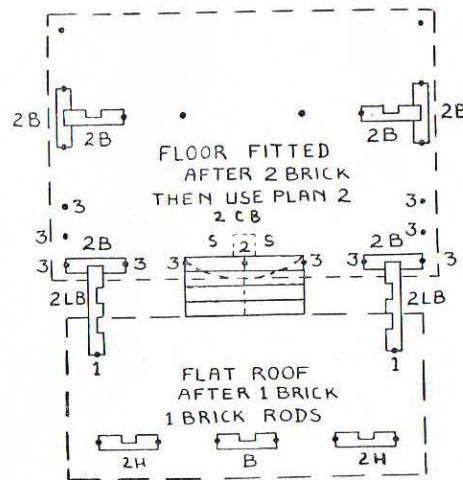
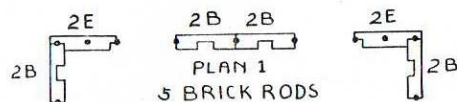
Bases	2	Pillars, White, 3B	2
Medium Roof	1	Bay Window Cover	1
End Bricks, Red	4	No. 1 Brick Rods	9
End Bricks, White	10	No. 2 Brick Rods	6
Bricks, Red	13	No. 3 Brick Rods	22
Bricks, White	10	Base Links	2
Half Bricks, White	8	Screws	4
Curved Bricks, Red	4	Corner Ties	6
Curved Bricks, White	2	Tie Bars, Straight	4
Windows, Green	8		

MILK BAR No. 2

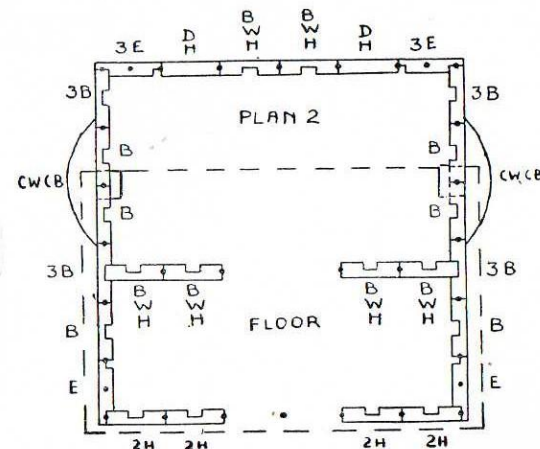
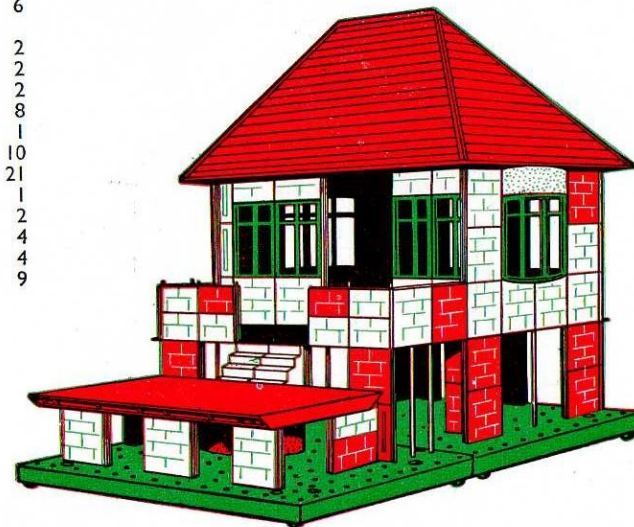


PARTS REQUIRED

Bases	2	Windows, Green	6
Small Roof	1	Curved Windows,		
Flat Roof	1	Green	2
End Bricks, Red	4	Doors, Green	2
End Bricks, White			8	Steps	2
Bricks, Red	24	No. 1 Brick Rods	8
Bricks, White	21	No. 2 Brick Rod	1
Half Bricks, Red	2	No. 3 Brick Rods	10
Half Bricks, White			18	No. 5 Brick Rods	21
Curved Bricks, Red			2	Floor, 13 x 9 Hole	2
Curved Bricks, White			2	Base Links	1
Long Bricks, Red			2	Screws	4
Long Bricks, White			2	Corner Ties	4
				Tie Bars, Straight	9



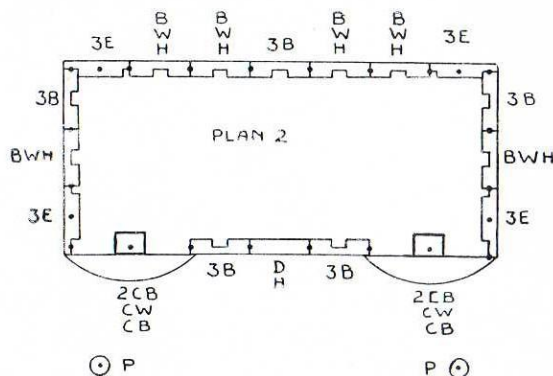
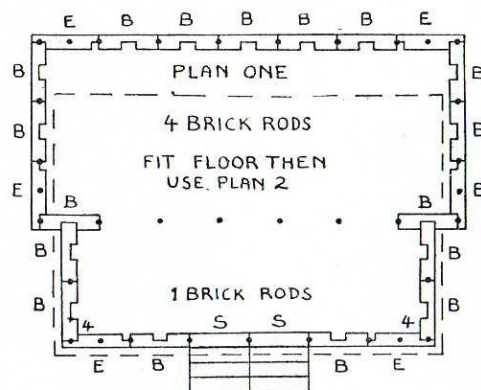
YACHT CLUB BOAT HOUSE No. 2



COLONIAL BUNGALOW No. 2



PARTS REQUIRED

[illegible]

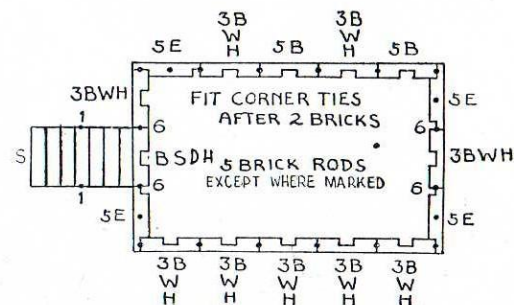
ABBREVIATIONS USED ON ALL BAYKO PLANS

B Brick	H Half Brick
BWC Bay Window Cover	LB Long Brick
CB Curved Brick	LW Large Window
CW Curved Window	P Pillar
D Door	W Window
E End Brick	

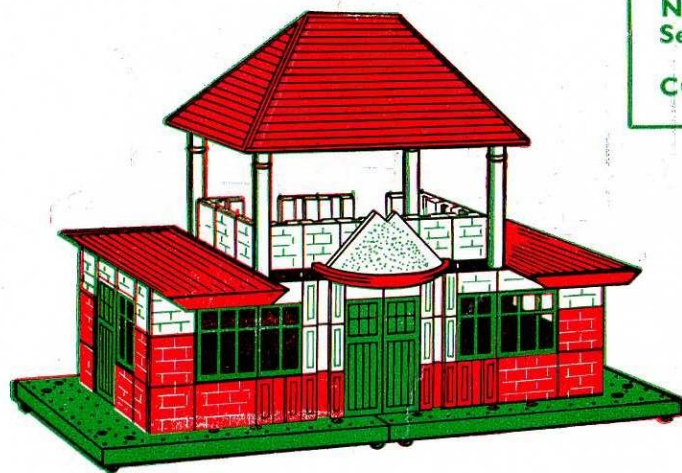
PARTS REQUIRED

Base	1	Door, Green	1
Flat Roofs	2	Windows, Green	9
Roof Ends	2	Steps	2
End Bricks, Red	8	No. 1 Brick Rods	2
End Bricks, White	12	No. 5 Brick Rods	16
Bricks, Red	23	No. 6 Brick Rods	4
Bricks, White	15	Corner Ties	8
Half Bricks, White	10	Tie Bars, Straight	7

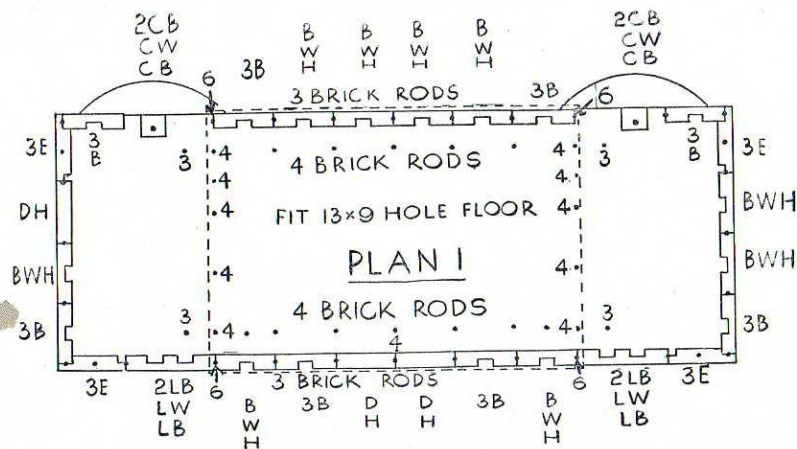
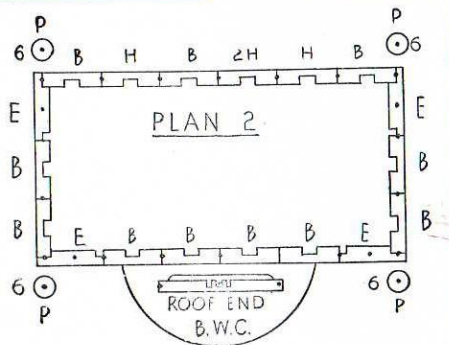
SIGNAL BOX No. 2



PROMENADE CAFE No. 2



You can make your
No. 2 Set into a No. 3
Set by purchasing a
No. 2x
CONVERTING SET



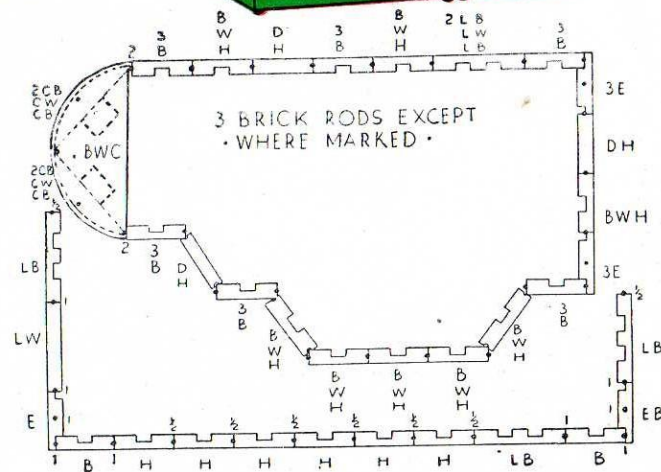
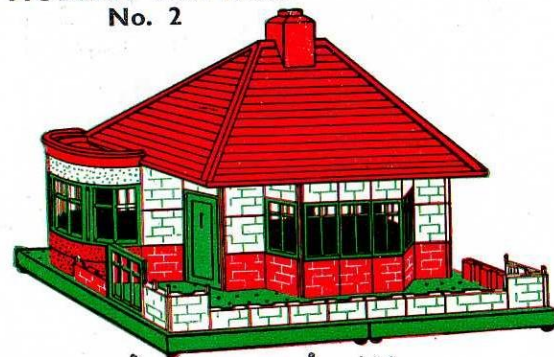
PARTS REQUIRED

Bases	2
Small Roof	2
Flat Roof	2
Roof End	1
End Bricks, Red	8
End Bricks, White	8
Bricks, Red	23
Bricks, White	21
Half Bricks, White	16
Long Bricks, Red	4
Long Bricks, White	2
Curved Bricks, White	2
Curved Bricks, Red	4
Doors, Green	3
Windows, Green	9
Large Windows, Green	2
Curved Windows, Green	2
Bay Window Cover	1
Pillars, White, 3B	4
Floor, 13 x 9 Hole	1
No. 3 Brick Rods	33
No. 4 Brick Rods	23
No. 6 Brick Rods	4
Base Links	2
Screws	4
Corner Ties	4
Tie Bars, Straight	6

PARTS REQUIRED

Long Bricks, White	2	Chimney, Red	1
Curved Bricks, Red	4	No. 1/2 Brick Rods	9
Curved Bricks, White	2	No. 1 Brick Rods	8
Doors, Green	3	No. 2 Brick Rods	2
Windows, Green	8	No. 3 Brick Rods	24
Large Windows, Green	2	Base Links	2
Curved Windows, Green	2	Screws	4
Green	2	Corner Ties	3
Bay Window Cover	1	Tie Bars, Straight	6

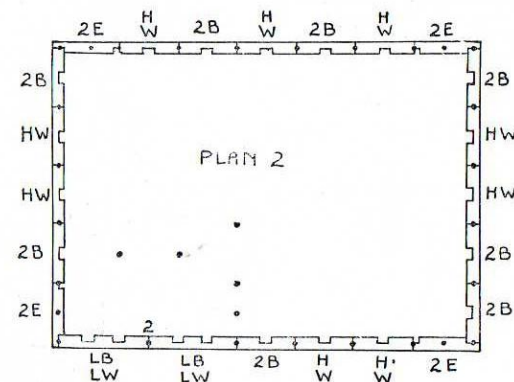
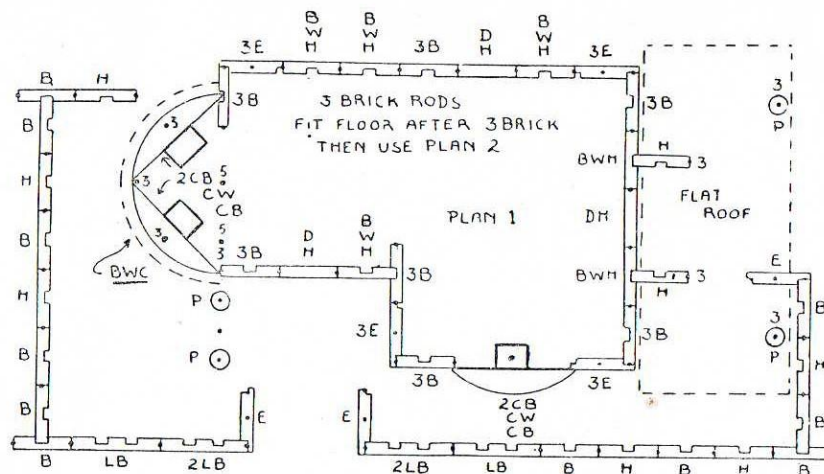
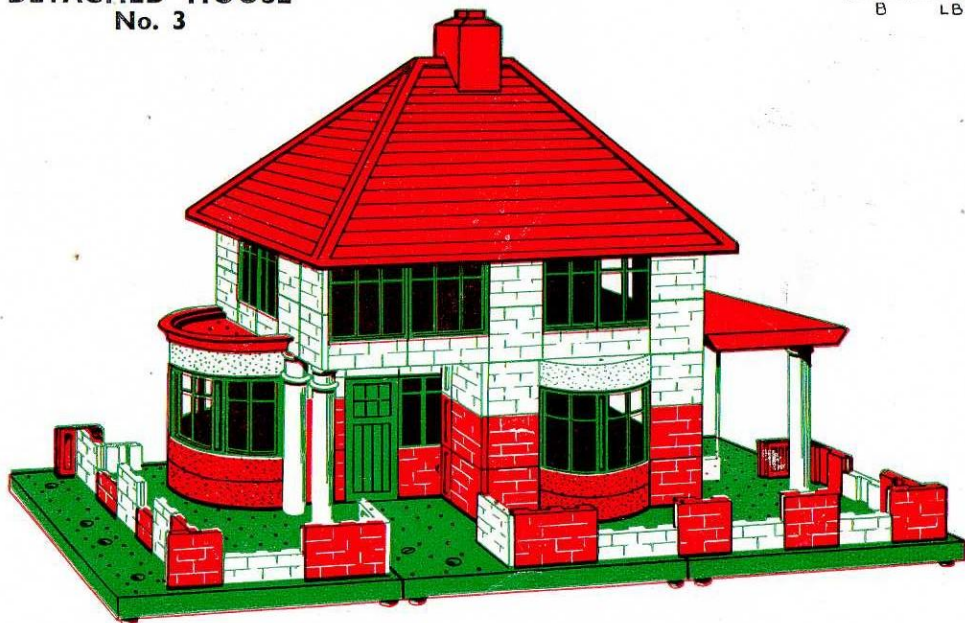
MODERN COTTAGE No. 2



PARTS REQUIRED

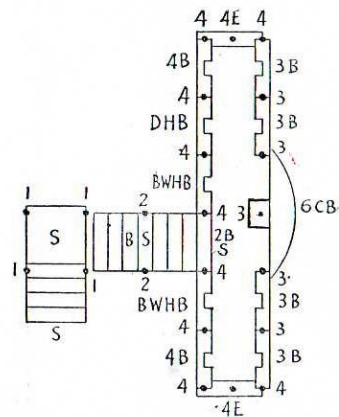
Bases	3	Large Windows, Green	2
Medium Roof	1	Curved Windows, Green	3
Flat Roof	1	Pillars, White, 3B	4
End Bricks, Red	8	Chimney, Red	1
End Bricks, White	15	Bay Window Cover	1
Bricks, Red	28	Floor, 15 x 11 Hole	1
Bricks, White	26	No. $\frac{1}{2}$ Brick Rods	11
Half Bricks, Red	2	No. 1 Brick Rods	18
Half Bricks, White	24	No. 2 Brick Rod	1
Long Bricks, Red	4	No. 3 Brick Rods	8
Long Bricks, White	4	No. 5 Brick Rods	31
Curved Bricks, Red	6	Base Links	4
Curved Bricks, White	3	Screws	8
Doors, Green	3	Corner Ties	4
Windows, Green	15	Tie Bars, Straight	1

MODERN DETACHED HOUSE No. 3

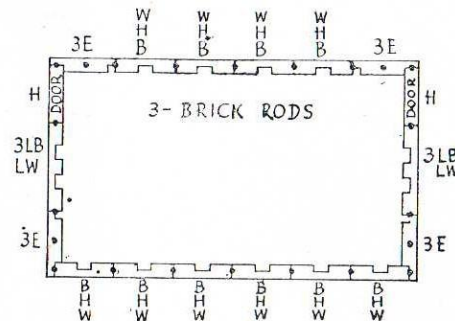


ABBREVIATIONS USED ON ALL BAYKO PLANS

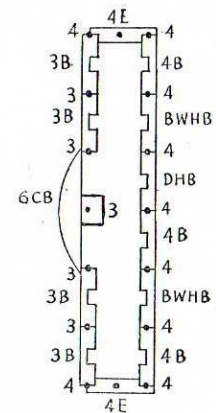
B ... Brick	H ... Half Brick
BWC ... Bay Window Cover	LB ... Long Brick
CB ... Curved Brick	LW ... Large Window
CW ... Curved Window	P ... Pillar
D ... Door	W ... Window
E ... End Brick	



2 P
6 B. ROD.

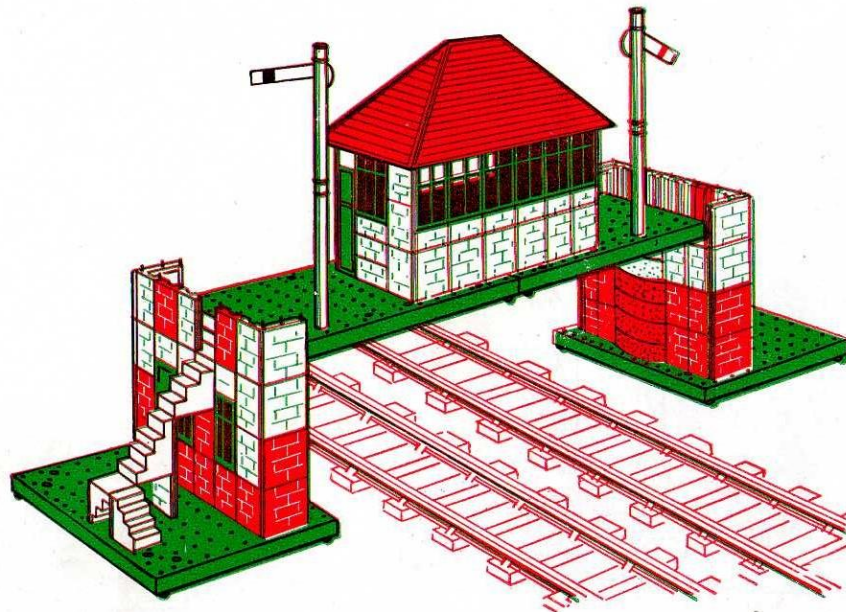


2 P
6 B. ROD.



BRIDGE SIGNAL BOX No. 3

Use Cardboard, cut to
size, for Signal Arms



PARTS REQUIRED

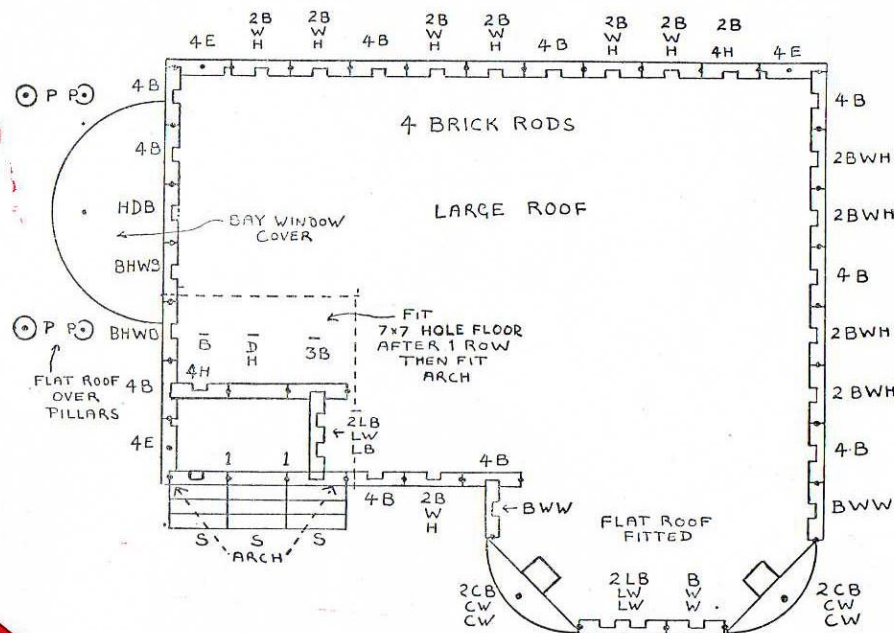
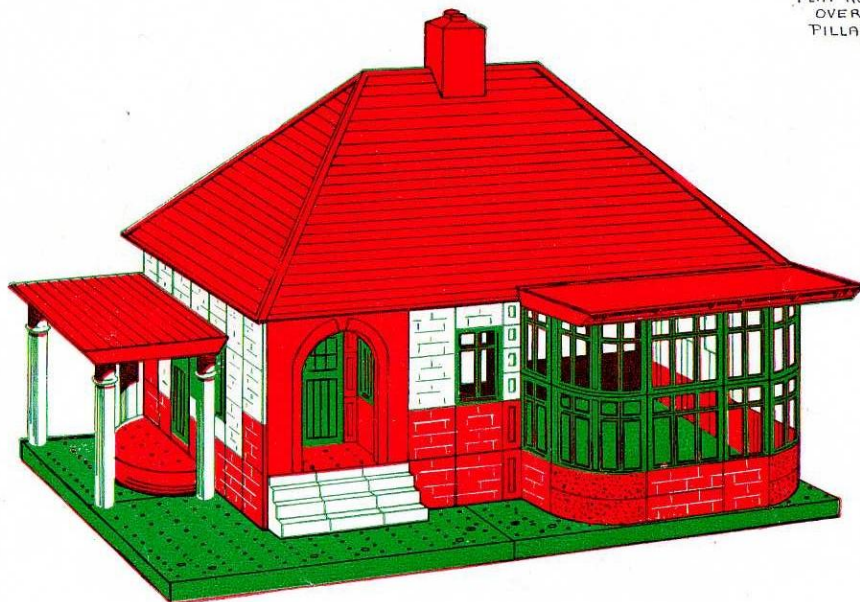
Bases	4
Small Roof	1
End Bricks, Red	8
End Bricks, White	20
Bricks, Red	35
Bricks, White	32
Half Bricks, White	18
Long Bricks, White	6
Curved Bricks, Red	8
Curved Bricks, White	4
Doors, Green	4
Windows, Green	14
Large Windows, Green	2
Pillars, White, 3B	4
Steps	4
No. 1 Brick Rods	4
No. 2 Brick Rods	2
No. 3 Brick Rods	32
No. 4 Brick Rods	22
No. 6 Brick Rods	2
Base Links	2
Screws	4
Corner Ties	8
Tie Bars, Straight	14

ABBREVIATIONS USED ON ALL BAYKO PLANS

B Brick	H Half Brick
BWC Bay Window Cover	LB Long Brick
CB Curved Brick	LW Large Window
CW Curved Window	P Pillar
D Door	W Window
E End Brick	

BESIDES MAKING LARGER MODELS, THIS SET WILL ALSO MAKE AS MANY AS THREE SMALLER MODELS AT ONCE

BUNGALOW WITH SUN LOUNGE No. 3



PARTS REQUIRED

Bases	4	Curved Windows, Green	4
Large Roof	1	Chimney, Red	1
Flat Roofs	2	Arch	1
End Bricks, Red	6	Pillars, White, 3B	4
End Bricks, White	6	Steps	3
Bricks, Red	36	Bay Window Cover	1
Bricks, White	40	No. 1 Brick Rod	1
Half Brick, Red	1	No. 1 Brick Rods	2
Half Bricks, White	22	No. 3 Brick Rods	4
Long Bricks, Red	4	No. 4 Brick Rods	43
Long Brick, White	1	Floor, 7 x 7 Hole	1
Curved Bricks, Red	4	Base Links	6
Doors, Green	2	Screws	12
Windows, Green	19	Corner Ties	5
Large Windows, Green	3	Tie Bars, Straight	16

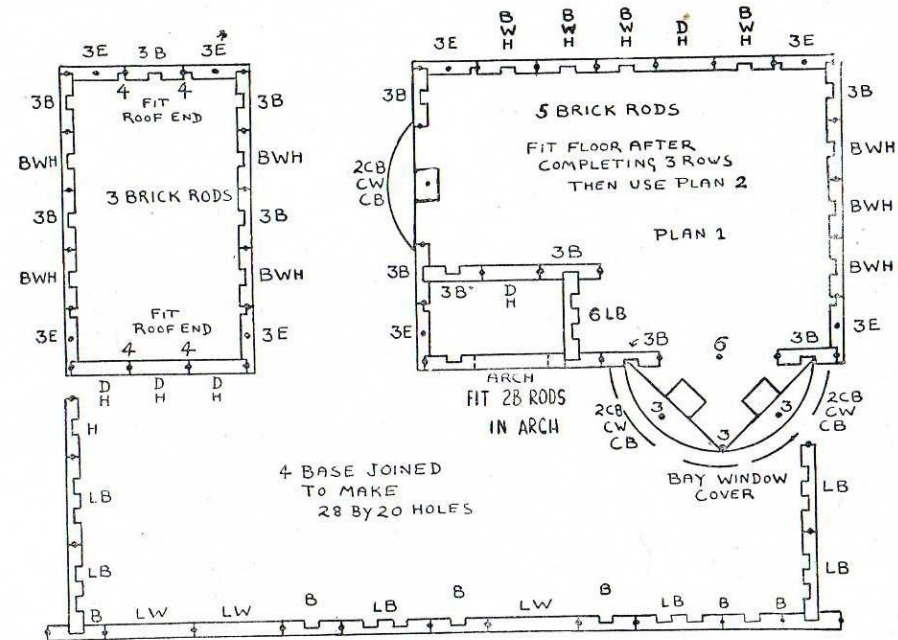
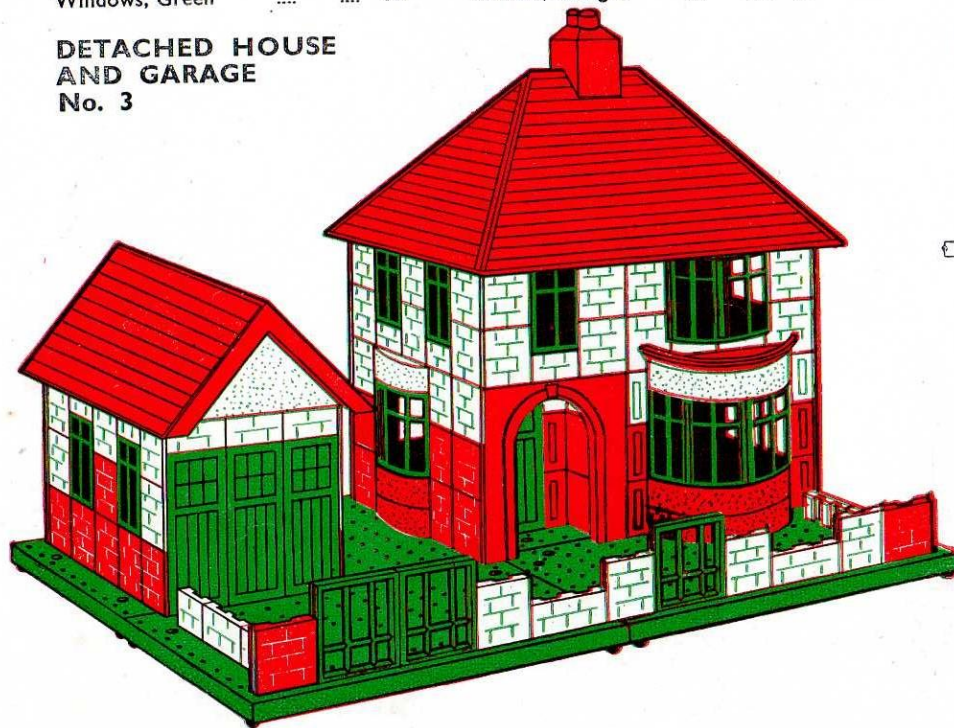
SUGGESTED MODELS BUILT FROM

BAYKO

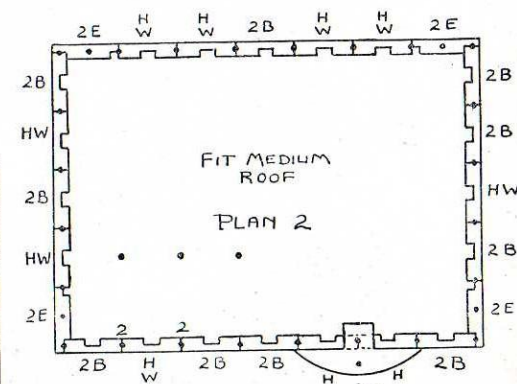
BUILDING SET No. 3

PARTS REQUIRED

Bases	4	Large Windows, Green	3
Medium Roof	1	Curved Windows, Green	4
Flat Roofs	2	Chimney	1
Roof Ends	2	Arch	1
End Bricks, Red	12	Bay Window Cover	1
End Bricks, White	20	Floor, 15 x 11 Hole	1
Bricks, Red	34	No. 1 Brick Rods	7
Bricks, White	39	No. 2 Brick Rods	10
Half Bricks, Red	2	No. 3 Brick Rods	2
Half Bricks, White	25	No. 4 Brick Rods	22
Long Bricks, Red	4	No. 5 Brick Rods	26
Long Bricks, White	8	Base Links	6
Curved Bricks, Red	6	Screws	12
Curved Bricks, White	3	Corner Ties	8
Doors, Green	5	Tie Bars, Straight	15
Windows, Green	19		

DETACHED HOUSE
AND GARAGE
No. 3ABBREVIATIONS USED
ON ALL BAYKO PLANS

B	Brick
BWC	Bay Window Cover
CB	Curved Brick
CW	Curved Window
D	Door
E	End Brick
H	Half Brick
LB	Long Brick
LW	Large Window
P	Pillar
W	Window



SUGGESTED MODELS BUILT FROM

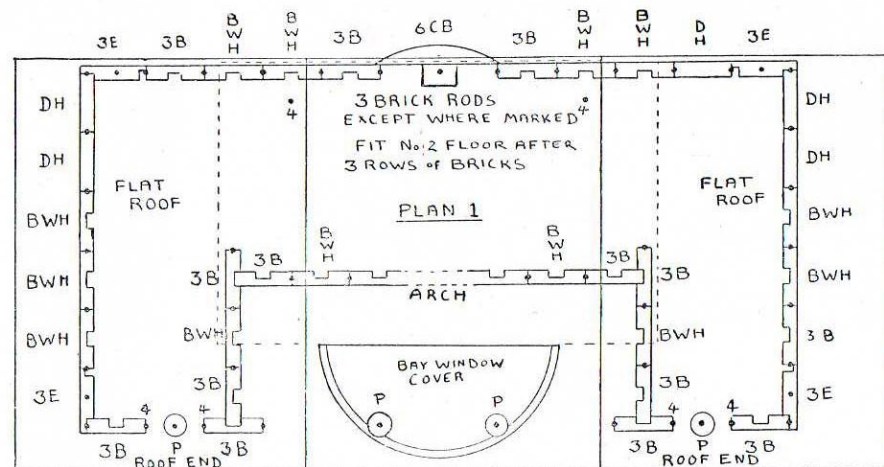
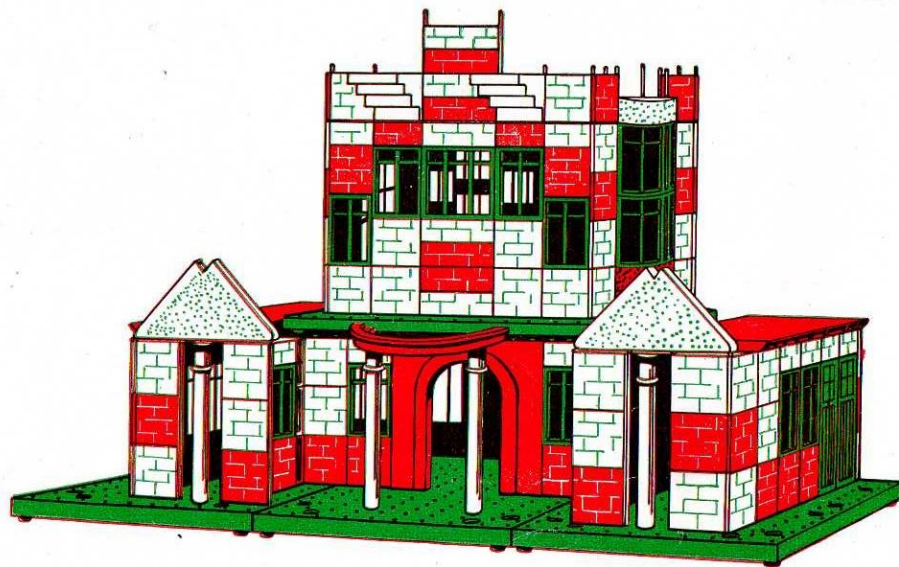
BAYKO

BUILDING SET No. 3

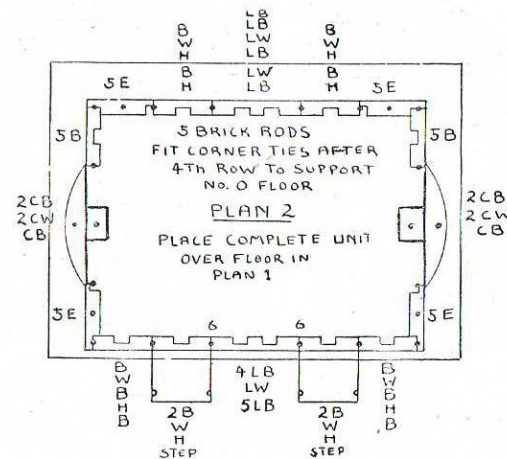
PARTS REQUIRED

Bases	4	Curved Windows, Green	4
Flat Roofs	2	Bay Window Cover	1
Roof Ends	2	Pillars, White, 3B	4
End Bricks, Red	12	Steps	2
End Bricks, White	20	Arch	1
Bricks, Red	39	Floor, 11 x 7 Hole	1
Bricks, White	40	Floor, 15 x 11 Hole	1
Half Bricks, Red	2	No. 3 Brick Rods	45
Half Bricks, White	24	No. 4 Brick Rods	6
Long Bricks, Red	5	No. 5 Brick Rods	20
Long Bricks, White	8	No. 6 Brick Rods	2
Curved Bricks, Red	8	Base Links	4
Curved Bricks, White	4	Screws	8
Doors, Green	5	Corner Ties	10
Windows, Green	19	Tie Bars, Straight	12
Large Windows, Green	3		

PIER PAVILION No. 3



3 BASES JOINED



SUGGESTED MODELS BUILT FROM

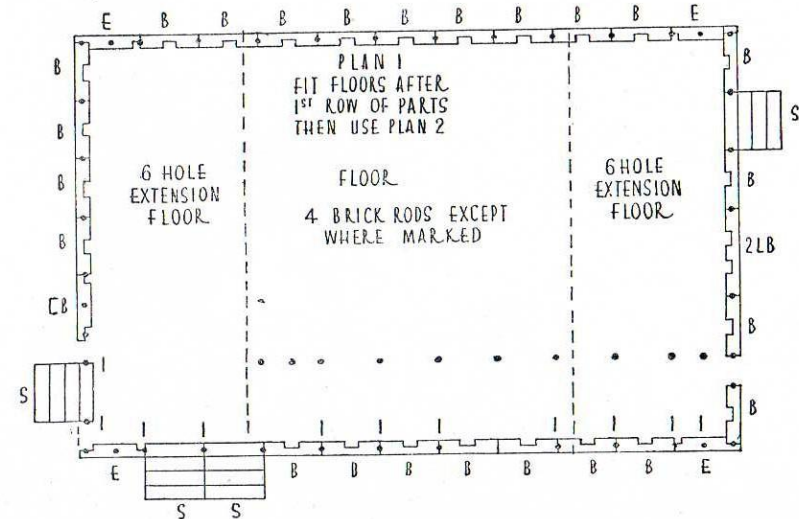
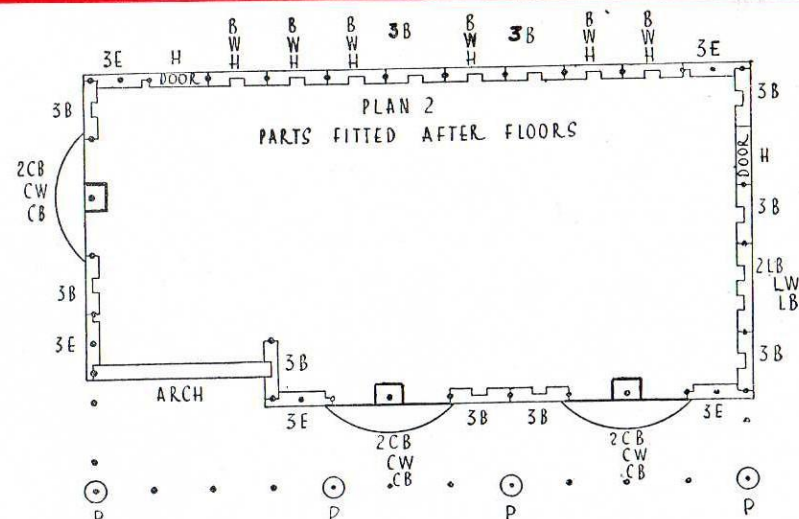
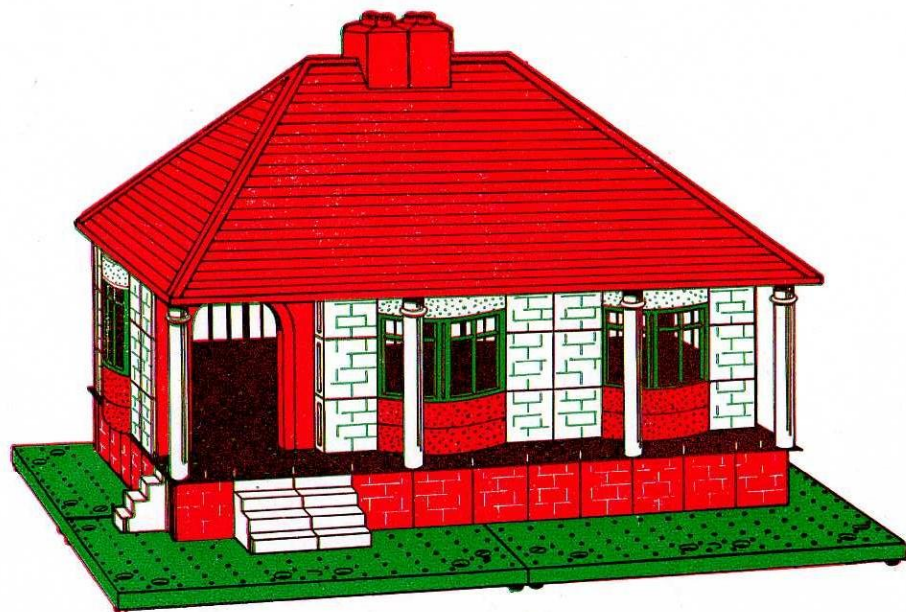
BAYKO

BUILDING SET No. 3

PARTS REQUIRED

Bases	4	Curved Windows, Green	3
Large Roof	1	Pillars, White, 3B	4
End Bricks, Red	5	Chimney, Red	1
End Bricks, White	15	Steps	4
Bricks, Red	24	Arch	1
Bricks, White	36	Floor, 15 x 11 Hole	1
Half Bricks, White	8	Floors, 15 x 6 Hole	2
Long Bricks, Red	2	No. 1 Brick Rods	13
Long Bricks, White	3	No. 4 Brick Rods	40
Curved Bricks, Red	6	Base Links	6
Curved Bricks, White	3	Screws	12
Doors, Green	2	Corner Ties	4
Windows, Green	6	Tie Bars, Straight	12
Large Window, Green	1			

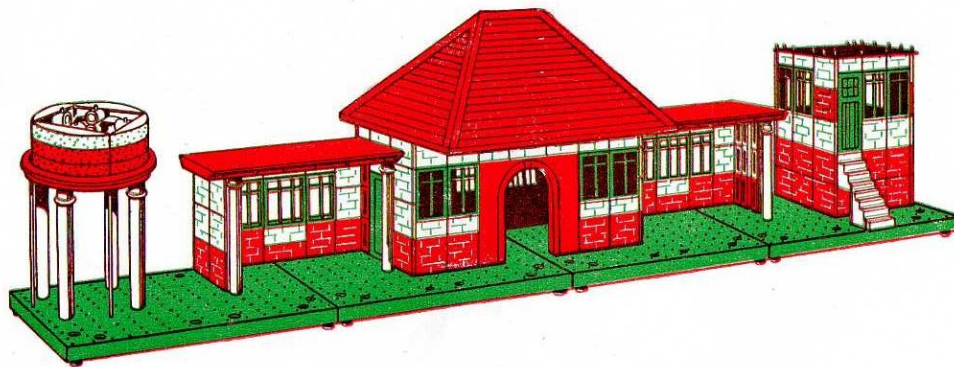
LARGE BUNGALOW WITH VERANDAH No. 3



ABBREVIATIONS USED ON ALL BAYKO PLANS

B Brick	CW Curved Window	LB Long Brick
BVC Bay Window Cover	D Door	LW Large Window
CB Curved Brick	E End Brick	P Pillar
		H Half Brick	W Window

RAILWAY STATION No. 3

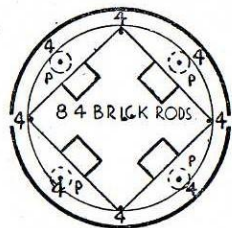


MANY OTHER MODELS, SUITABLE FOR USE WITH MODEL RAILWAYS, CAN BE MADE

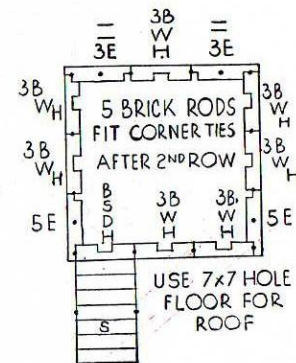
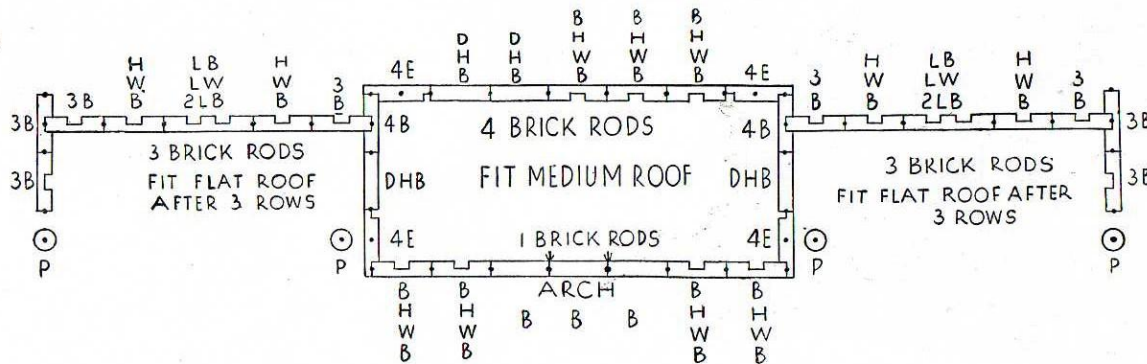
PARTS REQUIRED

Bases	4
Medium Roof	1
Flat Roofs	2
End Bricks, Red	12
End Bricks, White	20
Bricks, Red	39
Bricks, White	40
Half Bricks, White	23
Long Bricks, Red	2
Long Bricks, White	4
Curved Bricks, Red	8
Curved Bricks, White	4
Doors, Green	5
Windows, Green	18
Large Windows, Green	2
Pillars, White, 3B	8
Steps	2
Bay Window Covers	2
Floor, 7 x 7 Hole	1
No. 1 Brick Rods	8
No. 3 Brick Rods	18
No. 4 Brick Rods	30
No. 5 Brick Rods	16
Base Links	6
Screws	12
Corner Ties	8
Tie Bars, Straight	16

USE ONE BRICK RODS
TO LOCK CURVED BRICKS



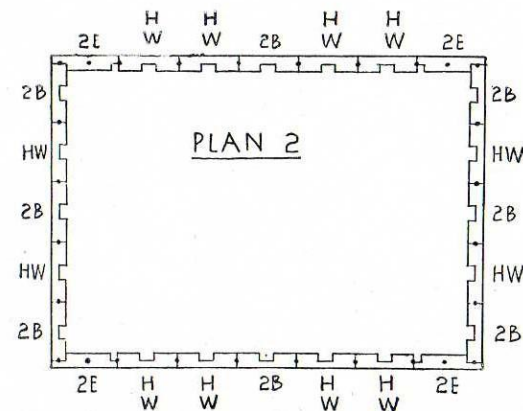
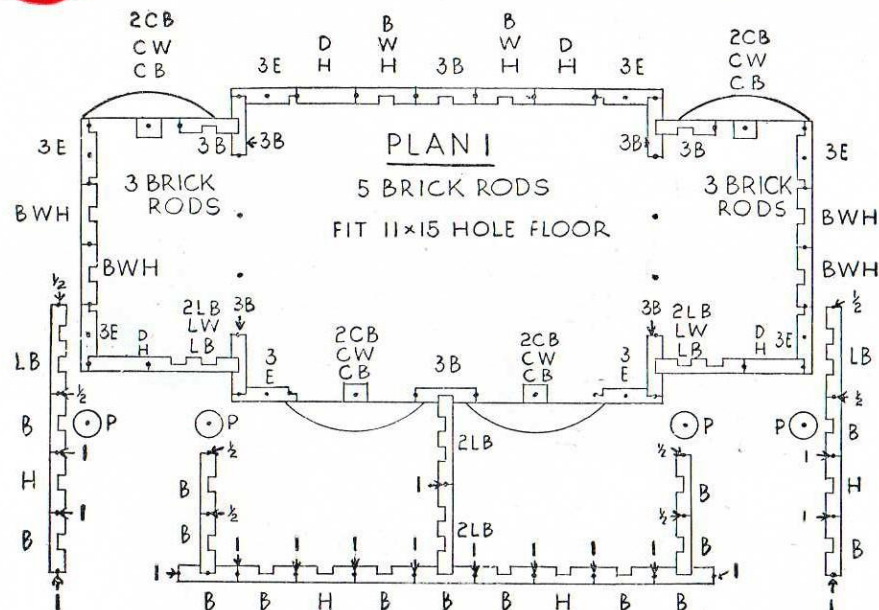
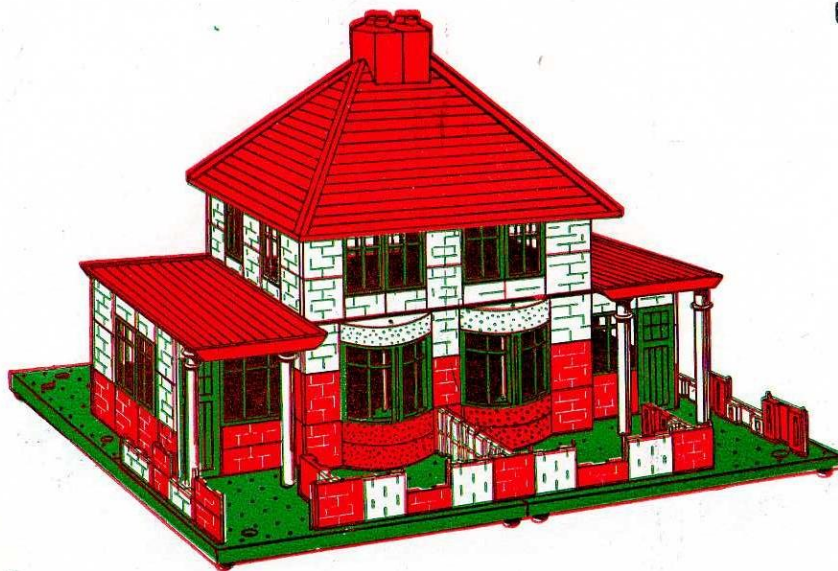
4 PILLARS
2 BWC
12CB



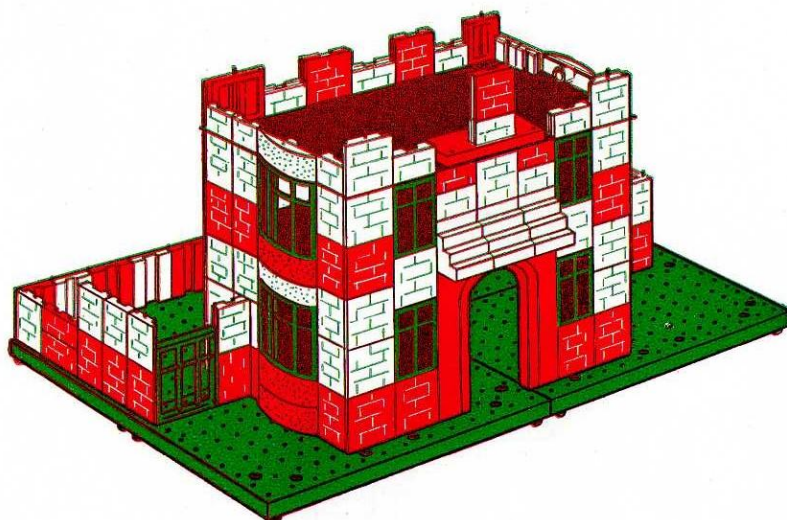
PARTS REQUIRED

Bases	4	Windows, Green	18
Medium Roof	1	Large Windows, Green	2
Flat Roofs	2	Curved Windows, Green	4
End Bricks, Red	12	Pillars, White, 3B	4
End Bricks, White	20	Chimneys, Red	2
Bricks, Red	31	Floor, 15 x 11 Hole	1
Bricks, White	30	No. $\frac{1}{2}$ Brick Rods	7
Half Bricks, Red	2	No. 1 Brick Rods	18
Half Bricks, White	24	No. 3 Brick Rods	24
Long Bricks, Red	4	No. 5 Brick Rods	28
Long Bricks, White	8	Base Links	6
Curved Bricks, Red	8	Screws	12
Curved Bricks, White	4	Corner Ties	8
Doors, Green	4	Tie Bars, Straight	16

SEMI-DETACHED HOUSES No. 3



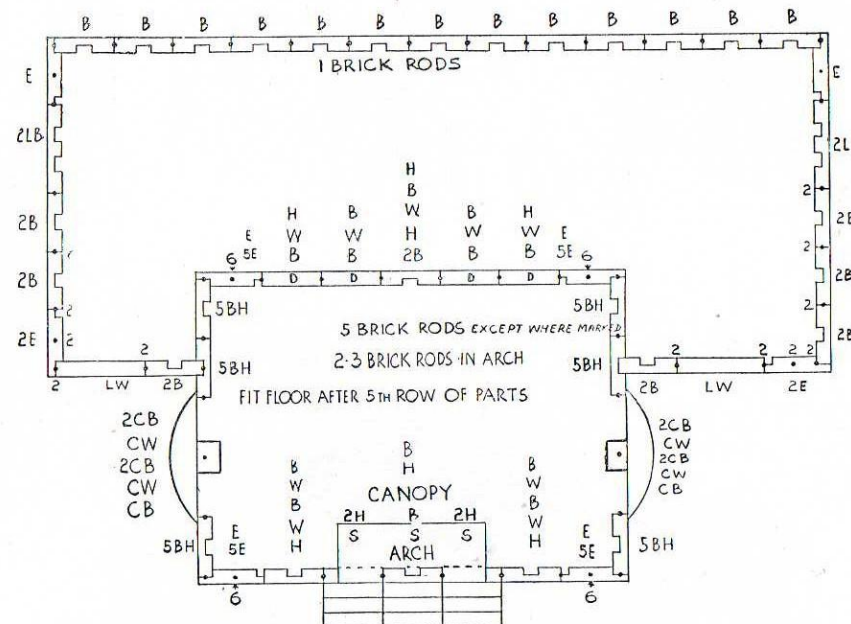
ROAD HOUSE No. 3



PARTS REQUIRED

Bases	4	Curved Windows, Green	4
End Bricks, Red	12	Canopy, Red	1
End Bricks, White	18	Steps	3
Bricks, Red	32	Arch	1
Bricks, White	40	No. 1 Brick Rod	1
Half Bricks, Red	2	No. 1 Brick Rods	18
Half Bricks, White	15	No. 2 Brick Rods	12
Long Bricks, Red	4	No. 3 Brick Rods	2
Curved Bricks, Red	6	No. 5 Brick Rods	22
Curved Bricks, White	4	No. 6 Brick Rods	4
Doors, Green	4	Floor, 15 x 11 Hole	1
Windows, Green	9	Base Links	6
Large Windows, Green	2	Screws	12

**SPARE PARTS CAN BE PURCHASED
ONLY THROUGH YOUR LOCAL
BAYKO DEALER**

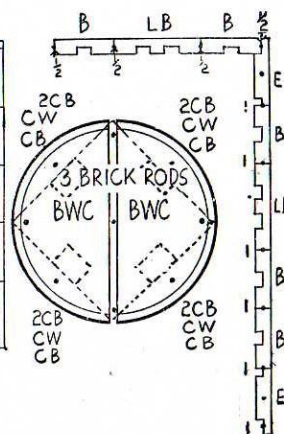
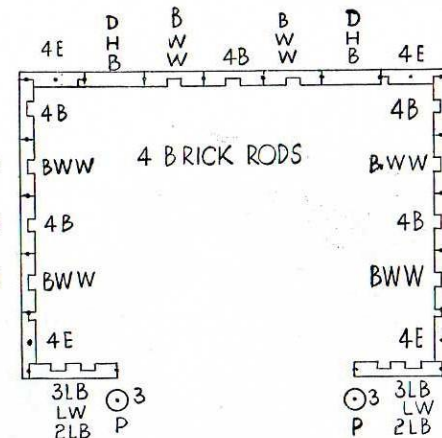
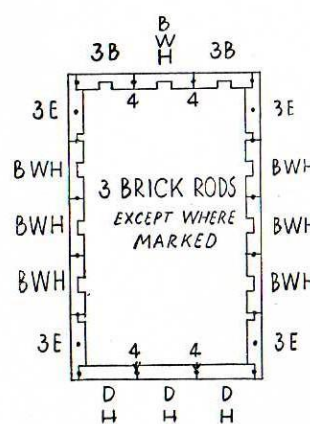


ABBREVIATIONS USED ON ALL BAYKO PLANS

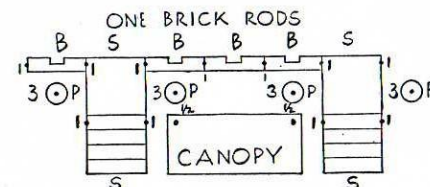
B Brick	H Half Brick
BWC Bay Window Cover	LB Long Brick
CB Curved Brick	LW Large Window
CW Curved Window	P Pillar
D Door	W Window
E End Brick	

PARTS REQUIRED

Bases	4	Windows, Green	19
Medium Roof	1	Large Windows, Green	2
Flat Roofs	2	Curved Windows, Green	4
Roof Ends	2	Bay Window Covers	2
End Bricks, Red	12	Pillars, White, 3B	6
End Bricks, White	18	Canopy, Red	1
Bricks, Red	28	Steps	4
Bricks, White	22	No. 1 Brick Rods	7
Half Bricks, Red	2	No. 1 Brick Rods	18
Half Bricks, White	10	No. 3 Brick Rods	30
Long Bricks, Red	5	No. 4 Brick Rods	28
Long Bricks, White	7	Base Links	6
Curved Bricks, Red	8	Screws	12
Curved Bricks, White	4	Corner Ties	8
Doors, Green	5	Tie Bars, Straight	11



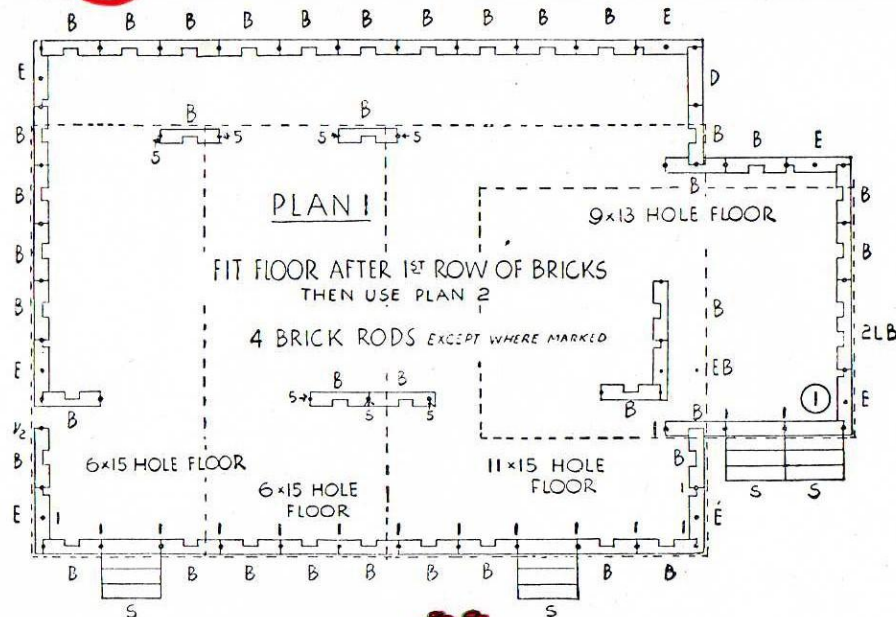
FILLING STATION No. 3



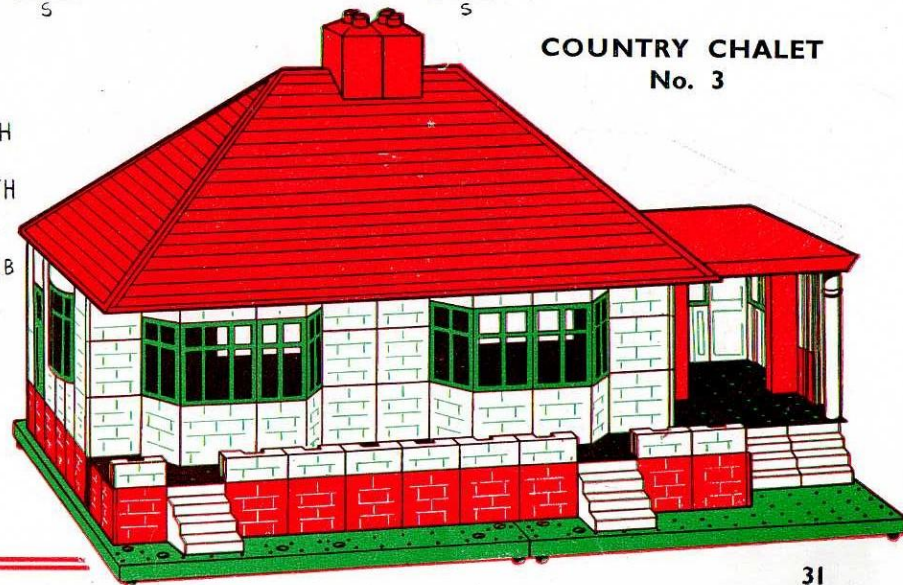
ABBREVIATIONS USED ON ALL BAYKO PLANS

B	Brick	H	Half Brick
BWC	Bay Window Cover	LB	Long Brick
CB	Curved Brick	LW	Large Window
CW	Curved Window	P	Pillar
D	Door	W	Window
E	End Brick		

Bases	4	Pillar, White, 3B	1
Large Roof	1	Chimneys, Red	2
Flat Roof	1	Steps	4
End Bricks, Red	7	Arch	1
End Bricks, White	15	Floors, 15 x 6 Hole	2
Bricks, Red	37	Floor, 15 x 11 Hole	1
Bricks, White	40	Floor, 13 x 9 Hole	1
Half Bricks, White	25	No. $\frac{3}{4}$ Brick Rods	2
Long Bricks, Red	4	No. 1 Brick Rods	18
Long Bricks, White	7	No. 4 Brick Rods	43
Curved Bricks, Red	6	No. 5 Brick Rods	7
Curved Bricks, White	4	Base Links	6
Doors, Green	2	Screws	12
Windows, Green	14	Corner Ties	7
Large Window, Green	1	Tie Bars, Straight	12
Curved Windows, Green	4		



COUNTRY CHALET
No. 3



PARTS REQUIRED

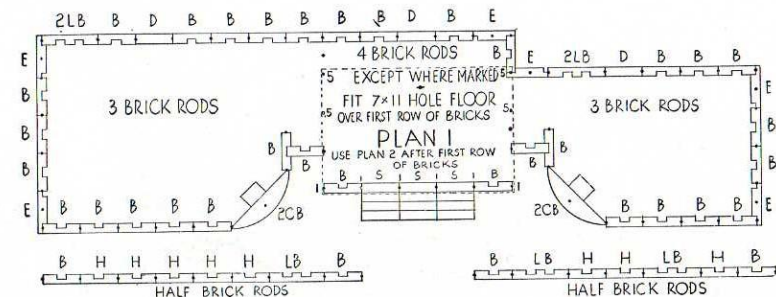
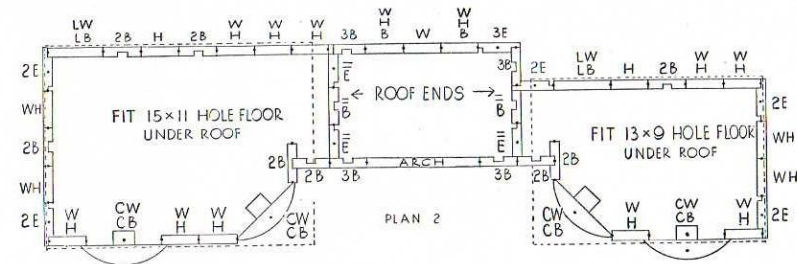
Bases	4	Large Windows, Green	2
Medium Roof	1	Curved Windows, Green	4
Small Roof	1	Steps	3
Flat Roofs	2	Arch	1
Roof Ends	2	Floor, 11 x 7 Hole	1
End Bricks, Red	6	Floor, 13 x 9 Hole	1
End Bricks, White	16	Floor, 15 x 11 Hole	1
Bricks, Red	35	No. 1 Brick Rods	17
Bricks, White	34	No. 1 Brick Rods	6
Half Bricks, Red	2	No. 3 Brick Rods	42
Half Bricks, White	24	No. 4 Brick Rods	14
Long Bricks, Red	3	No. 5 Brick Rods	4
Long Bricks, White	6	Base Links	6
Curved Bricks, Red	4	Screws	12
Curved Bricks, White	4	Corner Ties	5
Doors, Green	3	Tie Bars, Straight	10
Windows, Green	17		

Remember !

3X CONVERTING SET IS NOW AVAILABLE, THIS CONTAINS MANY OF THE NEW PARTS LISTED AND ILLUSTRATED ON THE FOLLOWING PAGES

Reference Plan 2—Please note that the inside walls on which the roof ends are placed are not built up from the base, the bricks and end bricks are at the top only, supported by means of tie bars.

COUNTRY CLUB No. 3



Illustrated on this and the following page are many parts not contained in our Standard Sets 0 to 3.

We show also a number of attractive Models of different design each using some of the new parts.

By the examples shown it is easy to see that the scope of Model Building is tremendous. Try your hand at making new designs using the parts in your outfit together with these new parts.

The list below gives full details of these parts, all of which can be purchased from your Dealer. **ASK ABOUT THEM NOW.**

List of "BAYKO" New Parts with Reference Numbers

NOT CONTAINED IN STANDARD SETS Nos. 0, 1, 2 & 3

Ref. No.	Part	Colour Available
* 31	GABLE ROOF	Red
* 15M	PILLARS, 2 BRICK	White
* 32	ROOF END, LONG	White
* 33	BALUSTRADES	White
* 34	WALL BRICKS	White
* 35	CORNER BRICKS	White & Red
* 36	SPAN	White
17	PINNACLE ROOF	White & Red
18	PINNACLE PLATFORM	White & Red
21	CURVED TURRETS, CORNER	Red
22	SQUARE TURRETS, CORNER	Red
23	STRAIGHT TURRET, LONG	Red
23S	STRAIGHT TURRET, SHORT	Red
20	DOMES	White & Red
* 37S	CRAZY PAVING	Grey
* 38L	SIDE WINDOW, LEFT	Green
* 38R	SIDE WINDOW, RIGHT	Green
* 39	SIDE BRICKS	White & Red
* 40	OPENING WINDOWS	Green
* 41	SMALL CHIMNEY	Red
* 42	GATE AND MATCHING BALUSTRADES (Complete)	White
	No. 4 INSTRUCTION BOOKLET	

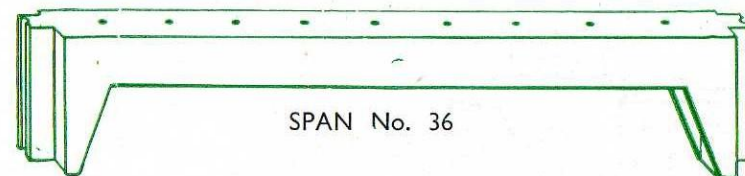
*Parts marked thus, are now contained in sizes 3X and 4

**WHEN ORDERING SPARE PARTS STATE COLOUR
REQUIRED AND REFERENCE NUMBER.**

NEW PARTS (Actual Size).



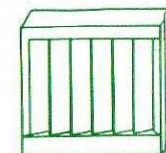
PILLAR
2 BRICK
No. 15 M



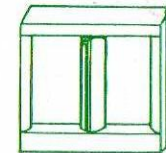
SPAN No. 36



CORNER
BRICK
No. 35



WALL BRICK
No. 34



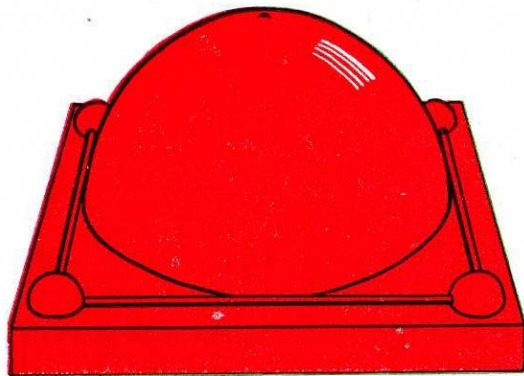
BALUSTRADE
No. 33

(ACTUAL SIZE)

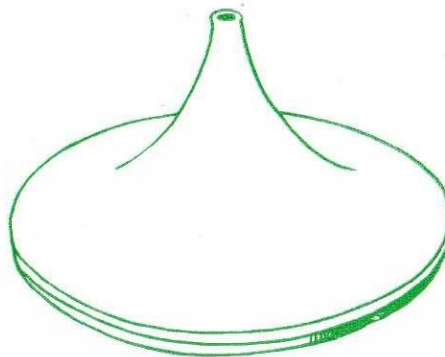
NEW

BAYKO

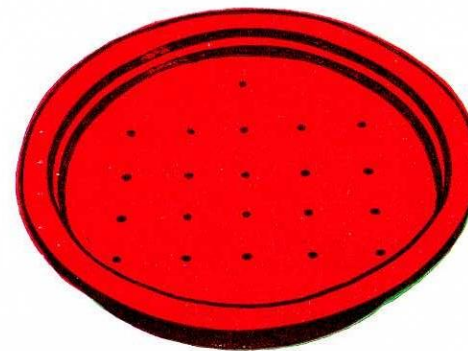
PARTS



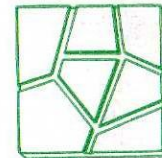
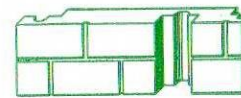
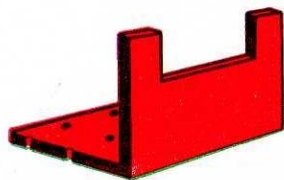
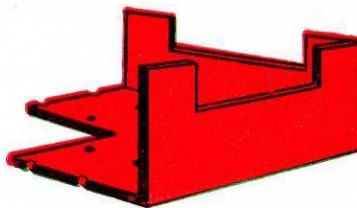
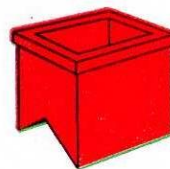
DOME No. 20



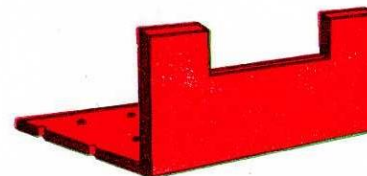
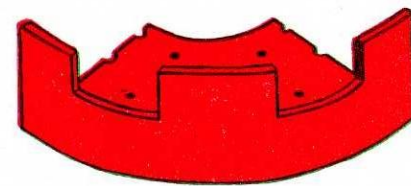
PINNACLE ROOF No. 17



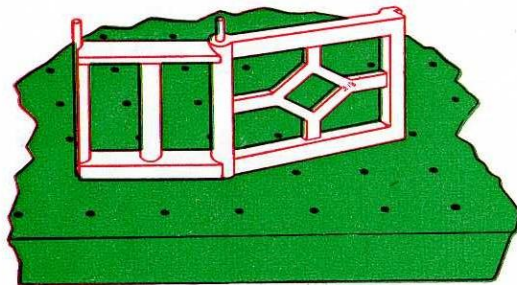
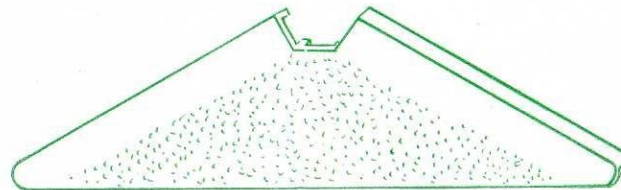
PINNACLE PLATFORM No. 18

CRAZY PAVING
No. 37SSIDE BRICK
No. 39SHORT TURRET
No. 23SSQUARE TURRET
No. 22SMALL CHIMNEY
No. 41

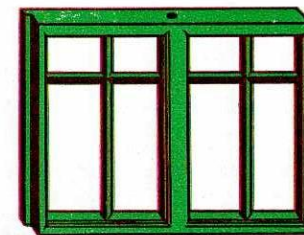
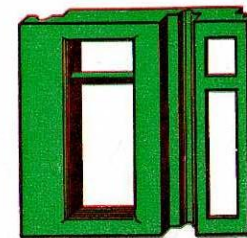
To match angle formed by Roof End (Long) No. 32

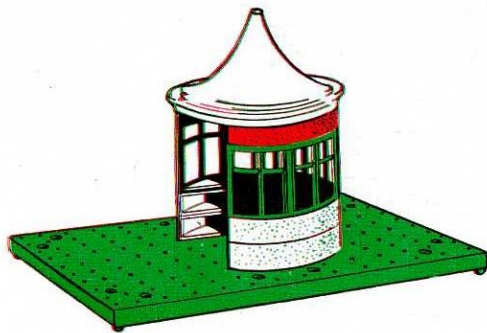
LONG TURRET
No. 23

CURVED TURRET No. 21

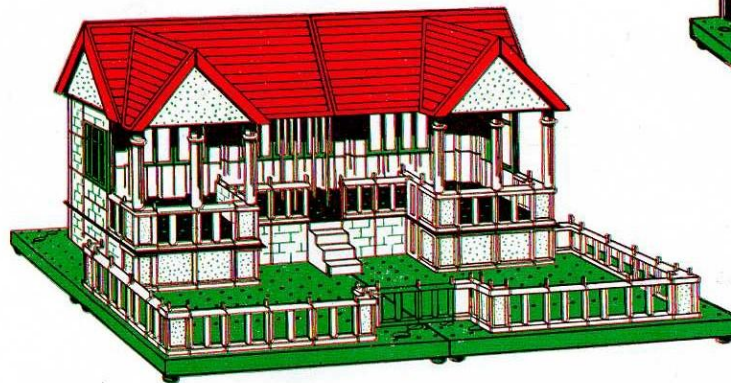
GATE AND MATCHING
BALUSTRADE No. 42

ROOF END (LONG) No. 32

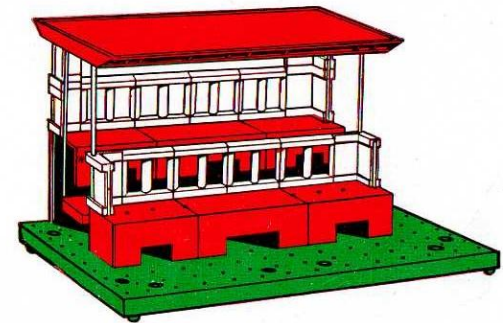
OPENING WINDOW
No. 40SIDE WINDOW
38R



SUMMER HOUSE



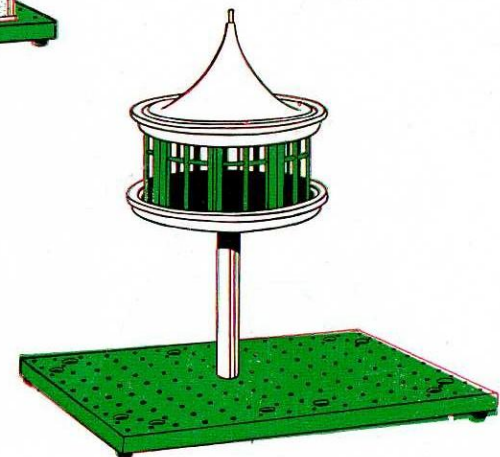
SPORTS PAVILION



GRANDSTAND



PARK LODGE

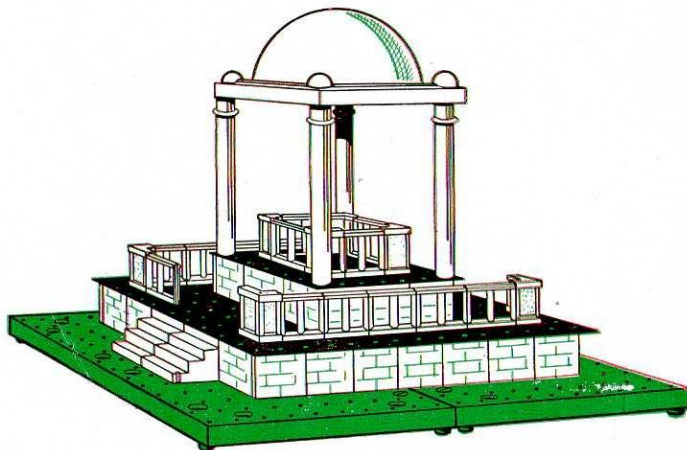


BIRD HOUSE

MODELS ILLUSTRATING THE VARIOUS USES OF NEW

BAYKO

PARTS



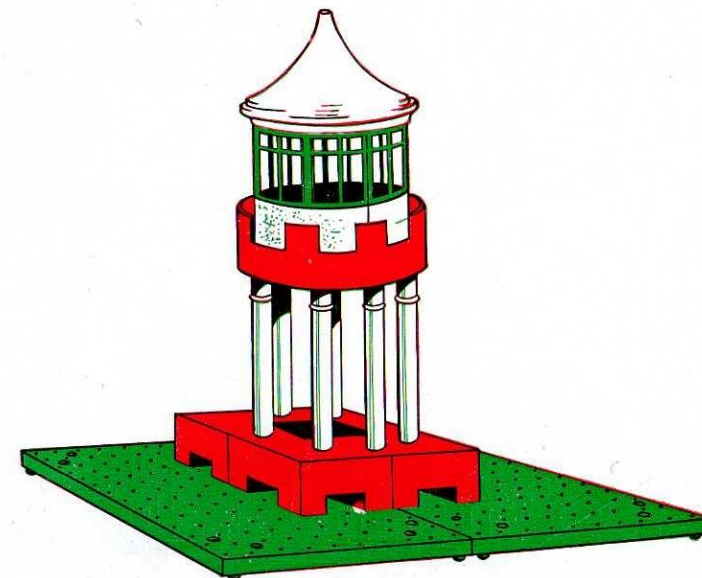
MOSQUE



NOAH'S ARK



RAILWAY GOODS STATION

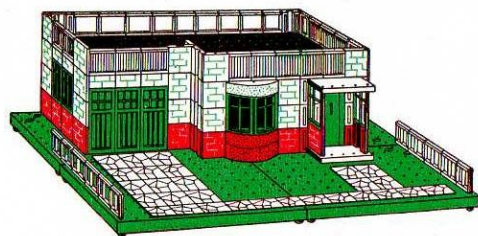


AIRPORT BEACON

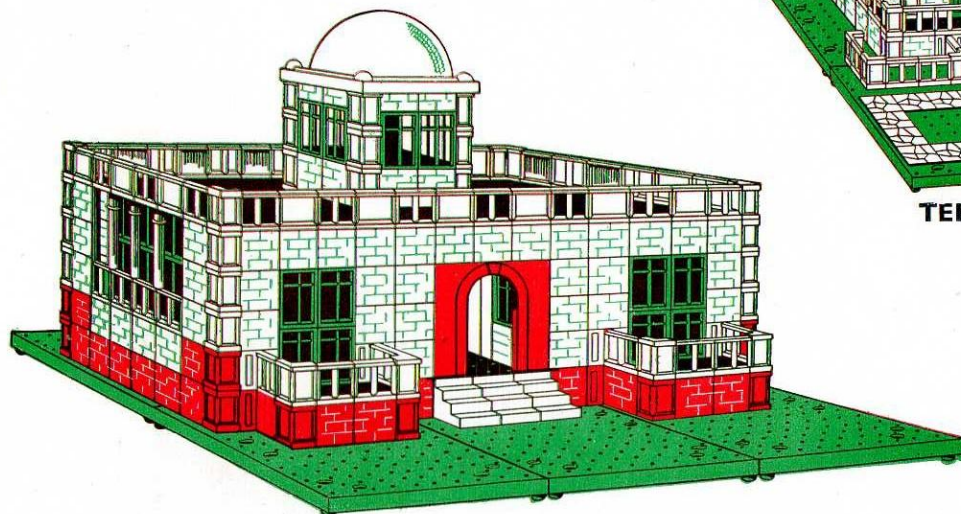
MODELS ILLUSTRATING THE VARIOUS USES OF NEW

BAYKO

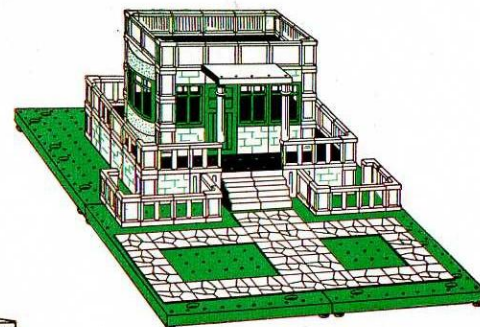
PARTS



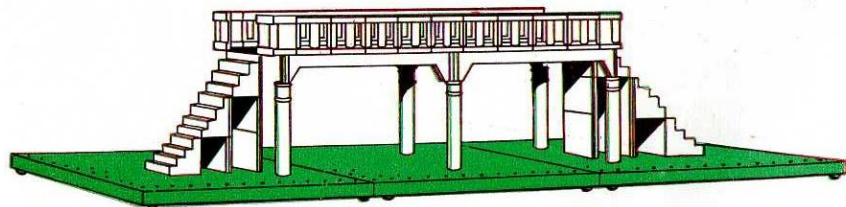
**HOUSE WITH
SUNSHINE ROOF**



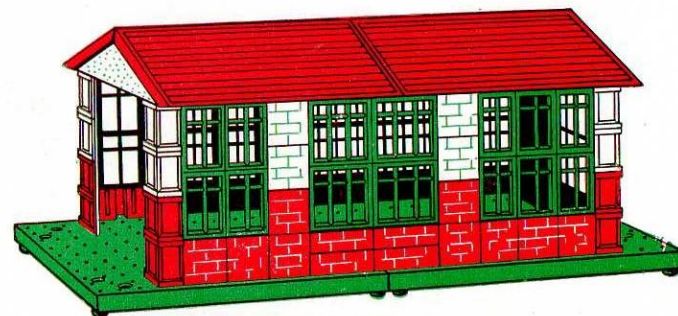
TOWN HALL



TERRACE HOUSE



FOOT BRIDGE

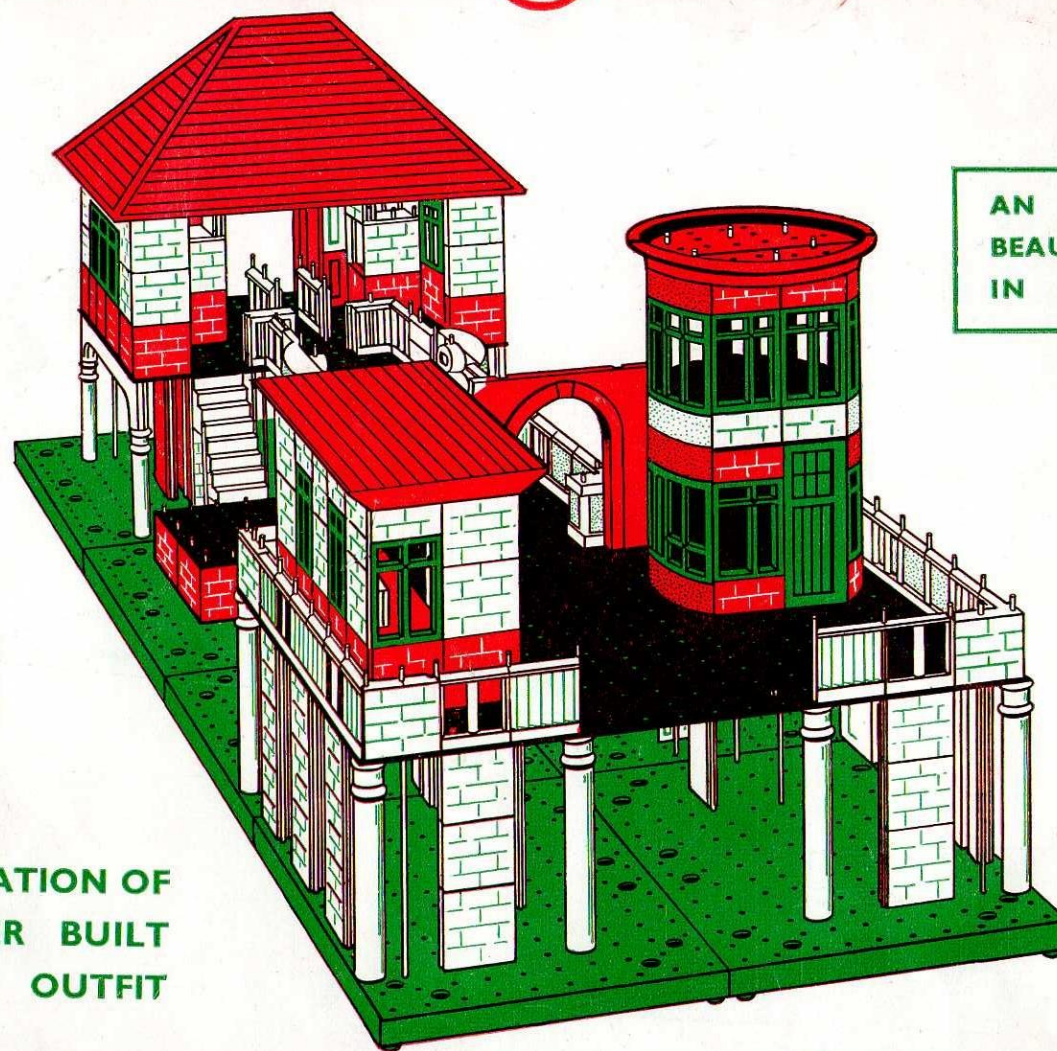


ENGINE SHED

'PERFECT' CHILD'S PLAY

BAYKO

BUILDING SETS



AN INSTRUCTIVE TOY
BEAUTIFULLY FINISHED
IN MOULDED PLASTICS

AN ILLUSTRATION OF
SEASIDE PIER BUILT
FROM No. 4 OUTFIT

★ A "BAYKO" BUILDING SET IS THE IDEAL GIFT FOR ANY BOY OR GIRL ★

Manufactured by PLIMPTON ENGINEERING COMPANY, LIMITED, LIVERPOOL 1, ENGLAND