

320 - KETTLE STAND

321 - TOAST RACK

322 - FLAT IRON STAND

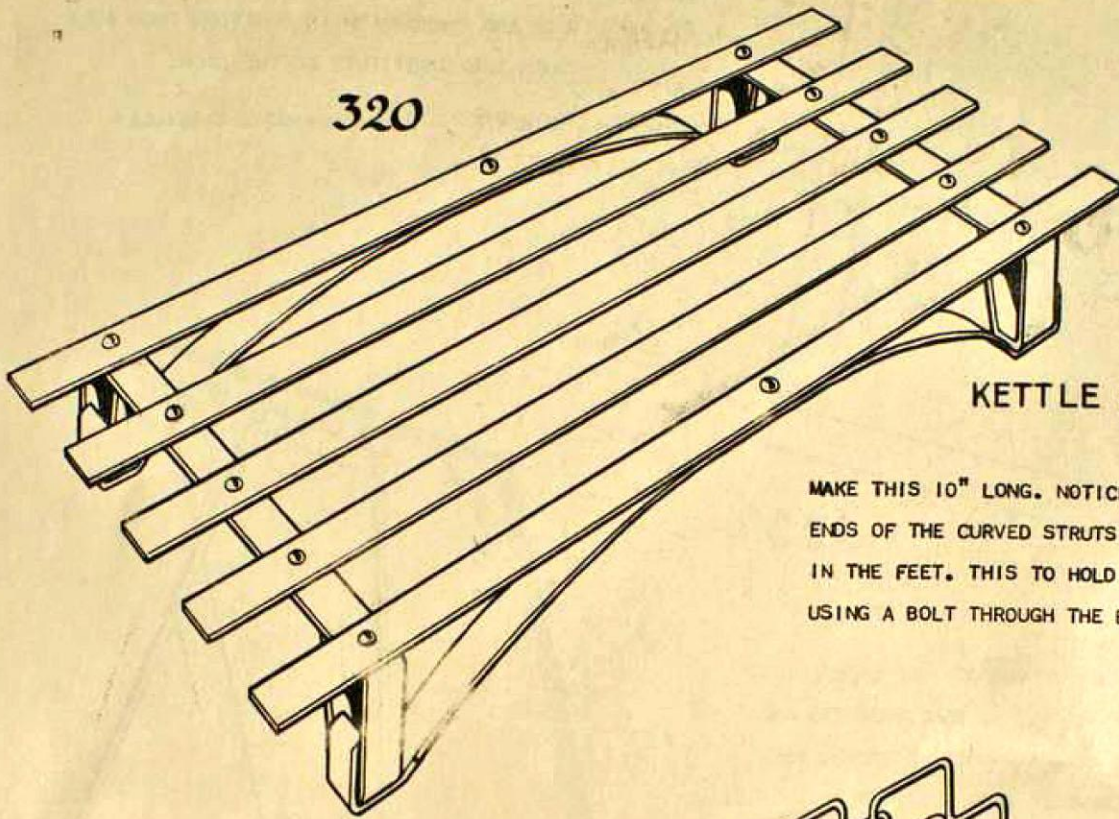
323 - PHOTO FRAME

324 - NUMERALS

PRICE
2^d

JUNEERO DESIGN SHEET N°54

320

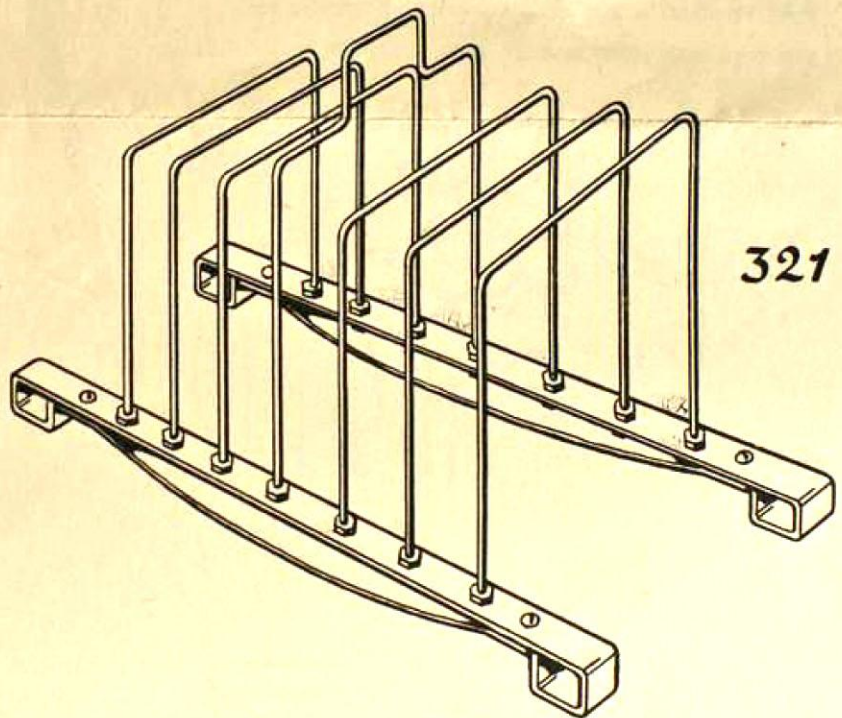


KETTLE STAND

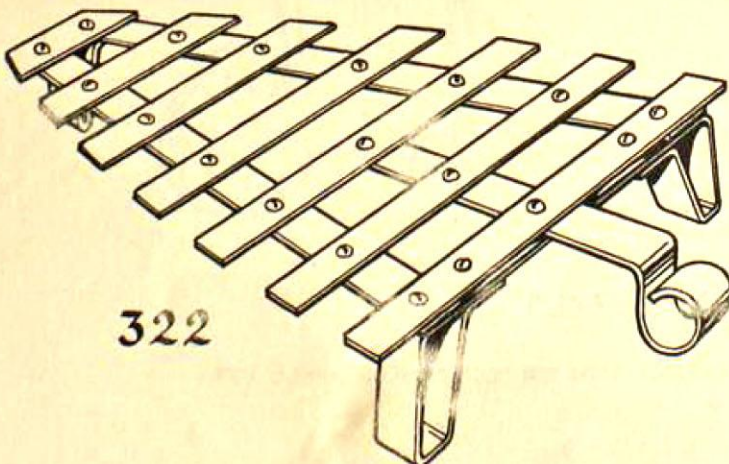
MAKE THIS 10" LONG. NOTICE CAREFULLY HOW THE ENDS OF THE CURVED STRUTS ARE BENT UP TO FIT IN THE FEET. THIS TO HOLD THEM FIRM WITHOUT USING A BOLT THROUGH THE BOTTOM OF THE FOOT.

TOAST RACK

MAKE THIS SEVEN INCHES LONG, THREE AND HALF INCHES WIDE, THREE INCHES HIGH MAKING THE HANDLE A LITTLE HIGHER. TIGHTEN UP UNDERNEATH NUTS FOR FIXING RODS BEFORE PUTTING CURVED STRUTS IN POSITION.



321



322

FLAT IRON STAND

THIS IS A VERY USEFUL ARTICLE FOR YOU TO MAKE. NOTE HOW THE FEET ARE BENT UP OUT OF ONE STRIP. THE LENGTH INCLUDING THE HANDLE SHOULD BE SEVEN INCHES.

PHOTO FRAME

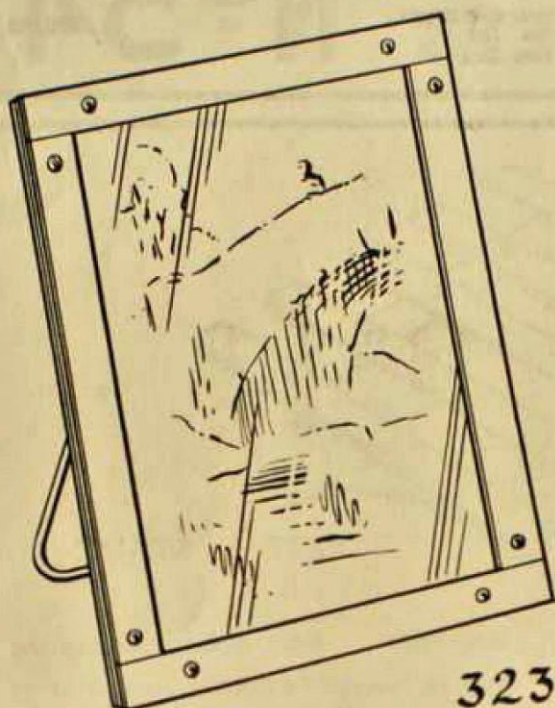


Fig 1

THIS IS MADE WITH JUNEERO GLASS SUBSTITUTE. THE FRAME IS MADE UP OF STRIPS AND THE BACK IS CUT WITH JUNEERO SHEARS FROM A SHEET OF JUNEERO RULED METAL. PLACE THE GLASS SUBSTITUTE AND PHOTOGRAPH IN POSITION THEN BOLT THE STRIP THROUGH THE SUBSTITUTE TO THE BACK.

THE STRUT IS MADE FROM A 15" ROD, NOTE CAREFULLY HOW IT IS FIXED.

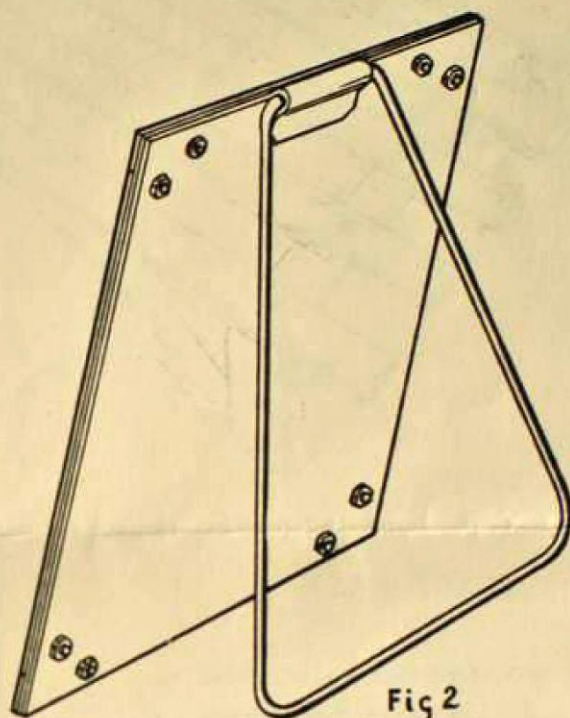


Fig 2

WHEN CUTTING OUT THE BACK CUT IT WITH A TAB AS SHOWN IN FIG. 3. BEND THIS TAB AND FORM IT ROUND A ROD WITH A HAMMER AS SHOWN. WHEN STRUT IS BENT UP SPRING IT INTO POSITION AS IN FIG. 2.

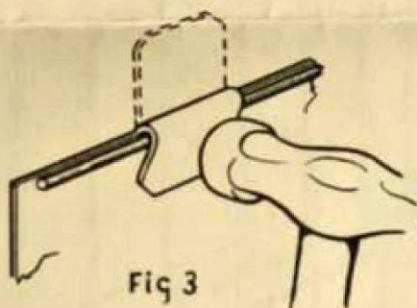
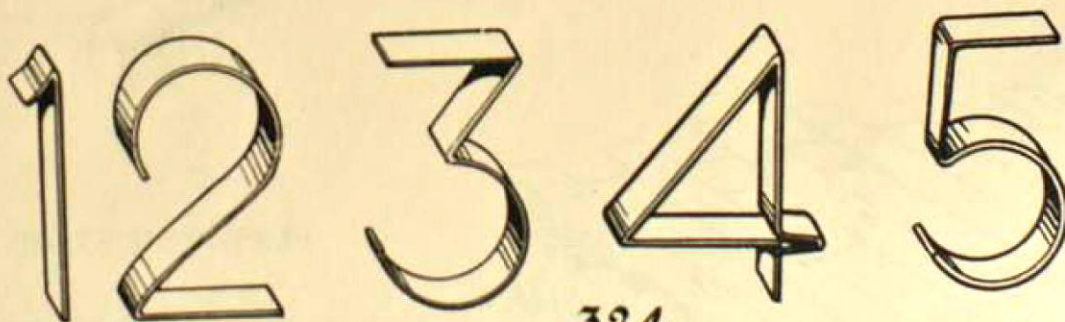


Fig 3



324

NUMERALS

YOU CAN MAKE ALL THE NUMERALS WITH THE HELP OF YOUR SCROLL TOOL.