

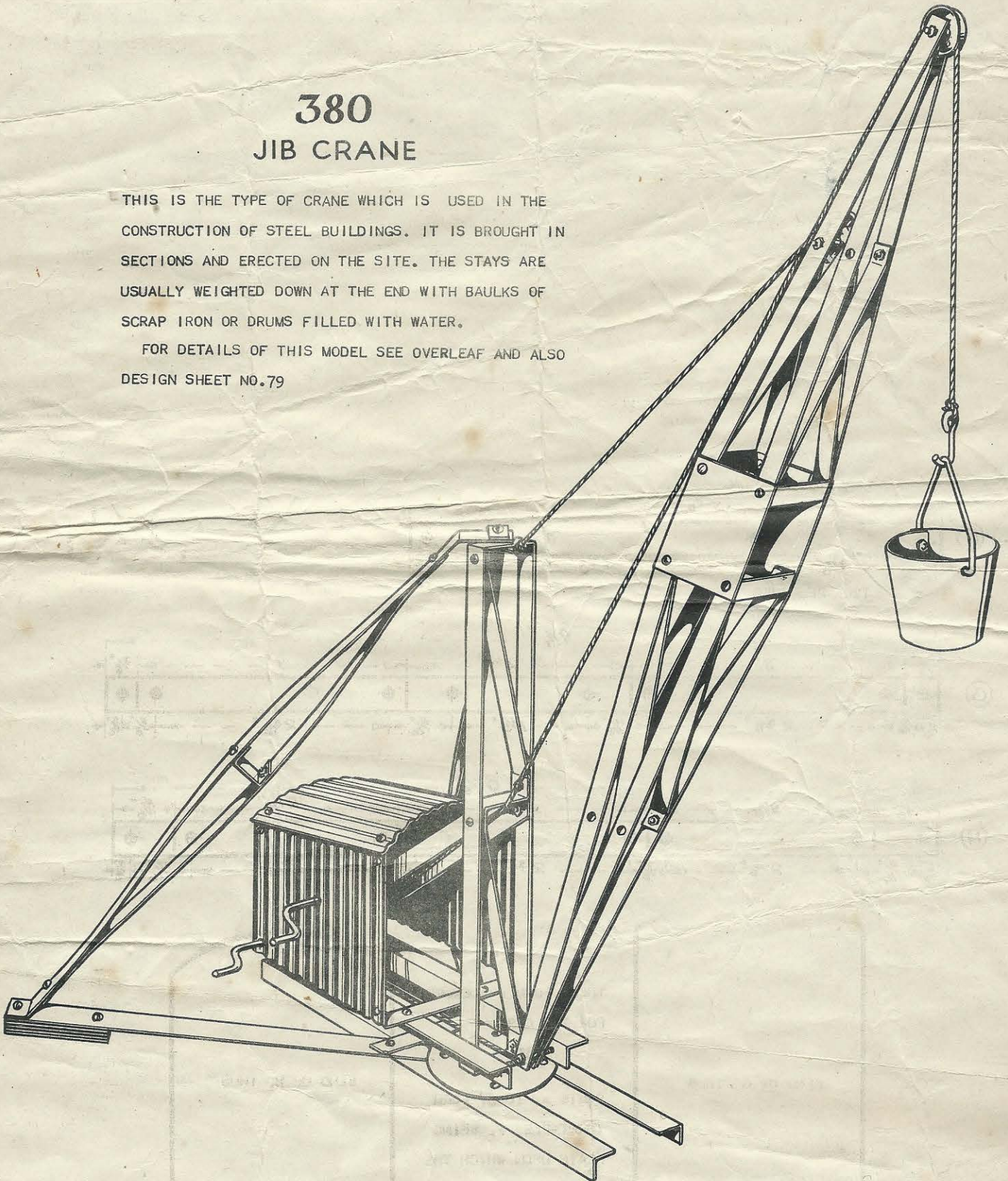
JUNEERO DESIGN SHEET N°78

FOR PART 2. SEE DESIGN SHEET NO.79

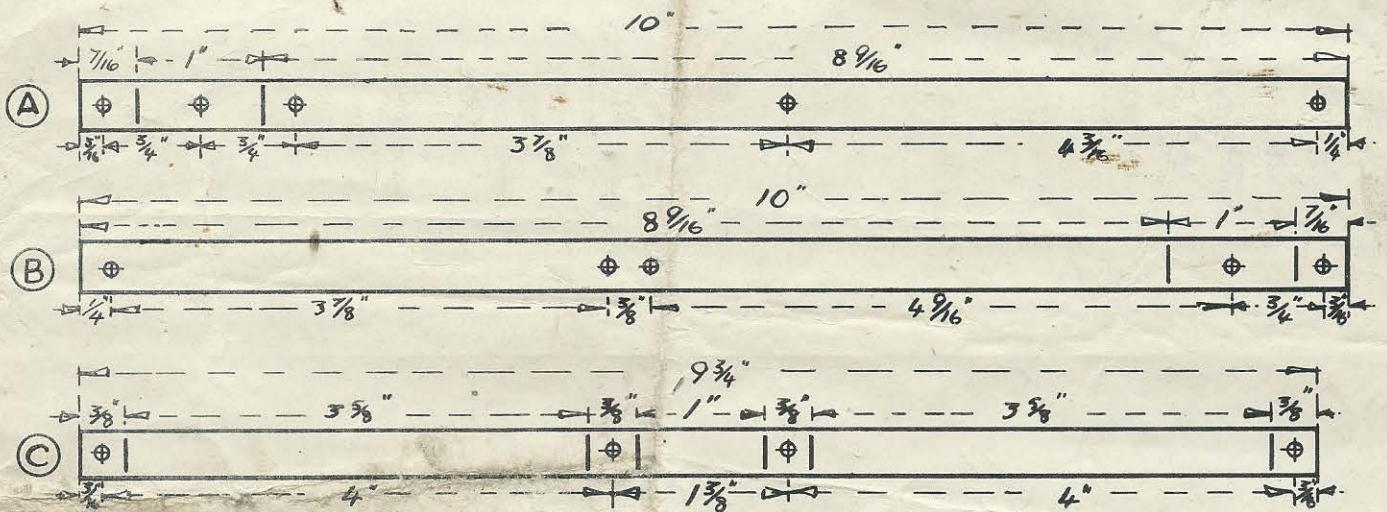
380 JIB CRANE

THIS IS THE TYPE OF CRANE WHICH IS USED IN THE CONSTRUCTION OF STEEL BUILDINGS. IT IS BROUGHT IN SECTIONS AND ERECTED ON THE SITE. THE STAYS ARE USUALLY WEIGHTED DOWN AT THE END WITH BAULKS OF SCRAP IRON OR DRUMS FILLED WITH WATER.

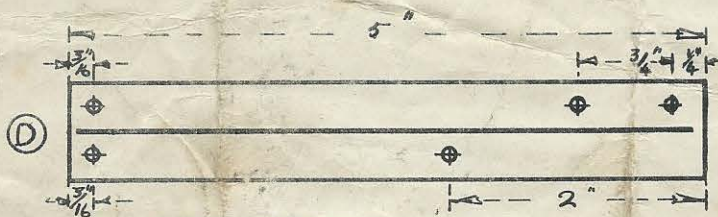
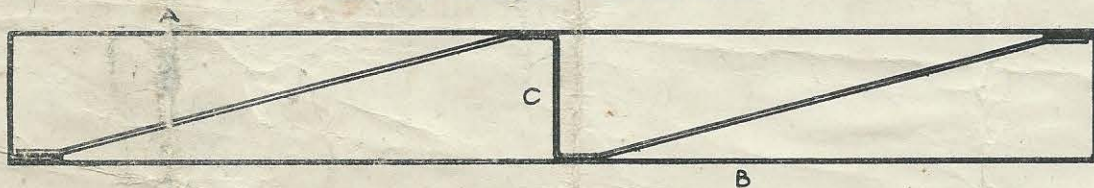
FOR DETAILS OF THIS MODEL SEE OVERLEAF AND ALSO DESIGN SHEET NO.79



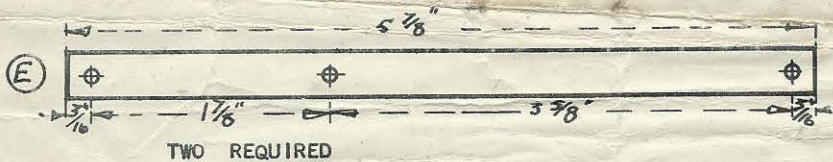
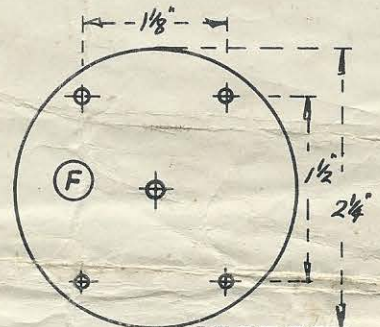
THE ARTICLE "HOW TO READ A JUNEERO BLUE PRINT" IN THE JUNEERO MANUAL IS VERY HELPFUL TO BEGINNERS.



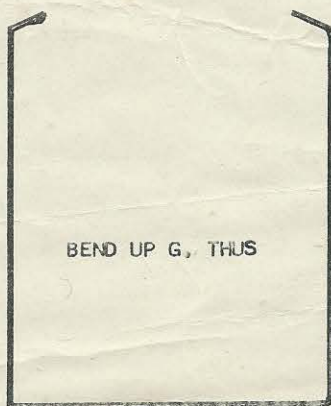
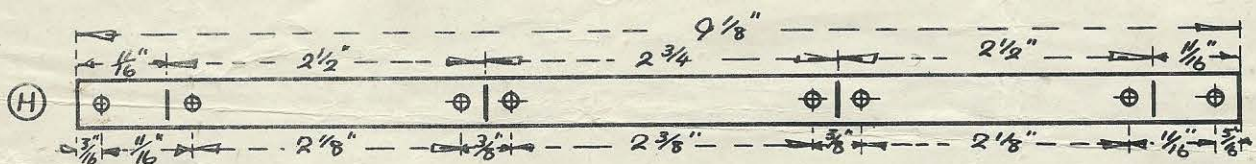
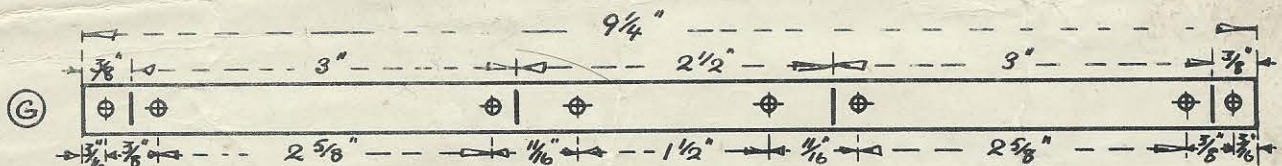
ONE EACH OF THESE ARE REQUIRED TO MAKE UPRIGHT
THEY ARE ASSEMBLED AS SHOWN BELOW.



A PAIR OF THESE REQUIRED

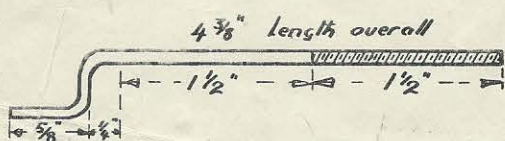
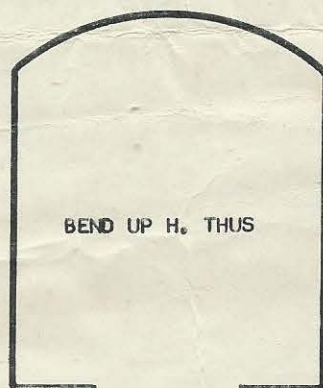


TWO REQUIRED

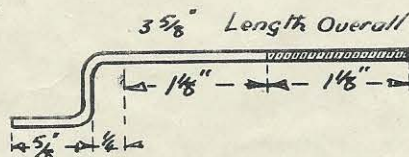


THESE FORM FRAMEWORK
FOR THE CAB.

PARTS A. TO J. FORM
TURNABLE, F. BEING
PLATE UPON WHICH THE
TURNABLE REVOLVES.



WINDING SHAFT FOR ELEVATING JIB



WINDING SHAFT FOR HOIST

