

JUNEERO DESIGN SHEET N°85

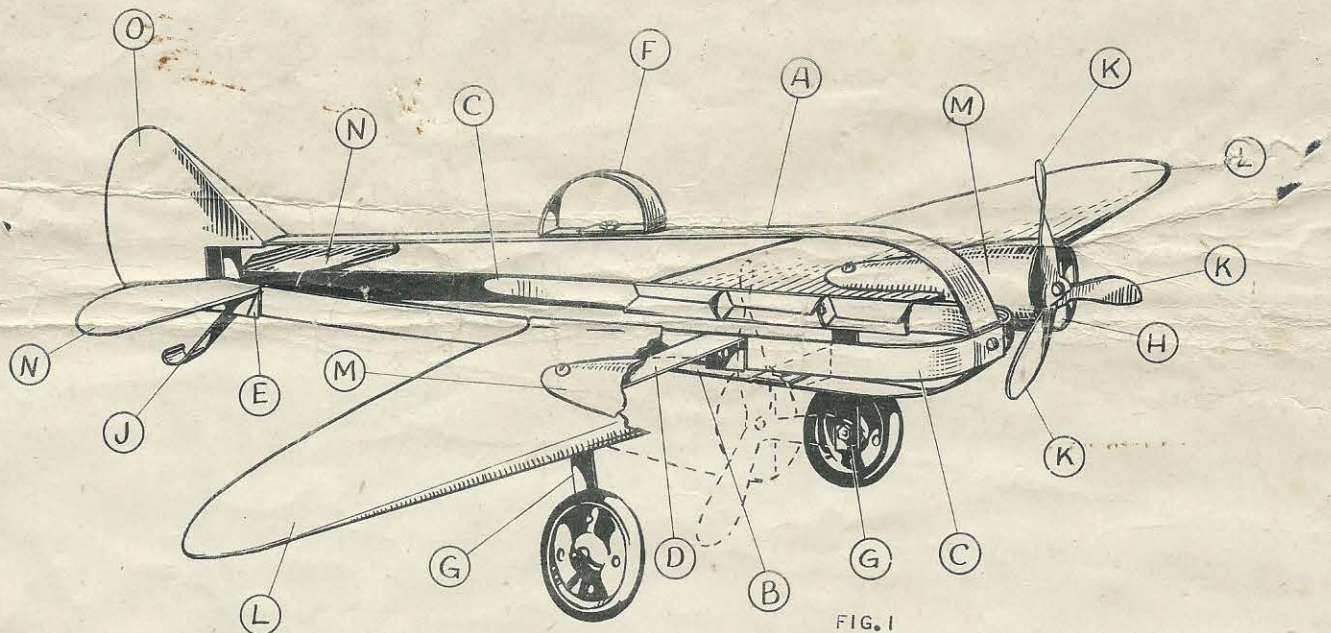
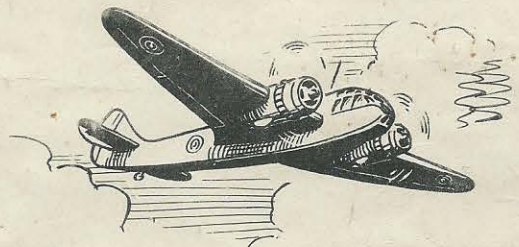
387 BRISTOL BLENHEIM I

DUTIES - BOMBING, FIGHTING & RECONNAISSANCE

CREW - THREE

ARMAMENT - MACHINE GUNS AND BOMBS

TWIN ENGINE, MID-WING MONOPLANE WITH SHORT, BLUNT NOSE WITH WINDOWS. GUN TURRET ON TOP OF FUSELAGE, TAPERED WINGS, SQUAT ENGINE NACELLES, WHEELS RETRACTING INTO NACELLES.



INSTRUCTIONS-

PREPARE PARTS AS SHOWN OVERLEAF. ASSEMBLE PARTS A. B. & C. TO FORM FUSELAGE. BOLT INTO POSITION WING AND TAILPLANE SPARS AND GUN TURRET, PARTS D. E. & F.. NOW FOLD WINGS WHERE SHOWN AND CLIP WITH TABS ALONG THE SIDE, SLIP WINGS OVER THE SPARS AND CLIP TO SIDE MEMBERS C. WITH TABS MARKED "a" & "b".

BEND UP THE ENGINE NACELLES AS SHOWN IN FIG. 2, BOLT BEARINGS H. IN POSITION AND FIT ON PROPELLERS. NOW SLIP NACELLES INTO POSITION AND BOLT THROUGH CENTRE OF WINGS, SEE FIG. 1. THESE SAME BOLTS SERVE TO HOLD

UNDERCARRIAGE LEGS G. - USE LONG BOLTS TO FIT THE WHEELS TO THE LEGS. BOLT TAIL SKID J. TO B.. FIX TAILPLANES IN A SIMILAR MANNER TO THE WINGS.

FINALLY FOLD UP THE RUDDER WHERE INDICATED AND CLIP WITH TABS ALONG THE BACK. SLIP THE RUDDER OVER ENDS OF STRIPS C. AND CLIP ON WITH TABS MARKED "b". BEND TABS MARKED "a" UNDER STRIP A..

THE FUSELAGE CAN BE COVERED IN WITH PAPER AND THE WHOLE PAINTED IN REALISTIC COLOURS.

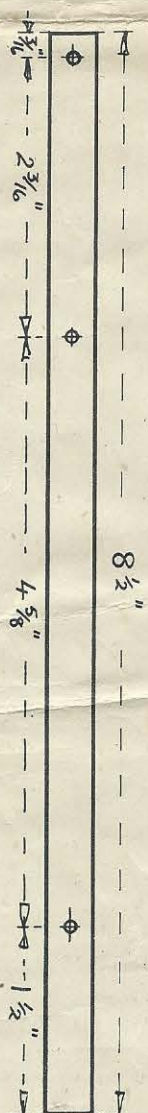
THE ARTICLE "HOW TO READ A JUNEERO BLUE PRINT" IN THE JUNEERO MANUAL IS VERY HELPFUL TO BEGINNERS.



(A) FUSELAGE TOP MEMBER



(B) FUSELAGE BOTTOM MEMBER

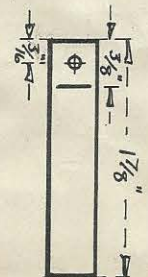


(C) FUSELAGE SIDE MEMBERS - 2 REQUIRED

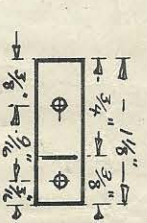
BEND UP A. THUS



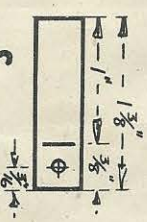
(D) WING SPARS - 2 REQUIRED



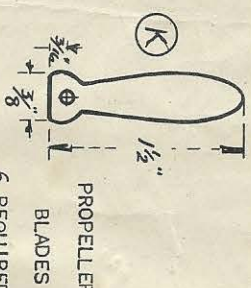
(E) TAILPLANE SPARS - 2 REQUIRED



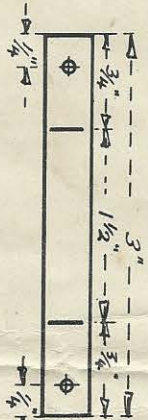
(H) PROP. BEARING - 2 REQUIRED



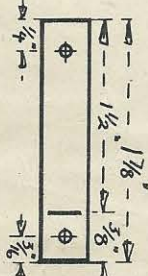
(J) TAIL SKID



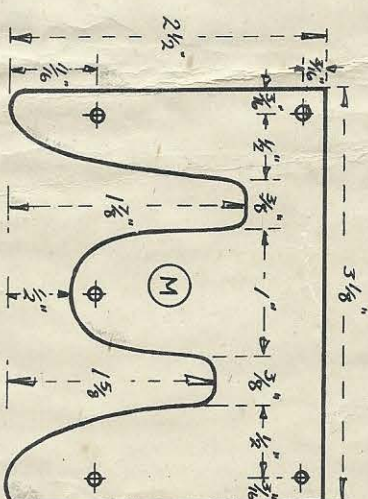
(K) PROPELLER BLADES 6 REQUIRED



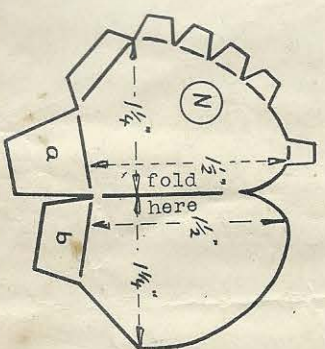
(F) GUN TURRET



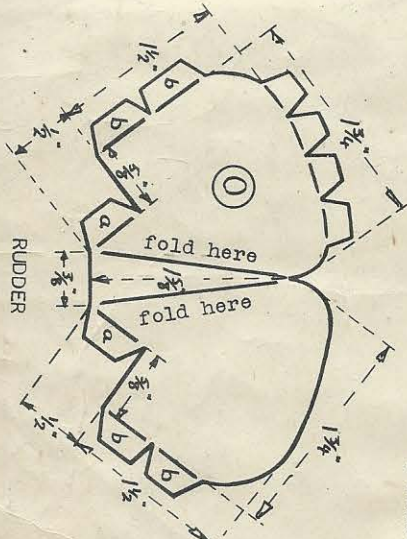
(G) UNDERCARRIAGE LEGS - 2 REQUIRED



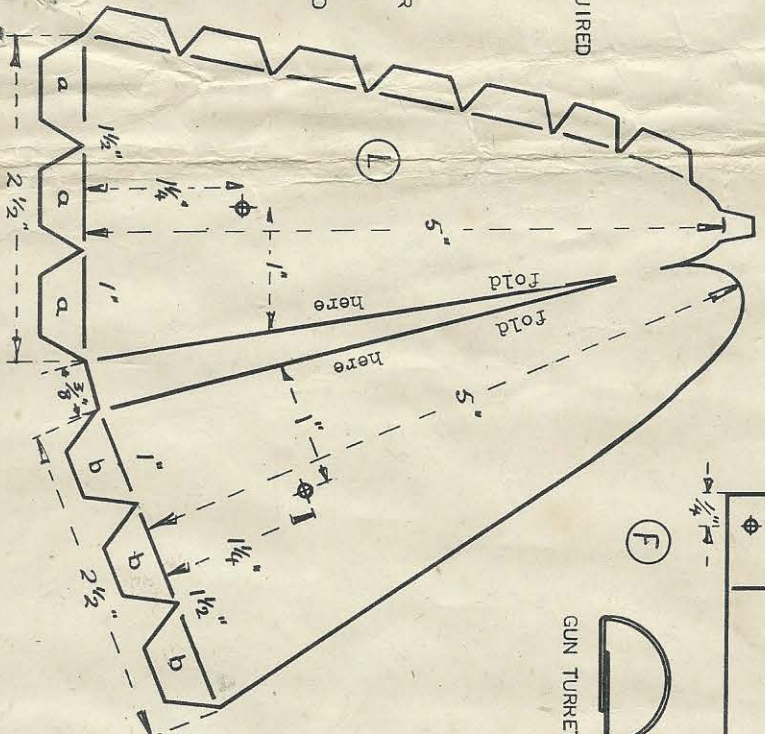
(M) ENGINE NACELLES 2 REQUIRED



(N) TAILPLANES - PAIR REQUIRED



(O) RUDDER



(L) WINGS - PAIR REQUIRED

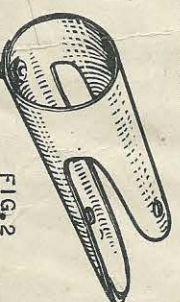


FIG. 2