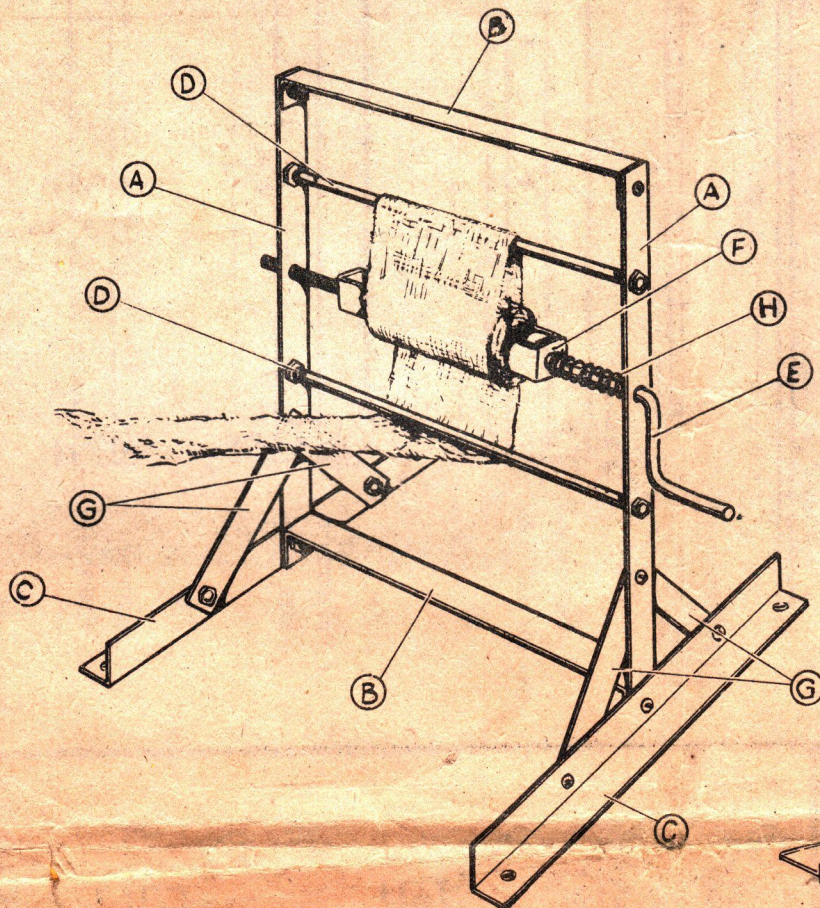


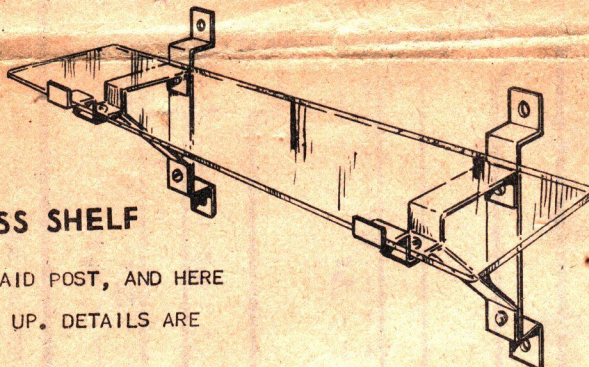
JUNEERO DESIGN SHEET No 107

420 BANDAGE WINDER



YOUR FIRST AID POST WOULD BE GLAD TO HAVE ONE OF THESE. MAKE UP THE PARTS AS SHOWN OVERLEAF AND ASSEMBLE IN THE ORDER A, B, C ETC. TO ASSEMBLE SPINDLE, PASS "E" THROUGH RIGHT HAND UPRIGHT, THEN SLIP SPRING "H" IN PLACE, AND PASS "E" THROUGH ONE END OF "F". NOW THREAD NUT ON TO "E" AND PASS "E" THROUGH OTHER END OF "F", AND THREAD ON SECOND NUT. TIGHTEN THE TWO NUTS TO HOLD "F" IN CENTRE OF "E". COMPLETE WITH A COAT OF WHITE ENAMEL. THE WINDER SHOULD BE SCREWED DOWN TO A SHELF OR TABLE.

TO WIND A BANDAGE THE END IS PASSED UNDER THE LOWER ROD AND UP OVER THE TOP ONE, THEN TWISTED ONCE OR TWICE ROUND "F". "E" IS THEN TURNED, AND THE BANDAGE ALLOWED TO FEED ROUND THE RODS.



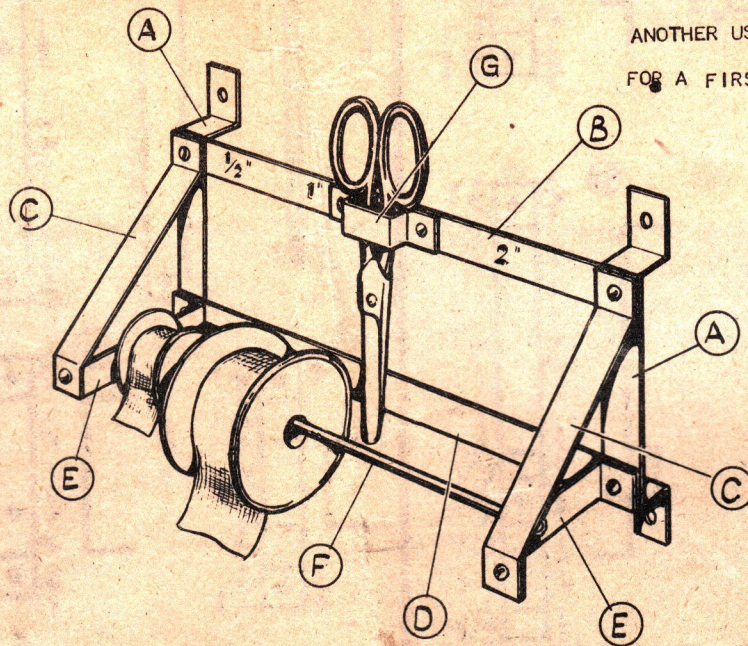
421 BRACKETS FOR GLASS SHELF

GLASS SHELVES ARE ALWAYS HANDY IN A FIRST AID POST, AND HERE IS A SIMPLE PAIR OF BRACKETS FOR FIXING ONE UP. DETAILS ARE GIVEN OVERLEAF.

422

ADHESIVE TAPE HOLDER

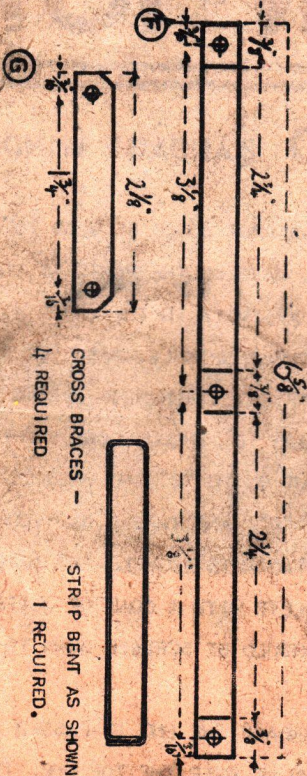
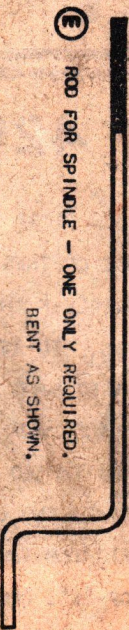
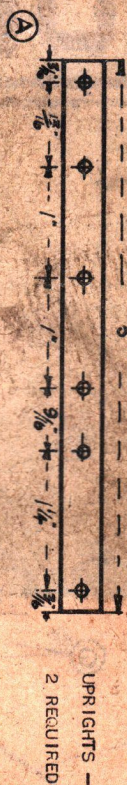
SEE OVERLEAF FOR THE PARTS REQUIRED FOR THIS. THE HOLDER ALLOWS FOR 3 SIZES OF TAPE AND PROVIDES A PLACE FOR SCISSORS WHICH ARE SO OFTEN MISLAID AT THE CRUCIAL MOMENT. TO PUT THE REELS IN POSITION REMOVE THE NUT FROM ONE END OF THE ROD AND SLIDE IT OUT OF THE BRACKETS. THIS SHOULD ALSO BE FINISHED IN WHITE ENAMEL.



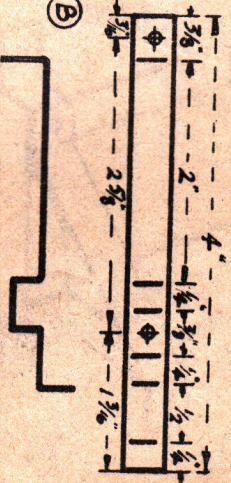
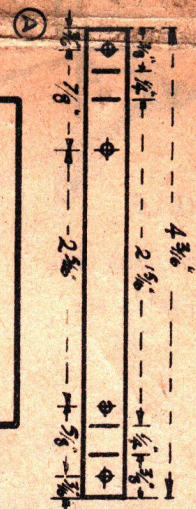
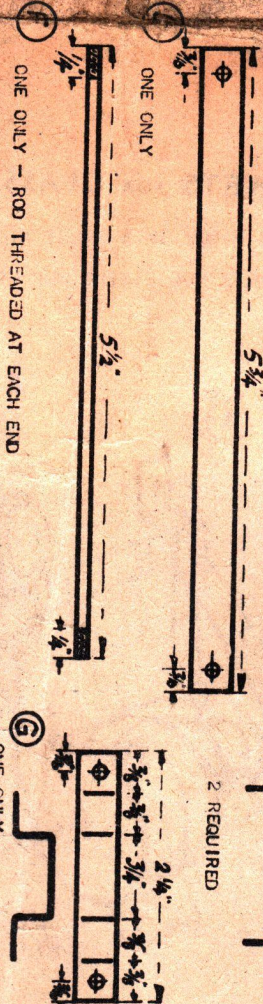
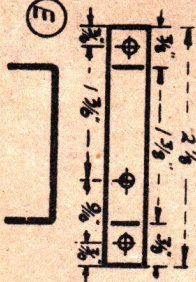
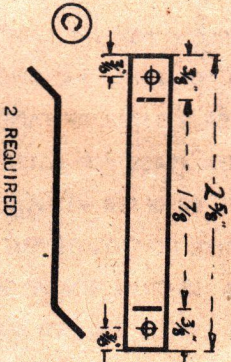
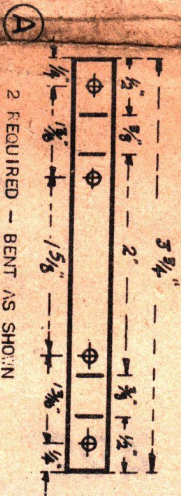
ANOTHER USEFUL GADGET FOR A FIRST AID POST.

ASK YOUR DEALER TO SHOW YOU
THE MORE ADVANCED JUNEERO DESIGNS AND MODELS

PARTS REQUIRED FOR 1/20



PARTS REQUIRED FOR 1/22



PARTS REQUIRED FOR 1/21

ONE EACH OF THESE PARTS IS REQUIRED FOR EACH BRACKET