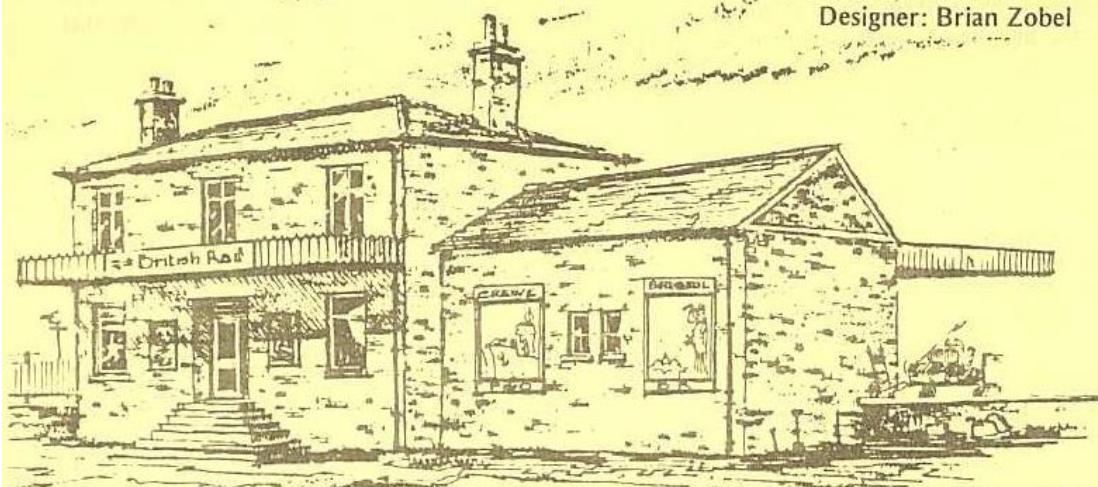


LINKA

LINKA BUILDING KIT

TOWN STATION

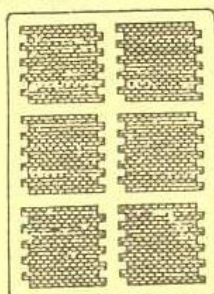
Designer: Brian Zobel



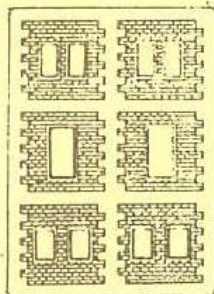
PARTS NEEDED:

Before building this model, do become familiar with casting, gluing, and cutting parts, as shown in the "Basic Instructions".

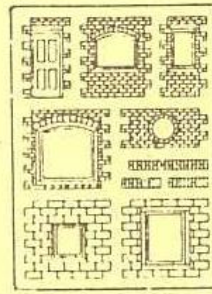
There are six moulds in this set. Cast each mould as shown below:



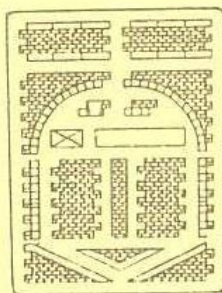
CAST B1 SIX TIMES



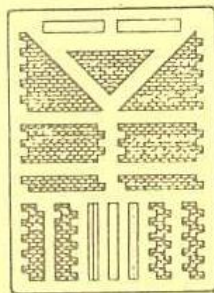
CAST B3 FOUR TIMES



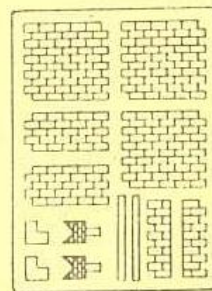
CAST B4 FOUR TIMES



CAST B5 EIGHT TIMES



CAST B6 TWICE
(+ extra ridging
- see page 12)



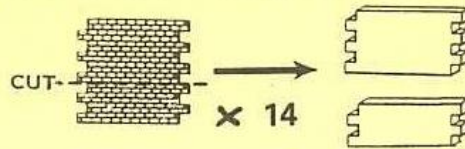
CAST R1 EIGHT TIMES

(n.b. Extra castings will be needed for the platform - see page 16)

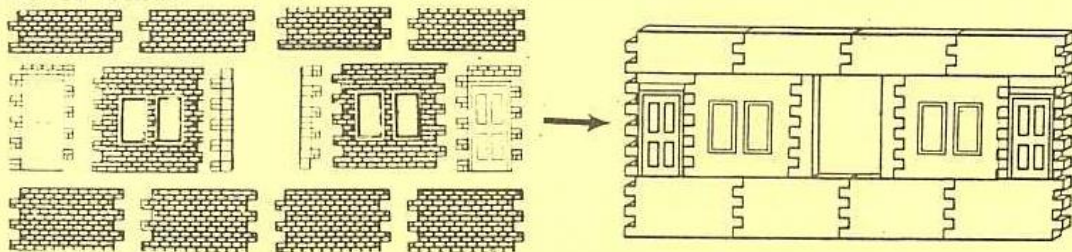
You will now have enough castings (plus extras) to make this model. The extras can be used to replace broken castings - or to help build your own design variations.

BUILDING THE TICKET OFFICE:

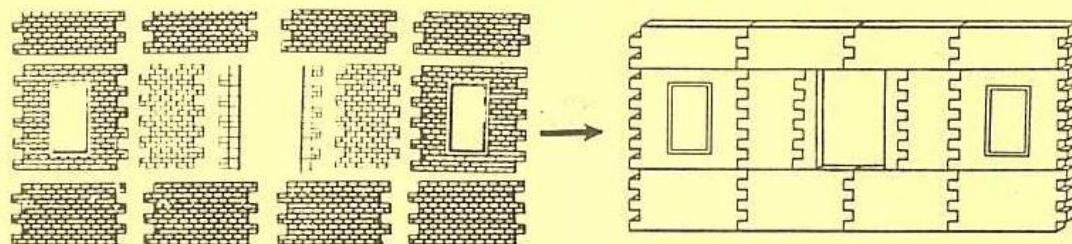
1) Six-tier and four-tier castings will be needed to build this station. Make these castings by cutting each of FOURTEEN full panels into six-tier and four-tier parts, as shown below, to make fourteen of each part.



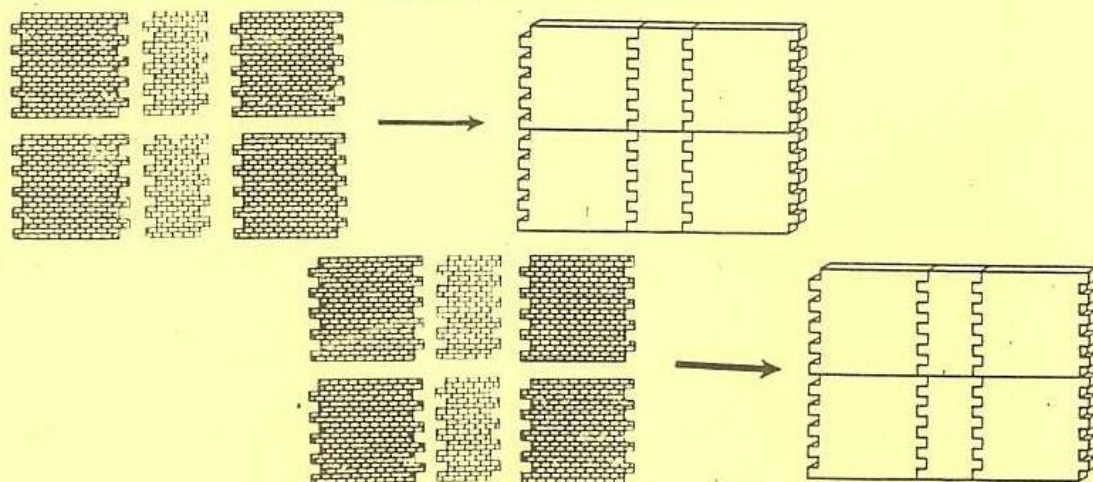
2) Using the castings shown below, carefully glue the front wall together. To do this, it is best to put the castings on a smooth surface (detail side face down) and then slide them together. When the wall is complete (and still face down), press all the castings into good alignment before leaving to set. This final lining up of each wall is important, because poor alignment will show up on the finished model.



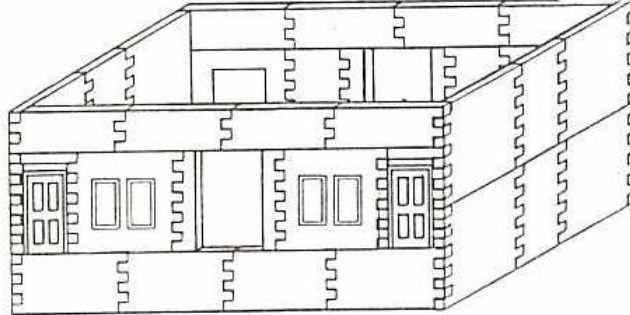
3) Using the castings shown below, carefully glue the back wall together.



4) Glue the two side walls together, as shown below.

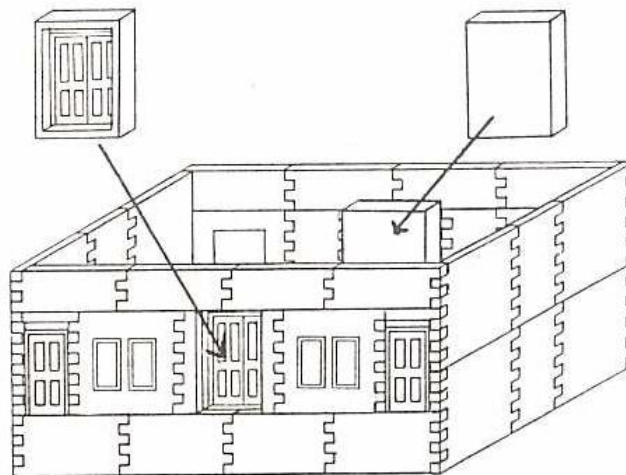


5) When set, glue the four walls together, carefully easing the teeth from one wall into another. Try to be careful; but don't worry if some teeth break off during this tricky operation, as broken teeth can be glued back into place. (Any fracture line will become invisible after the model has been painted.)



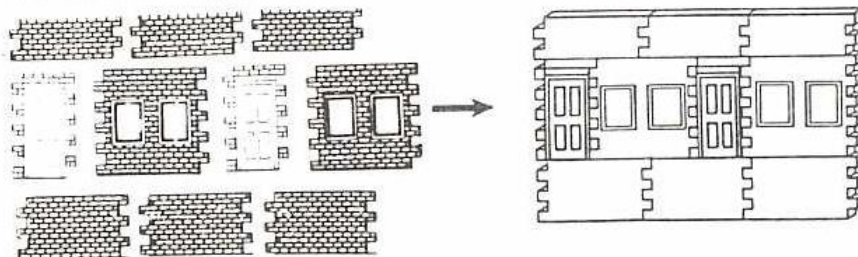
6) Glue the two supplied door units into place behind each central aperture, as shown below. Check that all is square; then put the completed assembly aside to allow the glue to harden completely.

(OPTION: If you prefer an open central hallway, leave off the door units and build the hallway with extra castings from moulds B1, B3, and B4. Glue into position between the two central apertures, cutting as needed.)

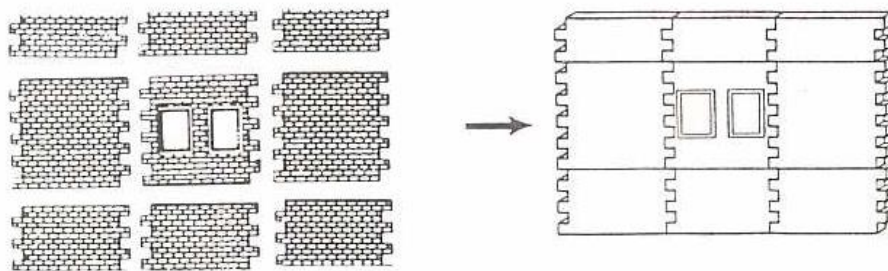


BUILDING THE STATION EXTENSION:

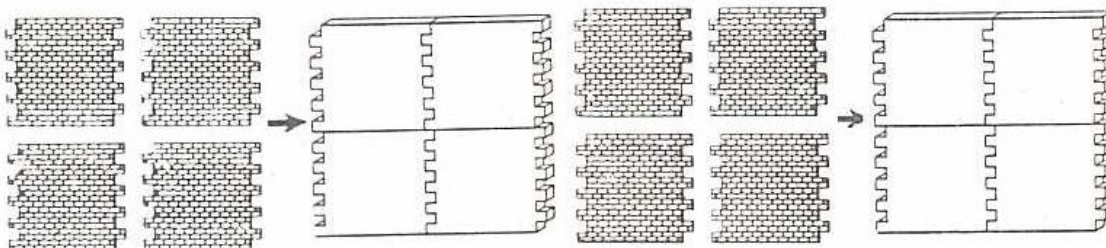
1) Glue the front wall together.



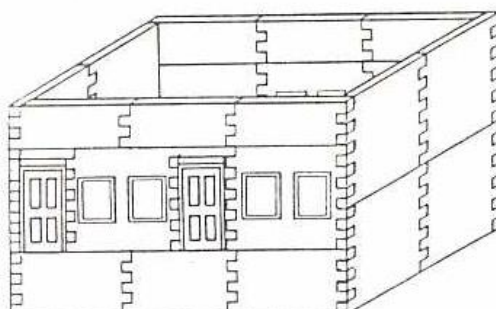
2) Glue the back wall together.



3) Glue the two side walls together.

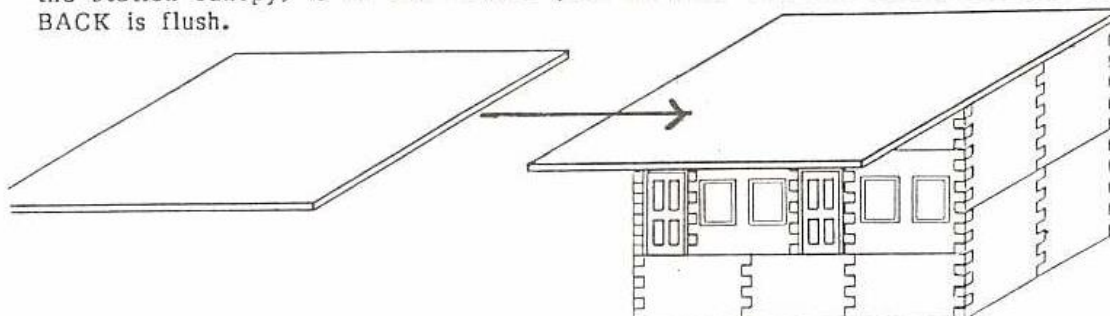


4) When set, glue the four walls together, carefully easing the teeth from one wall into another, as with the ticket office. Check that all is square; then put the completed assembly aside to allow the glue to harden completely.

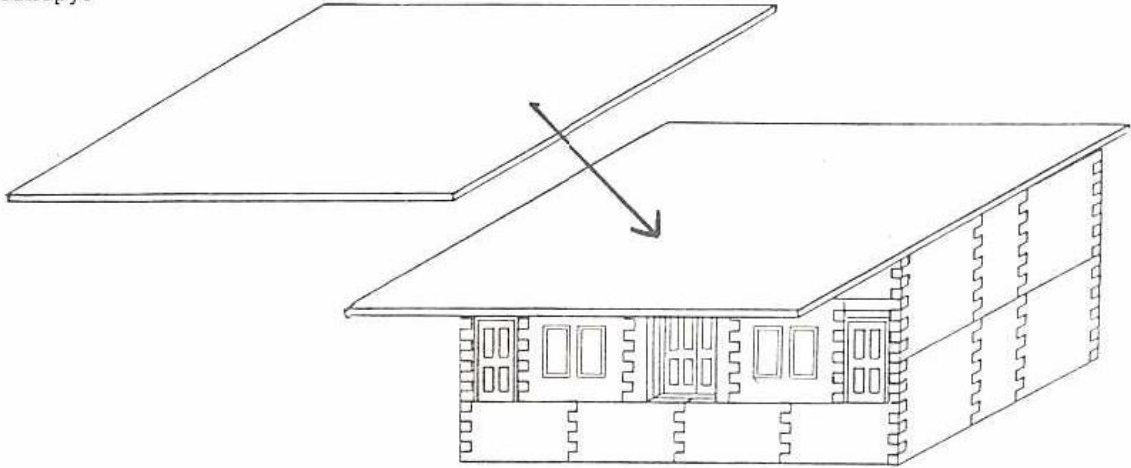


JOINING THE LOWER STATION BUILDINGS:

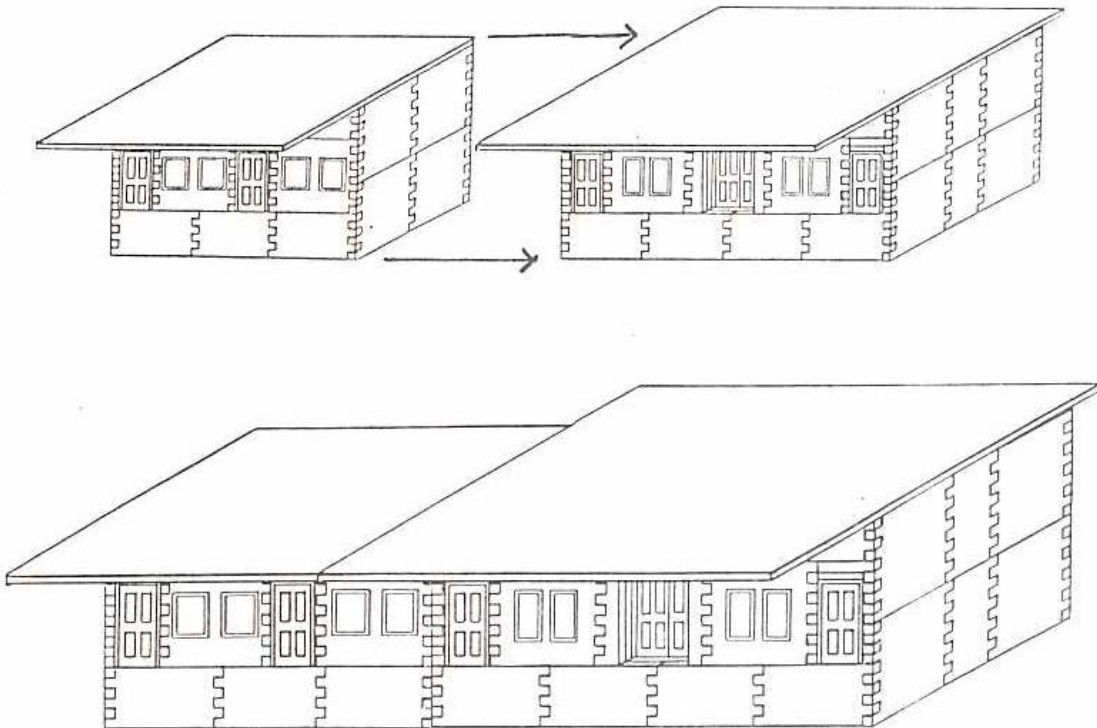
1) Glue the supplied card sheet marked "1" into position on top of the station extension, as shown below. Make sure that the overhang (which becomes part of the station canopy) is on the FRONT (i.e. the side with two doors) and that the BACK is flush.



2) Glue the supplied card sheet marked "2" into position on top of the ticket office, as shown below. Make sure that the main overhang is exactly equal to the overhang on the station extension, and is on the FRONT (i.e. the side with three doors). This will give a smaller overhang at the back for the entrance canopy.

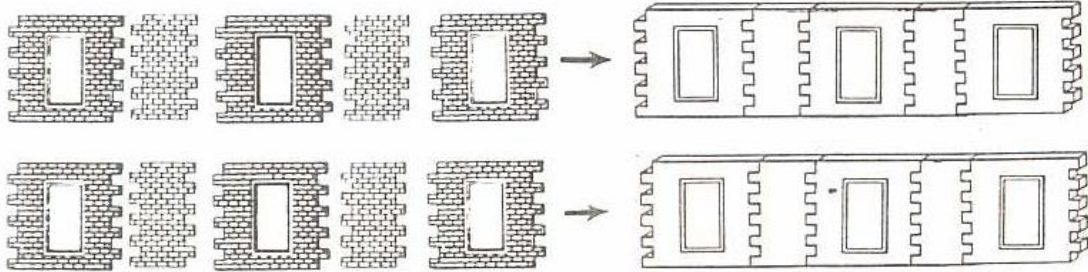


3) Carefully glue the ticket office and station extension together, with the front walls in line (and therefore the main canopy overhang also in line). This will leave the back walls "stepped", as the ticket office is wider than the station extension.

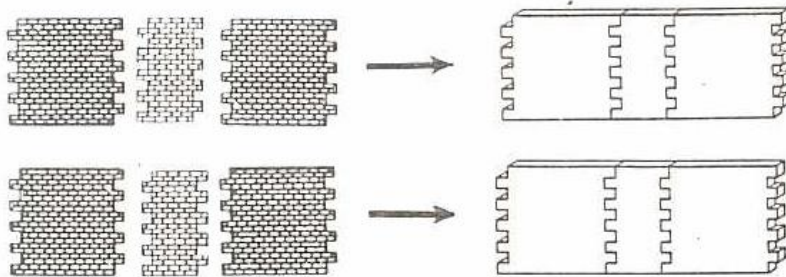


ADDING THE UPPER FLOOR:

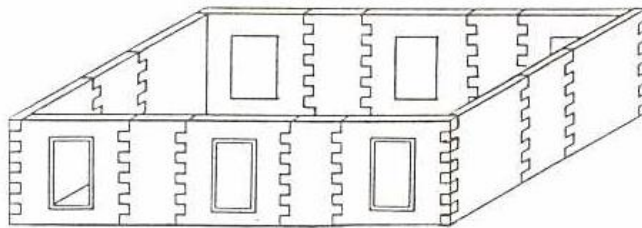
- 1) Glue the two main walls together.



- 2) Glue the two side walls together.



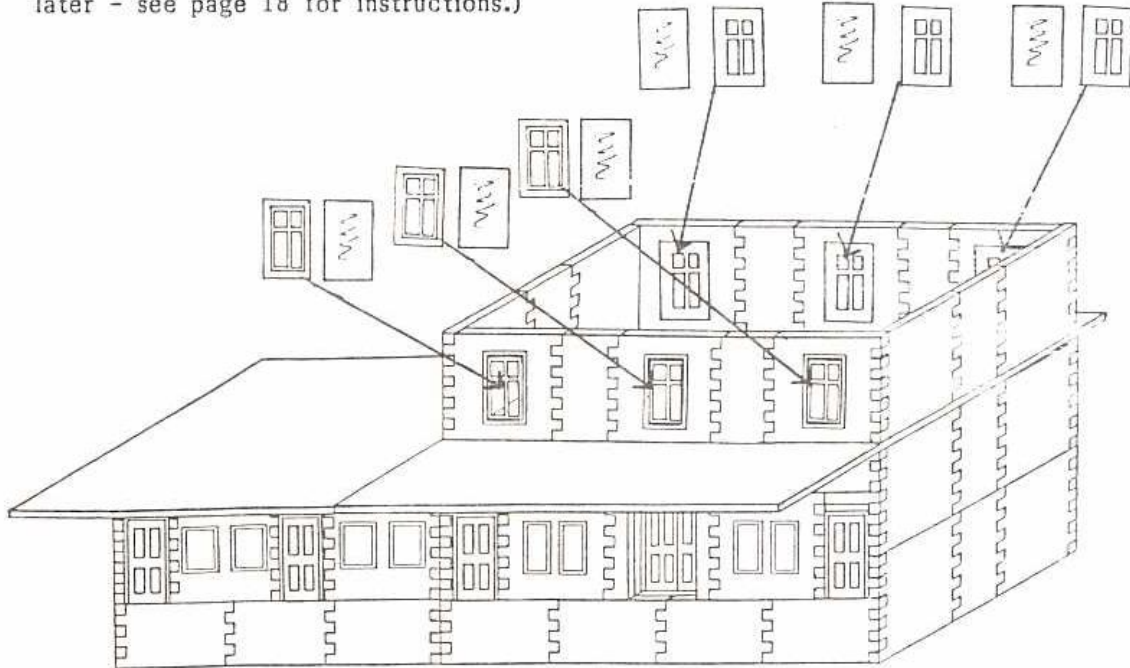
- 3) Glue the four walls into a rectangle, as shown below.



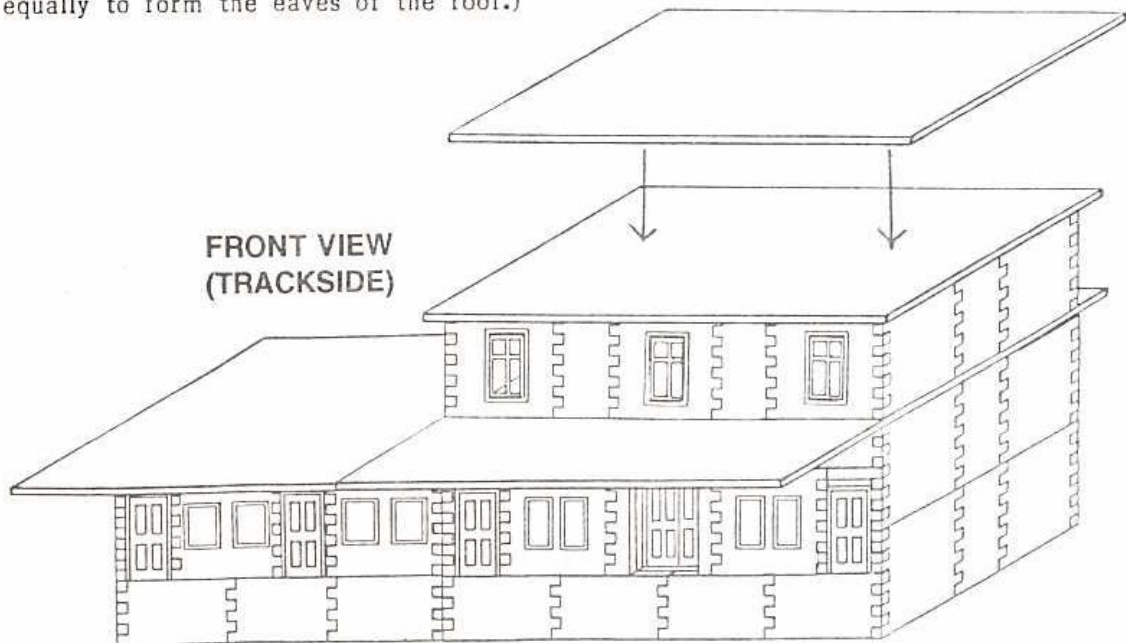
- 4) Glue the completed assembly onto the station building, in line with the ticket office, as shown below.

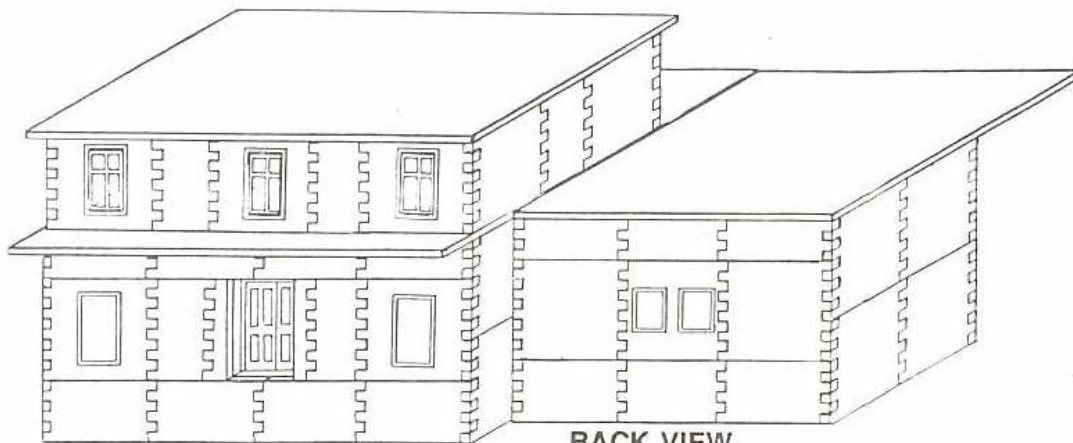


5) As access to the upper floor will be impossible once the roof is in place, the windows must be added now. Glue six of the supplied windows (shown below) onto the supplied clear window sheet, which will give six glazed windows. Then cut them out with scissors, and glue into position behind each of the six apertures, as shown below. (It is a good idea to paint the window apertures before gluing in the windows, to avoid splashing paint onto the glazed windows later - see page 18 for instructions.)



6) Glue the supplied sheet marked "3" into position on top of the upper floor, as shown below. (Position the card carefully, so that it overhangs all four walls equally to form the eaves of the roof.)

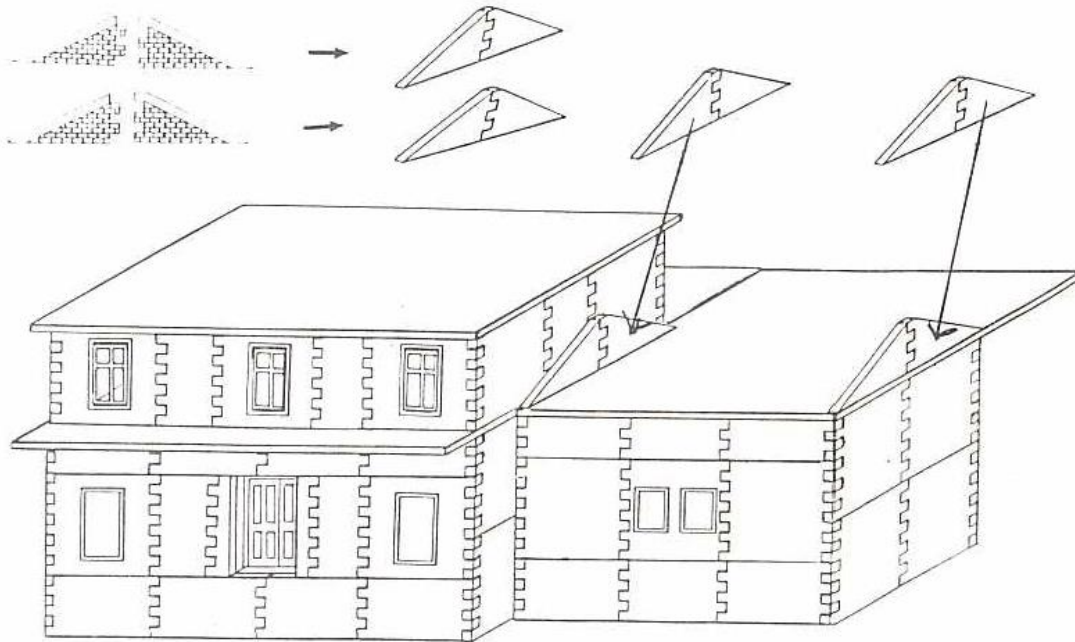




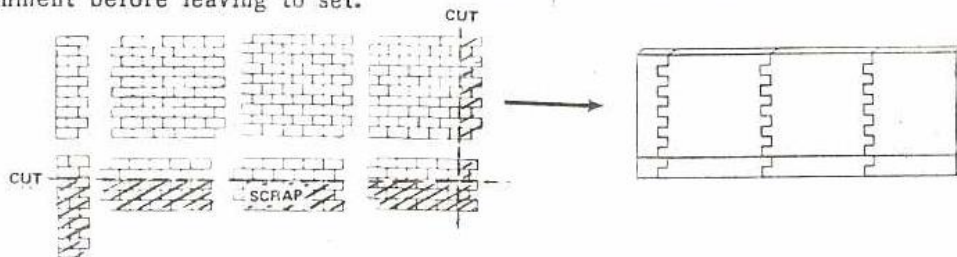
BACK VIEW
(ROADSIDE)

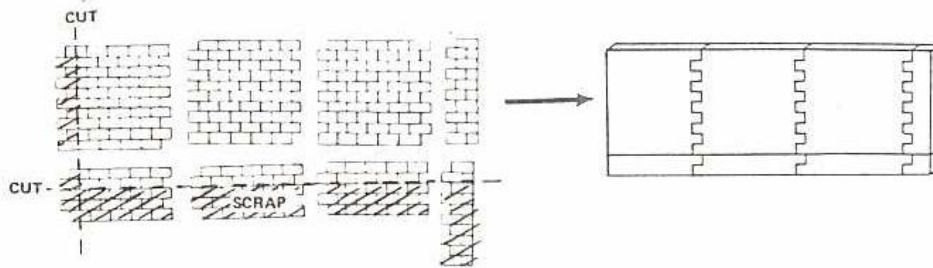
ADDING THE SMALL ROOF:

1) Glue the two roof gables together, and glue into place on the station extension, as shown below.



2) Glue the two roofs together, cutting as shown below. Check for good alignment before leaving to set.

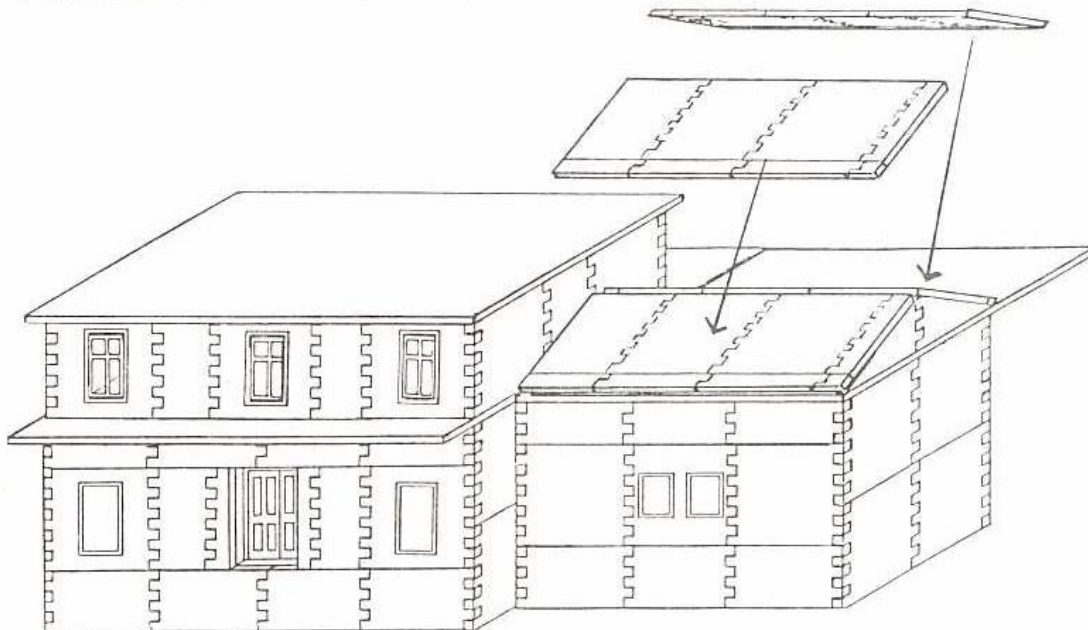




3) The bottom edge of each roof part needs to be chamfered to create the correct angle for gluing into position. Place each roof part face down (smooth side up) on a firm surface and sand the bottom edge to an angle, as shown below.

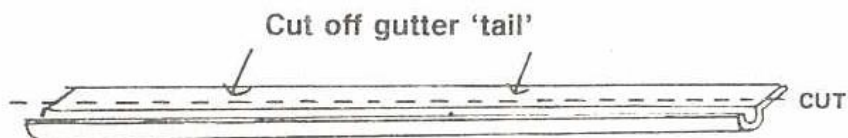


4) Glue the two roofs into position, as shown below.

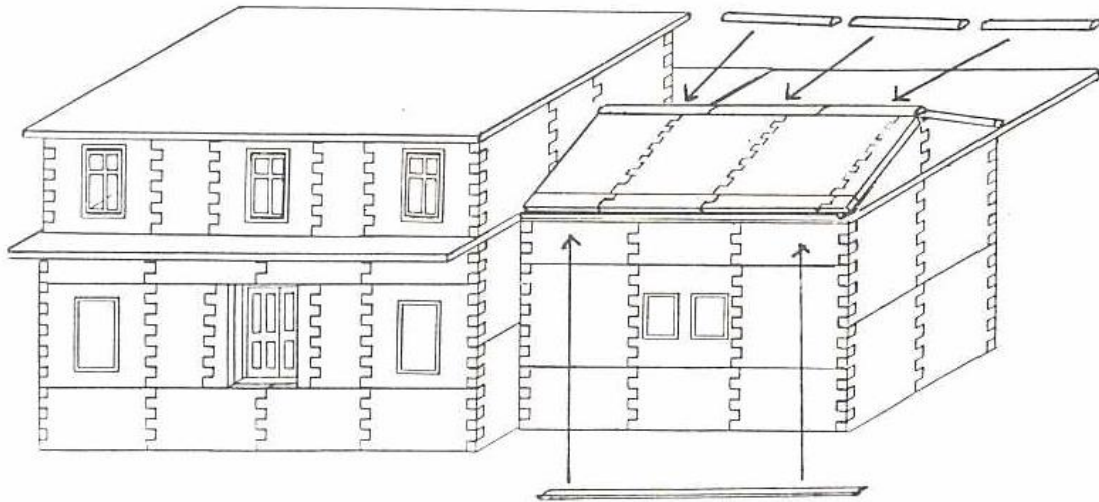


5) Glue half-round beading (from mould B6) into position at the apex to form the roof ridge, cutting as needed, as shown on the next page.

6) Cut the supplied plastic guttering to length; then cut off the 'tail', as shown below, so that it can be glued into position on the rear roof, as shown on the next page.

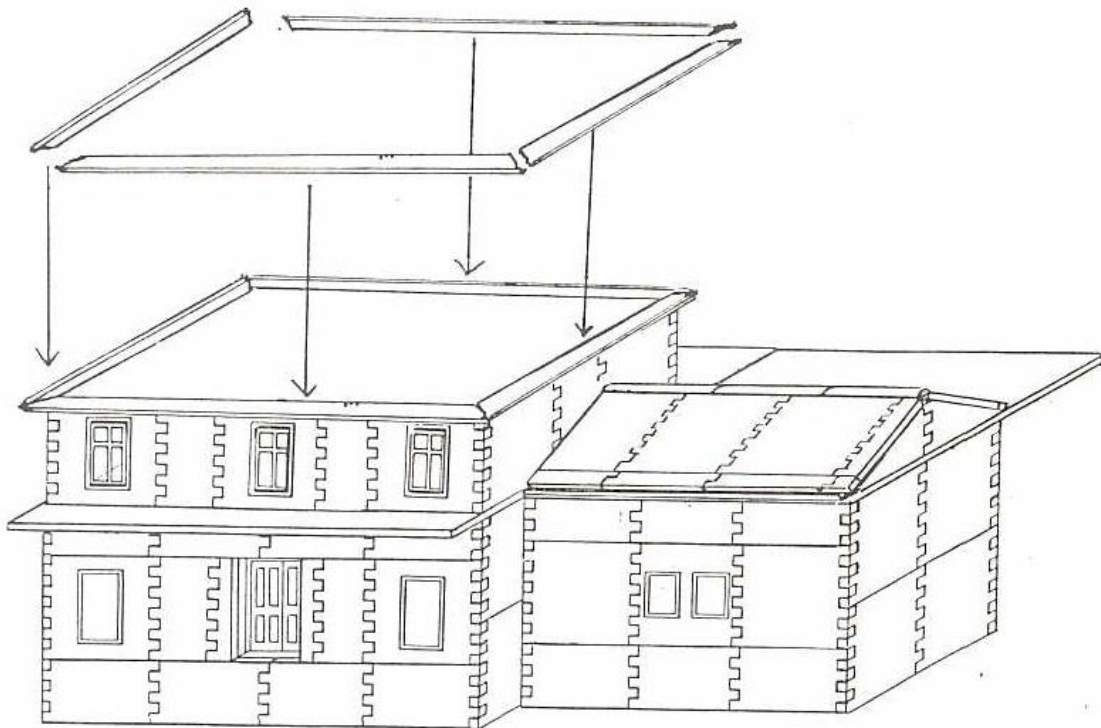


10

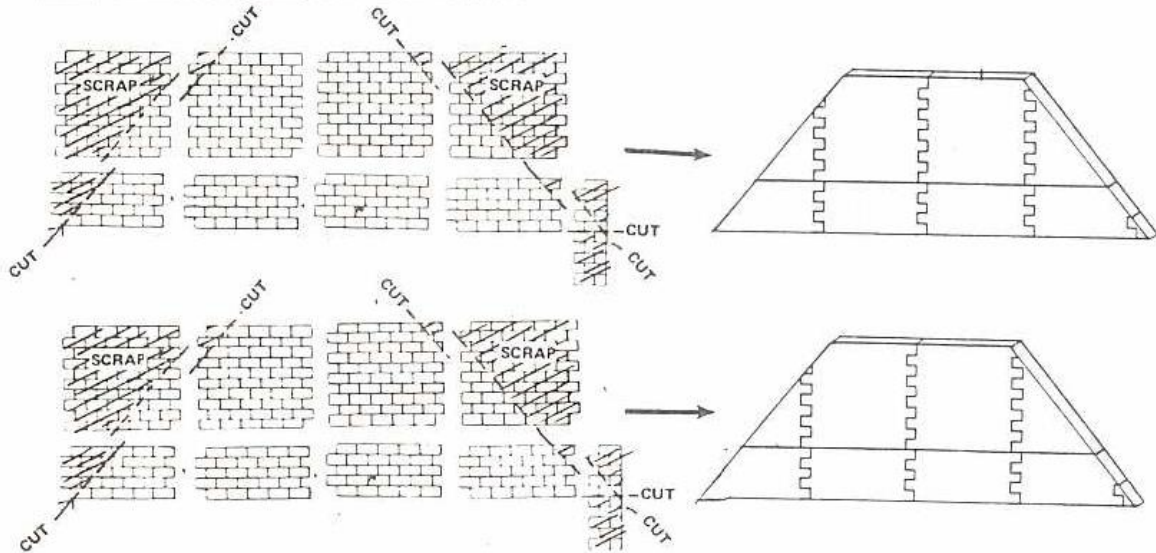


ADDING THE MAIN ROOF:

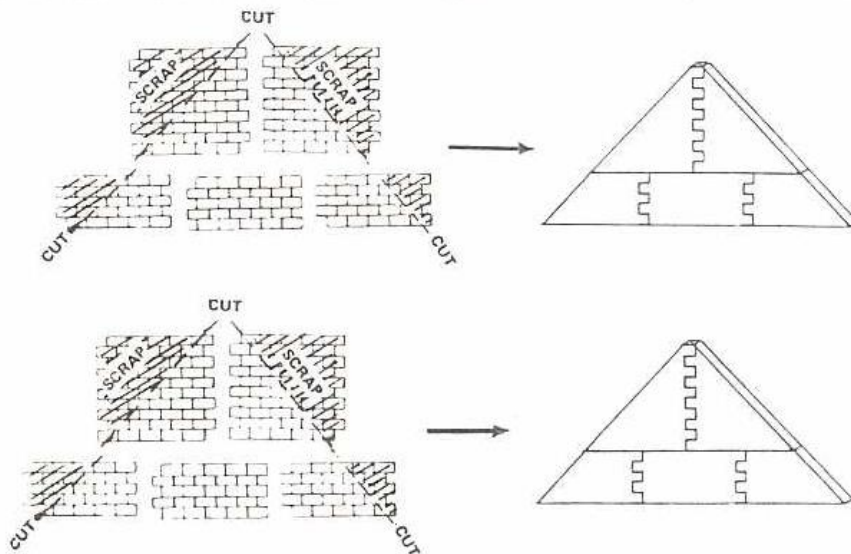
1) Glue four pieces of the supplied guttering into place on the roof eaves, as shown below, cutting at angles to make each corner.



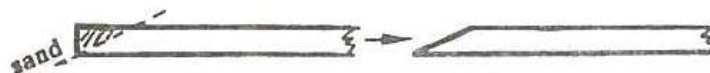
2) Glue the front and back roofs together, building into a complete block, and then cutting as shown below. Cut carefully to the angles shown, scoring many times before snapping off the surplus.



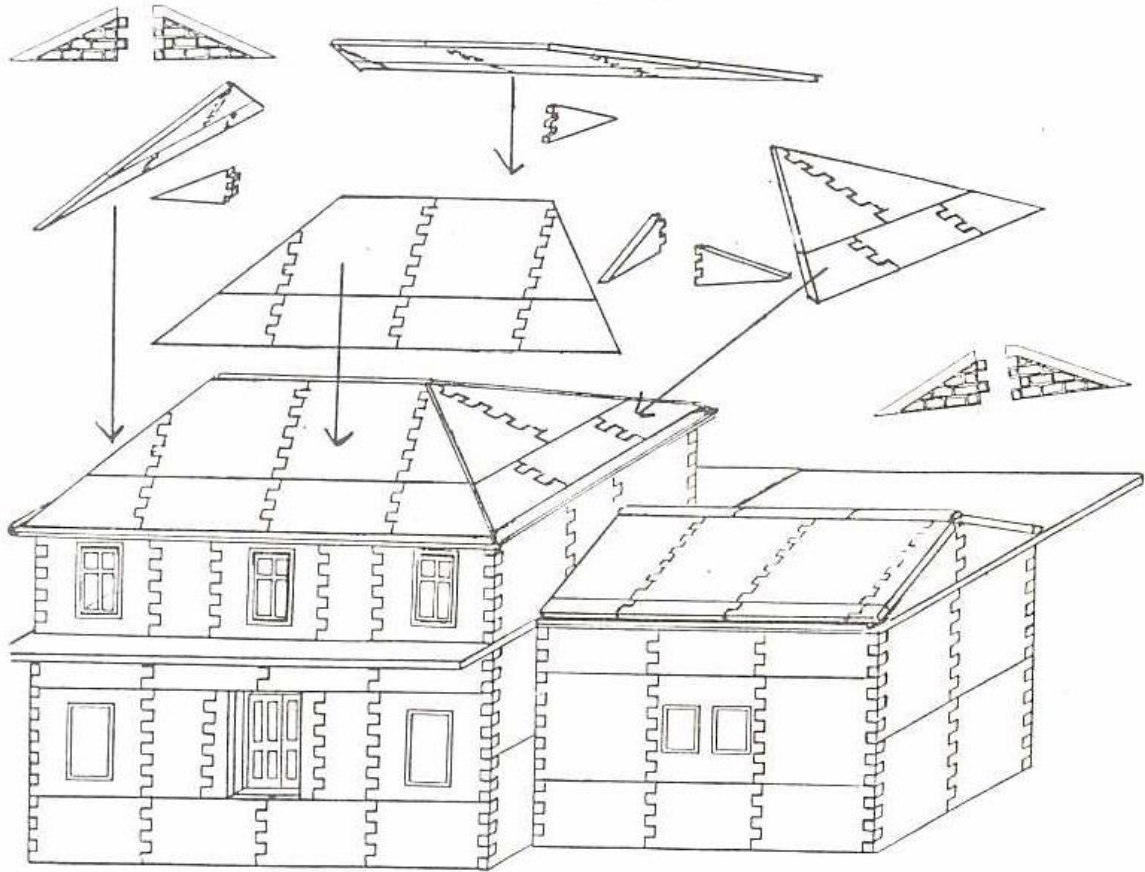
3) Glue the two side roofs together. Again, cut carefully to the angles shown below.



4) The bottom edge of each roof part needs to be chamfered to create the correct angle for gluing onto the eaves, as shown below.



5) Glue the four roof parts into place to form the hipped roof, as shown below, sanding the joins to ensure a snug fit, if needed. (You will find it helpful to glue gable parts under each roof part for extra support. This is a tricky operation! - take your time - try a 'dry' run before gluing.)

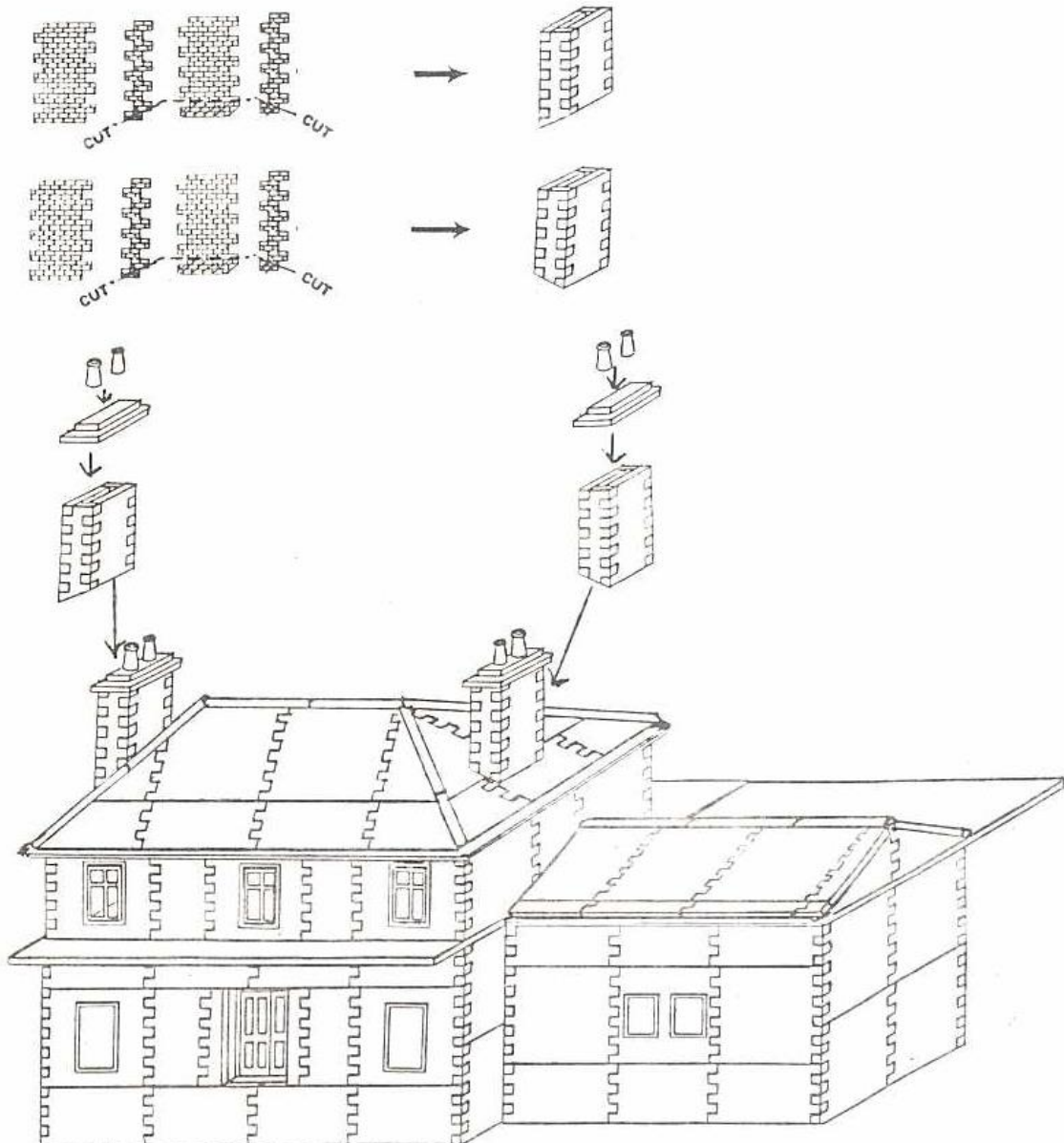


6) For this step, you will need extra half-round beading from mould B6 (no need to cast the whole mould, just the beading). Glue the beading into position at the apex and angles to form the roof ridge. If necessary, lightly sand the apex and each angle before gluing on the beading to ensure a snug fit.



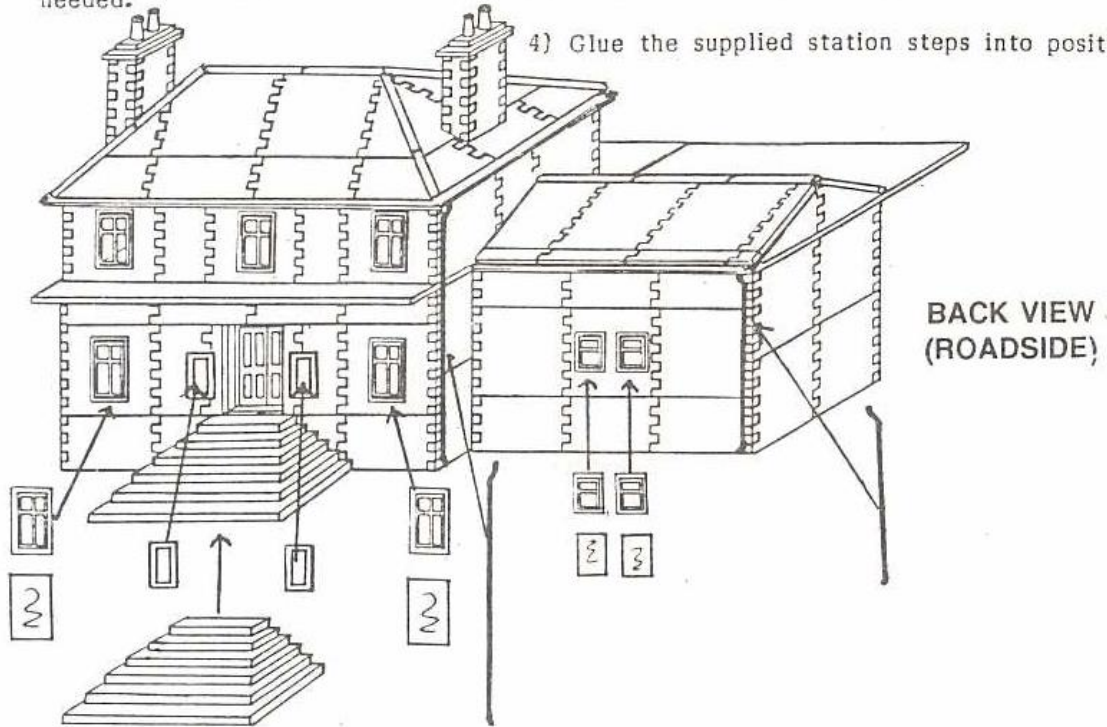
ADDING THE CHIMNEYS:

- 1) Glue each chimney stack together, cutting as shown below. The thin side strips may break during assembly, but don't worry - just continue gluing the strips into position - later painting will hide any hairline fractures.
- 2) Glue the two chimney stacks into position on the roof, sanding the angled bases if needed, to ensure a vertical stack.
- 3) Glue the two supplied stack tops into position.
- 4) Glue the four supplied chimney pots into position.

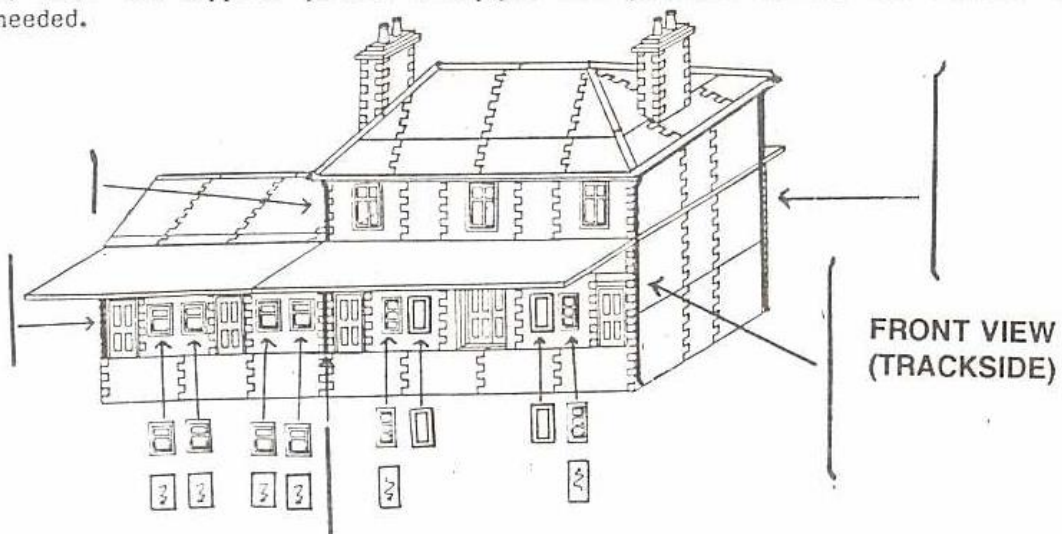


ADDING FIXTURES & FITTINGS:

- 1) Glue the supplied windows, with glazing, into position, as shown below.
- 2) Glue the two supplied metal notice boards into position, as shown below.
- 3) Glue the supplied plastic drainpipes into position, cutting and bending as needed.
- 4) Glue the supplied station steps into position.



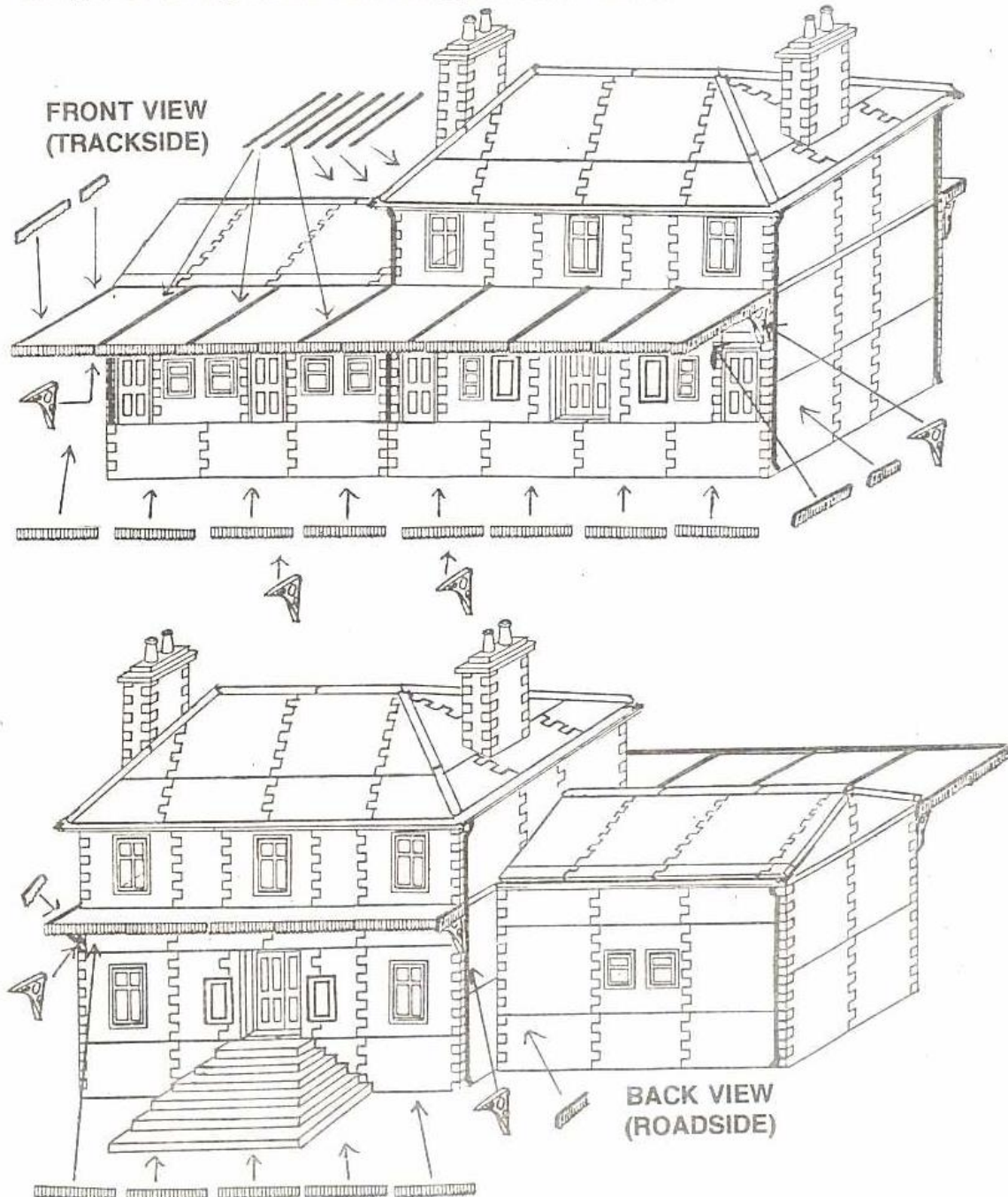
- 5) Glue the supplied windows, with glazing, into position, as shown below.
- 6) Glue the two supplied metal notice boards into position, as shown below.
- 7) Glue the supplied plastic drainpipes into position, cutting and bending as needed.



8) Glue the supplied canopy brackets into position, as shown below.

9) Glue the supplied canopy valancing into position, as shown below, cutting as needed.

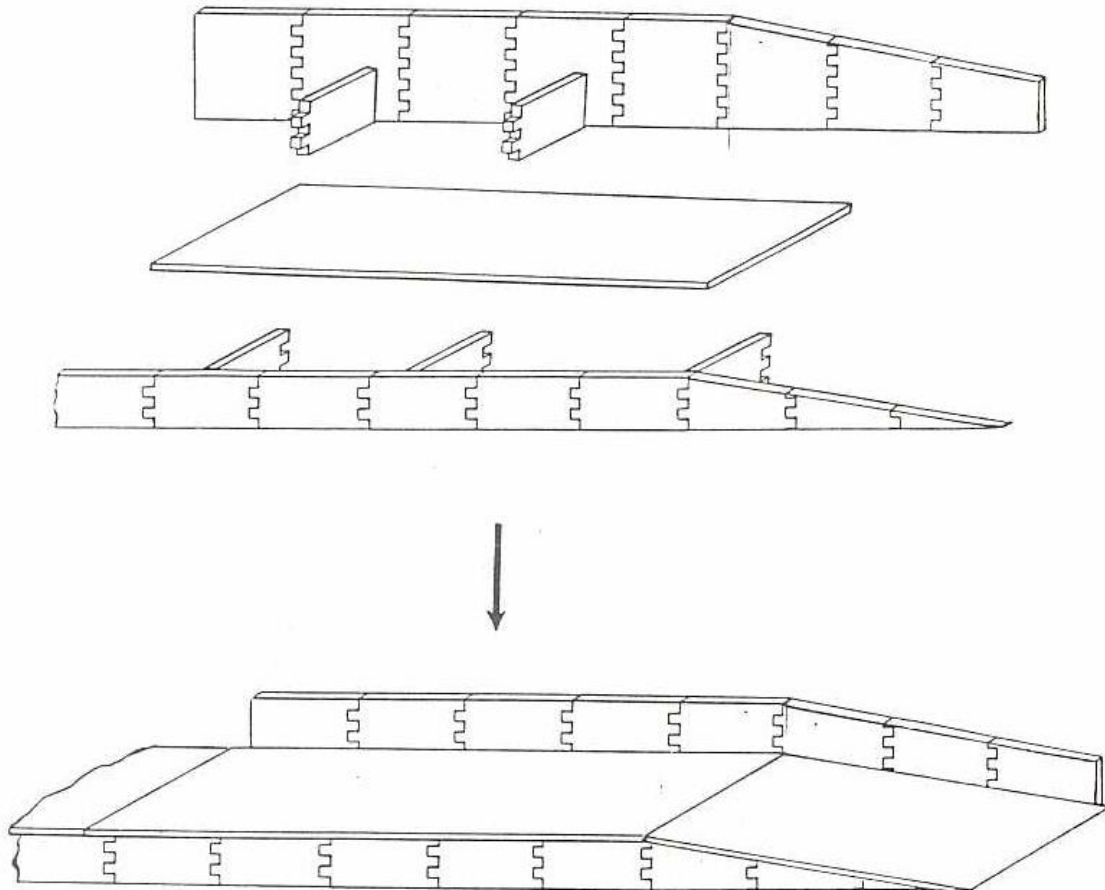
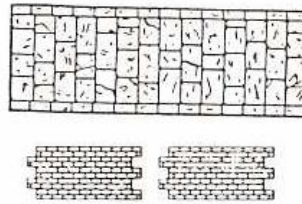
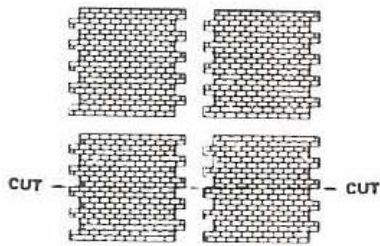
10) Glue the canopy section bars (cut from supplied black plastic drainpipe rods) into position on top of the main canopy, as shown below.



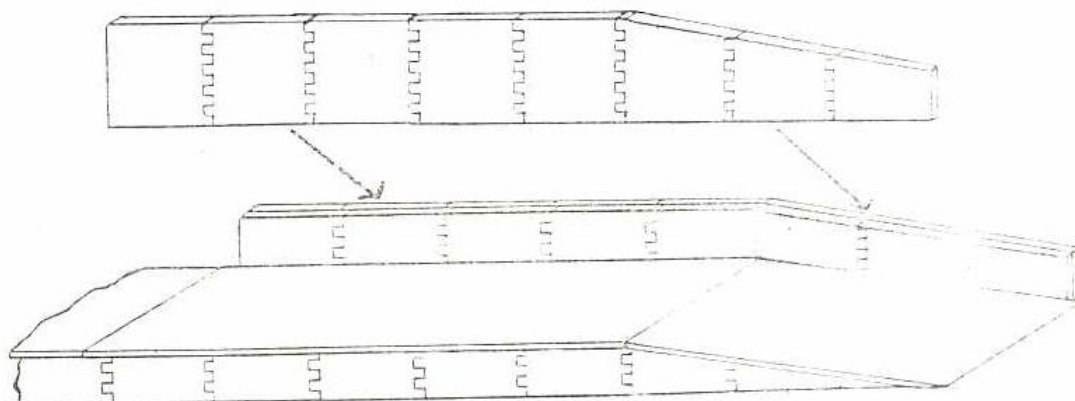
BUILDING THE PLATFORMS:

Cast the supplied special platform mould enough times to make whatever length of platform you want. The platform base is made from standard half panels, as shown below (cast and cut as many as needed).

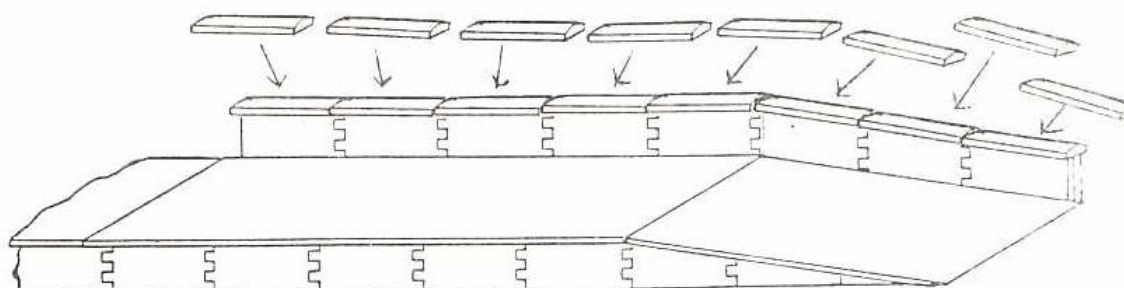
Platform ramps are formed by cutting the platform supports to an angle, as shown below.



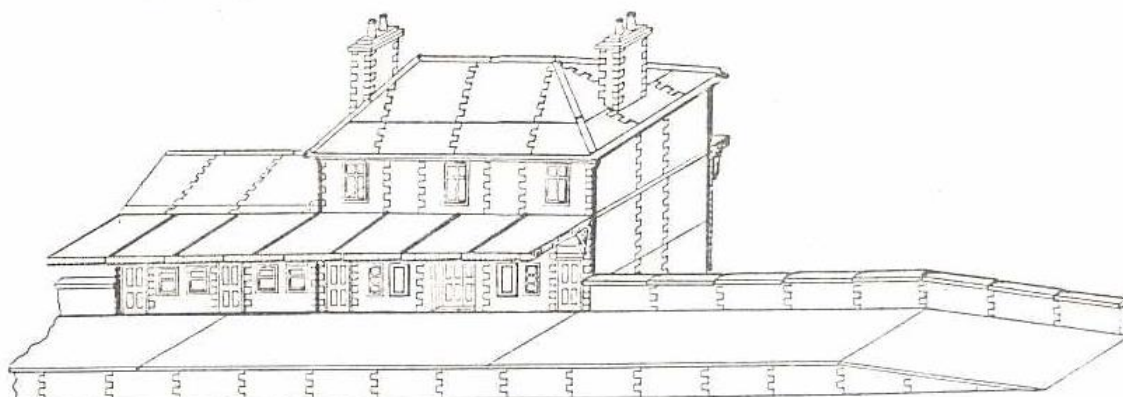
Glue on a second wall back-to-back, to give brickwork detail on both sides.



Glue on coping stones (from mould B5).



Glue completed platform into position on the station.



Special moulds for both curved platforms and shaped ramps are also available - see enclosed spares order form.

PAINING INSTRUCTIONS:

The model is now ready for painting. Many model paints can be used for painting Linka models, with pots of enamel or acrylic paints (such as "Humbrol", available from most model and craft stores) being popular. For brick and stonework, etc., use a matt paint; for doors, window frames, gutters, drainpipes, etc., use a gloss paint.

You should find the painting both interesting and straightforward, as the castings take paint well, with the crisp detail helping to guide your brush.

The exact shades and colours to be used are up to you, as brick and slate vary greatly in hue. The coloured illustration on the box shows the station in red brick, and you may choose to copy that. Alternatively, brick buildings come in many shades from brown through to red, orange, yellow, and even blue. A colour guide is included in this kit to help you choose other shades, if desired.

1) Paint all brickwork with your chosen brick colour, then the slate roof with your chosen slate colour.

2) Once this first coat of paint is dry, check the model for any gaps or ill fitting joints. Fill any gaps by making a very weak mix of Linka moulding compound (about $\frac{1}{2}$ teaspoon of compound to 3 teaspoons of water) and paint this mix into the gaps with a small paintbrush. An old toothbrush is useful for cleaning off any excess mix, as well as for cleaning out any detail that may have been inadvertently covered. Repaint with brick or slate colour as needed.

3) Choose your colour scheme for the doors and fittings. Using gloss paint, paint the doors, notice boards, valancing, gutters, and drainpipes the colour chosen. Paint the canopies matt dark grey.

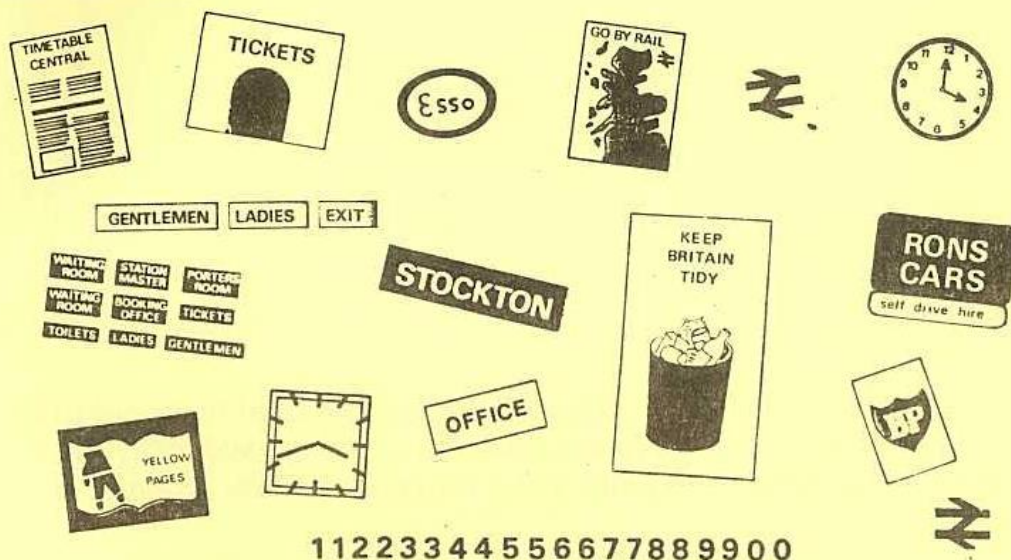
4) For greater realism, pick out various bricks in different shades. Do this by putting a small amount of your basic brick colour on your palette. Then mix in a small dab of another colour to create a different shade. Apply this shade at random to bricks around the model. Repeat this process two or three times with other shades. (Using different shades of your basic slate colour, apply the same method to the roof.)

FINISHING:

For the finishing and weathering of the model, switch to watercolour paint, in either powder, tube, or block form. With a well-diluted mix of light grey watercolour, paint the entire brickwork area; when dry, some of the paint will have collected in the mortar runs to represent cement. If it has 'greyed' the brickwork too much, sponge off the excess. Repeat with a black wash for the slate roof. This process can be repeated for heavier weathering effects, or washed off and re-applied for any change of effect.

ADDING POSTERS & SIGNS:

A range of posters and signs is included. Choose those best suited to your model; then cut out and glue into position on the station buildings and platform walls. A wide range of other posters and signs, to suit any period, is available at your local model shop.

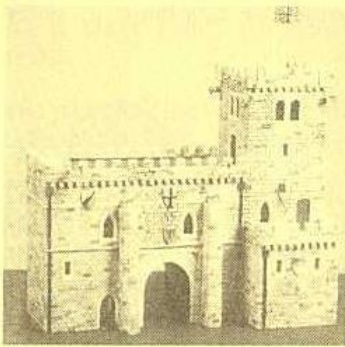


11223344556677889900

You have now completed a complex and challenging model. Well done! But why stop there? Your moulds can be used and reused to build many other models all around the railway - goods shed, signal box, engine shed, bridges - Linka can be adapted for all these things. And so much more! Whole villages. Country scenes. Castles! Whatever your ideas, take a look at Linka's catalogue (see enclosed order form). Our wide range of extra kits, moulds, and parts will make almost anything you want.



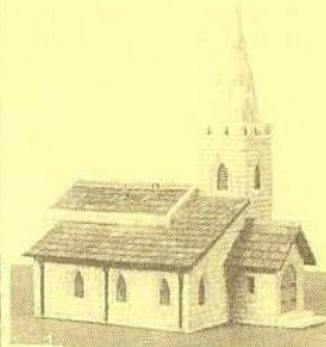
BUILDING UP YOUR LINKA



L7 GATEHOUSE

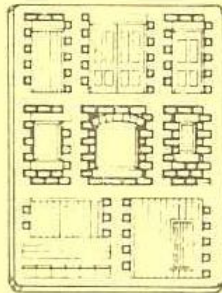


L14 CORNER SHOP

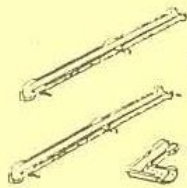


L4 VILLAGE CHURCH

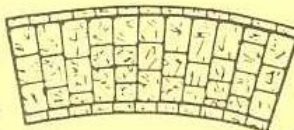
Choose any kit — the moulds can be used over and over to make dozens of different models - then add other kits, parts, or moulds, to expand your range just as far as you wish.



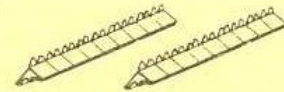
S2 Single and double doors, windows, gates & coping.



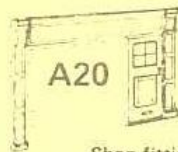
A3 Round metal guttering



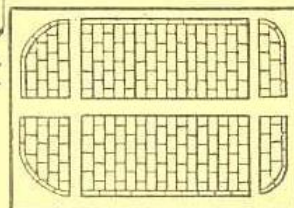
PS11 Curved Station platform



A26 Fancy Roof Ridging



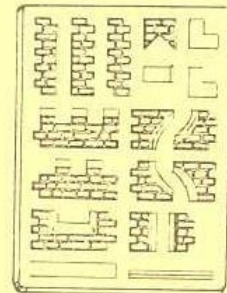
A20 Shop fittings



PS5 Pavement sections



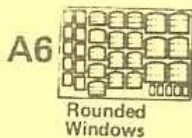
A10 Poster & Sign sheets



S5 Castellations, coping and coving, chimneys, corners and extensions.



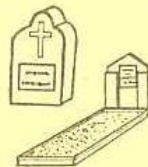
A7 Leaded House windows



A6 Rounded Windows



A18 Mixing Bowl & Measuring spoons



A28 Gravestones & Tombs (for use with L4 Church kit, etc.)

