

and although nearly all of them require Nuts to be locknuted, there is only one Spanner in Set 601, with another in #601A. The models are generally well up to standard for a set of this size and the Curved Strip with its long centre slot is an attractive part to have in some of the models. The Flanged Plate is not missed structurally but its absence does make the models more difficult to make, and card is often shown to fill in where the Plate would have been. The MARBI letters opposite are the only letters/numerals among the models. There was a separate manual supplied with the 601A Set with another 100 models in it, but no models using both sets are shown in the 601 manual. On its cover however is a large and quite complex Elevated Jib Crane, some 3ft high, an impressive MARBI supermodel.

The two models opposite are taken from the back cover where the MARBI Nr.650 C/W Motor is advertised. It is actually 6 holes long despite the 5 holes shown in the Truck illustration. Also I don't understand what is being driven by that motor because the drive shaft is always shown in the top row of holes, perhaps it can be relocated to the bottom and could then drive the Truck's back axle. The tyres shown were not in either set but could, it was suggested, be bought separately. They are referred to by a standard PN, 209/22, at one point, but as an apparent MARBI PN, 609/22, on the back cover, possibly an error.

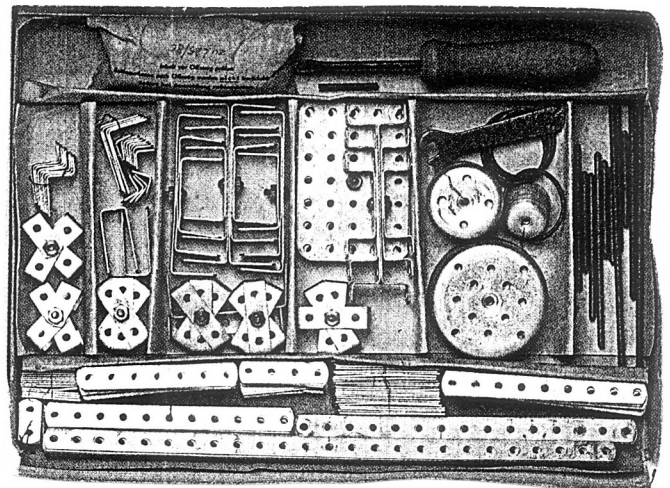
Extra MCS Sheets have been prepared for MARBI, showing the manual cover; the Illustrated Parts List and Set Contents; and a selection of models. Final thought, STABIL were selling two KNIRPS Sets in 1939, K1 and K2, which may have been MARBI competitors, and there was a KNIRPS C/W Motor of about the same size as the MARBI one: MCS has brief details but does anyone have anything on when these sets were introduced, or the set contents, the finish of the parts, etc, etc. Knirps in my prewar dictionary is said to mean mannikin, in a later one, brat.

AMENDMENTS TO INDEX IN OSN 6: dST: 4.2 DAXL: --

SUMMARY OF MANUAL #Name: MARBI. #Details of maker: GEBR. MÄRKLIN & CIE, g.m.b.H, GÖPPINGEN (Wttbg.). #Dates &/or Ref Nos: TNN 1132 fr. on IFC. #Page size: 143X199mm wide. #No of pages: 24 inc covers. #Language: German. #Printing: B&W halftone photos inc covers. #Page No of Parts List & Set Contents, & highest PN: 3,690. #Sets covered: #601. #No of models: 137 but 1-15 are std constructions. #Name, Model No, Page No of first & last model: Schraube mit Mutter and Gegenmutter, 1,4; Faßkarre, 137, 20.



EIFFEL. In BAUKLÖTZE STAUNEN, the Deutsches Museum reviewed elsewhere in this Issue, the chapter on Metal Systems contained several items new to me and one of them was EIFFEL, though it was referred to as EIFFELBAUKASTEN (EIFFEL Building Set). Apart from a good colour photo of the set (opposite) the book contains only limited information; I was going to write up what there was but then came along Part 5 with the system shown in some detail, so I'll just put down anything extra that's in the book. First though for those without Part 5, EIFFEL is a fairly simple system with 39 parts most of which are made of unfinished aluminium. There are 9 different lengths of Strip with 4.1mm holes at 12.7mm pitch and large radiused ends; otherwise just one size of Plate but numerous Brackets, DAS and Double Bent Strips of different lengths. There are no smooth rods but 5 different sizes of Screwed Rod, and the 3 diameters of Flanged Wheel are bolted to these, back to back if necessary to form Pulleys by the look of them. The thread is M4. In the BSKN photo most of the N&B have a brass look to them, as have the Screwed Rods though they look darker, corrosion perhaps. There were 2 sizes of Set, the larger with 108 Nuts (above), has twice as many of each part as the smaller. The only model shown (in MCS) is a rather rudimentary 4-4-0 loco about 13" long.



Eiffelbaukasten – ein eher universell angelegtes System

These Sets were made in Munich from the late 1930s until at least 1944, the date of the set shown here. Its box is stated to measure 33x24x3cm. There is a comment in the book that, if I've translated it properly, although metal constructional sets were very popular in the 1930s, they were not cheap and remained a dream for many, and sets like EIFFEL were an attempt to market a cheaper product.

These Sets were made in Munich from the late 1930s until at least 1944, the date of the set shown here. Its box is stated to measure 33x24x3cm. There is a comment in the book that, if I've translated it properly, although metal constructional sets were very popular in the 1930s, they were not cheap and remained a dream for many, and sets like EIFFEL were an attempt to market a cheaper product.

AMENDMENTS TO INDEX IN OSN 6: NAME: EIFFEL. TYPE: MP. CY: GG. SPCE: 12.7. dST: 4.1.

AMENDMENTS TO MCS PERIOD: From late 1930s until at least 1944.

double-decker bus - it's made of short Strips and 3h Ø Wheel Discs, the latter probably nutted to Screwed Rods as axles.

DITMAR This system from the late 1940s has small parts with 3.7mm holes at 8.5mm pitch. The Manual has only the name and Metallbaukasten on its cover; inside the text is in English, French and Spanish as well as German. The model below includes Strips from 3 to 15 holes; A/Gs 19, 23 & 35 holes long; a 3*1*3 Double Bracket; a 7*11h Perforated Plate, and a Pulley of about 50mm Ø with 6 holes in its face near the centre. The Plate and A/Gs have square corners. Again Threaded Rods seem to be used as axles although the Pulley is shown with a tapped boss. A larger model is featured on the box lid in Pl.60 of EZ and some red Circular Plates or Pulleys of perhaps 70mm Ø can be seen. The other parts shown are black but some were in fact plain aluminium.

Ditmar

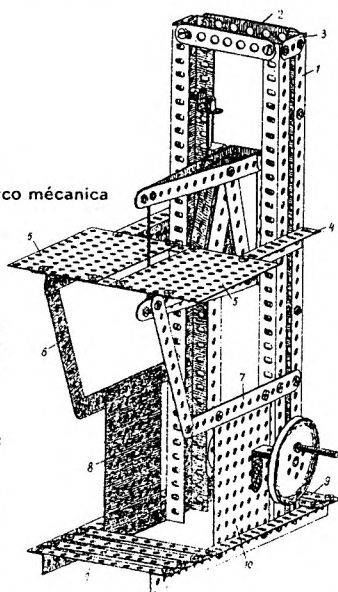
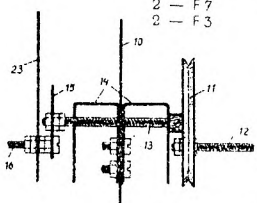
Nr. 44

Automatic bow saw

Scie en archet mécanique Sierra de arco mecánica
Mechanische Bogensäge

Construction parts:
Parts de construction:
Partes de construcción:
Bauteile:

7 - F15	4 - W35
8 - F11	2 - W23
6 - F9	2 - W19
2 - F7	8 - W1
2 - F3	2 - U5
	2 - U3
	4 - Pl
	1 - Sch 2
	1 - G6
	3 - G3
	2 - A13
	8 - St
	1 - SR 2
	58 - S1
	2 - S2
	58 - M
	5 - M5



DÖCO EZ says that this system was made by Döhle & Co., Berlin-Stralau around 1920, but no details are given.

DORANDO An architectural set from 1926 made by Mosbacher & Schönfeld of Frankfurt am Main. A photo in EZ shows black metal strips and channels bolted together to form a framework, with stone blocks as infill. They are mostly fawn with some blue uprights, and the window blocks are black with white frames and green shutters. A red tiled hipped roof sits on top - it's made from thinish material and though it looks to be in one piece, some joints would have been needed if it fitted into the box shown.

DUX AERO EZ says that this system came on the market in 1932, the probable date of the manual in 11/287.

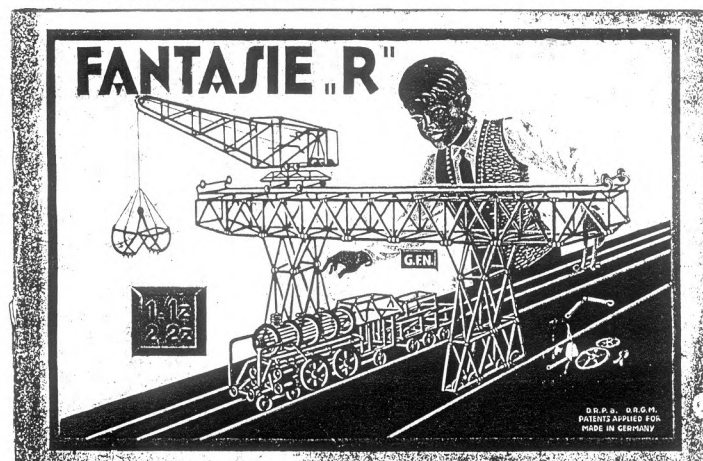
DUX-UNIVERSAL This rather unusual system is well covered in MCS and I hope to write some notes on it in a future issue. EZ mentions a February 1939 Patent No. 705732 but I'm not sure whether it was actually made before WW2. Production ceased around 1958.

EIFFEL EZ gives specific dates (see 10/247), with production between 1940 and 1948.

ELECTRIC There's an MCS entry for this system and a few further details were given in 8/183. The only mention in EZ is the dates (c1932-c1970), and the various makers after the one in MCS, as follows: from c1940, Böhmer & Helm, Meißen; in the DDR, Mewa Mesco-Werk VEB Meißen Sa.

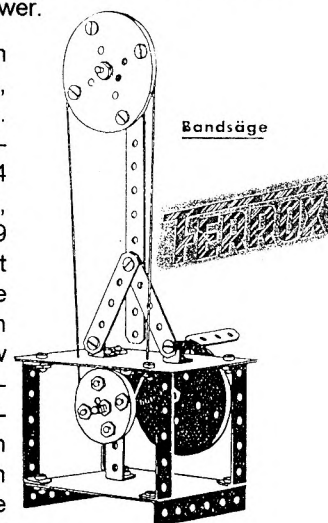
FANTASIE "R" This simple system was made by Gebr.

Fleischmann of Nürnberg, and was introduced in 1932. It was also sold under the name **ROBA**. It cost 50 Pfennig a pack and consisted of Tubes connected by (rubber?) Couplings. As can be seen, the Manual cover below boasts a quite large Crane and Loco, and has 1,1z,2 & 2z on it, presumably set numbers. EZ says there were only 29 different parts but that the Manual contained 168 models on the theme of the technical world.



F.D.K.K. Another small? system from the WW2-early '50s period. Two widths of Strips were used, 9mm and 12mm. Holes were 5mm Ø and the spacing 11.9mm. The parts were of steel with a black finish. A small photo of a box lid in EZ shows the top of a large Tower.

FERROX Another small system from the late 40s to early 50s, with 4.1mm holes at 12mm pitch. There were about 20 parts including Strips of 2,3,5,7,11 & 14 holes; 1*3*1 & 1*5*1 DAS; 1*1, 1*3, & 2*1*2 Brackets; 17,36 & 69 mm Discs; and 2 Plates, one flat and one flanged. The flanges are always shown with 6 holes in them, but otherwise only a few holes are indicated, and their position varies in the different models. Note the 'extra' hole that can be seen near the centre of both the large and small Discs in the Bandsaw opposite; also the ends of the Strips, Brackets, etc with angled corners, like **VOGUE**. Again Threaded Rods were used as axles. Some parts were aluminium and the others were red, green, or black.



1 Grundplatte, gerade
1 Grundplatte, gebogen
1 Traverse 11 Loch
2 Traversen 5 Loch
1 Traverse 3 Loch
4 Winkeltraversen 1x5x1
2 Winkel 1x3
3 Winkel 1x1
2 Lagergabeln 2x1x2
3 Scheiben 60 mm
3 Scheiben 36 mm
1 Welle 80 mm, 1 Welle 40 mm
26 Schrauben, 36 Muttern

FIX Another little system, in this case made by MWK of Kitzingen/Main. A date of 1948 is known, and EZ gives production as around 1940. There were less than 30 parts but they were rather unusual. There were 2 types of Strips. One that I'll call a Linked Strip had 2,3 or 4 strips joined together with eyelets, so that the elements could rotate relative to one another. The elements were equivalent in length to strips 3,4,5 & 8 holes long but each had only the end and one centre holes. The ends of the strips are shown rounded. There were 12 different Linked Strips, as shown - they ranged from 2x3h strips to a 3+4+5 which can be seen forming the triangular frame at the lefthand end of the Signal in the next column.

The 'ordinary' type of Strip again had only a centre hole plus rectangular end holes that extended out to the square

An EIFFEL Manual Something on this small German system with aluminium parts was given in 10/247. Now a little more, mainly from scans of a manual kindly sent by Urs Flammer, but also from some sets seen on Ebay. EIFFEL was made by Dietze & Wieland of Munich 13. The dates for the firm in Baukästen are 1940-48, with c.1944 for EIFFEL itself. Eisenzeit gives 1940-48 for the latter. There were 2 sets, a Normal & a Doppel.

The Manual has 36 pages a little smaller than A4 (the same size as the lid label, Fig.1),



Fig.2

and p1 is shown left. It may though have had outer covers with the front identical to the lid label – as do 3 of the 5 manuals of this type seen on Ebay. p2 has the Manual's contents, and p3 a Forward which says that the models through p25 can be made with the Normal set, the rest with the Doppel (Double). p4 has a photo of Doppel set, as in Fig.1 & 10/247, though with the parts in the various compartments arranged somewhat differently. All the manual's illustrations are good quality photos. p5 has 'EIFFEL' made with Strips etc. The parts are listed on p6, with the quantities in the 2 sets, and they are illustrated on p7. pp8 & 10 have constructional hints referring to photos on pp9 & 11. pp12-25 show 12 Normal models from Schubkarren (Wheelbarrow) to the Auto shown below on pp24-25. pp26 have 7 Doppel models from Stellwerk (Signal Box, with a signal gantry) to Loco-

Wagon, a Bridge, a Scooter, & the Auto in Figs.4a & b.

The Doppel models are even better, with a Windmill, Eiffel Tower, Big Wheel, the Water Wheel with double trip hammers in Figs.3a & b, a 4-4-0 Loco, and a Lorry with a slightly different version of the 'Ackermann' steering in Fig.4.

The photos of the models below are only a fraction of their original size but I think all the details can be seen with a magnifying glass.

Another Manual One Ebay manual has the same text on the title page as Fig.2 but rearranged & with EIFFEL straight & not curved. It was with a Normal set and probably contains only the Normal models. As seen it had no outer covers.

The Sets The boxes measure about 31*20*2³/₄ & 34*24*2³/₄cm but are otherwise very similar with the same label & pattern of partitioning.

The contents of the **Normal Set** are: 4x #1, Rev. A/B 2*1*1h. 4,1x #2,8, D/B 2*1*1, 3*1*3h. 2,6x #3,4 A/B 3*2, 1*1h. 2,3,2,6 #5-7,9, DAS 2*7,5,3*2, 1*3*1h. 1,1,1x #10-12, Dble. Bent Strip 1*1*7,5,3 *1*1h. 54x #13, hex Nut. 5x #14, Full Nut. 30,14x #15,16, RH Bolt, 6,10mm. 2x #17 Perf. Plate 7*5h. 6,8,8,12,8,8,4,4,4x #18-26, Strip 3,4,5,7,9,11,15,25h. 1x #27 Spring Cord. 4,4,4x #28-30, Pulley Disc 62,42,24mm Ø. 1,2,2,1,1x #32-36, Screwed Rod 30,52,76, 100,140mm. 2x #37 Spanner. 1x #38 Screw-driver. 1x #39 Manual.

(All holes are round & the thread is M4. The Full Nut (Hohe Sechskantmutter) is called up for many of the models but I can't see it in them to say why it is needed.)

The **Doppel Set** has twice the quantity of parts #1-37, and 1 each of #38 & 39.

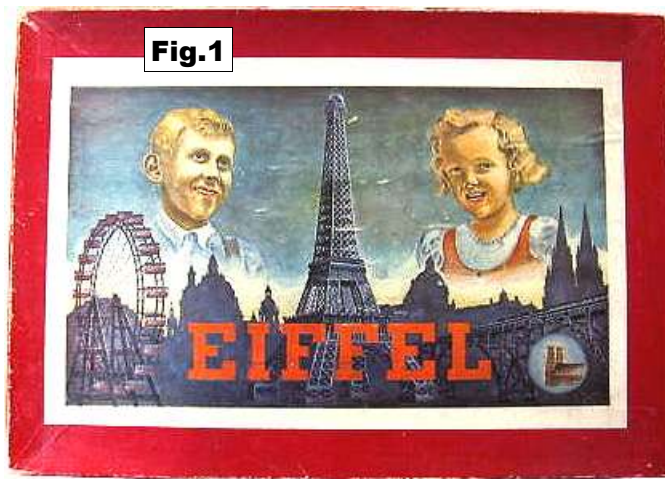


Fig.1

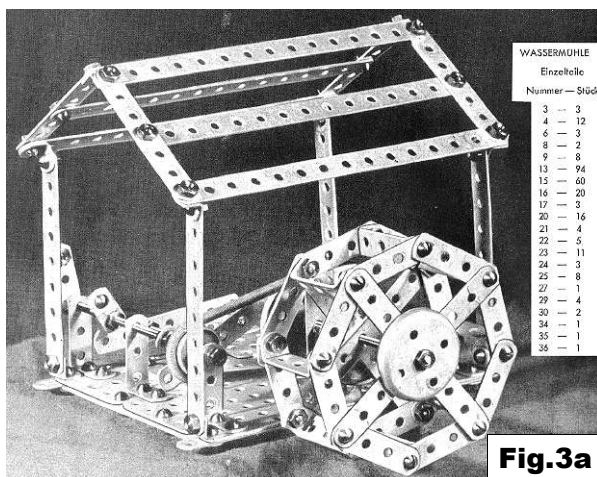


Fig.3a

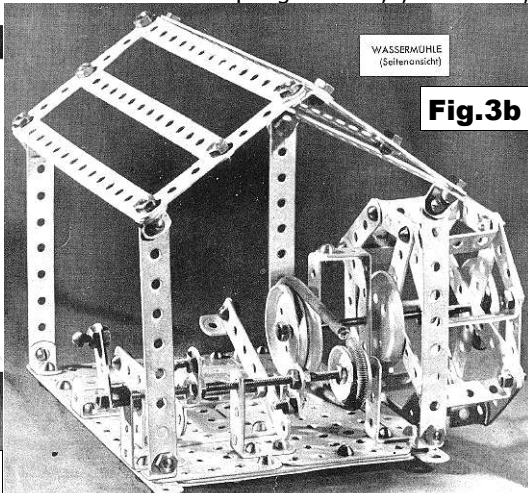


Fig.3b

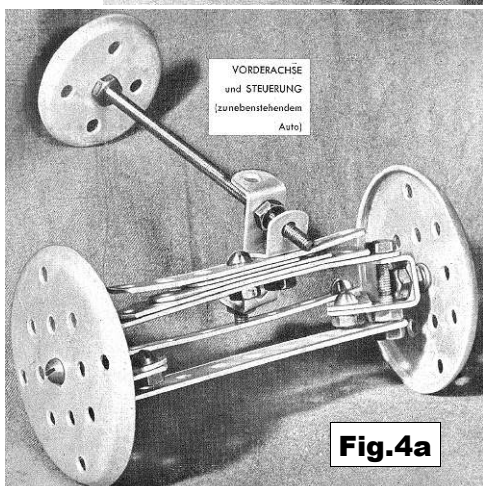


Fig.4a

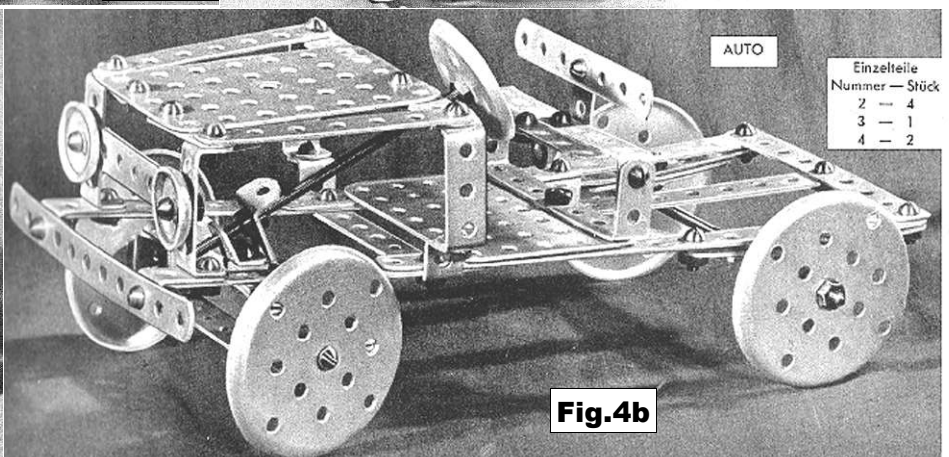


Fig.4b