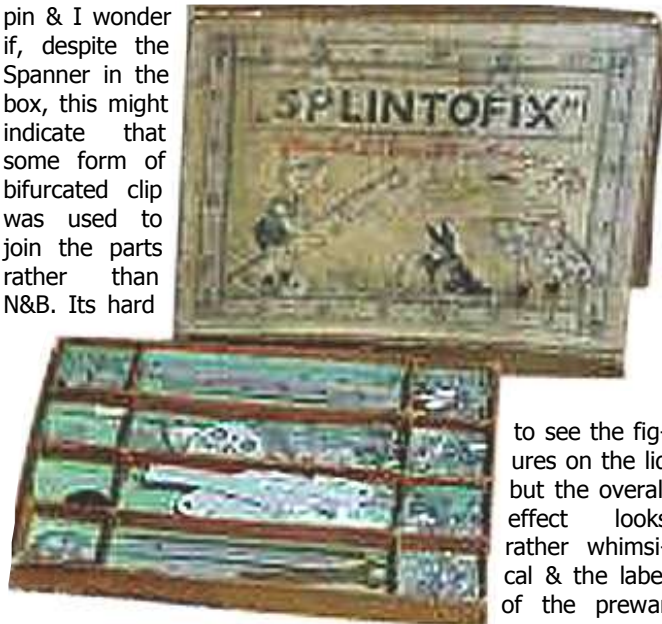


pin & I wonder if, despite the Spanner in the box, this might indicate that some form of bifurcated clip was used to join the parts rather than N&B. Its hard



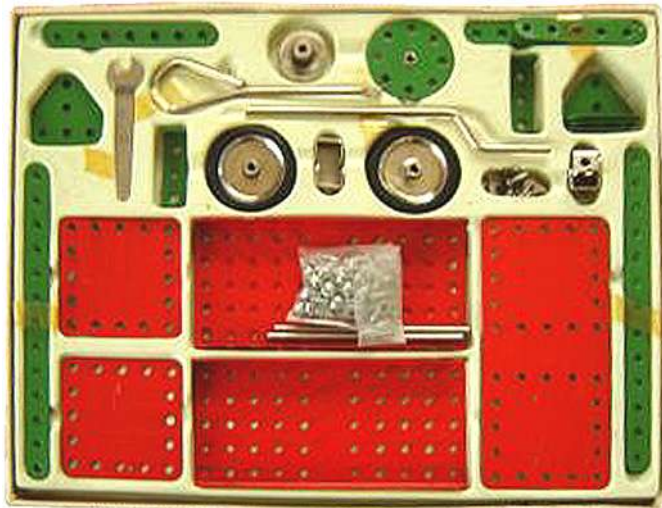
to see the figures on the lid but the overall effect looks rather whimsical & the label of the prewar ELECTRIC set

comes to mind (see 26/750).

**SPLINTOFIX: S1**

[36/1070]

4. **Snippet. 'New' System: MECA** The Ebay write up said that this set was made in Mexico by a company called Disa, and that the manual has 9 pages. As can be seen from the lid right the MECA·NO 2 could easily be read



as MECA·NO 2, and the 4 models shown above look to be taken directly from MECCANO manuals. The latest, the Milk Delivery Wagon, bottom left, was a No.2 model which first

appeared in 1954. Not all the parts that can be seen in the box match MECCANO exactly: the Trunnions have no cutouts; the 5\*11h Flanged Plate at bottom centre has no end flanges, and no holes in the centre '5 hole' row; the Plate above it looks similar but 2 such in a small set would be unusual; the 5\*11h (Flexible?) Plate to the right has a 5h square of holes at each end; and the green Strips at either side look to be 13h long.

**MECA: S1**

[36/1070]

4. **Snippet: LITTLE GIANT MODEL MAKER** The Tool from this American DIY system was shown in 21/603 and last year the set below was sold on Ebay. The words under 'Boys' on the lid are 'MAKE YOUR OWN CONSTRUCTION SETS', and the panels at the bottom are no doubt parts of a deep lid apron. The Tool is red and is mounted on a wooden base. The rod at right angles to the Tool's handle looks quite substantial and is perhaps a gauge bar rather than constructional material. I'm



not sure what the blue part between the Pulleys is.

**LITTLE GIANT: S1**

[36/1070]

6. **Snippet. 'New' System: METALL-BAUKASTEN** Below the lid, and in the Ebay photo it was surrounded by a large number of various parts. Most were shiny and probably MFA/MFC. Also several dull grey parts, probably TRIX. Finally a few rusty, ordinary looking parts, from the Set perhaps: 5, 7 & 11h Strips, 1\*5\*1h DAS, & two 2h Ø Fast Pulleys. Scaling from the Strips, the box would be a little longer than the 11h.



**METALL-BAUKASTEN [5]: S1**

[36/1070]

6. **Snippet. CORUS** The Window panel right (upside down) was in an Ebay lot of loose CORUS parts. It is a type of window not seen before as an actual part but it was used in the manual model House shown in 32/946. The parts were said to be the remains of a No.00 outfit, but the Window panel and some of the other pieces were probably from a larger set.



**CORUS: S3**

[36/1070]

4. **Snippet. CUB BUILDERS** This small American system with aluminium parts, including several Flanged & Channel Plates, was described in 28/838 and it was thought to date from soon after WW2. This has been largely confirmed by a CUB Model Sheet which was found in a file marked with the year '1946'.

**CUB BUILDERS S3**

[42/1261]

5. **Snippet. More on METALL-BAUKASTEN [5]** A little on this small German system was given in 36/1070 and now Jan Ringnalda has send the much better photos below from an Ebay item. The box was said to measure 200\*100\*27mm but from the photos the 100:200 ratio is incorrect. Some of the parts in the box are obviously from a 'Matchbox' set and scaling from them gives the 200mm dimension but the other is about 150mm. Then scaling the Strips & Flanged Plates gives



their hole pitch as about 13mm, so possibly that figure or 1/2". Looking at the OSN 36 parts again there are a few Strips among them that match the colour of the present ones (not the rusty ones mooted as possibles before). So are the non-Matchbox parts in this set genuine? Quite likely I suppose, though the Plates on top of the towers in the Bridge on the lid are shown as having 5\*4h.

**METALL-BAUKASTEN [5] S2**

[42/1261]

6. **Snippets. ANKER** The cardboard lid from a Richter ANKER set was shown in 38/1134 and the Ebay photo below is



of an outfit in a wooden box. The top of its lid wasn't shown but the manual cover resting against its underside is of a similar design to the OSN 38 lid label.

As can be seen the different types of part include various lengths of Strip, the longest probably 25h; some Brackets; 5\*11h & 3\*5h Plates (the former not fully perforated); a 5h Ø Disc; a 1 1/2h Ø Pulley, probably aluminium; Rods, most likely fully or partially threaded; and a Crank Handle which probably has a threaded end. The 3\*5h Plate and the Pulley can be seen among the parts (a mix from several systems) that were with the OSN 38 lid.

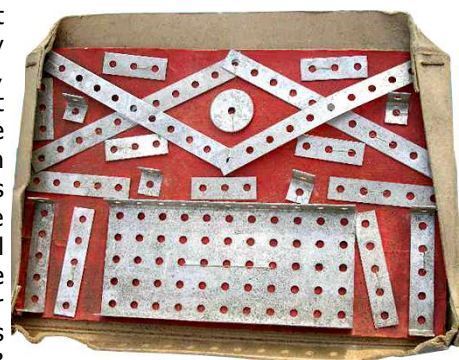
A second set is in a cardboard box with a lid label identical to the OSN 38 one. Most of the parts mentioned above can be seen including the 5\*11h Plate, and it has only the edge & centre line holes. Also in the box are 2 Winding Drums which may not be original because they look exactly like those in the METALL-BAUKASTEN set described in 28/820 & 34/1035. The size of the box was given as 32.5\*16\*3cm and scaling from that gives a hole pitch of 12.5mm, so certainly near 1/2".

**ANKER [2]: S2**

[42/1261]

**7. Snippet. A METAL CONSTRUCTION and BUILDING OUTFIT**

The Ebay set right has a box 11\*7", very slightly larger than the one in 35/1037, but with the same label except that it has a narrow outside orange border. Compared with the earlier outfit this one has no 5\*5h Plate and neither the Span'driver, nor the small Pulley? Wheel (between the Discs), can be seen. Another very noticeable difference is that all the Strips and the A/B have square corners. The quantities of the Disc & Strips cannot be compared because the Discs in this set, and the Strips in the OSN 35 outfit are probably stacked.



**METAL CONSTRUCTION and BUILDING OUTFIT: S2**

[42/1261]

**OSN Subscription Rates** The price per Issue, including postage, at Printed Paper Rate where available, is £5.50 for UK; £6 by air to Europe & surface anywhere; £6.50 by air outside Europe. **Back Issues** For the zones above : OSN 1: £1/£1.30/ £1.50; OSN 2,3: £2.30/£2.70/£2.90 each; OSN 4-27: £3.60/£4.10/£4.50 each; OSN 28 on (in colour): £6/£6.50/£7. (All colour & some B&W issues are on loose sheets.)

**Payments** Please make cheques etc payable to P.A.Knowles. Remittances must be in Pounds Sterling (GBP) or, as cash, in Euros or US Dollars (£1=€1.10=\$1.50). Payments from overseas may also be made using PayPal (in Sterling please).

**Small Ads** Short ads are free to subscribers; insertion guaranteed in OSN 43 if received by mid-August (but repeats may not always be possible, please ask).

**OSN – Your Credit Balance:**

was £ after OSN 41  
was £ after your remittance of £  
is £ after this Issue

Please send at least £ if you wish to receive the next Issue.

5. **'Matchbox' Set Parts.** Jean-Pierre Guibert sent details of the key dimensions of the parts in his 2 CLOU matchbox sets & a Louis Marx MATCHBOX set. That's to say the pitch & diameter of the holes in the 5h Strip, the diameter of the bore in the wooden Pulleys, & the diameter of the wooden Rods/Axles). He found that they are the same for each brand and that they differ from those in the Database.

The latter were based on the values in MCS and those of the parts in sets which I had on loan at the time. In the light of J-P's results I measured the parts in the sets currently to hand, a CLOU, a Louis Marx, & a Linemar MATCHBOX. (Notes on the different 'Matchbox' sets were given in 6/131 – MCB2 there is the Louis Marx.)

Below the measurements in millimetres (m = mean value).

Set ↓	Pitch	Hole Ø	Bore	Axle Ø
CLOU Database	8.6	3.2	2.9m	3.0m
CLOU J-P	8.5	3,15	3.0	3.0m
CLOU Mine	8.7	3.15	3.0	2.9m
Marx Database	8.7	3.3m	3.0	3.0
Marx J-P	8.5	3.15	3.0	3.0m
Marx Mine	8.75	3.4	2.9	3.0m
Linemar Database	8.7	3.4m	3.3m	3.1m
Linemar mine	8.75	3.3	3.3	3.2m

Many of the Axles vary slightly in diameter along their length and/or are significantly oval in section. My Marx Axle can push into the Pulley (actually a Wheel because it doesn't have a pulley groove) because its wood is very soft and fibrous.

Given that care was taken to make the measurements as accurate as possible there are clear differences in the metal parts. Especially noteworthy are the different pitches within the

CLOU sets, and the different pitches & hole diameters within the Marx. Presumably they would have been due to different tooling, though whether by the same manufacturer (or subcontractor) one can't say.

And in case you wondered, the pitch of the holes in the other parts matched those in the Strips.

**MATCHBOX SETS: S2** [46/1389]

6. **STABIL** Werner Sticht continues to add to his STABIL website, [www.stabilbaukasten.de.vu](http://www.stabilbaukasten.de.vu). Click on "Neuigkeiten" (= news) and you will find links to • STABIL before 1912; • other early German systems plus details of MÄRKLIN, TRIX, & MECCANO in Germany; • and detailed accounts of STABIL Pulleys & Flanged Wheels.

In addition the 'News' section has links to updates on 1911-1912 toy trade catalogues, on the 'Eisenbahnwagen-Baukasten', and on the wooden 'Maschinen-Baukasten'. There are also links to the numerous Änderungen und Korrekturen (Changes & Corrections) throughout the site.

**STABIL: S8** [46/1389]

7. **VEX** The high shipping cost of VEX items bought from the firm in America was mentioned in 41/1253. Now the company's website, [www.vexrobotics.com](http://www.vexrobotics.com), says that most products can be shipped from England, but I wasn't able to check any actual shipping costs.

Also on the site, a list of resellers, among them 3 in the UK: one in Malmesbury, Wiltshire; one in Radstock, Somerset; and the third in Brentford, Middlesex.

**VEX: S5** [46/1389]

**METALL-BAUKASTEN** Following the note on Jan Ringnalda's set in 42/1621, Jean-Paul Guibert has kindly supplied details of his set, including the photos shown here. The box is the same but the set is much more complete and all the parts in it are thought to be original.

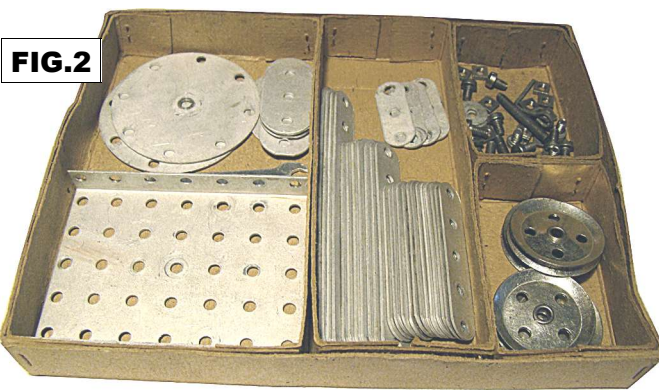
In all it contains 15 types of part as follows: 3,5,7,9h Strips; a 3h Strip almost twice as wide as the standard Strip; a 5\*7h Flanged Plate; a 5h Ø Circular Plate; a 3h Ø Pulley; a Spanner or Span'driver (partly covered by the top edge of the Flanged Plate); & in the top right compartment, enlarged right: a Washer; a wire Handle Crank; a short Screwed Rod,



a square Nut, & 2 lengths of cheeseheaded Bolt.

The main parts are aluminium with 4.1mm Ø holes at 13.0mm pitch. The N&B, etc look nickelled; also the Pulley – it looked aluminium in Jan's set.

A great many 9h Strips would be needed to make the Bridge on the lid.



OSN 46/1389

METALL-BAUKASTEN [5]: S3

**OSN Subscription Rates** The price per Issue, including postage, at Printed Paper Rate where available, is £6.50 for UK; £8 by air to Europe & surface anywhere; £9 by air outside Europe. **Back Issues** For the zones above : OSN 1: £1.50/£4/£5; OSN 2,3: £3.50/£5.50/£6.50 each; OSN 4-27: £5/£7/£8.50 each; OSN 28 on: £7/£8.50/£9.50. (All colour & some B&W issues are on loose sheets.) Postage at cost on multiple orders.

**Payments** Please make cheques etc payable to P.A.Knowles. Remittances must be in Pounds Sterling (GBP) or, as cash, in Euros or US Dollars (£1=€1.10=\$1.50). Payments from overseas may also be made using PayPal (in Sterling please).

**Small Ads** Short ads are free to subscribers; insertion in the OSN 47 guaranteed if at all feasible (but repeats may not always be possible, please ask).

**OSN – Your Credit Balance:**

was £	after OSN 45
was £	after your remittance of £
is £	after this Issue
Please send at least £	if you wish to receive the next Issue.

**THIS NEWSLETTER IS SUPPLIED ON THE UNDERSTANDING THAT IT IS FOR THE PERSONAL USE OF THE RECIPIENT FOR RESEARCH PURPOSES ONLY**

**EDITORIAL** Changes are afoot. PDF files will be well known to most readers and I've been thinking that it would be a good idea to send out OSN articles directly to subscribers in this format. Doing so would eliminate postal charges and anyone using this method would simply pay an annual subscription of £5 to cover my incidental expenses. Articles would be sent as soon as they are ready rather than every 6 months or so & could be printed off by the recipient, single- or double-sided, or simply stored as files. Another advantage is that this method would allow more pages of information such as Set Contents, Illustrated Parts, etc without the constraints of 32 page Issues.

To allow recipients to keep track of the 'new pages' they will simply have page numbers following on from the last page of this Issue, plus the month & year it was sent out.

Please let me know if you would like to change to this method, and I hope as many as possible will do so as it will simplify matters at this end. I expect most readers will have the PDF software already but if not it can be downloaded free & if required I can give details. It will be at least 2 months before anything is sent out under this system & that will allow me to answer queries & find solutions to any problems.

Anyone who cannot adopt this change can of course continue to subscribe as at present and I will send out batches of pages when I have approximately 32 on hand.

### Shorter NOTES, with thanks to all contributors.

1. **METALL-BAUKASTEN [5] - Correction.** On p1389 of OSN 46 some words were omitted at the end of the second paragraph in some copies. They followed 'a short Screwed Rod' and are as follows: 'a square Nut, & 2 lengths of cheeseheaded Bolt.'

#### METALL-BAUKASTEN [5]: S4

[47/1420]

2. **A Large BILDICO Outfit.** Paul Goodman has found one of the very hard-to-find BILDICO sets, see 46/1413, full of parts and perhaps complete. Its box is in the same style as the No.4 in OSN 46, black outside & green inside, but larger, the same width but 6cm more in breadth, with 3 extra compartments across the bottom of the box for Strips & Clips.



So, most likely a No.5, the largest set in the range (the 'sets 0-6 in the BILDICO para in 46/1415 should have read 'sets 0-5'). The Set has the same quantity of Wheels as the No.4 except 8 instead of 6 Loose Pulleys, and has the same green Cord. The lid label above, the same size as the No.4's, is as would be expected but the manual is like the 'earlier' of the two EREKTIT ones described in OSN 46 (with the 46/Fig.E front cover) but with the word EREKTIT replaced by BILDICO throughout.

This set's manual lends support to BILDICO having been introduced alongside or soon after EREKTIT. The BILDICO manual shown in MCS appears to be as Paul's but with the last page replaced with the price list of parts without its EREKTIT name being changed – probably hastily during WW1.

#### EREKTIT: S5

[47/1420]

### 3. 'New' Dutch System: NAME

NAME probably means Special, and below, Marktplaats photos of a set showing the lid (with the name on it enlarged here top right), the box's base, and a tray of parts. These notes are based on this set, and a few 'mystery' parts to hand which can now be clearly identified as NAME. They were given to me some 30 years ago by Bert Love who had been sent them by a Dutch enthusiast, Dr. Boerdijk, in the hope that they could be identified. Keep a thing long enough .....



FIG.1

FIG.2

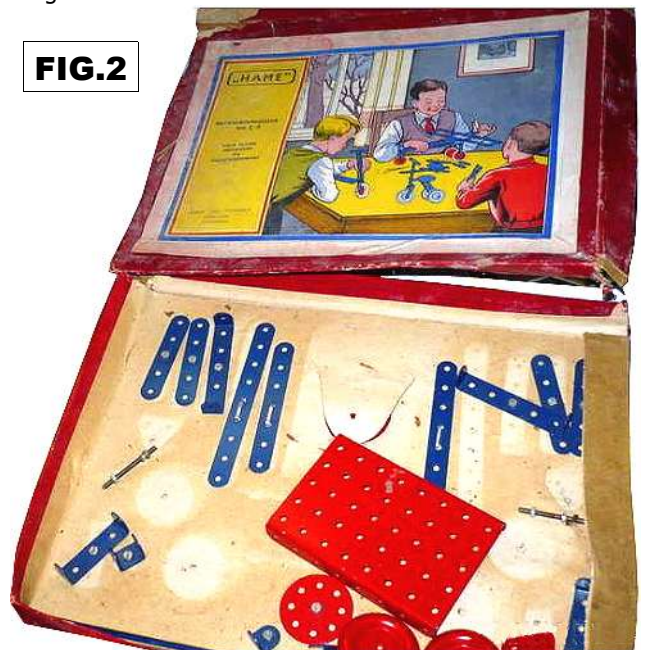
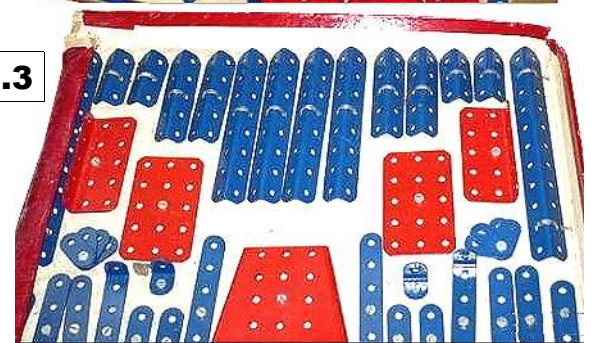


FIG.3



The 4 parts to hand are a 9h Strip, an 11h Strip, a 1\*3\*1h DAS, & a 5\*8h Flanged Plate. All but the 11h Strip can be seen in the Set. Holes are 3.4mm Ø at 13.5mm pitch (but 13.4mm in the Flanged Plate). All the holes are round, as are all that can be seen in the Set. The Strips are 13mm wide but the DAS, 12½mm.

In total the 23 different parts that can be identified are: 2, 3 (probably), 5, 7, 9, 11h Strips; 3, 5, 7, 11h A/Gs; an A/B & a D/B; 1\*3\*1 & 1\*5\*1h DAS; a 5\*8h Flanged Plate & a Flanged (probably) Sector Plate; a 3\*5h Perf. Plate; a 5h long Girder Bracket; a Wheel Disc; a Road Wheel; a Screwed Rod about 40mm long; a cheeseheaded? Bolt (holding some of the parts down), & a small Hexagonal Nut (on the Screwed Rods).

#### NAME: S1

[47/1420]