

Snippet. 'New' System: STRUCTAL-AUTO As will appear STRUCTAL-AUTO was very similar, perhaps identical in many respects, to AUTO-CYCLE (see 32/954), but how it relates to it in terms of date isn't clear. The Ebay photos show a normal AUTO-CYCLE Motorcycle & Sidecar model, as in 32/956, and a fold-up STRUCTAL-AUTO model leaflet. The latter features the Motorcycle & Sidecar, an Auto, and a Monoplane. The last two models both use the Sidecar Body and both differ from those in known AUTO-CYCLE manuals, particularly the Auto. And in all three the Sidecar Body has more pointed ends than in the Model. The Petrol Tank panel in the photos of the Motorcycle model can be seen to be stamped 'AUTO-CYCLE PARIS' in the normal way, and assuming the model was made from a STRUCTAL-AUTO set, it largely proves an AUTO-CYCLE connection.

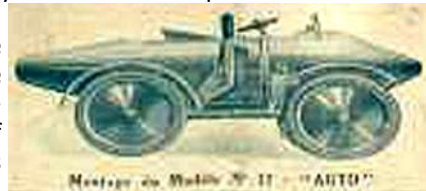


The Leaflet has 5 panels on each side, and above its front. The words underlined on it mean: Constructional Sets; Built-up Models; Separate Parts. The address of the factory & offices is given towards the bottom as 16 rue d'Aguesseau, Boulogne sur Seine, printed on what might be a stuck-on label. The H.W.PORRET name at the bottom could possibly be the wholesaler. The back of the folded Leaflet is blank except for JOUETS STRUCTAL-AUTO and some small print at the bottom.

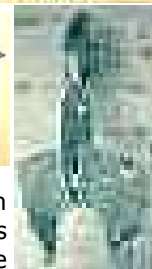
One of the other 8 panels one is covered in text, possibly an introduction and general building instructions. Each model occupies 2 panels with a general view of it, what looks like a list of the parts with their prices, and some auxiliary views with PNs which would allow the model to be built. The presentation of the models is quite unlike that in the AUTO-CYCLE manuals.

The final panel probably shows & lists the parts in the Motor.

In the Auto, right, the Motor drives the front Wheels and the steering wheel is ornamental. It's not clear if the side lever controls the Motor.



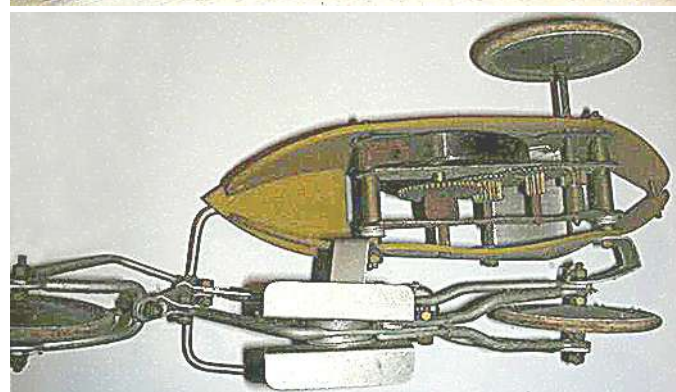
The photos, right, of the Monoplane and its tail subassembly are poor but it can be seen that the tailwheel sits behind the end of the fuselage (at the top in both photos), a position not seen in the AUTO-CYCLE models. It is supported by structure seemingly attached to the Tailplane, and the Tailplane itself with its tapered planform, has a deeper U-cutout than the version in 35/1045.



The pointed Sidecar Body can be seen clearly in the Auto and the shape of the ends is so pronounced that if it is actually the AUTO-CYCLE part, a considerable degree of artistic licence has been used.

History Boulogne sur Seine was the name of a Paris suburb until 1924 when it was joined with Billancourt as Boulogne-Billancourt. So unless the old name was still being used, the Leaflet is from 1924 or earlier (though the Ebay ad gave a date of c1925-27). A pointer to earlier might be the possible stuck-on address label mentioned earlier, unless of course it was simply to cover a mistake.

Snippet. An AUTO-CYCLE Sicalite Sidecar Below a sidecar made of the Sicalite plastic parts which were mentioned in 32/955. The Side Panels are attached to the Motor by Nuts on the ends of the Screwed Rods which hold the Motor Sideplates together, and then the Top Panels & (aluminium)



Seat are added (though as can be seen in the lower photo, the Rear Top Panel is missing). It's not clear from the photos how the Top Panels are attached. The ends of the Side Panels are pulled together by shorter Screwed Rods but the front one is missing. No under panels were supplied. The poor appearance of the nose would be much less noticeable if the Side Panels were pulled together and the Top persuaded to fit better. Cheap and nasty though compared to the aluminium version.