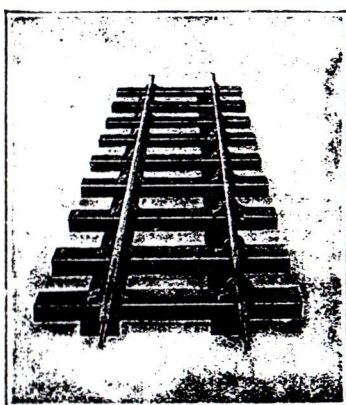


JLS

SHEFFIELD STEEL TRACK

IS THE
Best, Cheapest, and Most Durable
Permanent Way.

ALWAYS IN STOCK.



3-foot Steel Rails	5/8 per doz.
Chairs	2/6 " 100.
Creosoted Sleepers	3/9 " 100 G1 or 0.
Fishplates	1/6 " doz.

We have Clockwork Locos. G.I.
Electric " G.I.
" " G.O.
Signals, etc., etc.

New Catalogue Shortly. Watch our Adverts.

W. H. JUBB, Ltd., The All-British Firm,
SHEFFIELD.

Agents
Everywhere.

SOLDERING & BRAZING CAST IRON

is no longer an impossibility; in fact, it is as easy to solder or braze cast iron as other metals, if you use

DENTON'S CAST IRON SOLDERING FLUID

and DENTON'S CAST IRON BRAZING FLUX

Packed in 3/- Jars. Each 3/9 post free.
6 Jars 18/- post free. Sample each 7/- post free.

DENTON'S SPECIALITIES,
63, Newland, Northampton

Great Fun for Winter Evenings

If you like making things, you'll like a Primus outfit better than anything. It's great fun because all the models are miniature duplicates of the real things. Where there's wood in the original there's a wooden part in Primus, and all the metal parts are real. You don't have to pretend, because if you want doors, for instance, like in the model illustrated, they're in the outfit—it's the same with every other part.

The popular outfit, price 25/-, contains 267 wood and metal parts, and makes endless models. Smaller sets cost 7/8 and 10/6. Larger outfits from 45/- upwards.

Look! It's Wood
and Metal.



Sold by all
Stores, Toy Shops,
& Sports Outfitters.

Illustrated Leaflet
post free from
W. Butcher & Sons, Ltd.,
Camera House
Farringdon Avenue, E.C.4

PRIMUS ENGINEERING