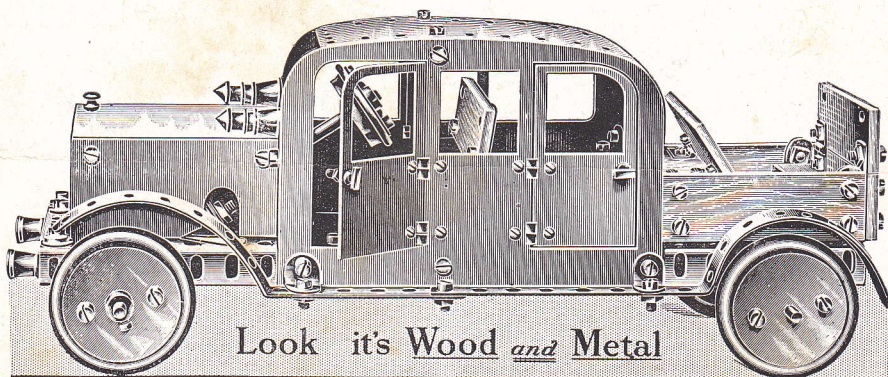


“PRIMUS” ENGINEERING

The British Toy
for the British Boy

SOLD BY
HARRIS & SON,
Sports Dept.,
37/8, St. Stephen's Street, Bristol.



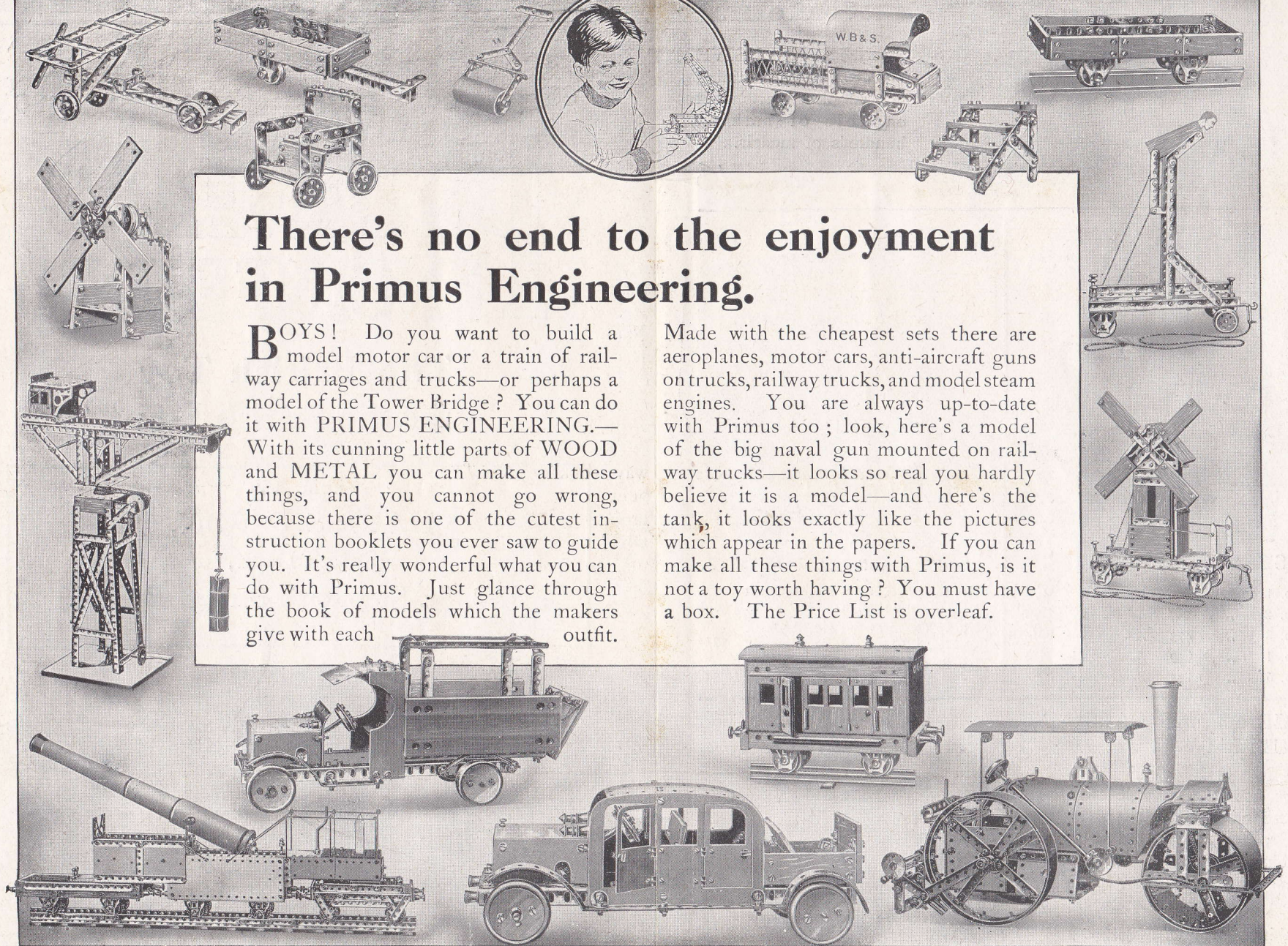
Look it's Wood *and* Metal

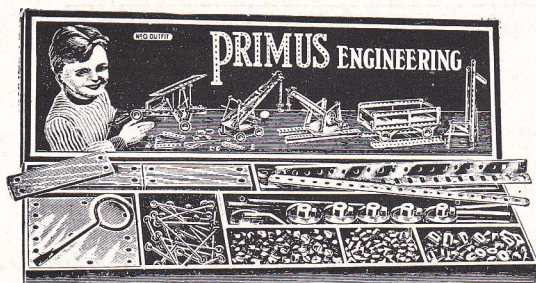


There's no end to the enjoyment in Primus Engineering.

BOYS! Do you want to build a model motor car or a train of railway carriages and trucks—or perhaps a model of the Tower Bridge? You can do it with PRIMUS ENGINEERING.—With its cunning little parts of WOOD and METAL you can make all these things, and you cannot go wrong, because there is one of the cutest instruction booklets you ever saw to guide you. It's really wonderful what you can do with Primus. Just glance through the book of models which the makers give with each outfit.

Made with the cheapest sets there are aeroplanes, motor cars, anti-aircraft guns on trucks, railway trucks, and model steam engines. You are always up-to-date with Primus too; look, here's a model of the big naval gun mounted on railway trucks—it looks so real you hardly believe it is a model—and here's the tank, it looks exactly like the pictures which appear in the papers. If you can make all these things with Primus, is it not a toy worth having? You must have a box. The Price List is overleaf.

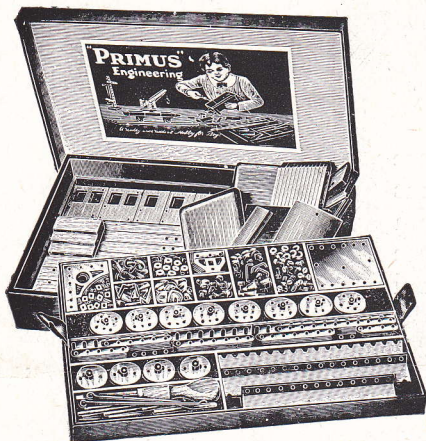




No. 0 OUTFIT.

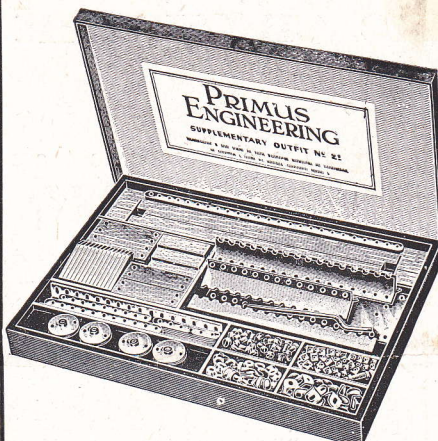
AN INEXPENSIVE OUTFIT, containing the simplest parts, but capable of making hundreds of models.

Price **5/6**



STANDARD OUTFITS.

No. 1 contains	140 parts	...	8/6
No. 2	267	..	13/6
No. 3	473	..	25/-
No. 4	649	..	37/6
No. 5	1,131	..	50/-



SUPPLEMENTARY OUTFITS.

No. 1s converts the No. 1 Outfit into the No. 2	6/6
No. 2s converts the No. 2 Outfit into the No. 3	15/-
No. 3s converts the No. 3 Outfit into the No. 4	15/-

THE PRIMUS CABINET OUTFIT No. 6.

AN OUTFIT DE LUXE, suitable for presentation, etc. 1,189 parts in polished oak 3-drawer cabinet, with lock and key.

Price **£5-5-0**

Cabinet only ... **£2-10-0**

