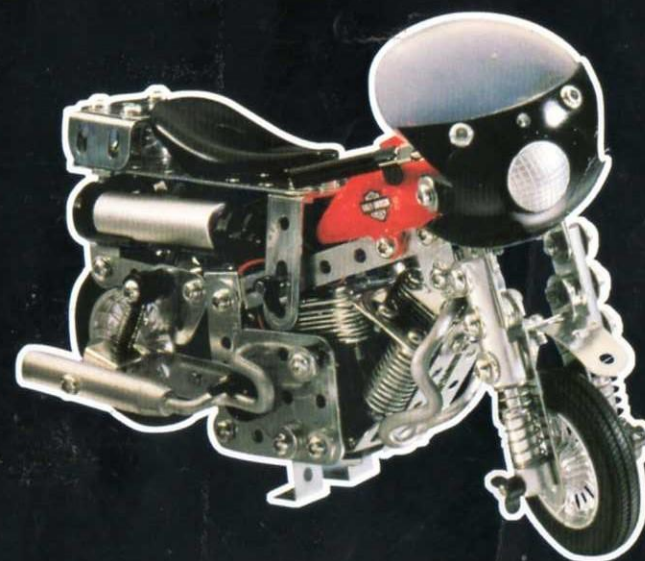


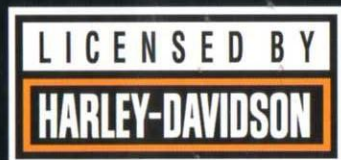
WWII CYCLE



ELECTRA GLIDE®



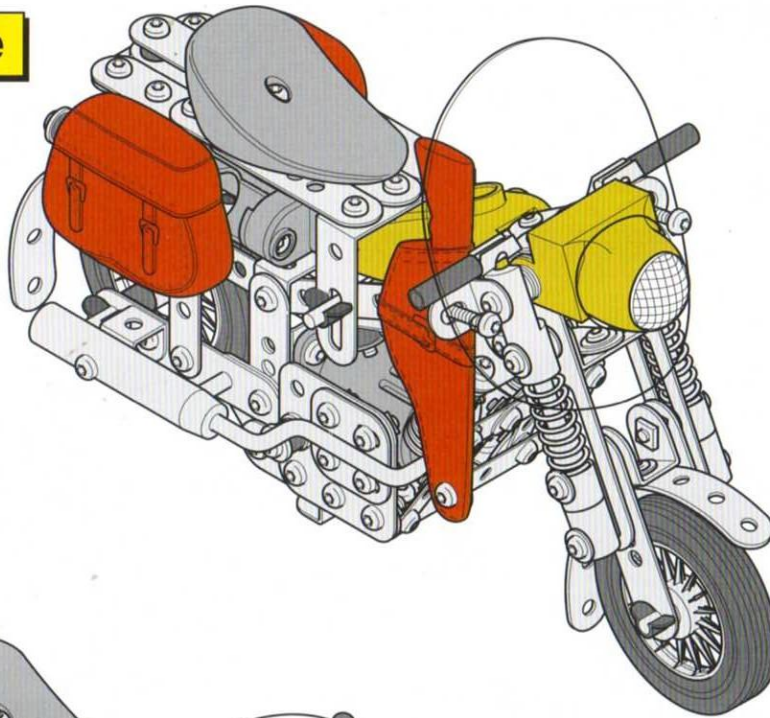
CAFE RACER®



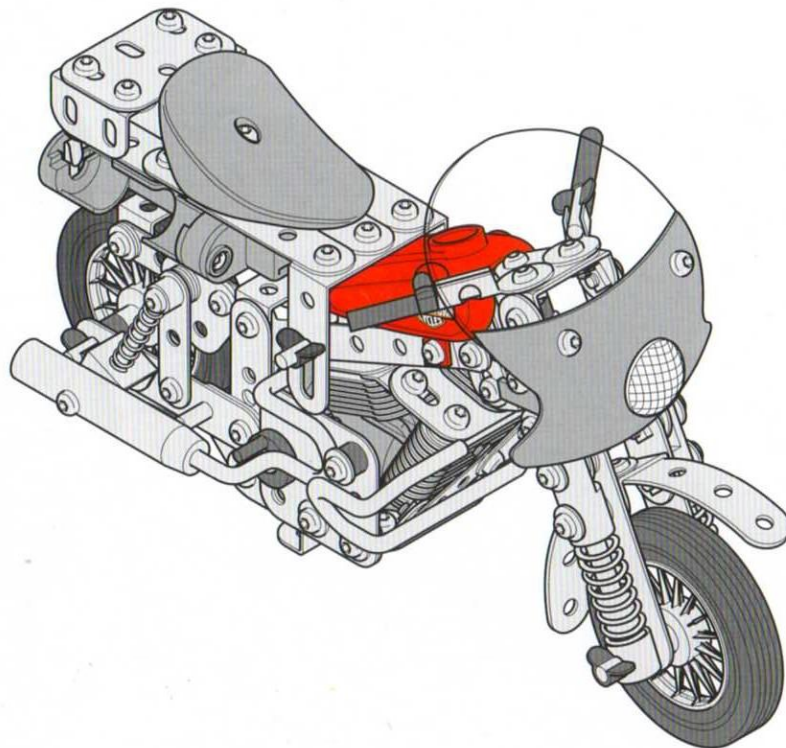
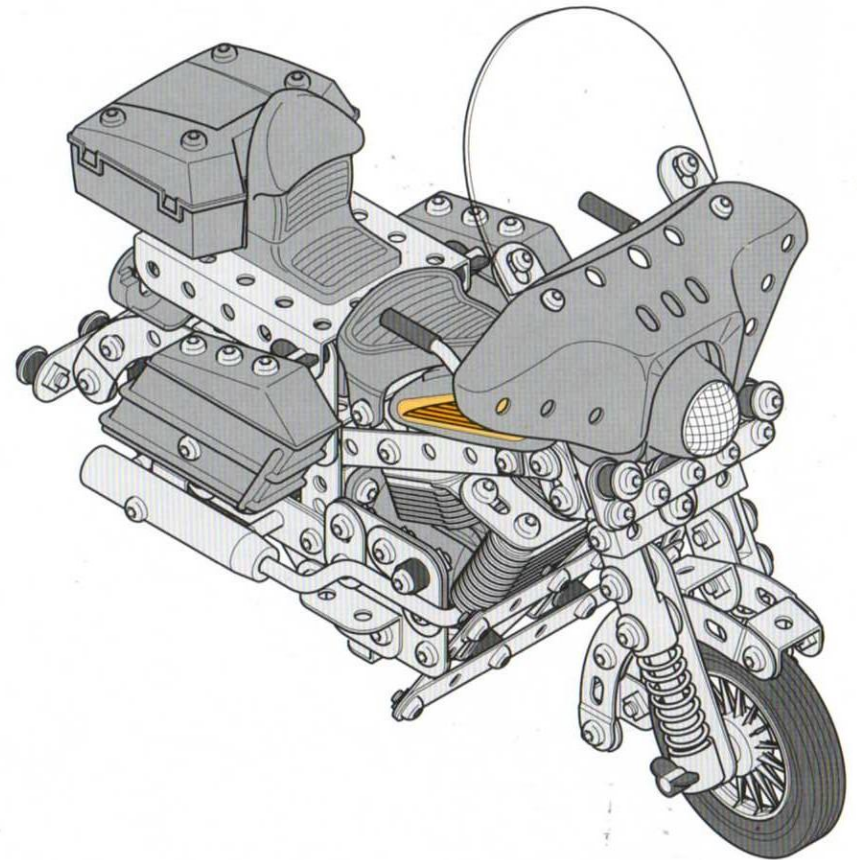
STEP BY STEP INSTRUCTIONS

545
PARTS
AGES 8 - ADULT

WWII Cycle



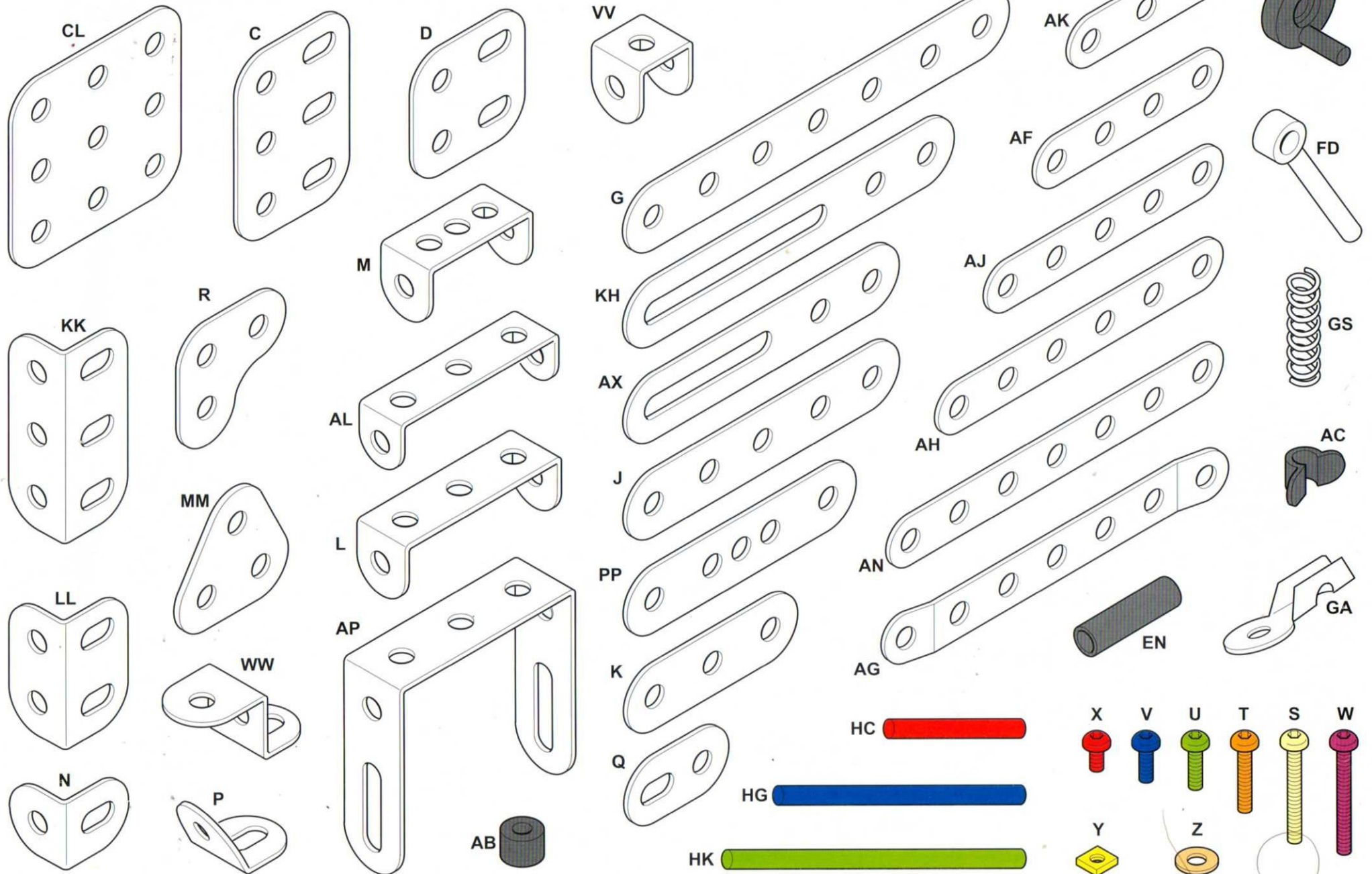
Electra Glide

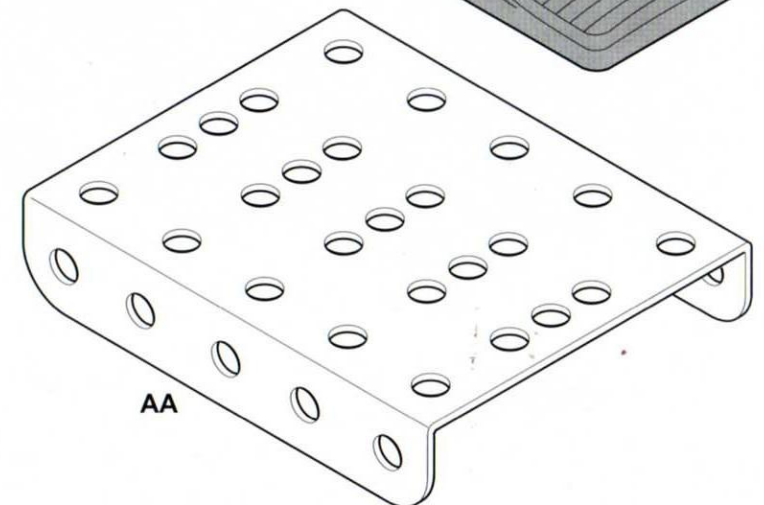
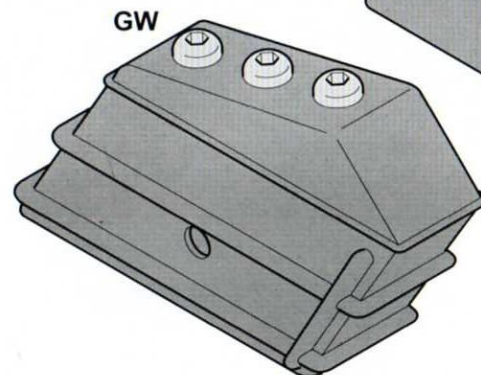
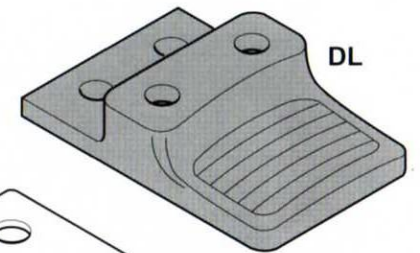
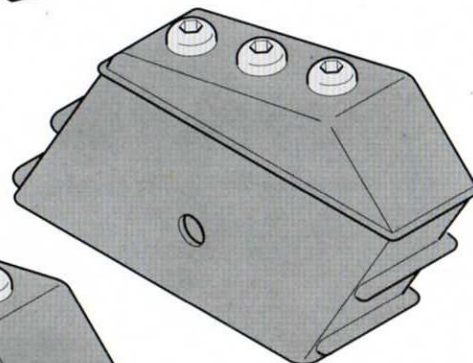
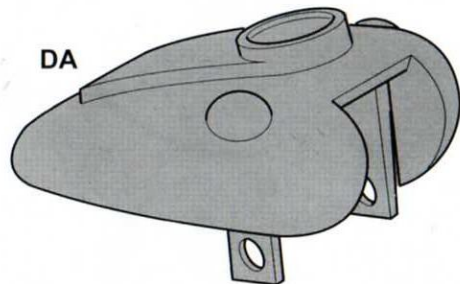
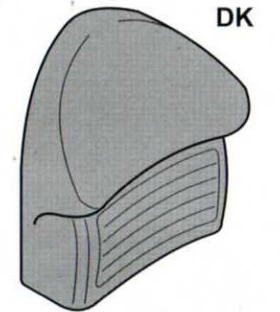
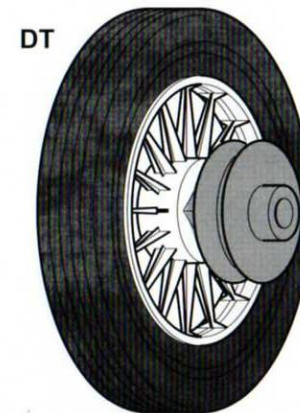
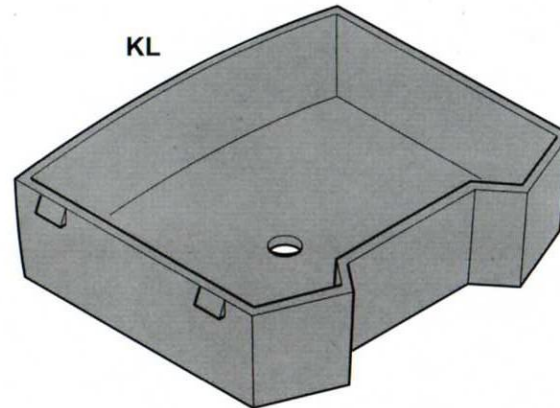
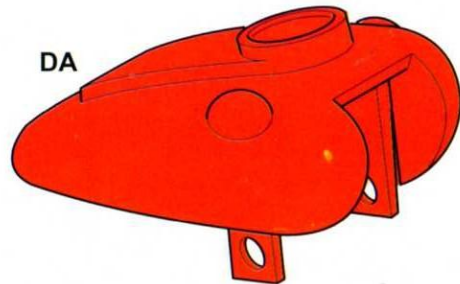
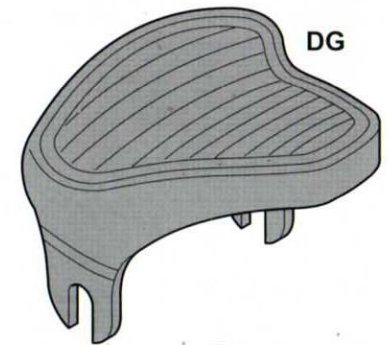
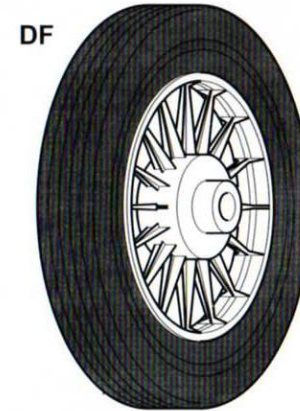
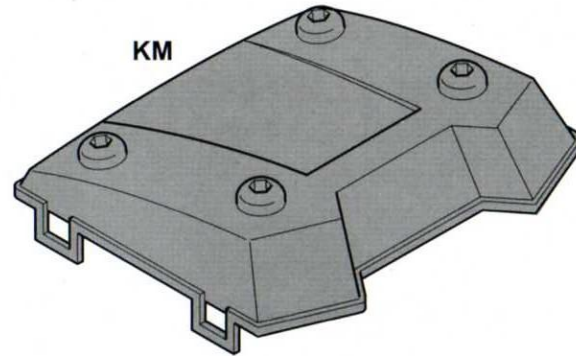
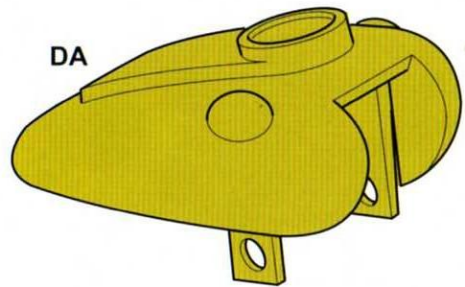


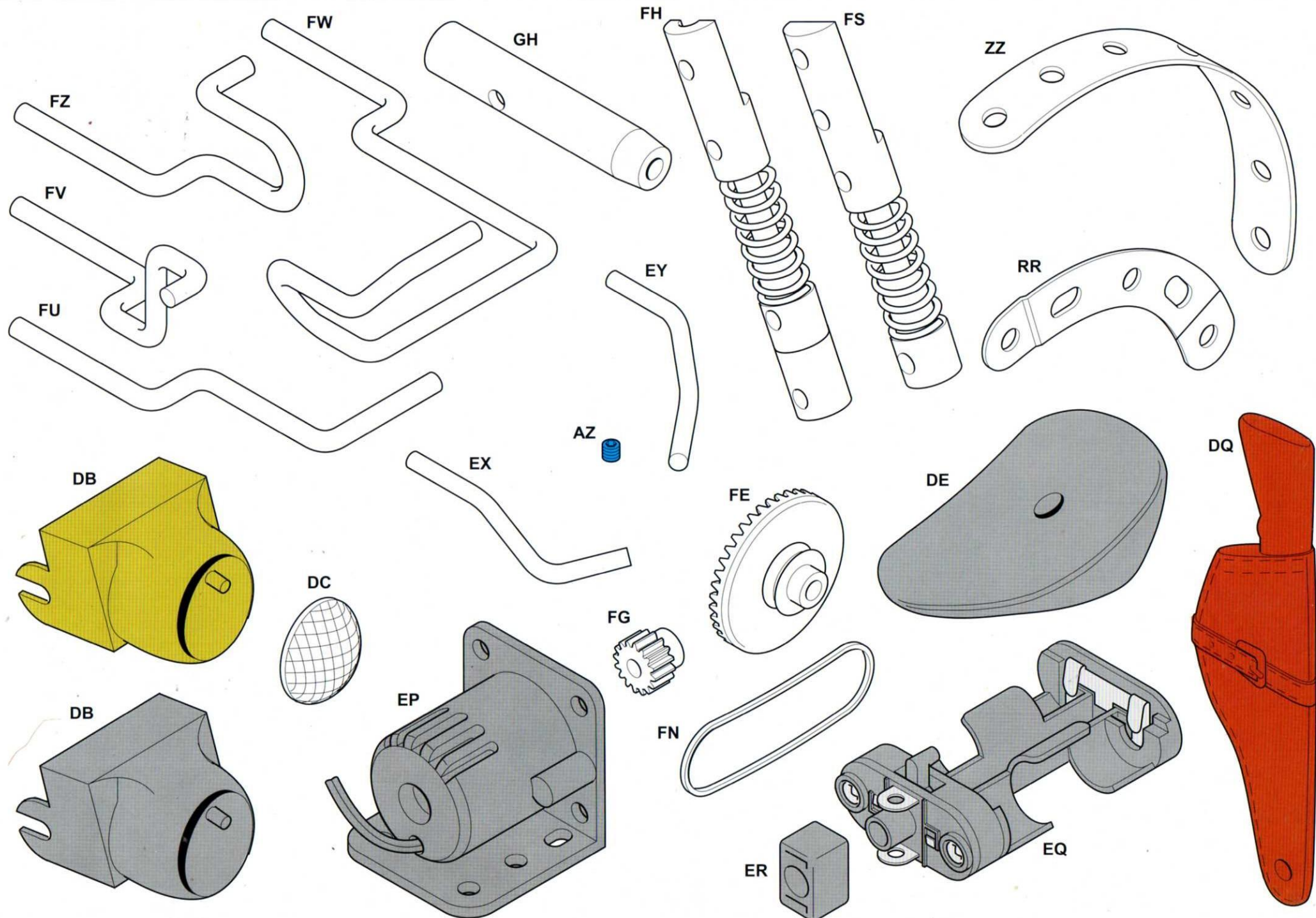
Cafe Racer

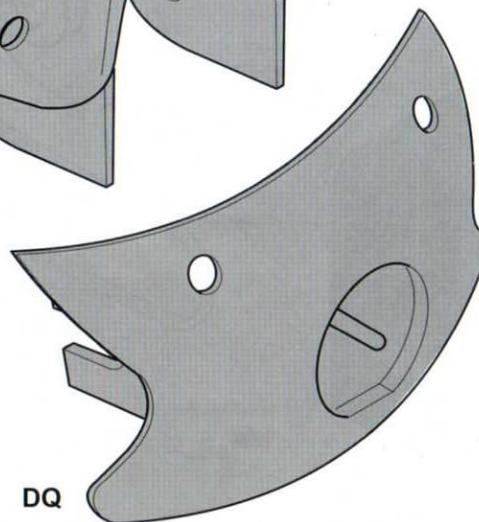
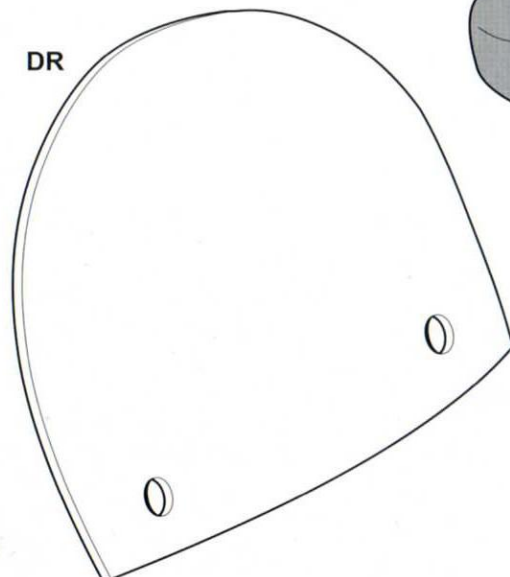
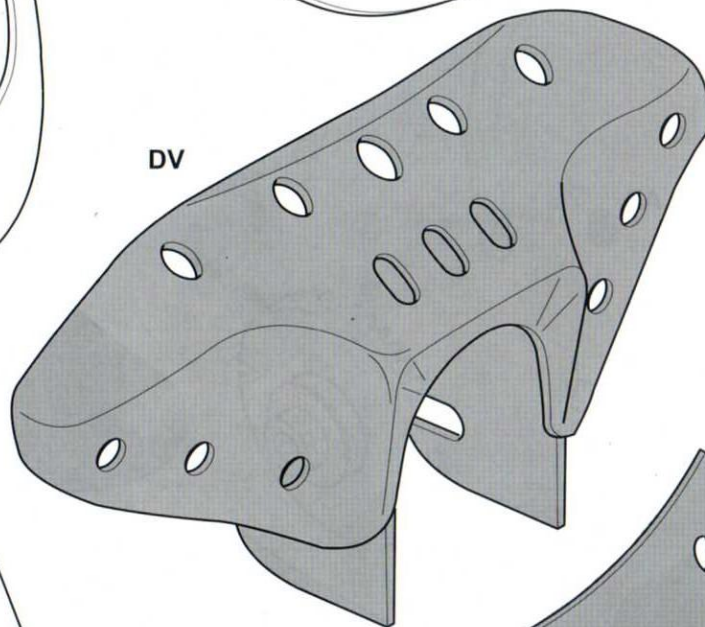
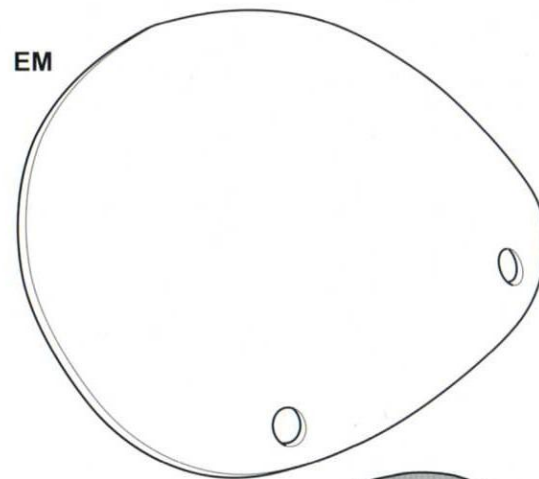
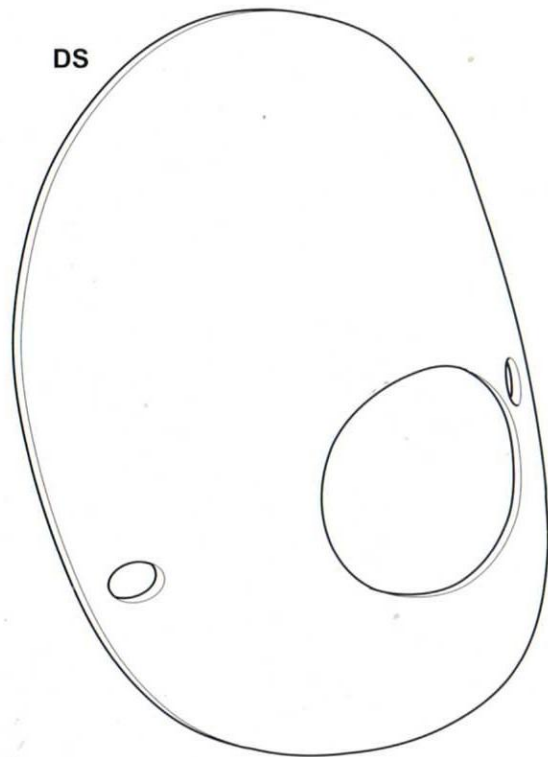
Parts Identification

All the parts that you need to build your Harley Davidson Motorcycles are shown here. Each part is identified by colour and identification letters.









KW

STEEL TEC™ HARLEY-DAVIDSON®



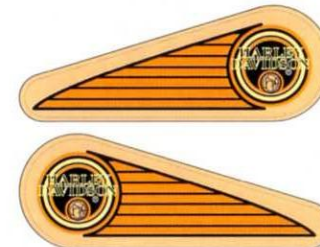
WWII
CYCLE

©1993 REMCO TOYS, NEW YORK, NY 10010

MADE IN CHINA

KV

STEEL TEC™ HARLEY-DAVIDSON®



ELECTRA
GLIDE

©1993 REMCO TOYS, NEW YORK, NY 10010

MADE IN CHINA

KY

STEEL TEC™ HARLEY-DAVIDSON®

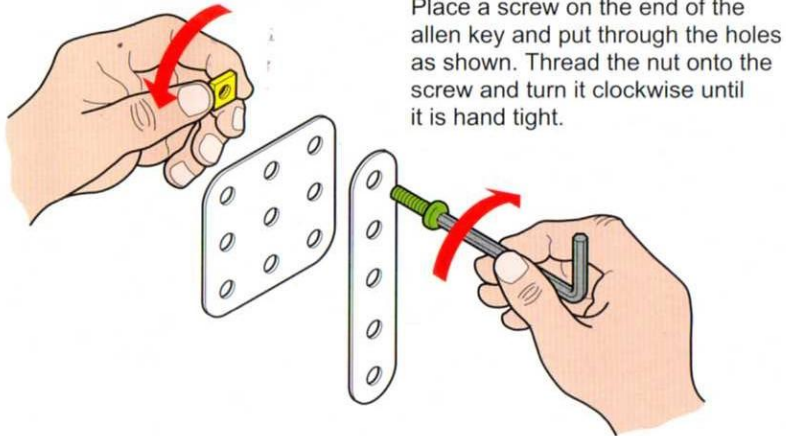


CAFE
RACER

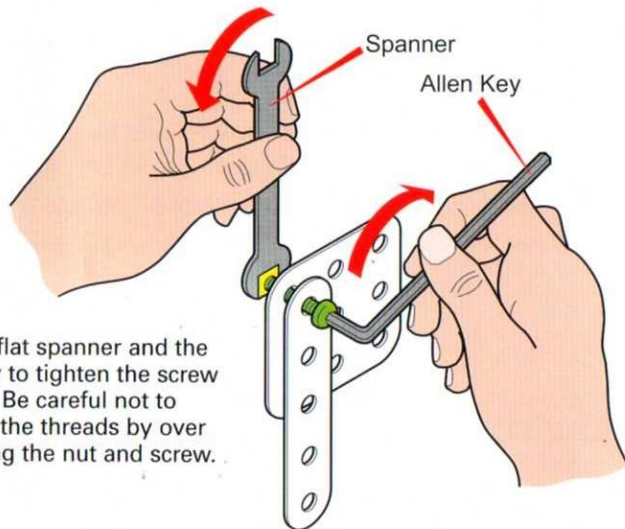
©1993 REMCO TOYS, NEW YORK, NY 10010

MADE IN CHINA

How to use nuts and screws

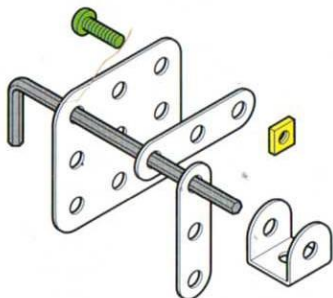


Place a screw on the end of the allen key and put through the holes as shown. Thread the nut onto the screw and turn it clockwise until it is hand tight.



Spanner
Allen Key

Use the flat spanner and the allen key to tighten the screw and nut. Be careful not to damage the threads by over tightening the nut and screw.



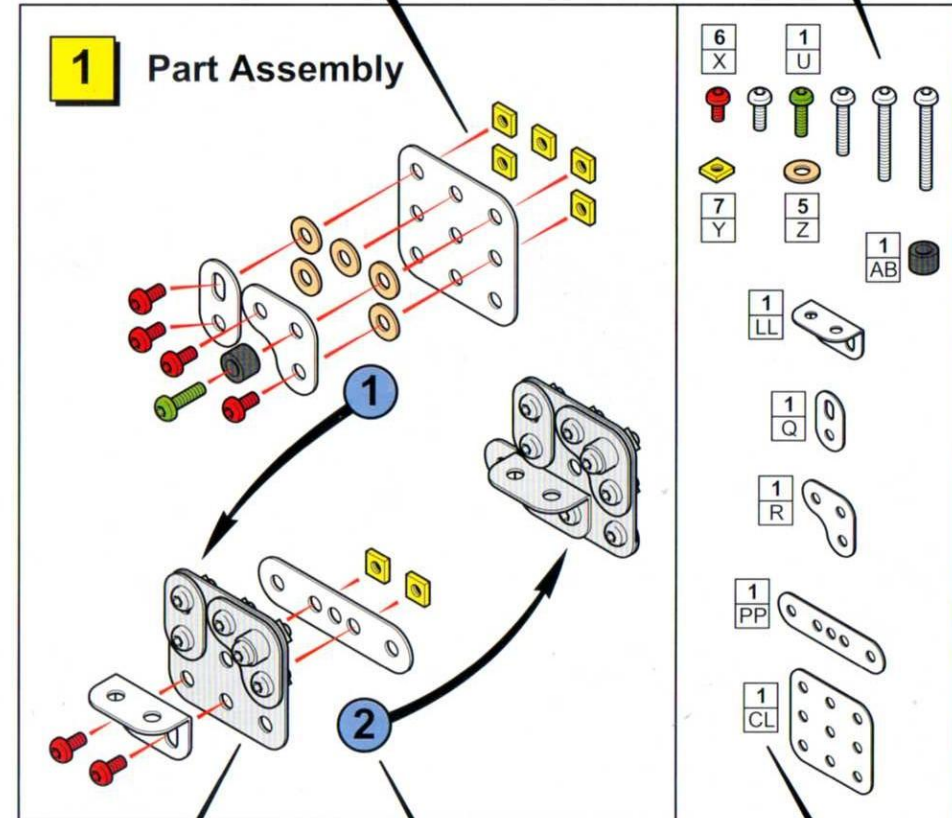
To make it easier to put screws through several parts at once, you could use an allen key or an axle to align them.

How to use the instructions

This is your checklist.

The parts shown here are all the parts you'll need for this stage. Select the parts first, then start the construction. You will know if you have done the assembly correctly if all the parts are used.

These arrows show where screws and nuts go.

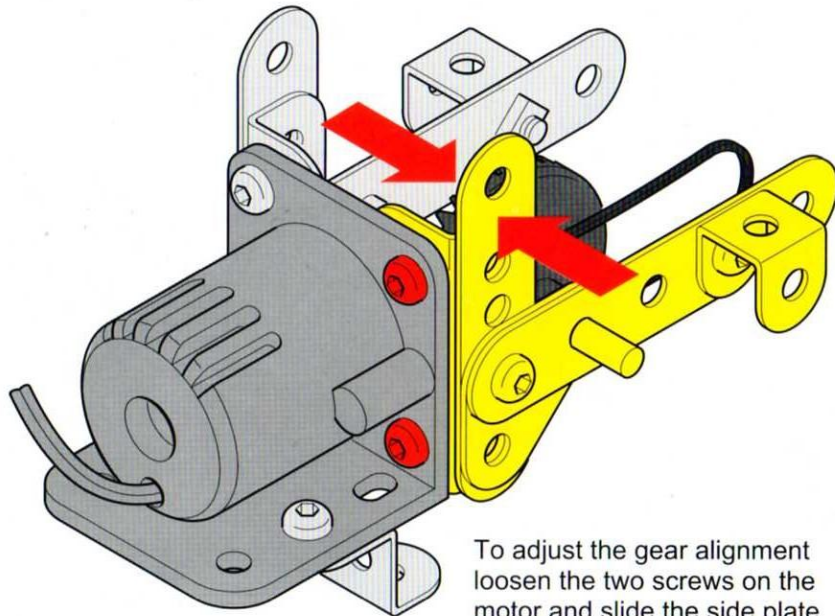


Assembled parts are shown as a grey colour.

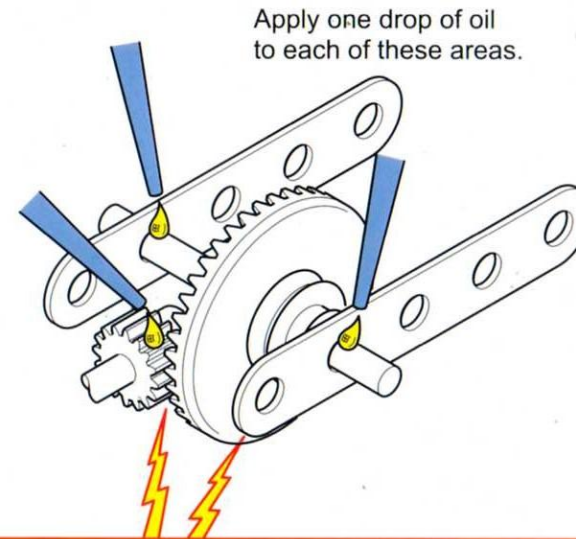
These numbers and arrows show the order that the assemblies should take place.

These boxes show the number of each part that you will need and the identification code. (see the checklist and parts identification pages)

Aligning the gears



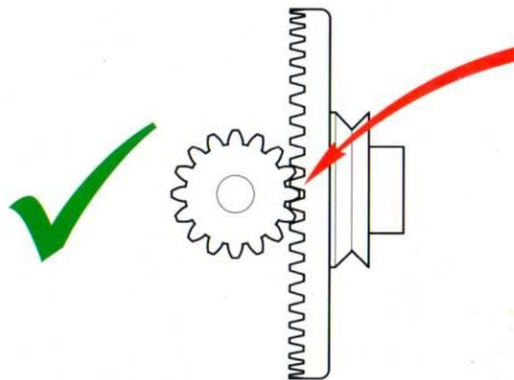
To adjust the gear alignment loosen the two screws on the motor and slide the side plate until the gears mesh properly.



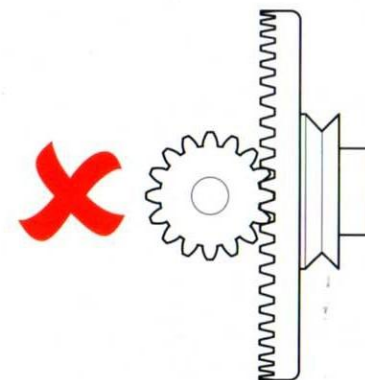
Apply one drop of oil to each of these areas.

HAZARD WARNING

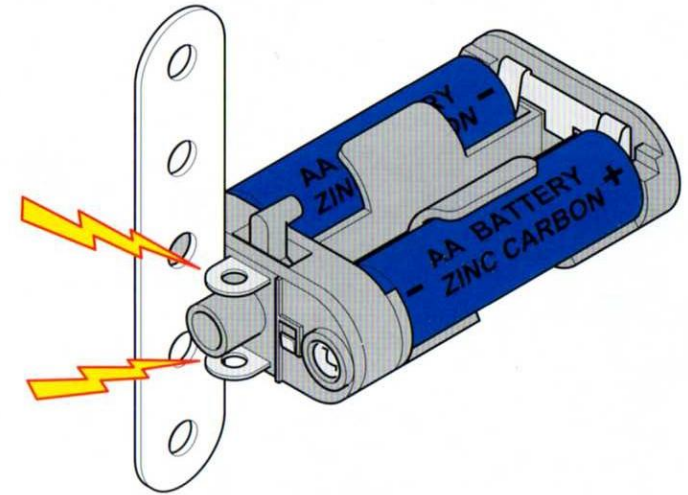
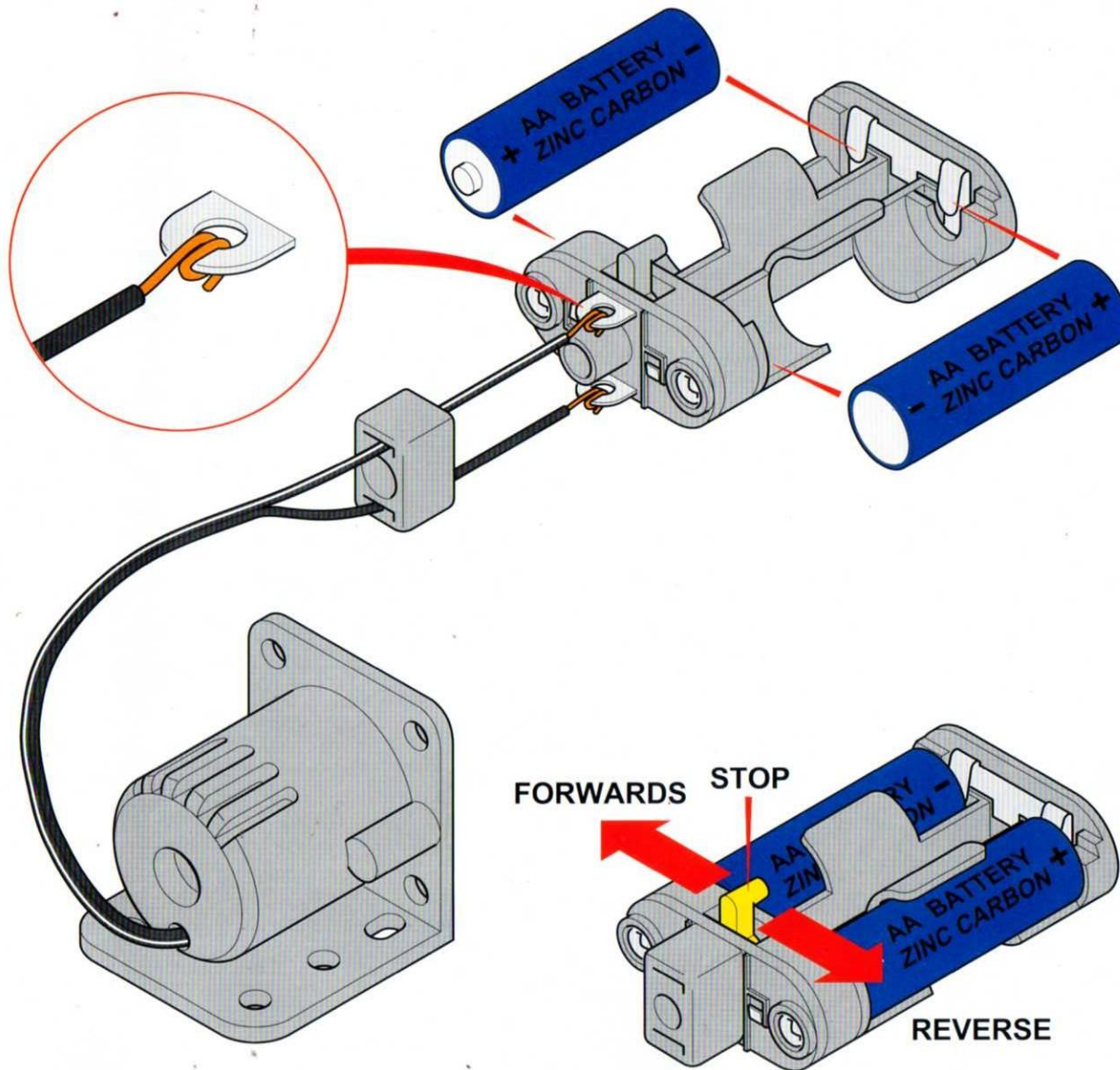
Be careful not to put your fingers near the exposed gears when the motor is running. They could become trapped between the wheel and the steel parts.



Make sure that there is a small gap between the gear teeth, this will stop the gears binding and allow the wheel to turn freely.



Attaching the battery pack to the motor



CAUTION !

Contacting both terminals with metal parts while the batteries are in, will ruin the batteries.

Customer Services Helpline

If you are not entirely satisfied with your purchase, please telephone our **24 - hour Customer Services Helpline.**

There's no need to send the product to us. Just phone us on the number and we will dispatch a replacement for any damaged or missing part within 5 working days. We will need the following information with your enquiry:

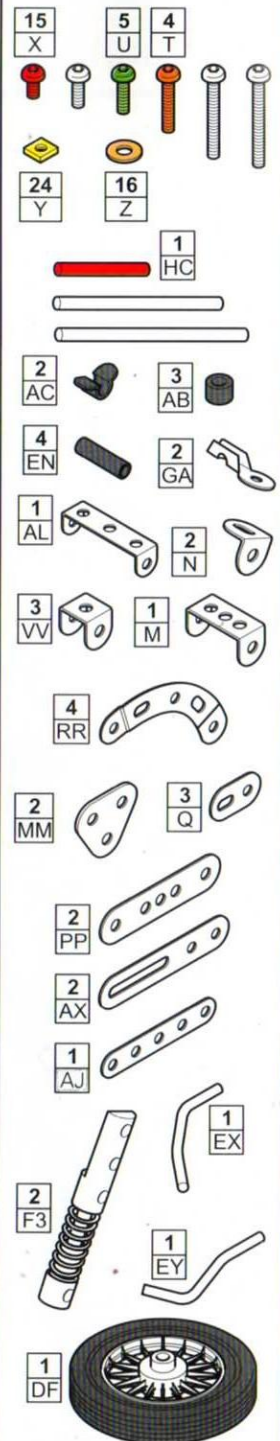
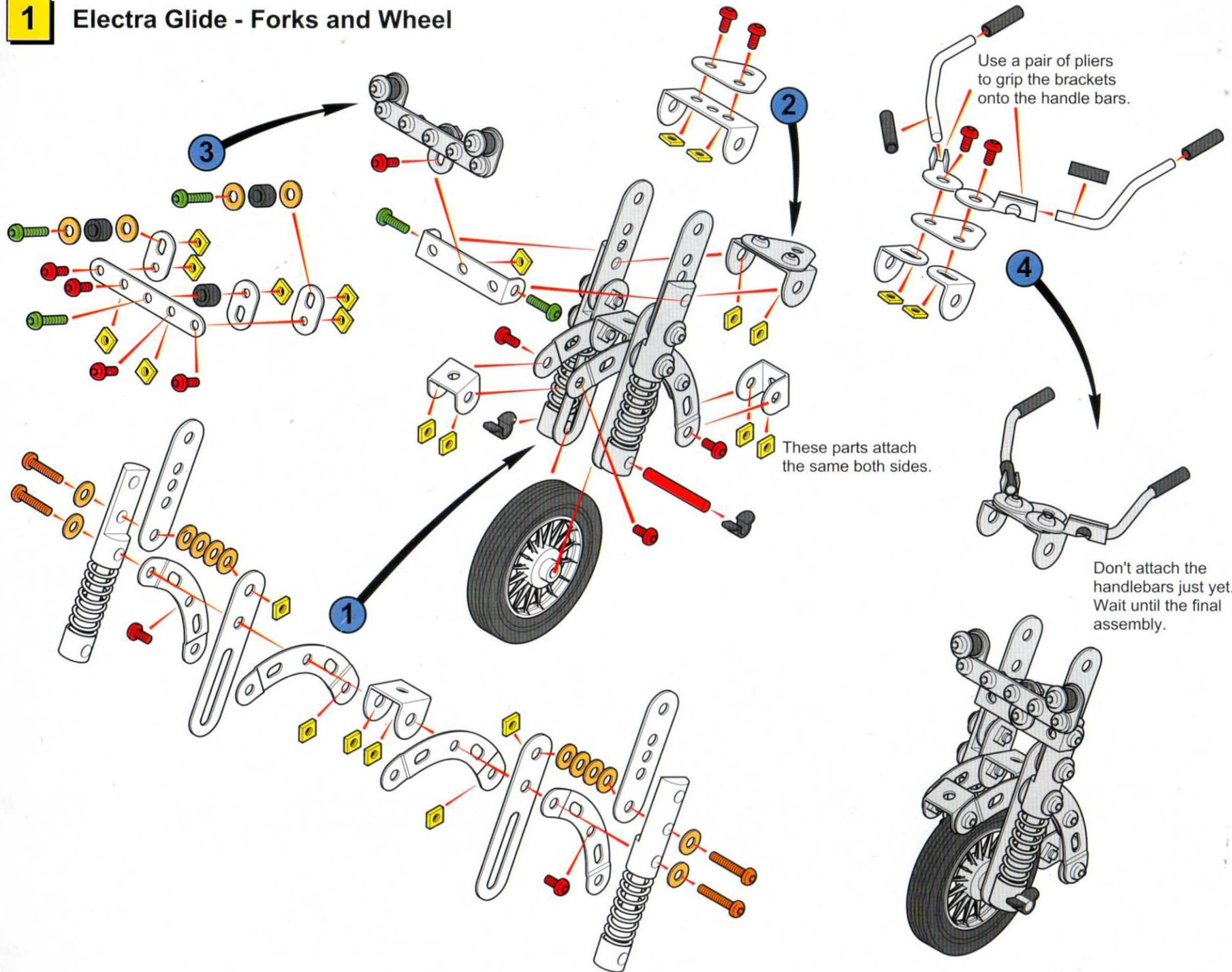
- Name and address of store and date of purchase
- Product name / description / identification number
- Description of missing / damaged part
- Your name and address

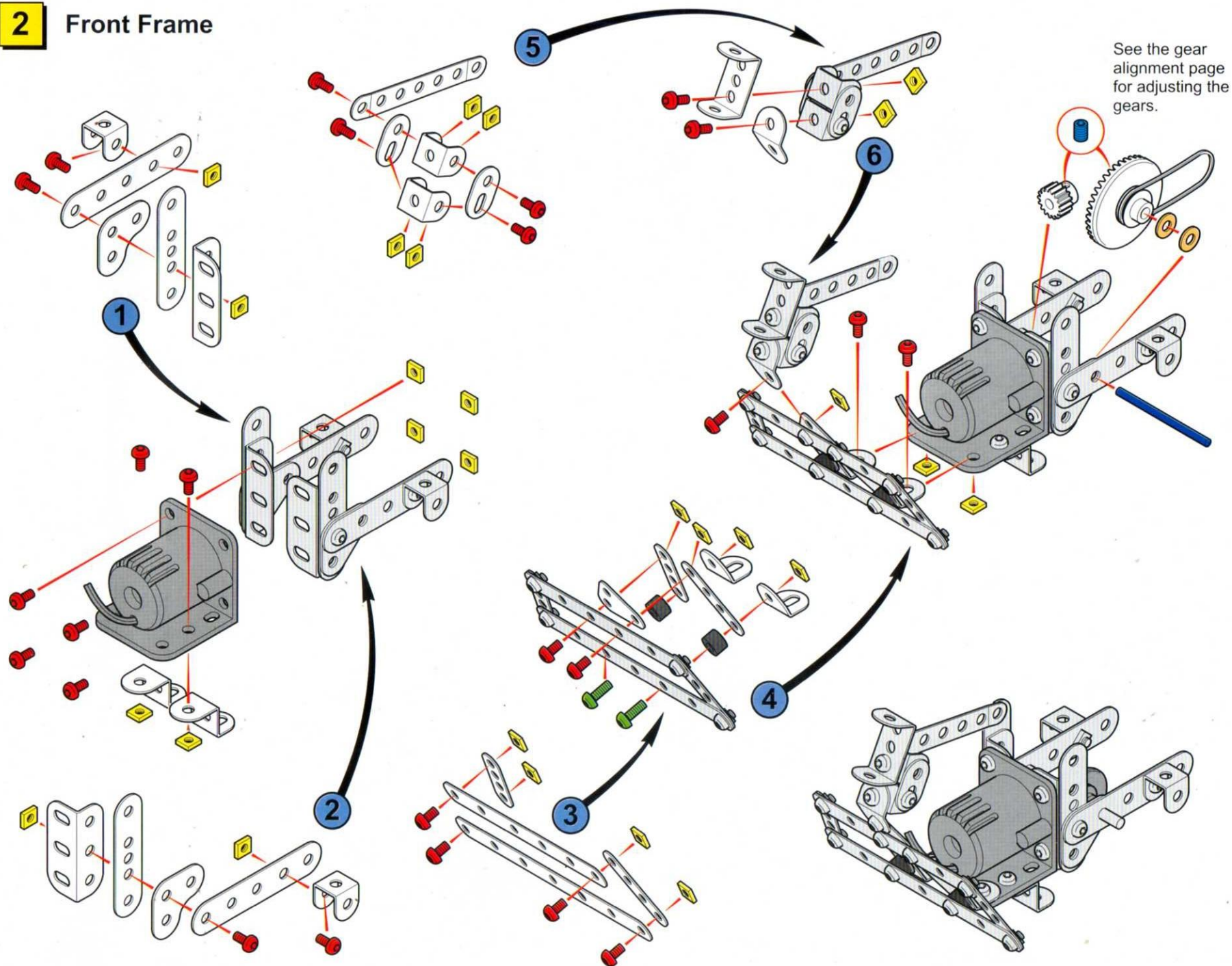
CUSTOMER SERVICE HELPLINE: 01685 - 721456 (24hrs)

Or you can write to us at:

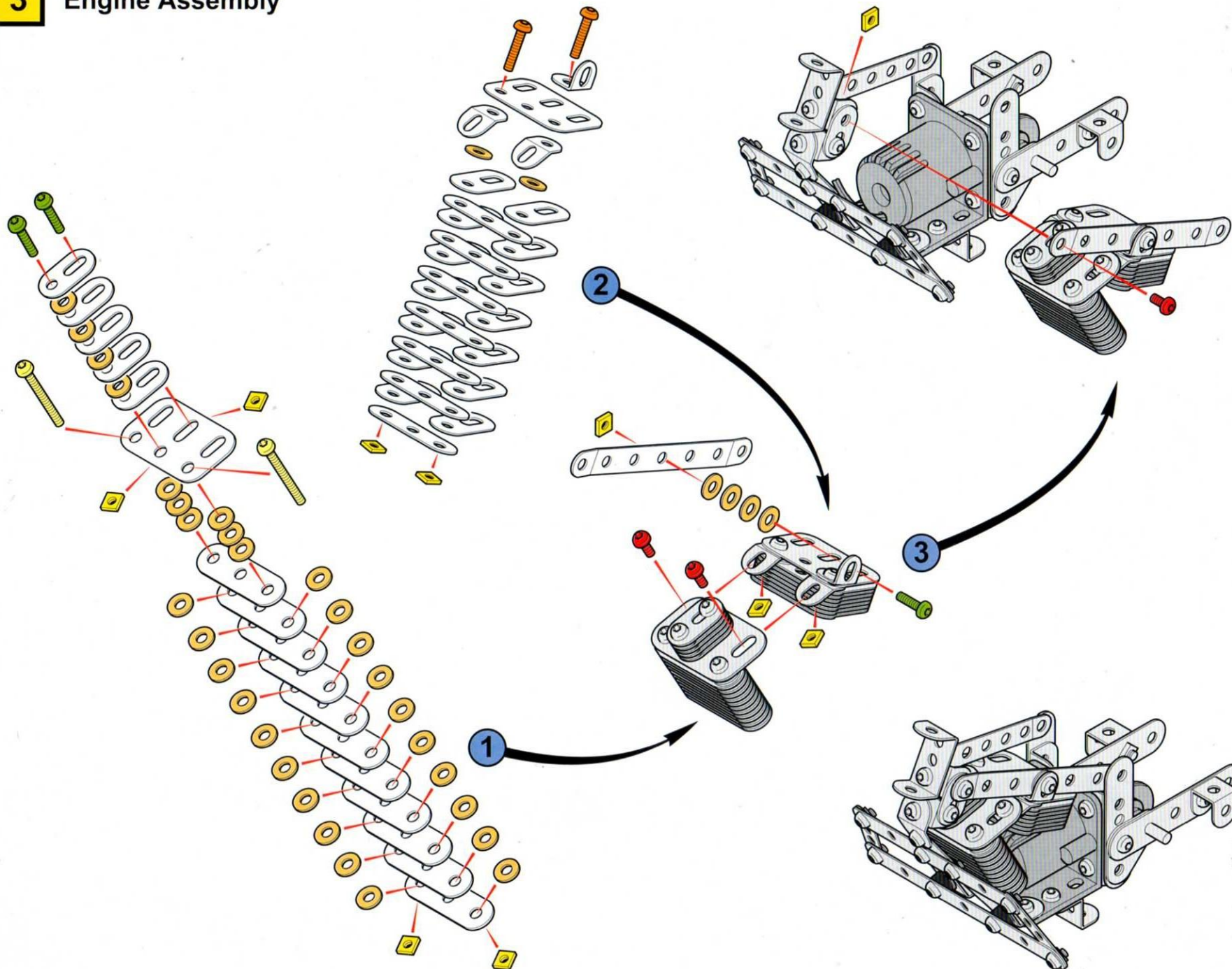
Peter Pan
Dragonparc, Abercanaid
Merthyr Tydfil
Mid Glamorgan CF8 1PQ

You can also use this service to obtain replacement parts during the life of your product, so keep this address and telephone number for future reference.

1**Electra Glide - Forks and Wheel**

2**Front Frame**

| | | | | | |
|---------|--------|---------|--|--|--|
| 25 X | 2 U | | | | |
| 27 Y | 2 Z | 2 AB | | | |
| 1 HG | | | | | |
| 2 WW | 1 M | | | | |
| 4 VV | | 2 K | | | |
| 3 P | | 2 Q | | | |
| 1 MM | | 2 PP | | | |
| 2 R | | 2 J | | | |
| 1 AG | | | | | |
| 2 AF | | | | | |
| 1 AH | | | | | |
| 1 AN | | 1 FN | | | |
| 2 AZ | | 1 FE | | | |
| 1 FG | | | | | |
| 1 EP | | | | | |

3**Engine Assembly**

| | | | |
|--------|--------|--------|--------|
| 3 X | 3 U | 2 T | 2 S |
| | | | |

| | |
|---------|---------|
| | |
| 10 Y | 36 Z |

| | |
|--------|--|
| 2 P | |
|--------|--|

| | |
|--------|--|
| 1 N | |
|--------|--|

| | |
|---------|--|
| 18 K | |
|---------|--|

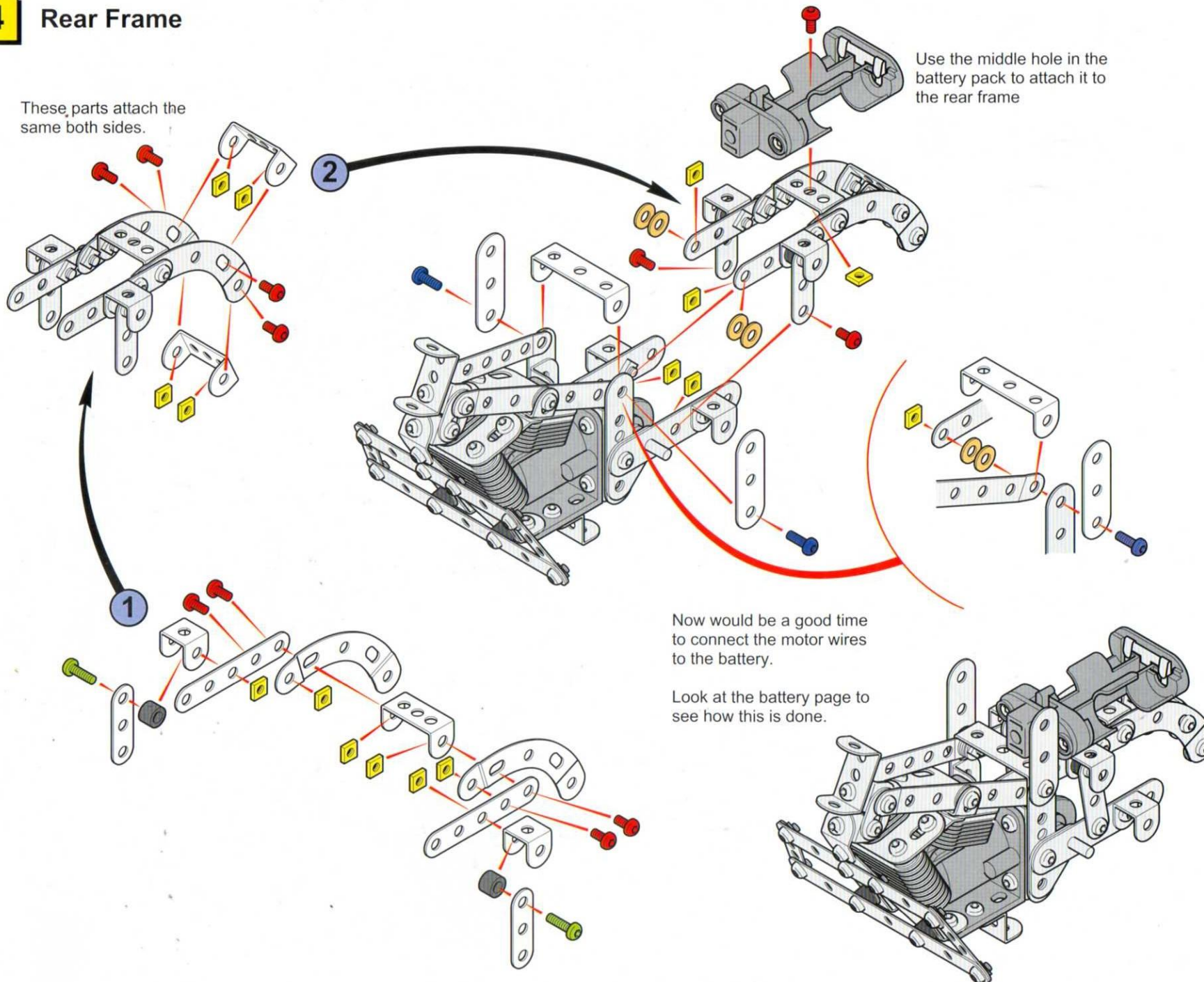
| | |
|---------|--|
| 19 Q | |
|---------|--|

| | |
|--------|--|
| 2 C | |
|--------|--|

| | |
|---------|--|
| 1 AG | |
|---------|--|

4**Rear Frame**

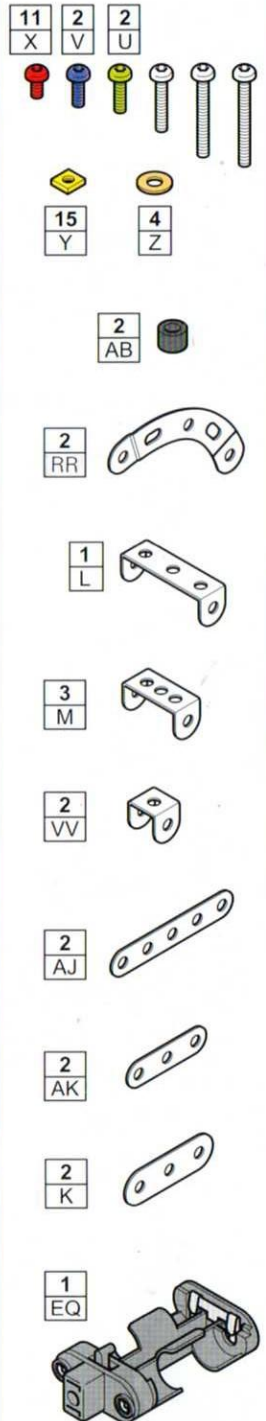
These parts attach the same both sides.



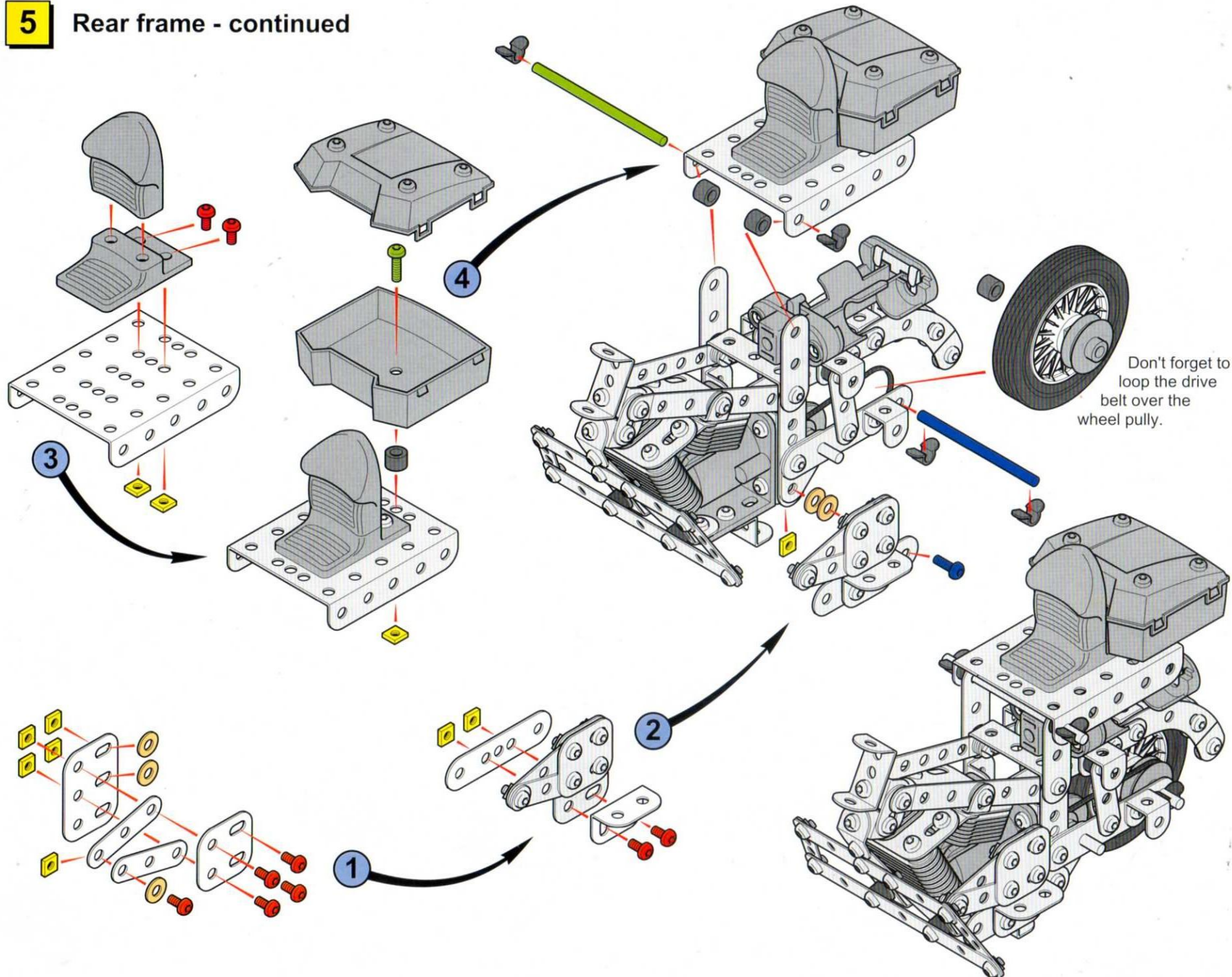
Use the middle hole in the battery pack to attach it to the rear frame

Now would be a good time to connect the motor wires to the battery.

Look at the battery page to see how this is done.



5 Rear frame - continued

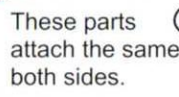


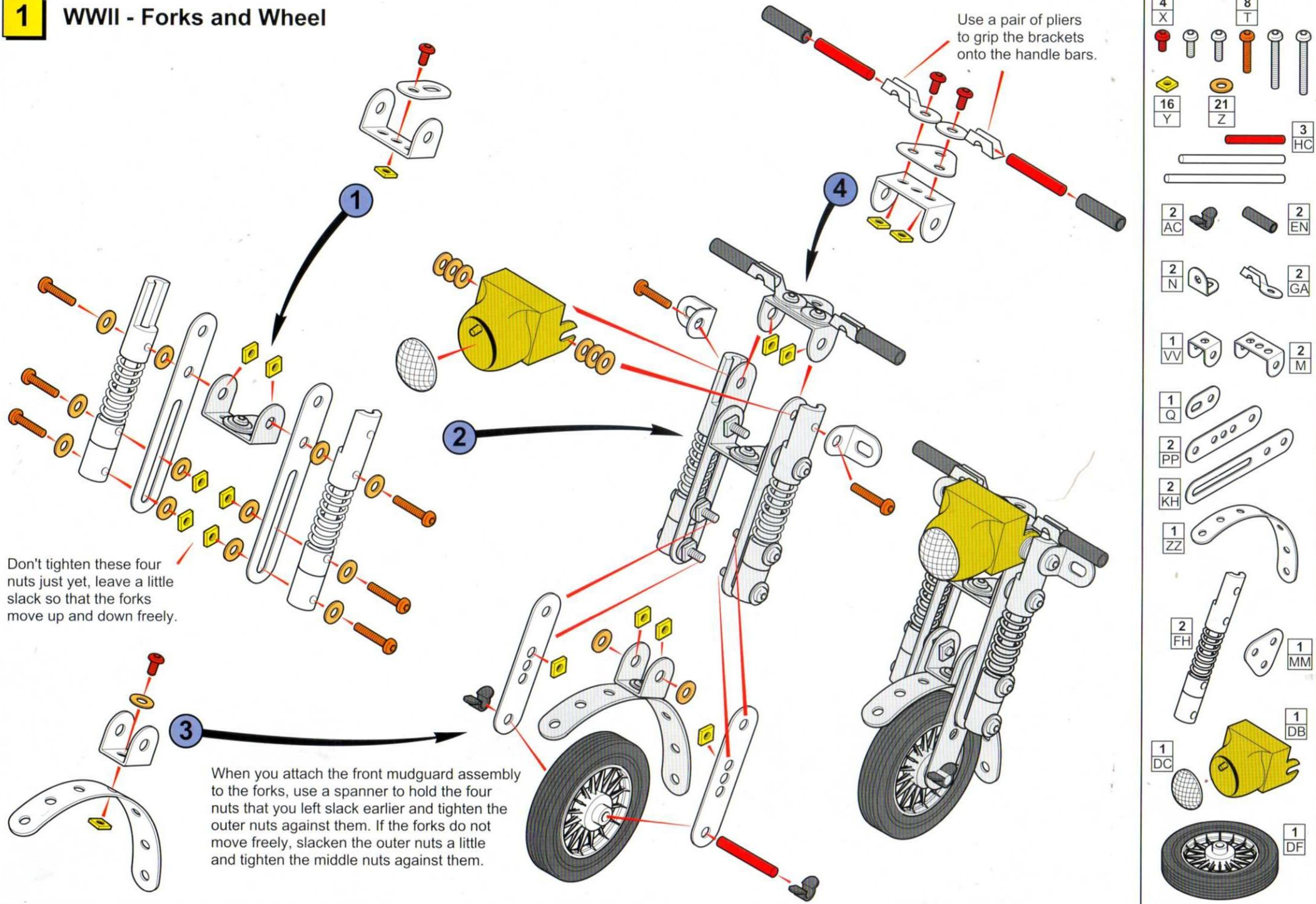
| | | |
|---------|---------|---------|
| 9 X | 1 V | 1 U |
| 11 Y | 5 Z | |
| 1 HG | 1 HK | |
| 1 LL | 2 AK | 1 PP |
| 1 C | 1 AA | 1 KM |
| x1 K | 1 DK | 1 DL |
| 1 DT | | |

| | | |
|---------|---------|--------|
| 4 AC | 4 AB | 1 D |
|---------|---------|--------|

| | | |
|---------|---------|---------|
| 1 X | 1 V | 1 U |
| 11 Y | 5 Z | |
| 1 HG | 1 HK | |
| 1 LL | 2 AK | 1 PP |
| 1 C | 1 AA | 1 KM |
| x1 K | 1 DK | 1 DL |
| 1 DT | | |

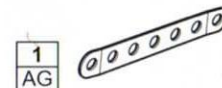
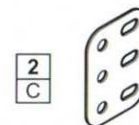
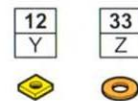
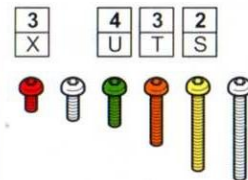
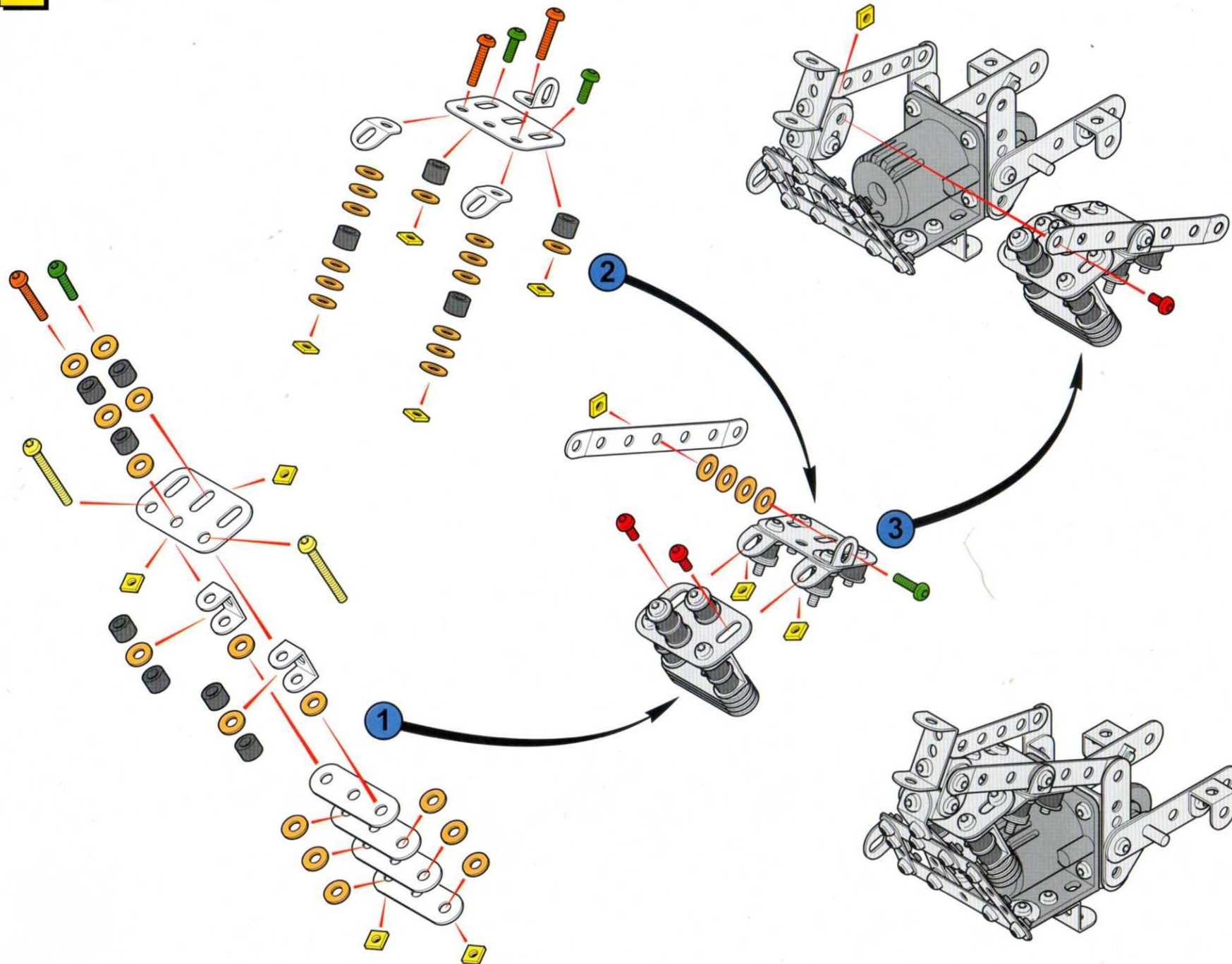
6



1**WWII - Forks and Wheel**



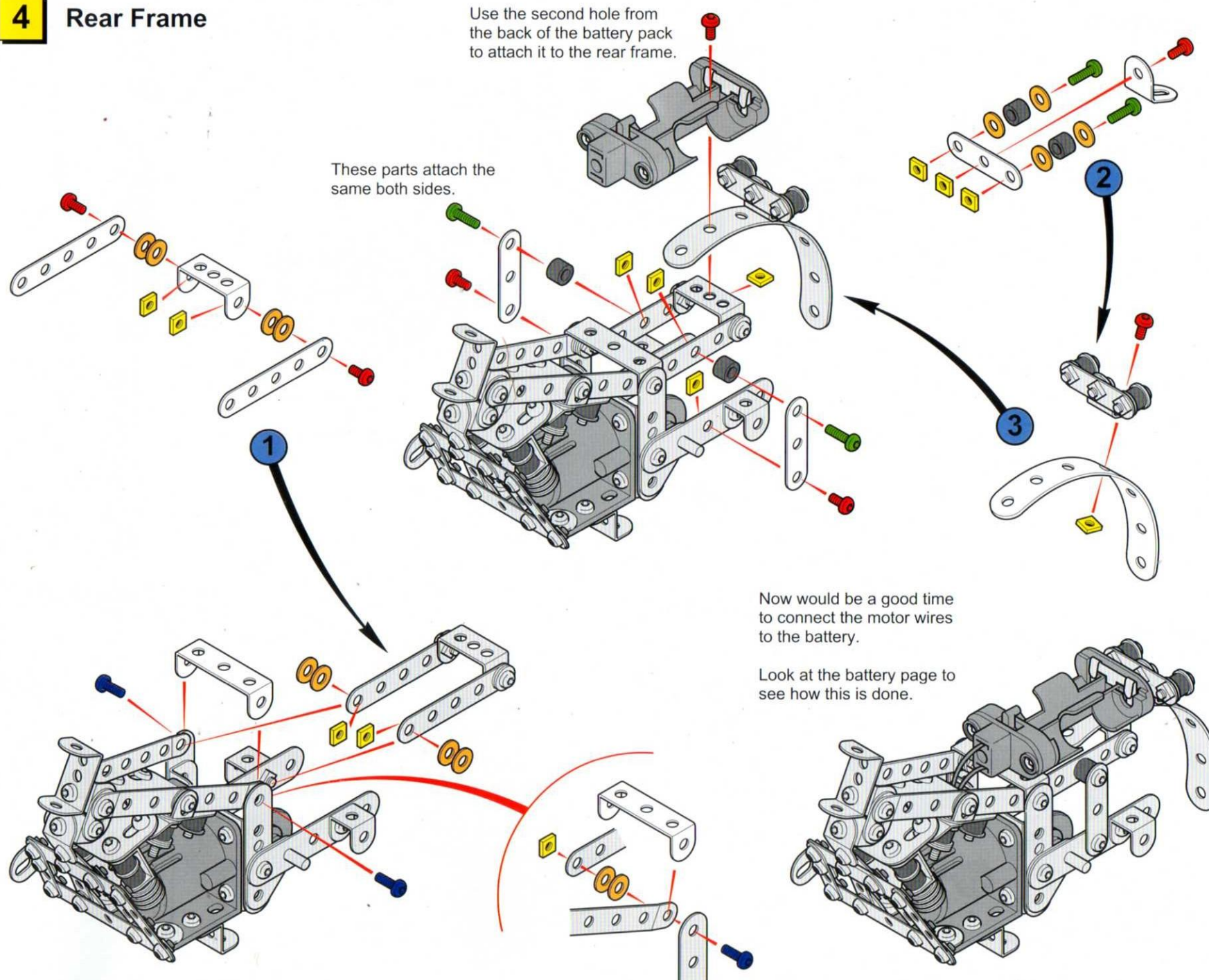
3 Engine Assembly



4**Rear Frame**

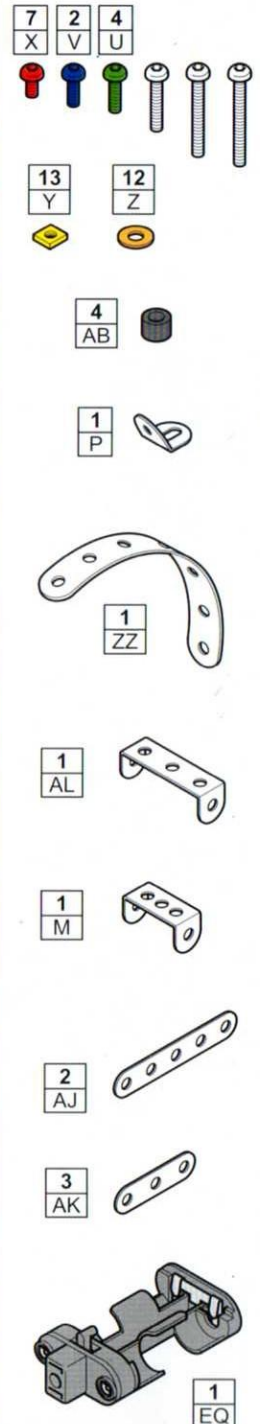
Use the second hole from the back of the battery pack to attach it to the rear frame.

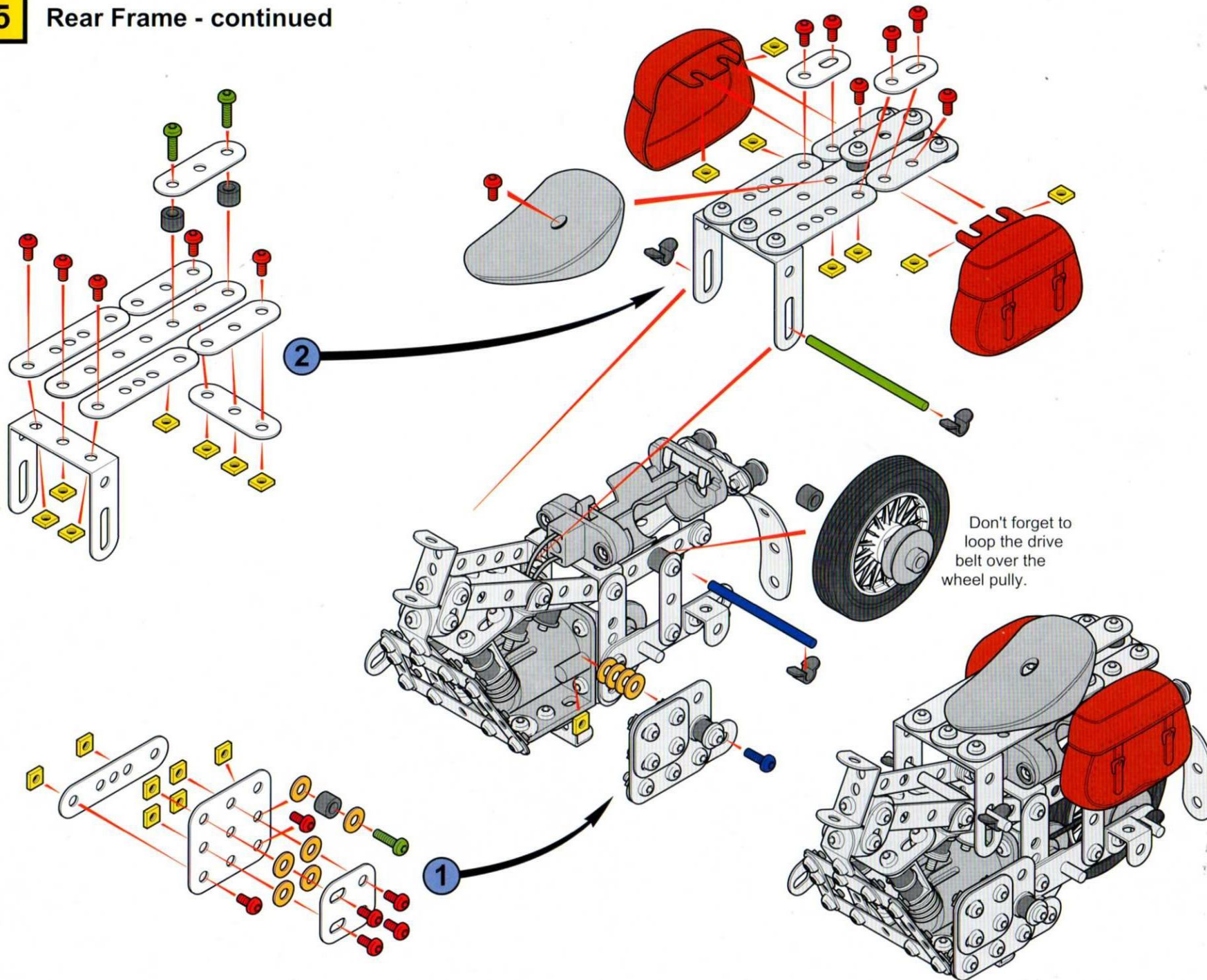
These parts attach the same both sides.



Now would be a good time to connect the motor wires to the battery.

Look at the battery page to see how this is done.

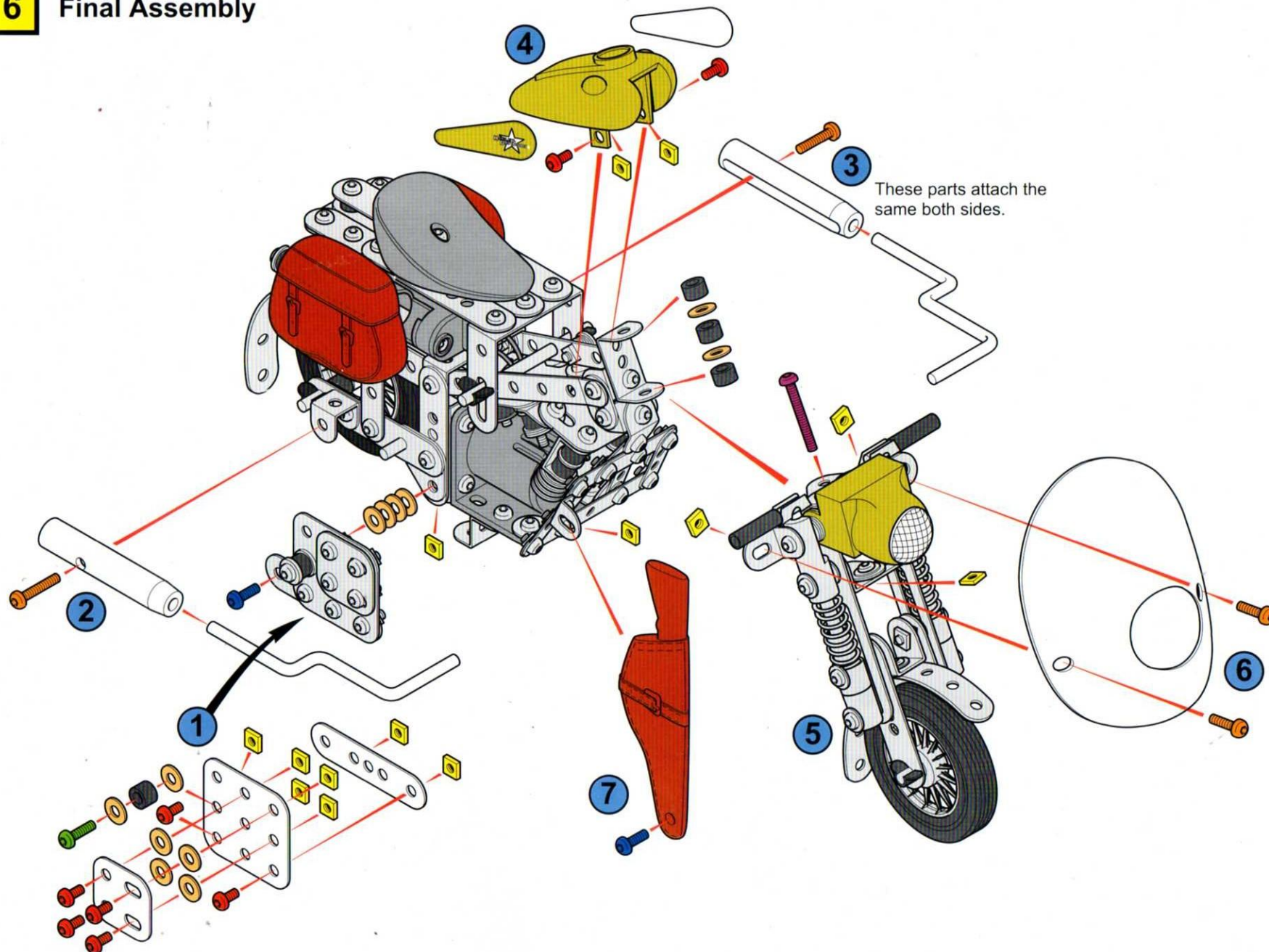



5**Rear Frame - continued**

| | | |
|---------|---------|--------|
| 18 X | 1 V | 3 U |
| | | |
| | | |
| 22 Y | 10 Z | |
| | | |
| 1 HG | | |
| 1 HK | | |
| 4 AB | 4 AC | |
| 1 AN | | |
| 3 PP | | |
| 4 K | | 1 D |
| 2 Q | | |
| 1 CL | | |
| 1 AP | | |
| 2 DF | | |
| 1 DE | | |
| 1 DT | | |

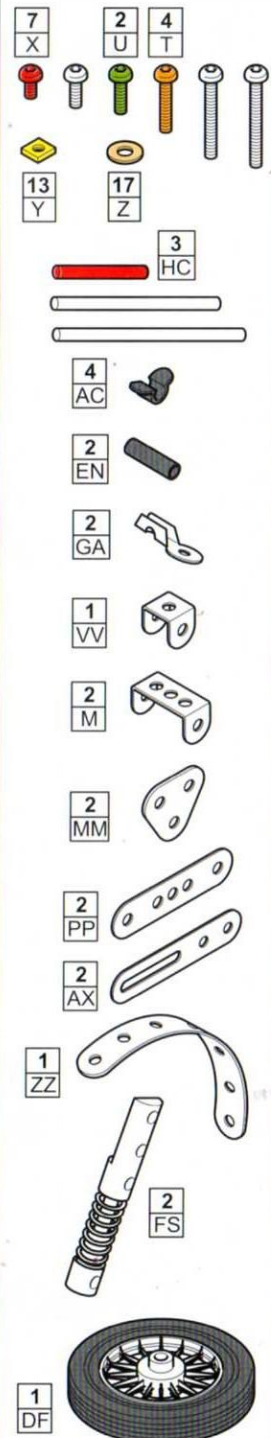
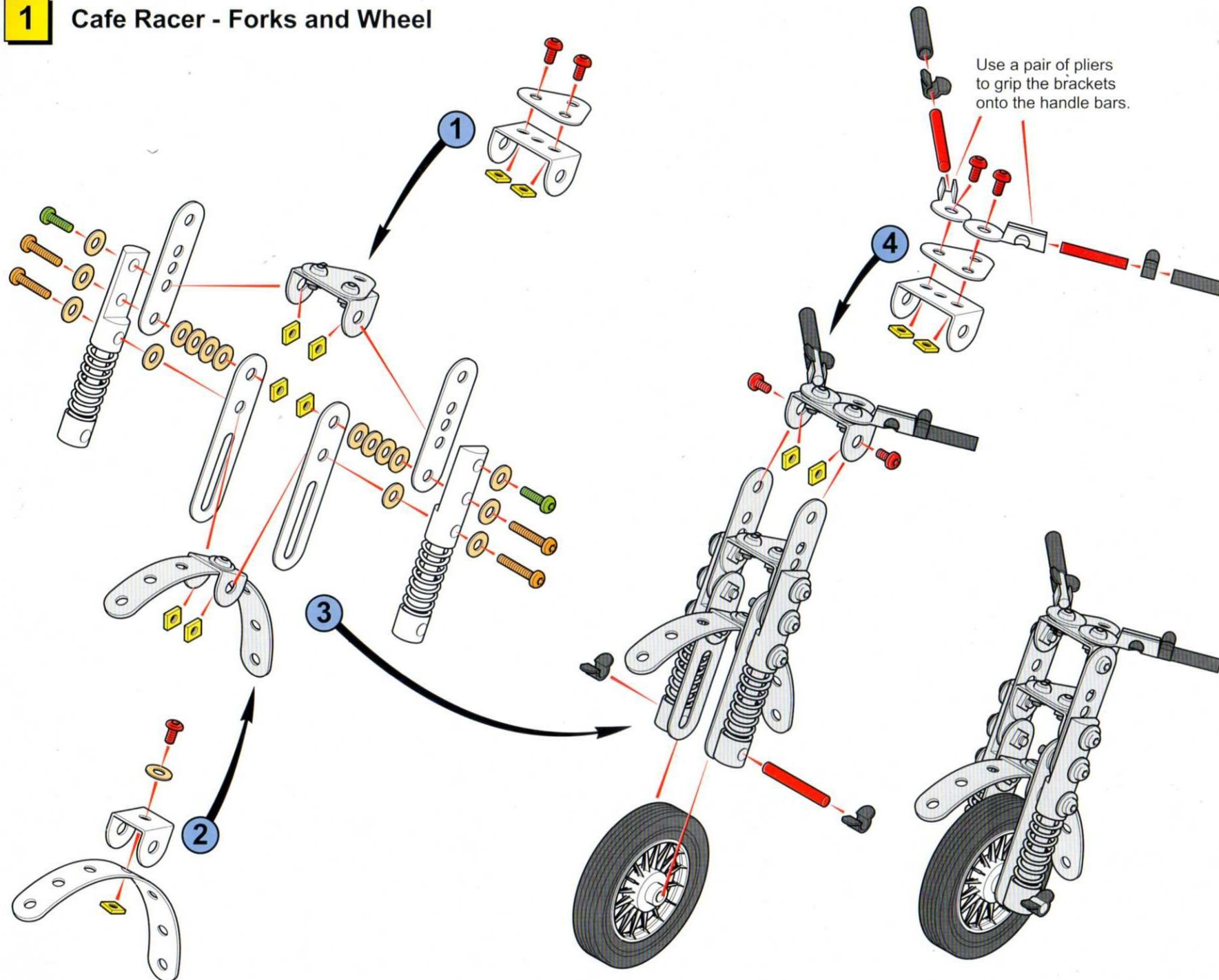
6

Final Assembly

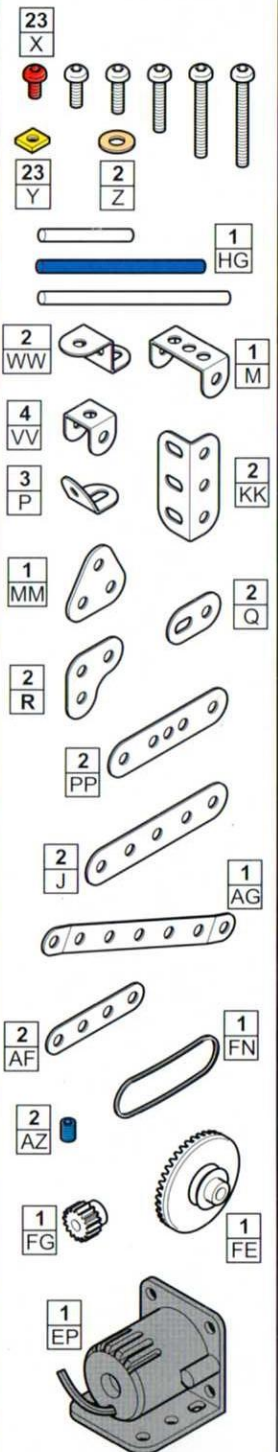
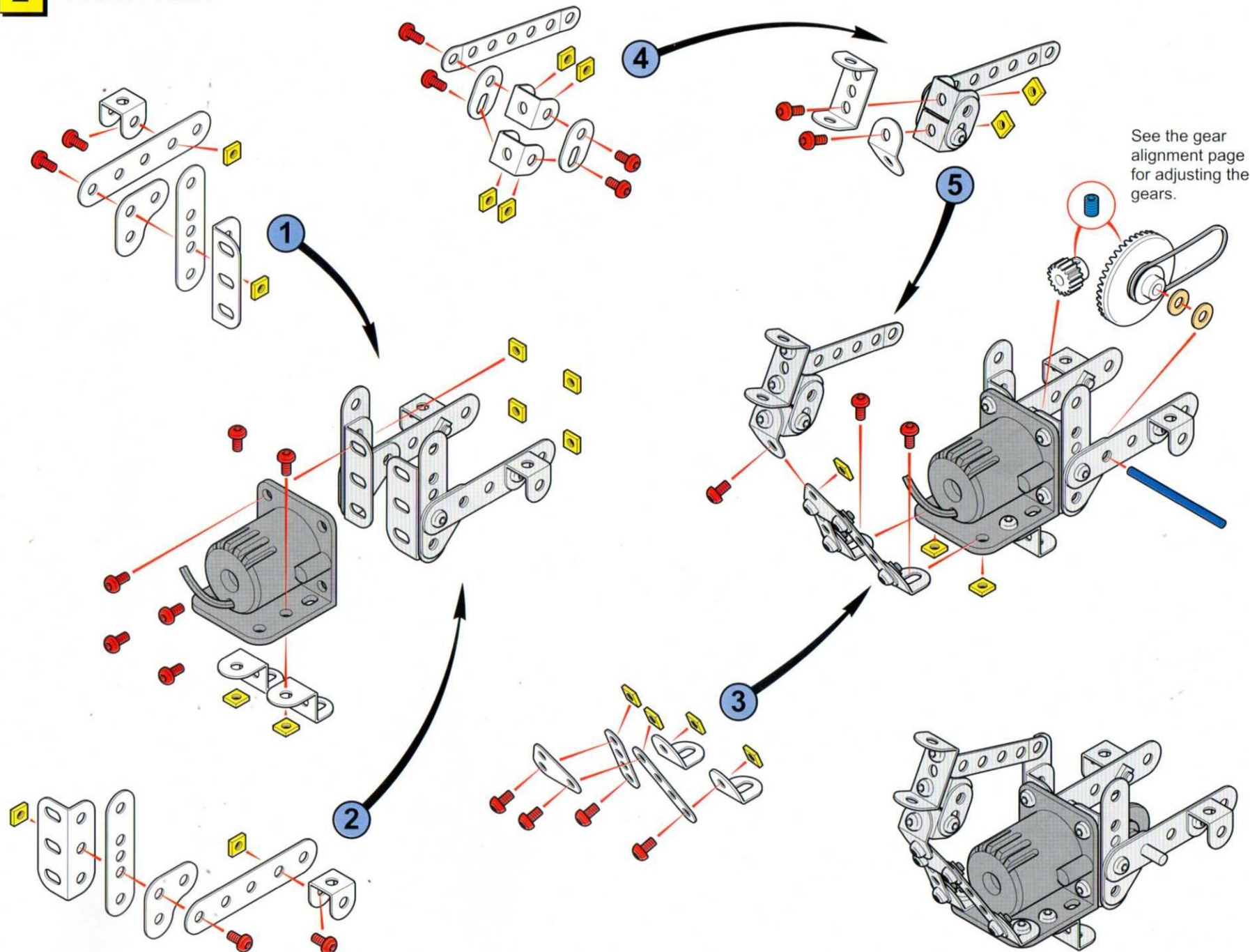


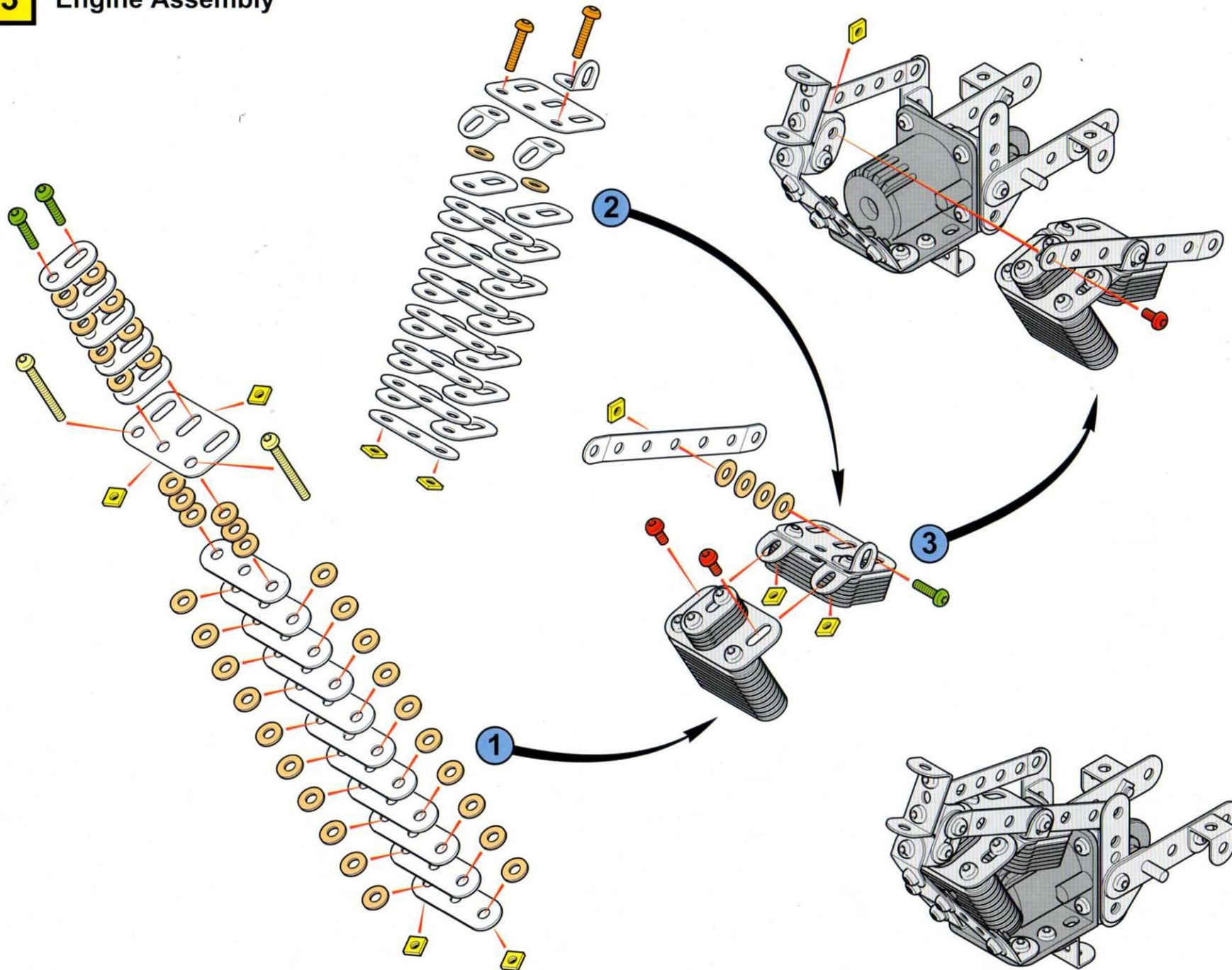
| | | | | |
|--|---------|---------|--------|--------|
| 8 X | 2 V | 1 U | 4 T | 1 W |
| 16 Y | 12 Z | 4 AB | | |
| 1 PP | | | | |
| 1 D | | | | |
| 1 CL | | | | |
| 2 GH | | | | |
| 2 FU | | | | |
| 1 DA | | | | |
| 1 KW | | | | |
| STEEL TEC™ HARLEY-DAVIDSON® | | | | |
|  WWII CYCLE | | | | |
| © 1993 REMCO TOYS, NEW YORK, NY 10010 MADE IN CHINA | | | | |
| 1 DS | | | | |

1 Cafe Racer - Forks and Wheel



2 Front Frame



3**Engine Assembly**

| | | | |
|---------|---------|--------|--------|
| 3 Z | 3 U | 2 T | 2 S |
| | | | |
| | | | |
| 10 Y | 40 Z | | |

2
P

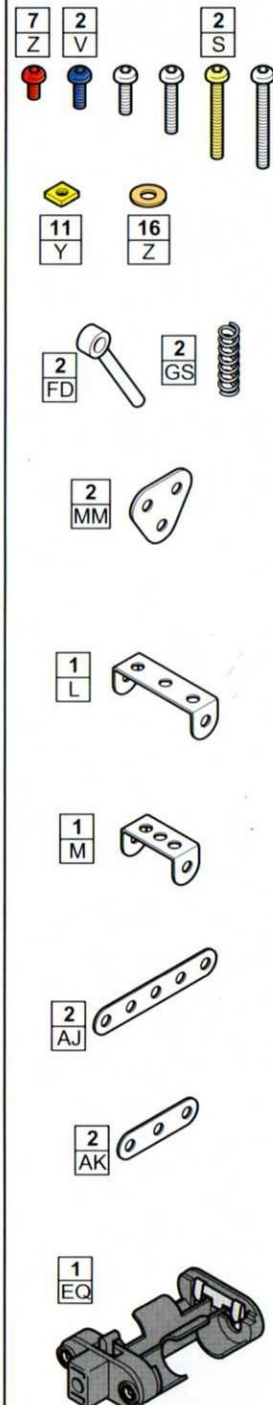
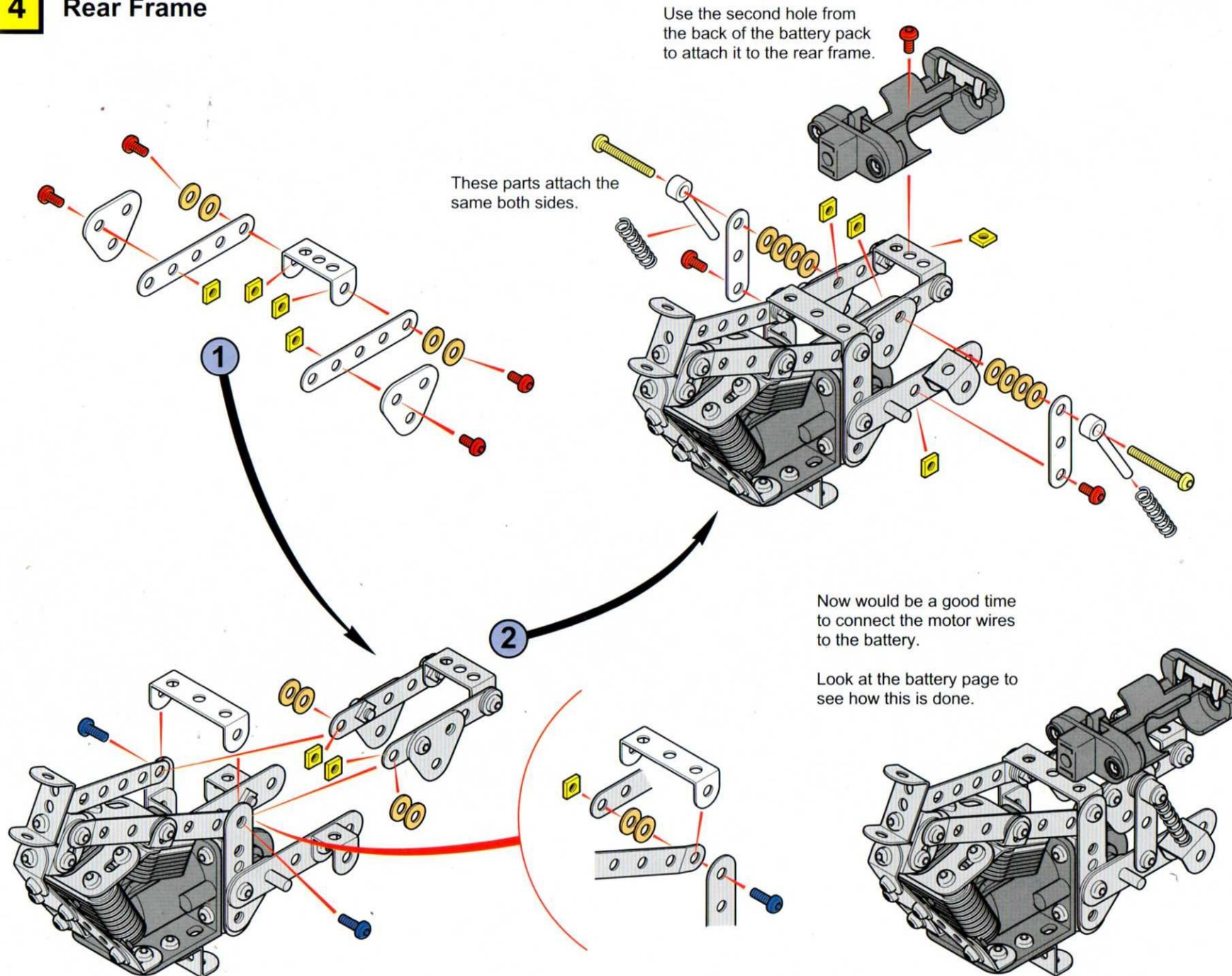
1
N

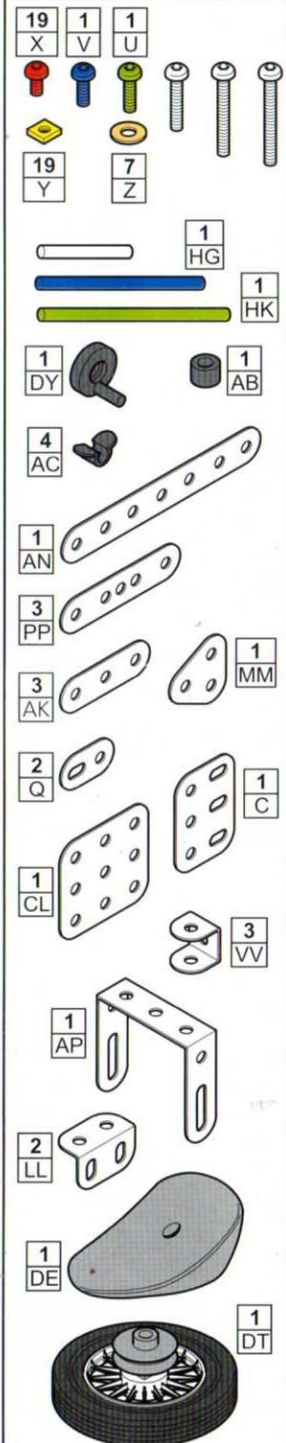
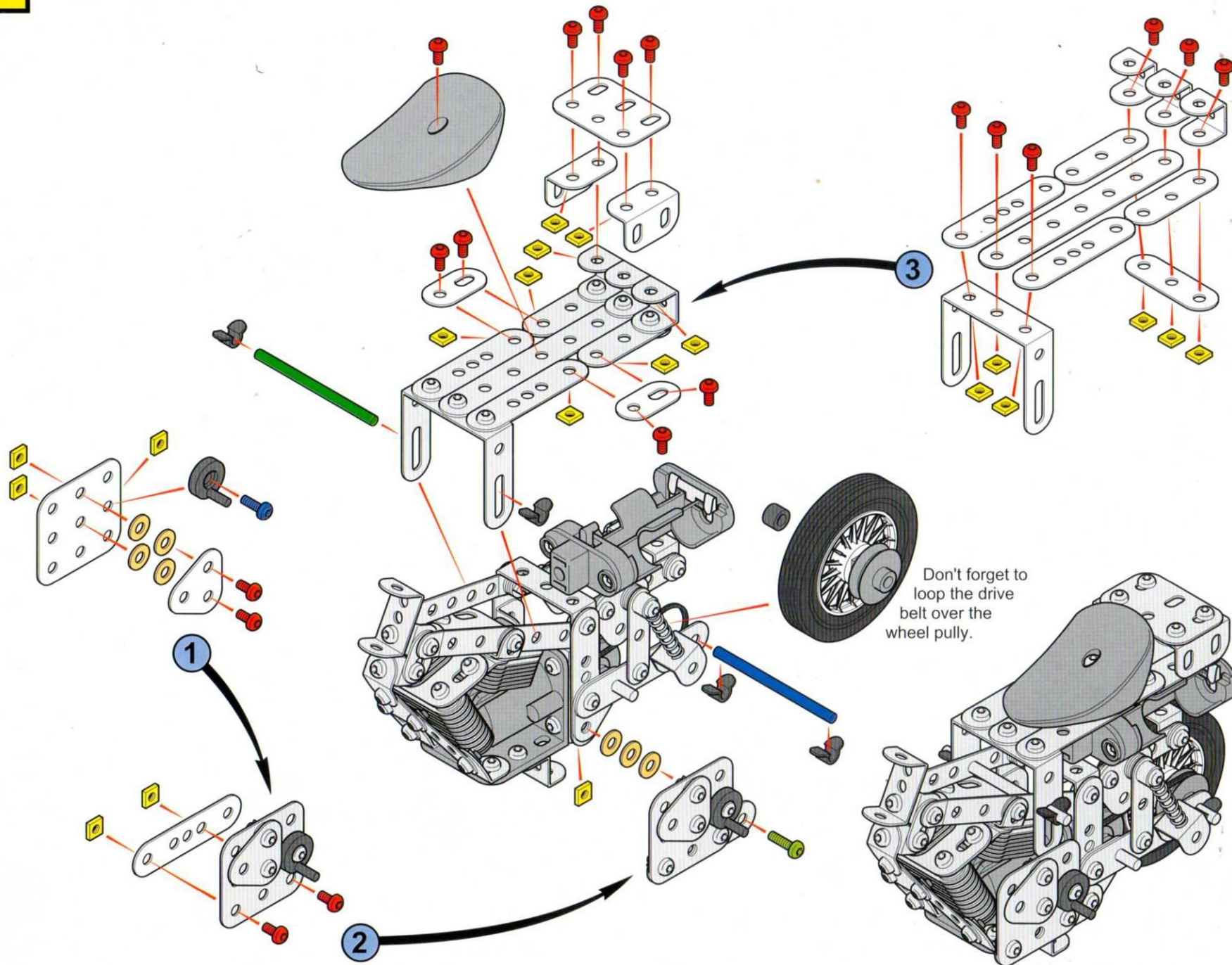
18
K

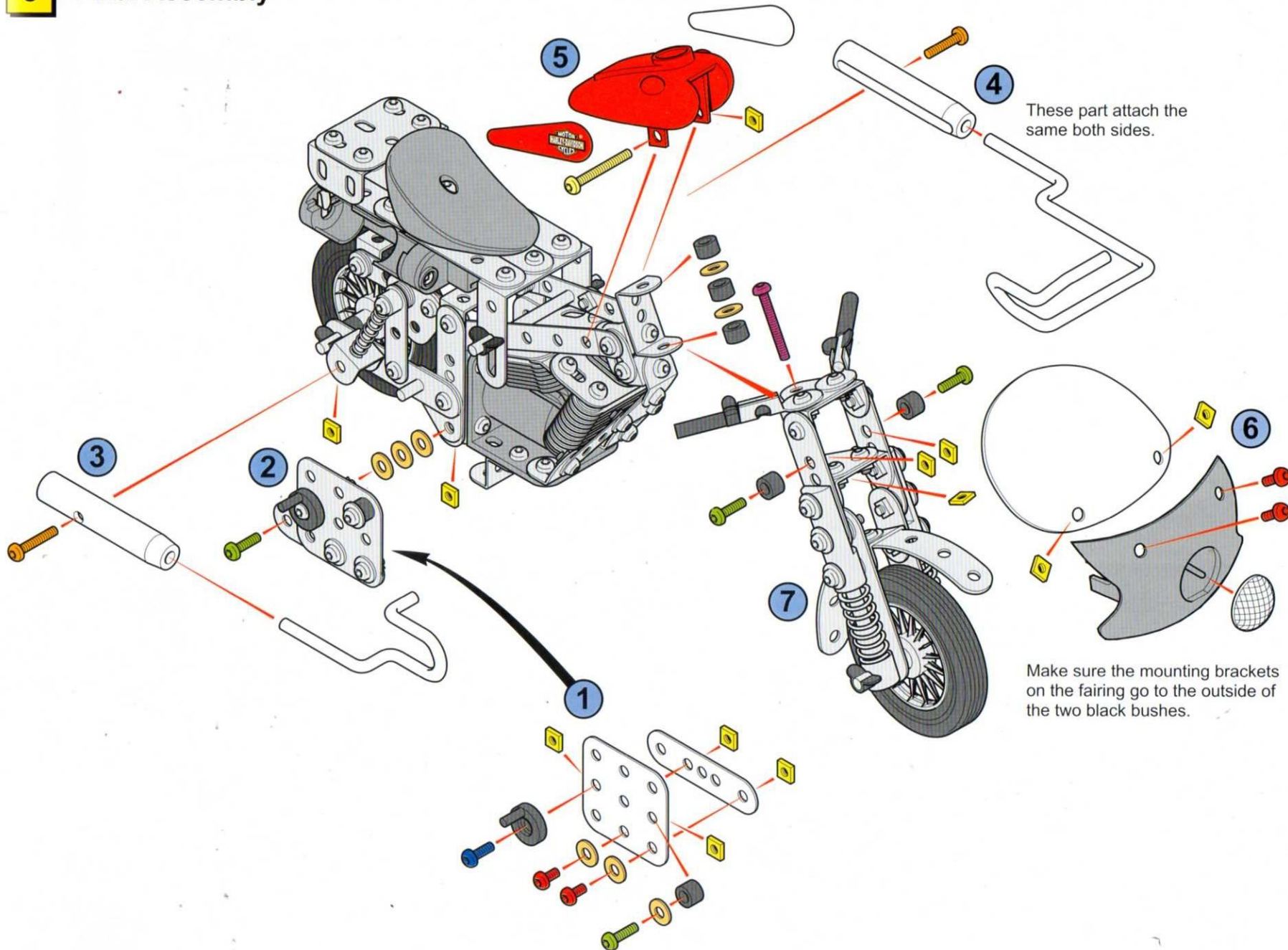
19
Q

2
C

1
AG

4**Rear Frame**

5**Rear Frame - continued**



Make sure the mounting brackets on the fairing go to the outside of the two black bushes.

COLLECT ALL OF THE EXCITING STEEL TEC SETS AND ACCESSORIES



ROAD WRECKERS™
REF. NO. 950682

SPEED DEMONS™
REF. NO. 950692

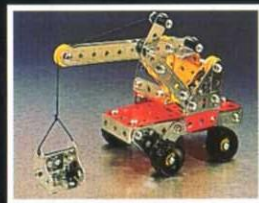


SPEEDSTERS™
ASST. NO. 700502



ROAD GRINDER™
REF. NO. 950922

DIRT DIGGER™
REF. NO. 950832



RESCUE RANGER™
REF. NO. 950822

RHINO HAULER™
REF. NO. 950662



HOVER HAWK™
REF. NO. 950932

TOUGH TRUCK™
REF. NO. 950672



Made in China. © 1993-1995 Remco Toys, Inc. New York, NY 10010. Peter Pan is the registered trademark of Bluebird Toys (UK) Ltd.

Customer Services, Peter Pan, Dragonparc, Merthyr Tydfil CF48 1PQ. Tel: 01685 721456.

Consumer Note: Please make a note of this address for future reference.

Part No. 22222748

